

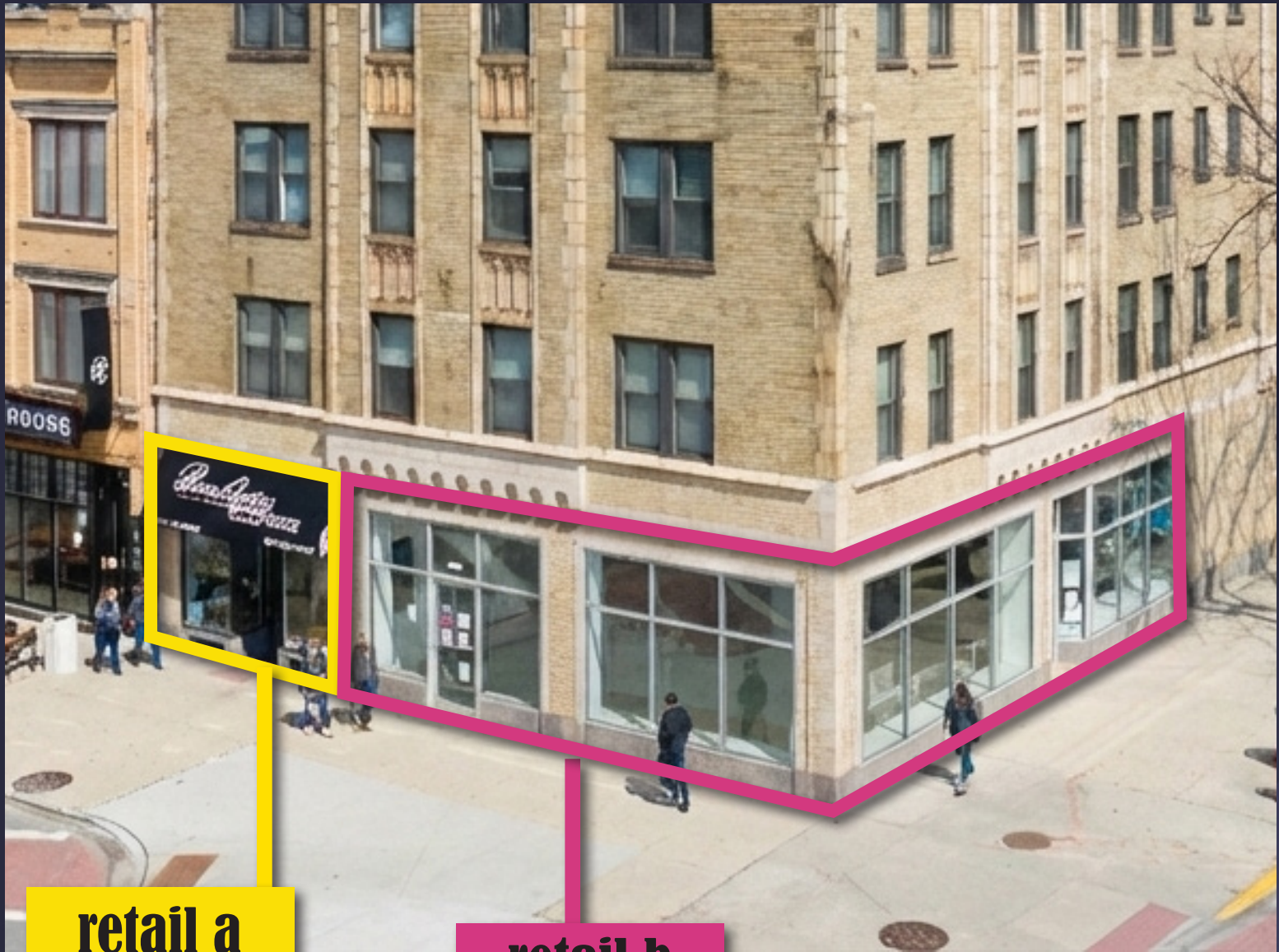
1650 West Roscoe

CHICAGO

RETAIL OPPORTUNITIES 2,070 SF | 1,045 SF | 720 SF



[savills.us](https://www.savills.us)



THE OPPORTUNITY

1650 West Roscoe Street is a flagship, corner retail opportunity at the base of a recently renovated, high-end, luxury apartment tower. This space provides the ability to capture the nearby residents, as well as the Roscoe Village and Lincoln Square retail market. This corner space offers tremendous visibility and immediate access to the adjacent Paulina CTA stop, and its daily riders.

**retail a
1,045 SF**

**retail b
2,070 SF**

FLOORPLAN OPTION A
TOTAL = 3,835 SF



9'10"
Ceiling Height



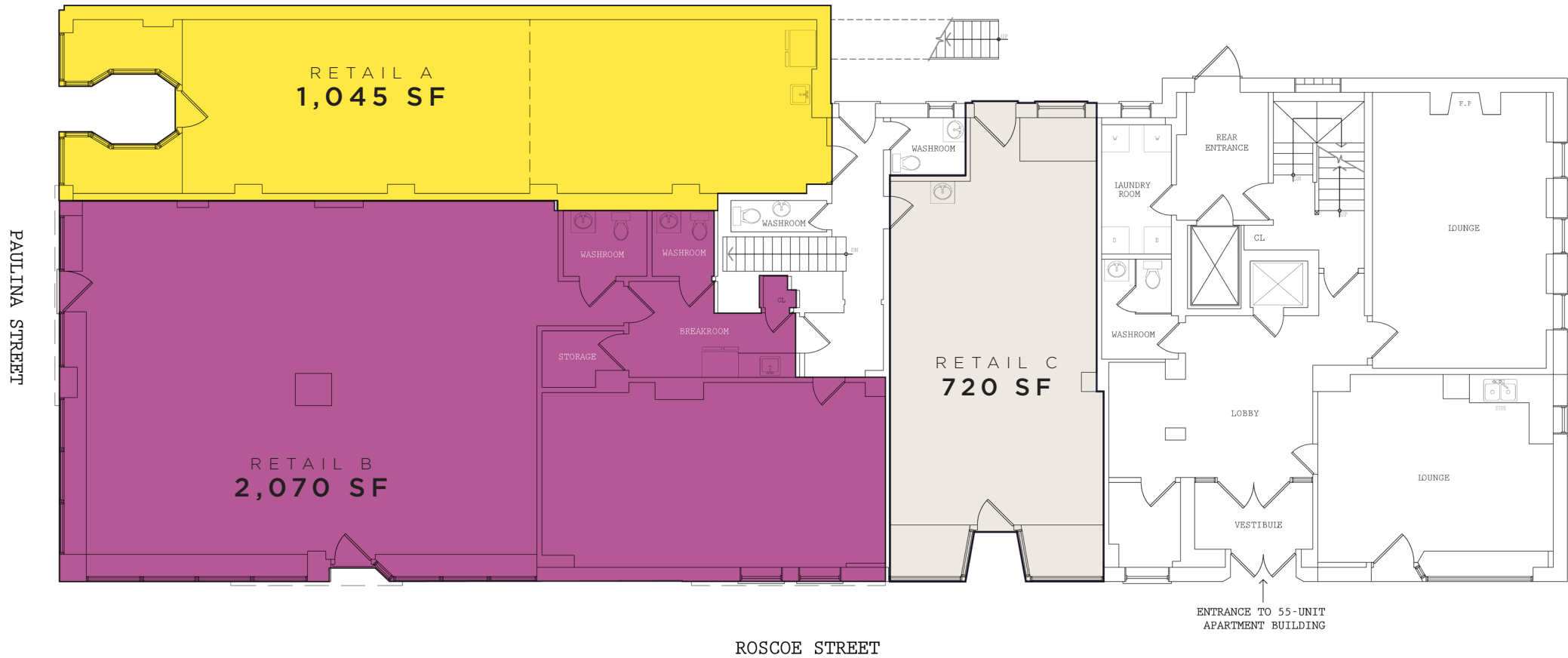
1 MIN WALK
To Paulina CTA Station



55 UNIT
Luxury Apartment Tower



10,450 VPD
Along Paulina Street



FLOORPLAN OPTION B

TOTAL = 3,835 SF



9'10" Ceiling Height



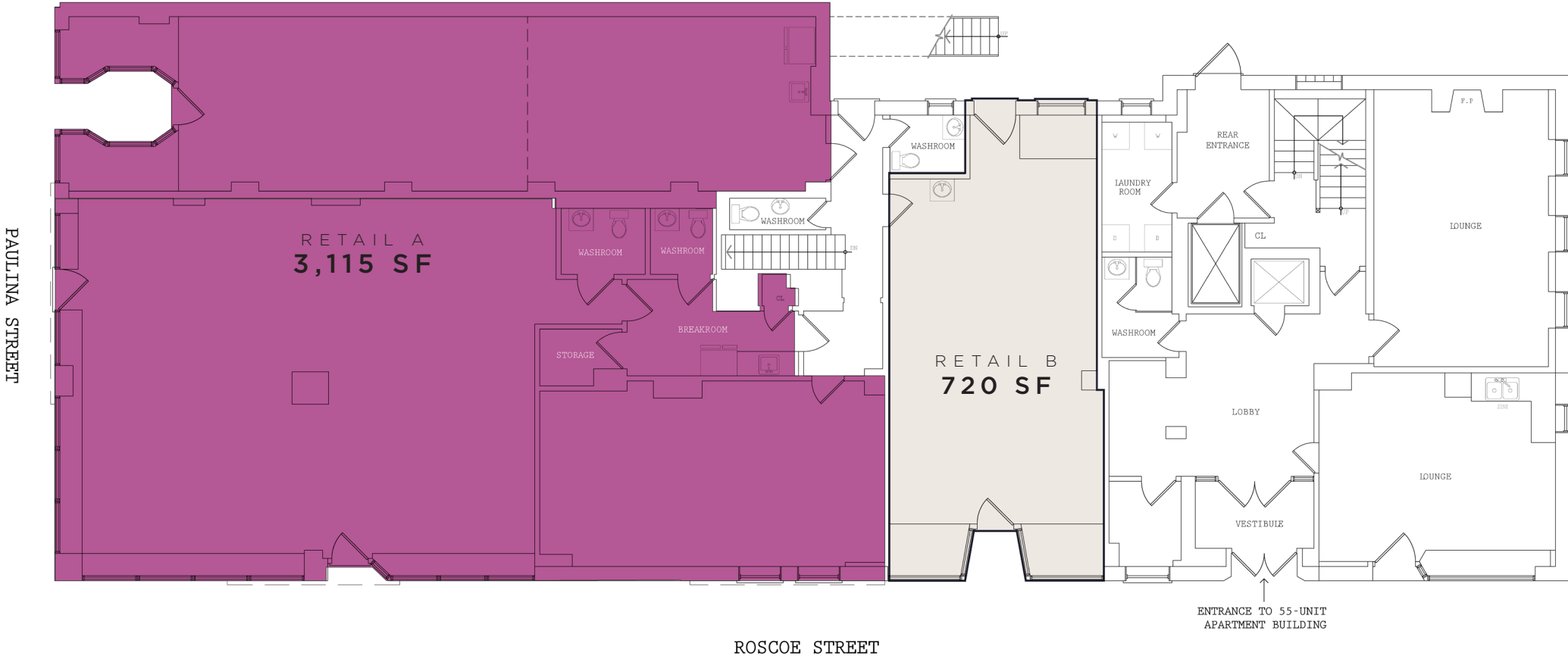
1 MIN WALK To Paulina CTA Station



55 UNIT Luxury Apartment Tower



10,450 VPD Along Paulina Street



THE NEIGHBORHOOD

DEMOGRAPHICS WITHIN ONE MILE

72,088

POPULATION

\$220,320

AVERAGE HOUSEHOLD INCOME

32.0

MEDIAN AGE

302,429

ANNUAL RIDERS CTA PAULINA STATION



KIMBERLY WISKUP

+1 312 595 2917
kwiskup@savills.us

PHIL GOLDING

+1 312 404 6673
pgolding@savills.us



savills.us

© 2025 Savills. All rights reserved. The information contained in this communication has been obtained from a variety of sources believed to be reliable but has not been verified. NO WARRANTY OR REPRESENTATION, EXPRESS OR IMPLIED, IS MADE AS TO THE CONDITION OF THE PROPERTY OR ACCURACY OR COMPLETENESS OF THE INFORMATION CONTAINED HEREIN AND SAME IS SUBMITTED SUBJECT TO ERRORS, OMISSIONS, CHANGE OF PRICE, RENTAL OR OTHER CONDITIONS, WITHDRAWAL WITHOUT NOTICE AND TO ANY SPECIFIC CONDITIONS IMPOSED BY THE PROPERTY OWNER OR LESSOR.