



ELMTREE

BY SPACEMADE .CO

34-36 QUEEN ANNE STREET



Welcome to Elmtree

A groundbreaking destination that redefines the Spacemade experience with two distinct addresses in the heart of Marylebone Village. Immerse yourself in the perfect blend of modern, stylish interiors seamlessly integrated with the rich heritage of these converted spaces, offering flexible private offices and inspiring workspaces.

Our facilities are designed to elevate your work experience, featuring chic meeting rooms, inviting lounges, and breakout areas equipped with everything you and your team need to thrive. Conveniently located at 34 and 36 Queen Anne Street, these flexible workspaces emanate timeless elegance. The fusion of sophisticated design and contemporary interiors creates distinctive and unparalleled locations, meticulously crafted to cater to the evolving nature of work. In partnership with The Howard de Walden Estate, Elmtree stands as a curated collection of premium, design-driven workspaces. Immerse yourself in an atmosphere that exudes comfort, sophistication, and a steadfast commitment to the new era of working.

ABOUT SPACEMADE

WE EXIST TO REVIVE THE WORKSPACE AS A HUB FOR MEANINGFUL CONNECTIONS AND NEW OPPORTUNITIES.

At Spacemade, we believe that real-world connections shape our personal and professional journeys in ways unmatched by digital networks and interfaces. This is why we are on a mission to cultivate 1,000,000 real-world social connections within our spaces.

We have a bold vision: A new world of work where people flourish in the company of others, and each connection amplifies collective potential.

When you join Spacemade, you don't just get an office or a hot desk; you become part of a vibrant community of like-minded individuals who come together to share ideas, nurture meaningful connections and create new opportunities.





The Space

When selecting your membership you can be rest assured that you have everything you need and more to thrive in your new business home.

Amenities

- Inclusive of monthly rent, building service charge, all utilities, & business rates & cleaning.
- Dog friendly.
- 1 GB Fiber Line & fast wifi throughout.
- Community Team on-site.
- 08:30 - 18:00, Monday-Friday.
- 24/7 access.
- Access to additional lounge spaces
- Phone booths
- Fully stocked kitchens with Brew Tea & Caravan Coffee, daily milk & fruit, and filtered water taps
- Multiple meeting rooms
- Weekly & monthly member events
- Showers & changing facilities

Unique to Riley Studios

- Gym with a Peloton Bike
- Three enterprise offices/studio space, two with private outdoor terraces with wide London skyline views.





ELMTREE

BY SPACEMADE .CO

Private Office



From £700* per desk

Hot Desk (per person)

£129* for 5 days

£189* for 10 days

£299* for unlimited days

	Coworking
	Phone Booth
	Tea Point
	Meeting Rooms
	Offices



Basement

*All prices listed are priced per month and exclusive of VAT. Based on a 12-month contract.



ELMTREE

BY SPACEMADE .CO

Private Office





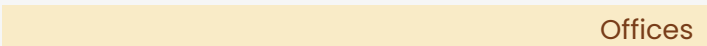
From £700* per desk

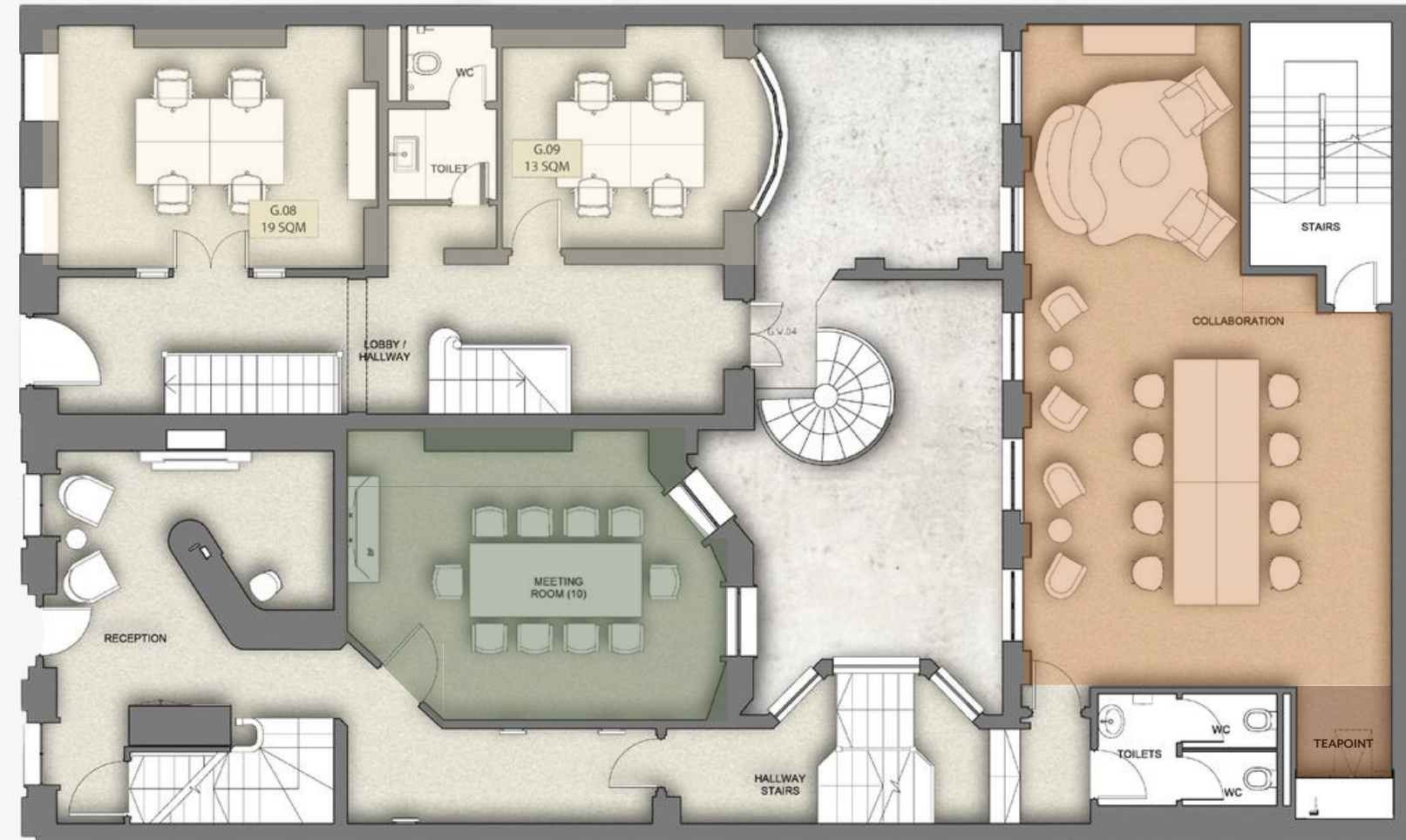
Hot Desk (per person)

£129* for 5 days

£189* for 10 days

£299* for unlimited days

	Coworking
	Phone Booth
	Tea Point
	Meeting Rooms
	Offices



Ground Floor

*All prices listed are priced per month and exclusive of VAT. Based on a 12-month contract.



ELMTREE

BY SPACEMADE .CO

Private Office

From £700* per desk

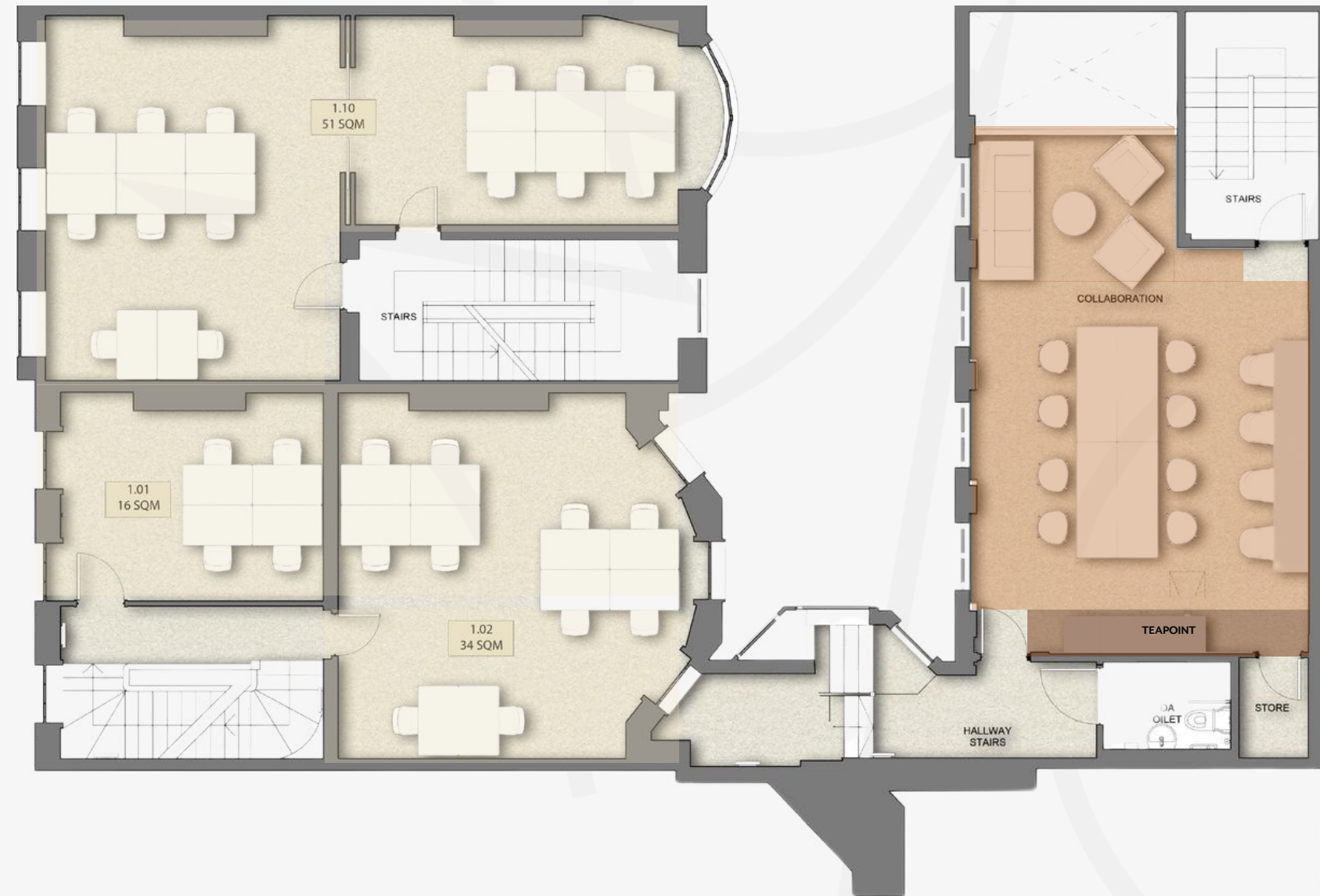
Hot Desk (per person)

£129* for 5 days

£189* for 10 days

£299* for unlimited days

	Coworking
	Offices
	Tea Point



First Floor

*All prices listed are priced per month and exclusive of VAT. Based on a 12-month contract.



ELMTREE

BY SPACEMADE .CO

Private Office

From £700* per desk



Offices

Tea Point



Second Floor

*All prices listed are priced per month and exclusive of VAT. Based on a 12-month contract.



ELMTREE

BY SPACEMADE .CO

Private Office

From £700* per desk



Offices



Third Floor

*All prices listed are priced per month and exclusive of VAT. Based on a 12-month contract.



ELMTREE

BY SPACEMADE .CO

Private Office

From £700* per desk



Offices

Tea Point



Fourth Floor

*All prices listed are priced per month and exclusive of VAT. Based on a 12-month contract.

Meeting Rooms



THE STUDY

£40p/h

Members enjoy a 1/3 saving on all bookings

Meeting room for up to 3 people



TWIG

£50p/h

Members enjoy a 1/3 saving on all bookings

Meeting room for up to 4 people



ROOTS

£50p/h

Members enjoy a 1/3 saving on all bookings

Meeting room for up to 4 people



BRANCH

£50p/h

Members enjoy a 1/3 saving on all bookings

Meeting room for up to 6 people



CANOPY

£85p/h

Members enjoy a 1/3 saving on all bookings

Meeting room for up to 10 people

[>>> CLICK HERE TO BOOK A MEETING ROOM](#)

Need somewhere quiet for a team catch-up? Have an important client presentation that you need a big screen for? With five fully-equipped meeting rooms on offer for three to ten people, Elmtree has got you covered! Meeting Rooms can be booked by the hour and come with access to all the amenities, including our fully-equipped kitchen and unlimited Caravan Coffee. Both meeting rooms come with super fast wifi, a large screen and Zoom room tech.

MARYLEBONE BUT WITH A TWIST

Take a virtual tour and immerse yourself in a perfect blend of rich heritage, innovative design and outstanding hospitality in one of London's most desirable areas.

From private offices to coworking spaces, experience timeless and opulent design with an eclectic twist.



ELMTREE

BY SPACEMADE .co

>> TAKE ME TO
ELMTREE

SPACEMADE

In the Neighbourhood

With its tree-lined streets, chic boutiques, and first-rate eating establishments, Marylebone Village has become one of the capital's most well-loved areas. Nestled in the heart of London's West End, this little oasis of calm is full of elegant architecture and hidden green spaces. Strolling along the cafe-lined pavements, you'll find it hard to believe Oxford Street and Baker Street are just a few minutes walk away.



CLICK TO FIND OUT MORE!



A Foodie Heaven

Located just a stone's throw from the hustle and bustle of Oxford Street, Moxon Street offers an array of drinking and dining hotspots surrounded by period architecture and attractive green spaces. Foodies are spoiled for choice, with a range of cuisines serving breakfast through to supper.



A Break From the Office

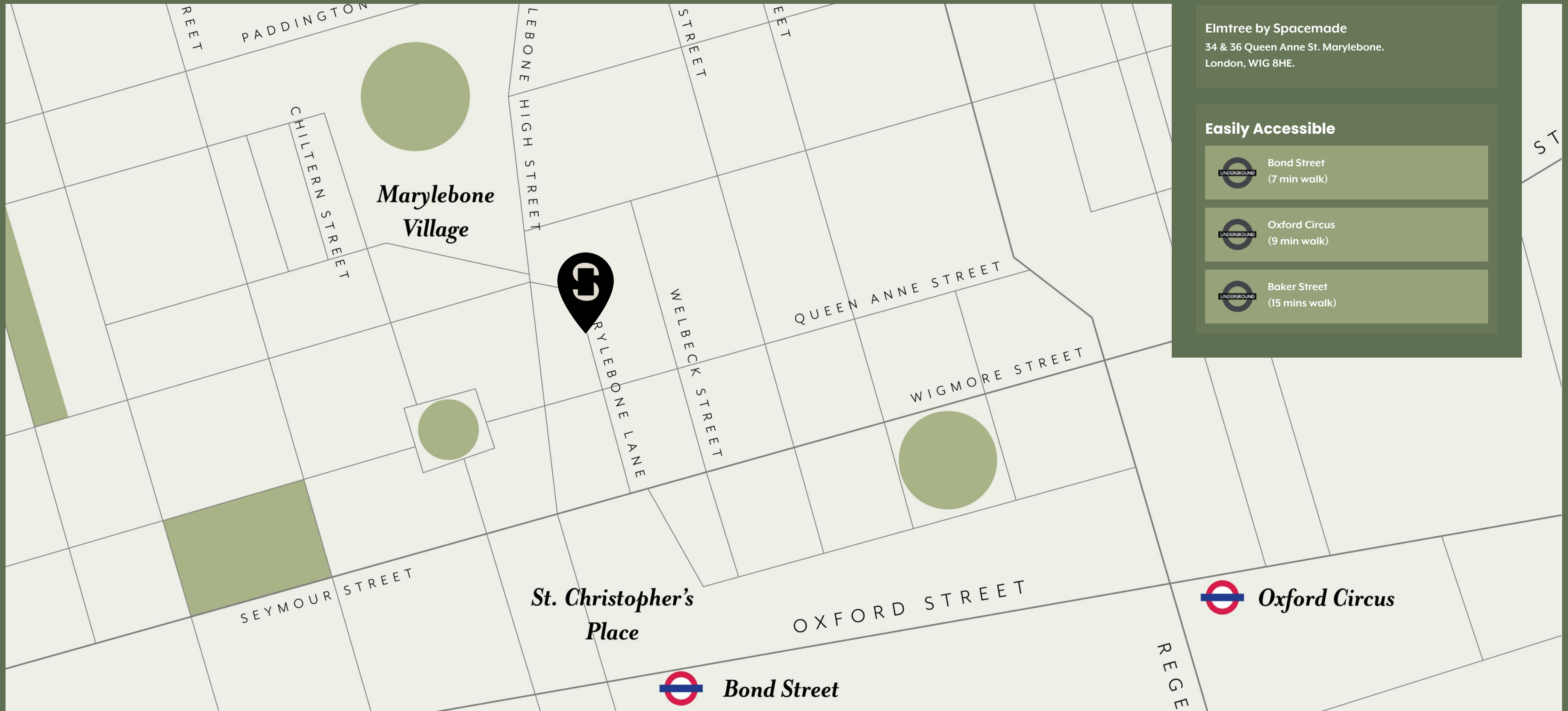
If you want to infuse your lunch break with some art and culture, you will be spoiled for choice. Explore the [Wallace Collection](#), find your next read at [Daunt Books](#), one of London's most beautiful bookshops, and you can discover up-and-coming artists at [Jaggedart Gallery](#).

After Work Delights



Enjoy a spot of Retail Therapy after work at [Marylebone Village](#). It's packed full of options, from big-name stores to small, independent boutiques. Then treat yourself to a cocktail at [108 Bar](#) or [31 Below](#), before heading for dinner at one of the many local restaurants like [Aubaine](#) or [St. John](#).





Illustrative representation of area.



ELMTREE

BY **SPACEMADE** .CO

T: 020 8064 1925

E: ELMTREE34@SPACEMADE.CO

[>>> CLICK HERE FOR MORE INFO](#)



GET IN TOUCH

REECE GIOVANNI
COMMUNITY SALES MANAGER

T: 0770 8392 341

E: REECE@SPACEMADE.CO

[SPACEMADE.CO](https://www.spacemade.co)