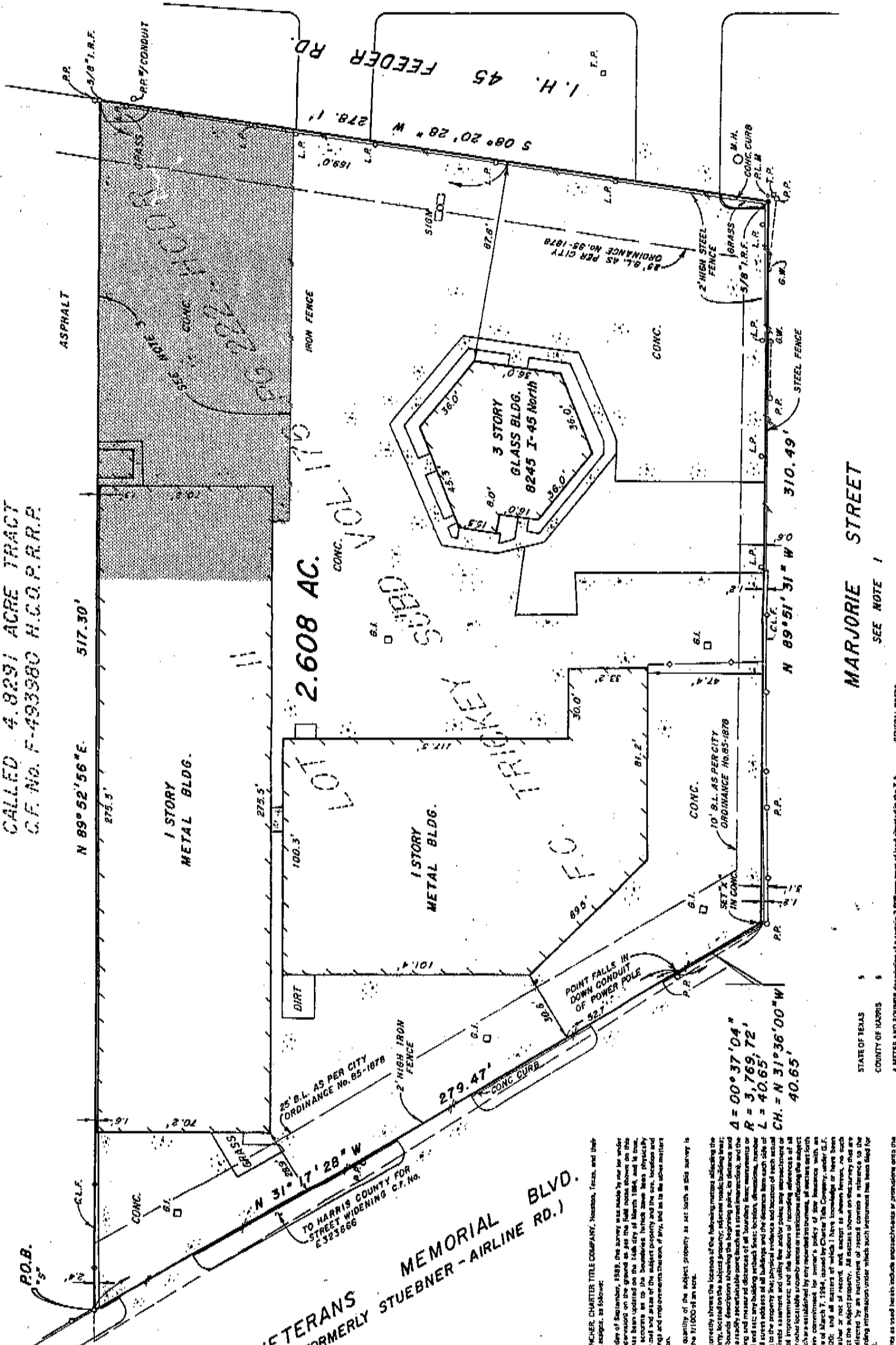


CALLED 4.8291 ACRE TRACT  
C.F. No. F-493380 H.C.O.P.R.R.P.



2.608 AC.

TO HARRIS COUNTY FOR  
STREET WIDENING  
C.F. No. 6325866

VETERANS MEMORIAL BLVD.  
(FORMERLY STUEBNER - AIRLINE RD.)

MARJORIE STREET

SEE NOTE 1

GENERAL NOTES:

1. Multiple St. has been abandoned west of 11th Street, Houston, Tex. by document recorded under Clerk's File No. 20010558 of the Harris County District Records.

LEGEND

STATE OF TEXAS  
COUNTY OF HARRIS

PLANCHER, CHARTER TITLE COMPANY, Houston, Texas, and their associates, as hereinafter defined, are the duly qualified and licensed surveyors of this State, and they are the authors of this plat. This plat was prepared by them on the basis of a survey made by them on the ground on which this plat is shown on this date of March 1984, and is true and correct in all particulars. The survey was made by them in accordance with the laws of this State, and the plat is a true and correct representation of the facts as they exist on the ground at the time of the survey. The survey was made by them in accordance with the laws of this State, and the plat is a true and correct representation of the facts as they exist on the ground at the time of the survey. The survey was made by them in accordance with the laws of this State, and the plat is a true and correct representation of the facts as they exist on the ground at the time of the survey.

A METES AND BOUNDS description of a certain 2.608 acre tract of land situated in the T.A. Marlette Survey, Abstract No. 565, Harris County, Texas, being a portion of Lot 11 of the F.C. Tract, Subdivision as shown in Volume 175, Page 232 of the Harris County District Records, 514 2.608 acre tract being more particularly described as follows: with all buildings

$$\Delta = 00^{\circ} 37' 04''$$

$$R = 3,769.72'$$

$$L = 40.65'$$

$$CH. = N 31^{\circ} 36' 00'' W$$

$$40.65'$$

POINT FALLS IN  
DOWN CONDUIT  
OF POWER POLE

279.47'

25' B.L. AS PER CITY  
ORDINANCE No. 85-1878

2' HIGH IRON  
FENCE

CONC. CURB

CONC.

10' B.L. AS PER CITY  
ORDINANCE No. 85-1878

CONC.

2' HIGH STEEL  
FENCE

GRASS

5/8" I.R.F.

CONC. CURB

P.P.

G.W.

310.49'

N 89° 51' 31" W

89

89° 51' 31" W

310.49'

P.P.

G.W.

STEEL FENCE

CONC.

89° 51' 31" W

310.49'

P.P.

G.W.

310.49'

P.P.

G.W.

310.49'

P.P.

G.W.

310.49'

P.P.

G.W.

310.49'

P.P.

G.W.

310.49'

P.P.

G.W.

310.49'

P.P.

G.W.

310.49'

P.P.

G.W.

310.49'

P.P.

G.W.

310.49'

P.P.

G.W.

310.49'

P.P.

G.W.