



26555 Richmond Rd.
Bedford Hts., OH 44146

Property Features

- Available Space: 32,055 SF
- Immediate Access to I-271 & I-480
- Clear Height: 17'
- Power: 3 Phase/240V/800 Amp
- Column Spacing: 20' x 55'
- Three Total Docks (Two - 8'x10', One - 10'x10')
- Lease Rate: \$3.50/SF



Noah Broadbent, CCIM
+1 440 708 8578
noah.broadbent@naipvc.com

Joe Hauman, CCIM
+1 440 591 3723
joe.hauman@naipvc.com

FOR LEASE

Photos

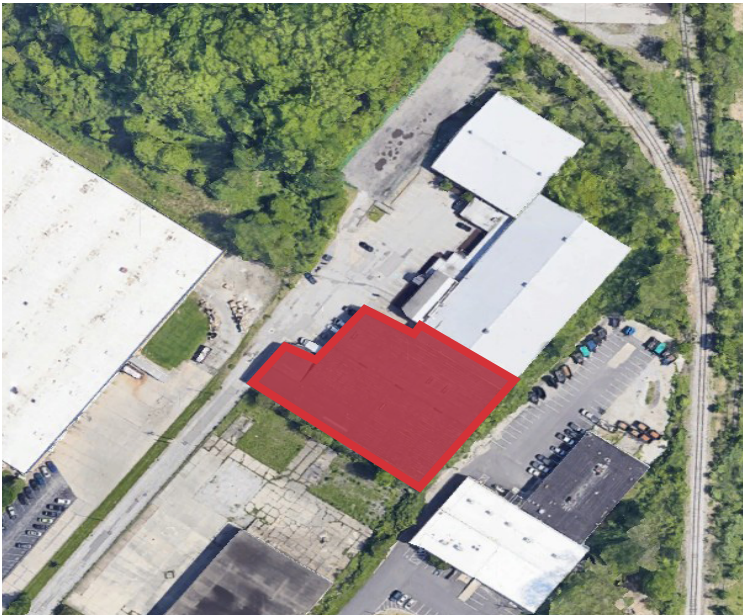
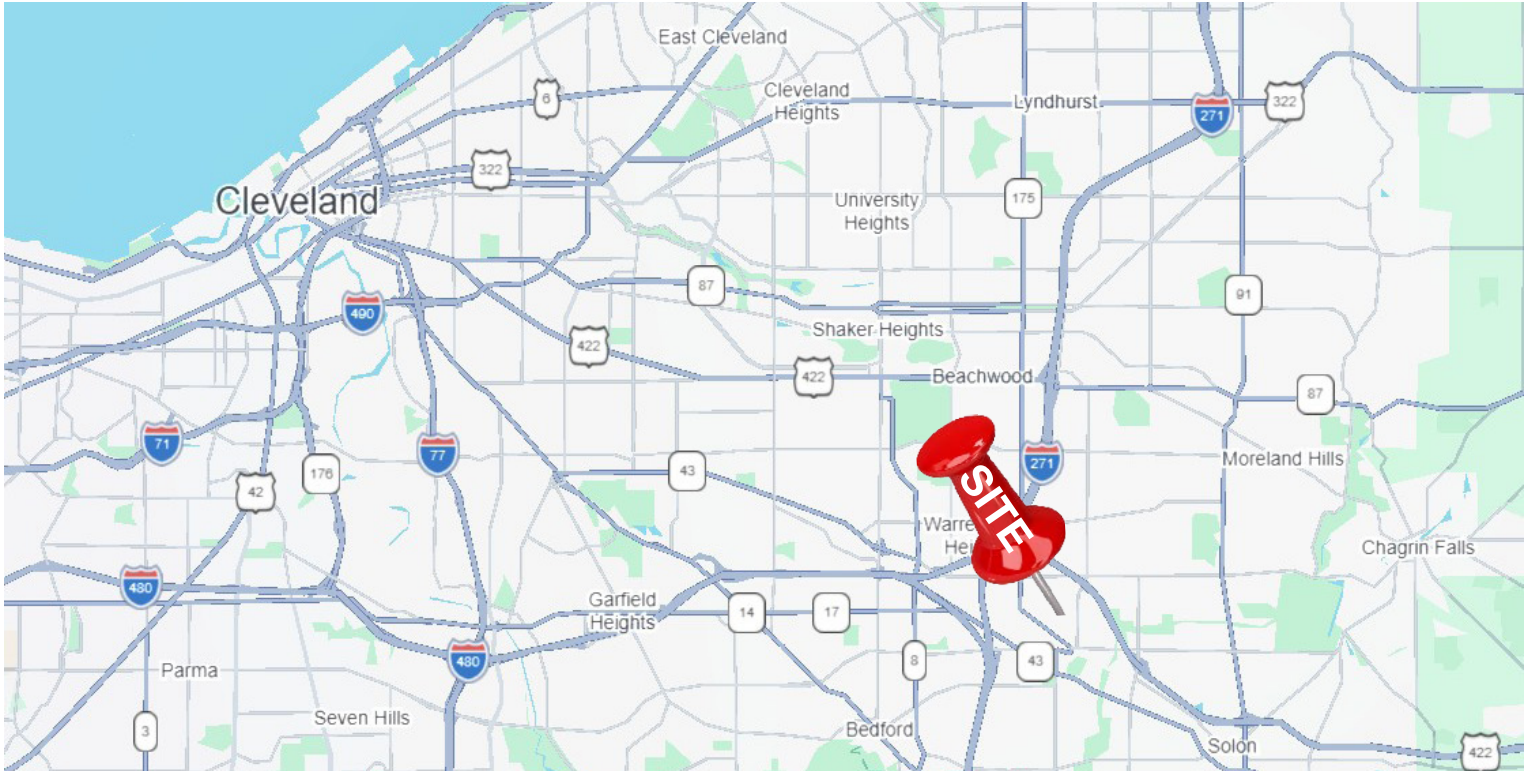


Noah Broadbent, CCIM
+1 440 708 8578
noah.broadbent@naipvc.com

Joe Hauman, CCIM
+1 440 591 3723
joe.hauman@naipvc.com

FOR LEASE

Location



26555 Richmond Rd.
Bedford Hts., OH 44146

Noah Broadbent, CCIM
+1 440 708 8578
noah.broadbent@naipvc.com

Joe Hauman, CCIM
+1 440 591 3723
joe.hauman@naipvc.com

FOR LEASE

Location

Property Details

26555 Richmond Road, Bedford Hts., OH 44146

AVAILABLE SPACE: 32,055 SF

WAREHOUSE SPACE: 31,055 SF

OFFICE AREA: 1,000 SF

ACRES: 3.47 Acres

CONSTRUCTION Metal

ZONING: I - Industrial

CEILING HEIGHT: 17' Clear Height

DOCK DOORS: Three Total Docks (Two - 8'x10', One - 10'x10')

PARKING: 14 Surface Spaces

COLUMN SPACING: 20' X 55'

HEAT: Reznor

LIGHTING: T-8

ELECTRIC POWER: 3-Phase / 240V / 300 Amp

LEASE RATE: \$3.50/SF NNN

Comments

Property is well-suited for dry storage or distribution due to its racking capability, number of docks and proximity to major interstates.

Noah Broadbent, CCIM
+1 440 708 8578
noah.broadbent@naipvc.com

Joe Hauman, CCIM
+1 440 591 3723
joe.hauman@naipvc.com