



## 3615 N Kimball Dr

Kansas City, Missouri

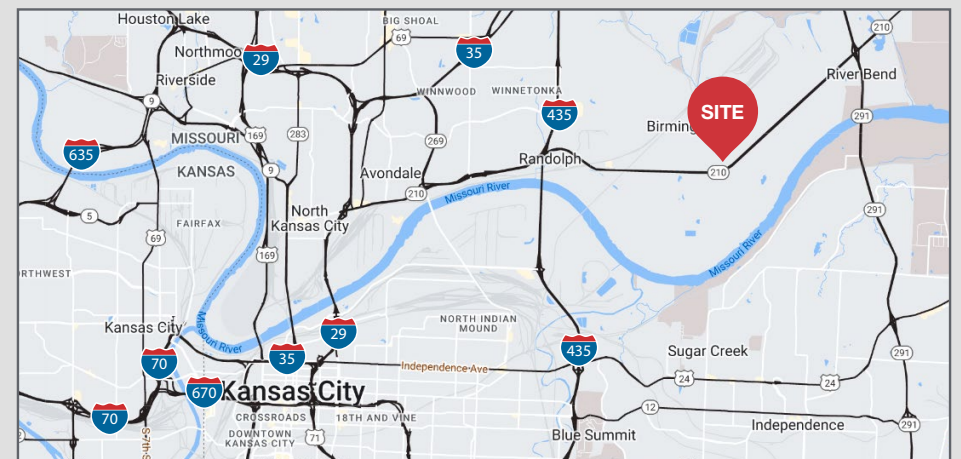
**Available Spaces:** ±2,790 SF (approx. 500 SF office)

**Clear Height:** 18-20'

**Zoning:** M1-5 Industrial

**Loading:** One (1) 10'x10' drive-in loading door

**Lease Rate:** \$2,499.38 per month plus CAM



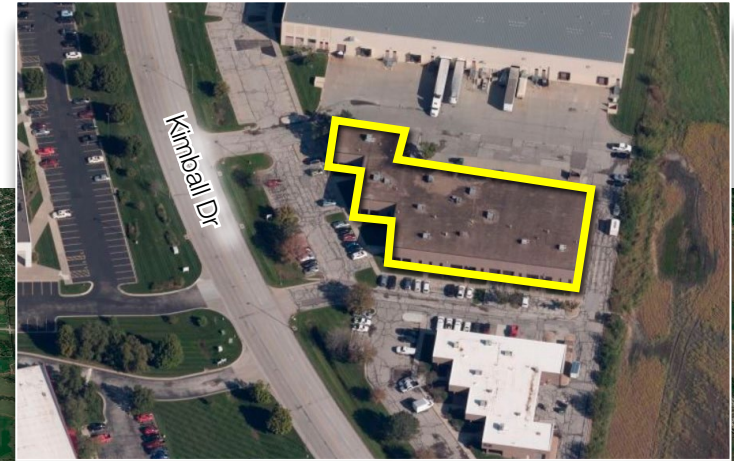
For more information:

**Joe O'Neill, CCIM**

+1 913 890 2010 • [joe@nai-heartland.com](mailto:joe@nai-heartland.com)

# For Lease Office/Warehouse, Flex Space

3615 N Kimball Dr, Kansas City, MO



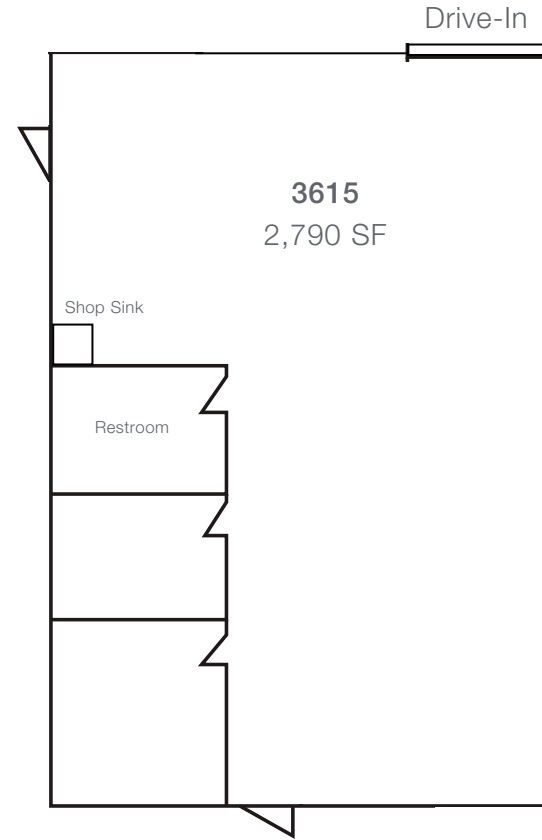
### Proximity

- MO-210 - 0.25 miles = 1 mins
- I-435 - 3.50 miles = 4 mins
- I-35 - 6.70 miles = 8 mins

4400 College Boulevard, Suite 170  
Overland Park, Kansas 66211  
+1 913 362 1000  
nai-heartland.com

# For Lease Office/Warehouse, Flex Space

3615 N Kimball Dr, Kansas City, MO



## 3615 N Kimball Drive Features

- ±2,790 SF (approx. 500 SF office) Available
- 18-20' clear-height
- One (1) 10'x10' drive-in loading door
- 3-phase power available
- Lease Rate: \$2,499.38 per month plus CAM