

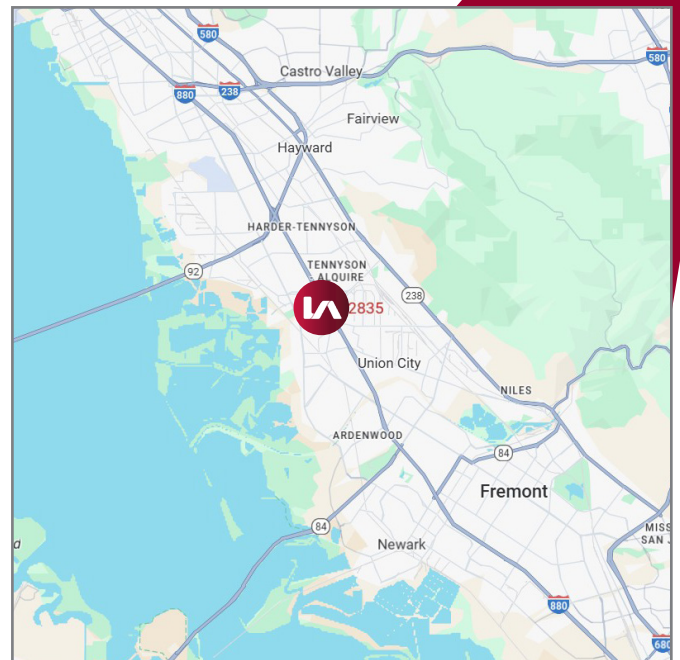
AVAILABLE FOR SUBLEASE

2835 WHIPPLE ROAD-A | HAYWARD, CA



LISTING DATA:

- 2,208± SF Industrial Unit
- 2 Private Offices
- Reception
- Call Exclusive Agent for Pricing
- Direct Deal Possible
- LED: 6/2027
- Available: 12/1/2025

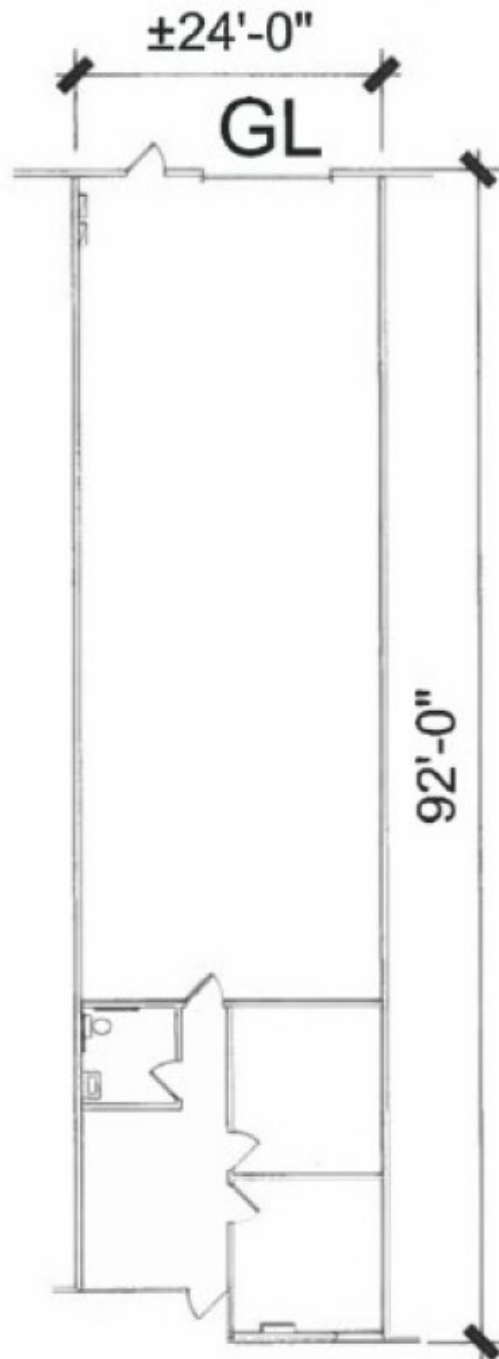


EXCLUSIVE AGENT:

Michael MacDonald, Associate
E \\ mmacdonald@lee-associates.com
P \\ 510.907.3024 | LIC# 02180613

AVAILABLE FOR SUBLEASE

2835 WHIPPLE ROAD-A | HAYWARD, CA



**FLOOR PLAN NOT TO SCALE*

EXCLUSIVE AGENT:

Michael MacDonald, Associate
E \\ mmacdonald@lee-associates.com
P \\ 510.907.3024 | LIC# 02180613