

**MULTI-USE UNIT  
TO LET**  
**3,317 SQ FT (308 SQ M)**

**KALMARs**

COMMERCIAL

020 7403 0600



**179 MANOR PLACE, LONDON, SE17 3BS**

 **LOCATION:**

This unit is located on Manor Place, just off Walworth road, and a 3 minute walk from Kennington Tube station.

 **DESCRIPTION:**

This property comprises a modern commercial unit in shell and core condition provided for the tenant to configure their own fit out.

It has Class E planning permission, suitable for a number of retail, medical, leisure and office uses.





**SIZE: 3,317 Sq Ft (308 Sq M)**

**TENURE: New Lease**



**RENT: £62,000**



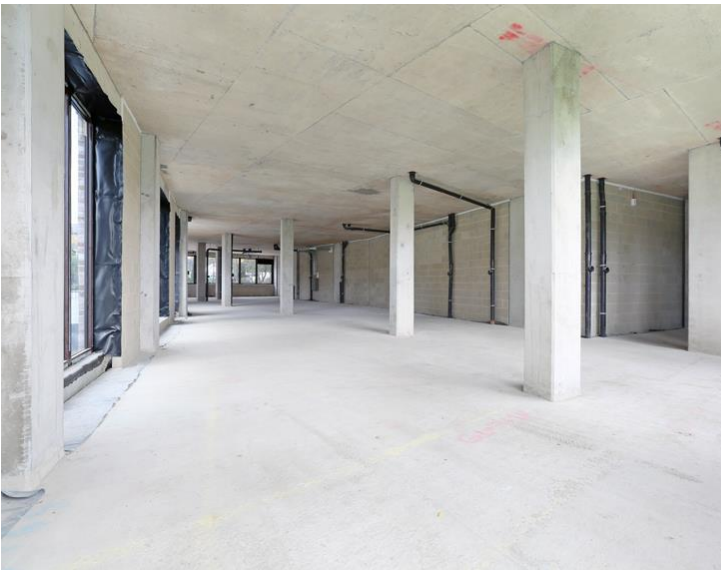
**COSTS:**

**Legal and Surveyor Fees:** The incoming tenant will have to pay for the Lndlord's legal and surevyor fees.



**VIEWINGS:**

By arrangement with the owner's sole agents KALMARs Commercial.



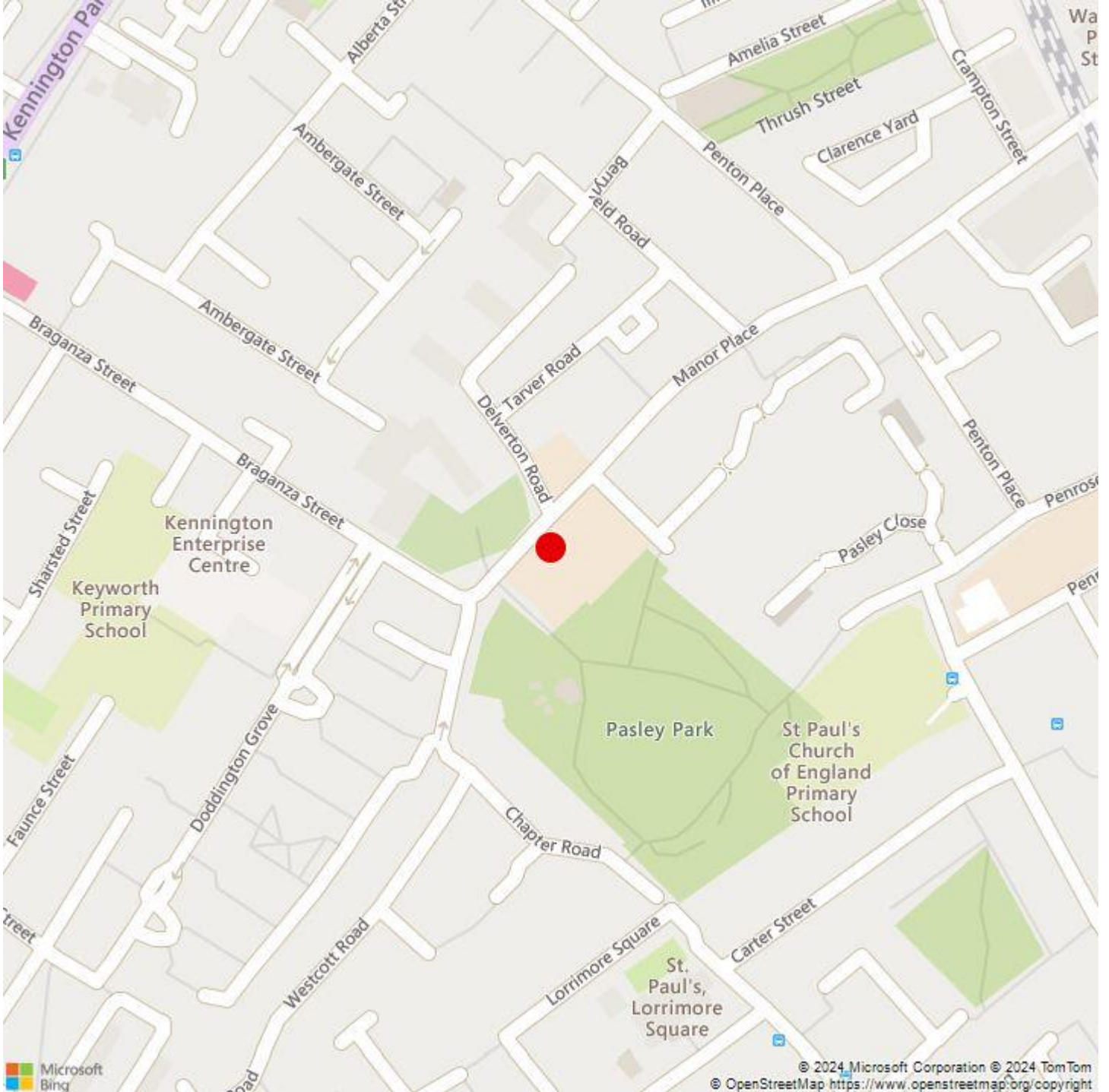
**CONTACT:**

Farah Mohamed  
020 7403 0600  
farahm@kalmars.com

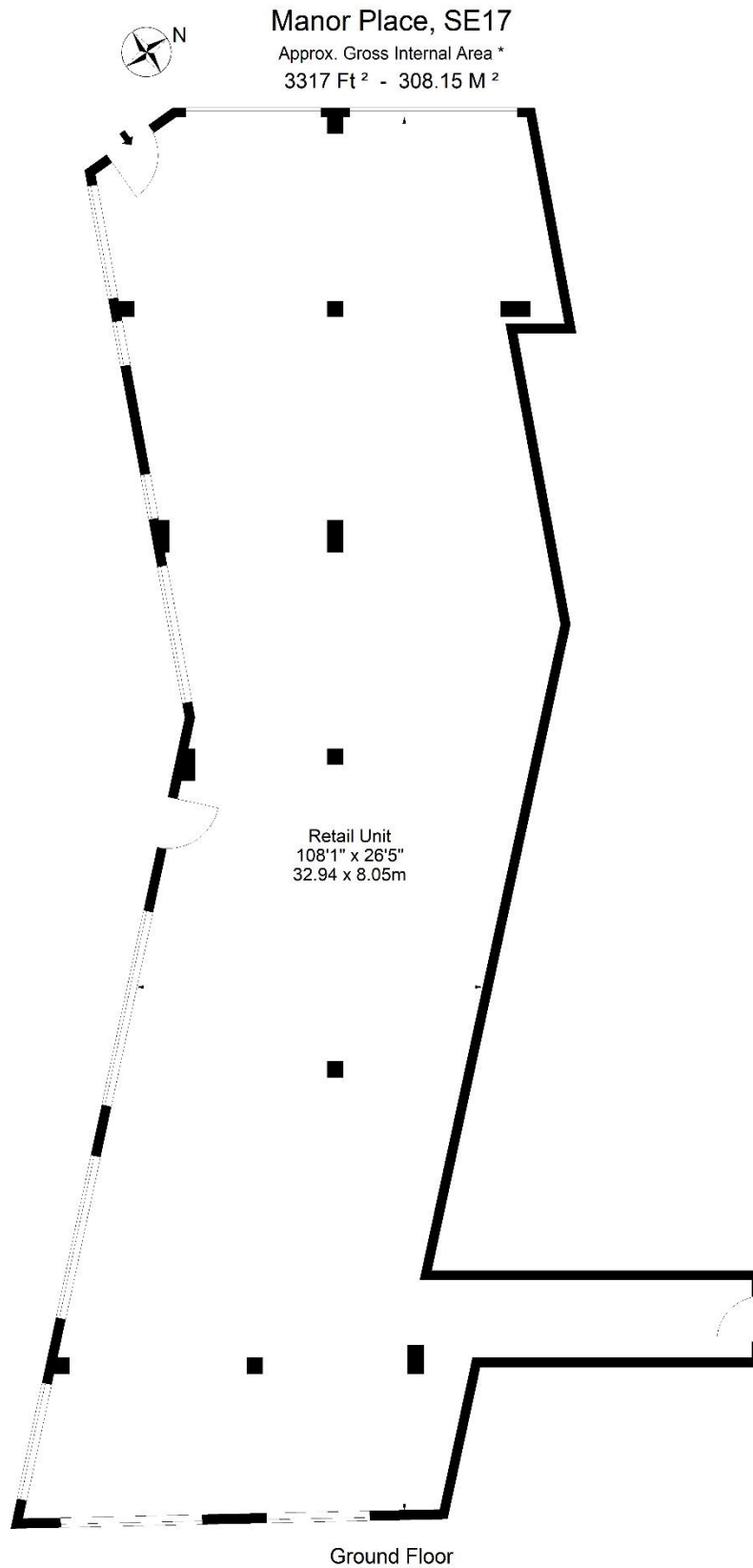


**KALMARs**

SOUTH LONDON'S LEADING AGENTS



All properties are offered subject to contract and availability. These particulars are believed to be correct when published, but we cannot accept any liability whatsoever for any misrepresentation made either in these particulars or orally. Intending purchasers or tenants are strongly advised to make their own enquiries to check these particulars to satisfy themselves that the property is suitable for their purchase. They may be subject to VAT.



For Illustration Purposes Only - Not To Scale - Floor Plan by inter Design Photography  
[www.interdesignphotography.com](http://www.interdesignphotography.com)

This floor plan should be used as general outline for guidance only.  
All measurements are approximate and for illustration purposes only as defined by the RICS Code of Measuring Practice © 2024

All properties are offered subject to contract and availability. These particulars are believed to be correct when published, but we cannot accept any liability whatsoever for any misrepresentation made either in these particulars or orally. Intending purchasers or tenants are strongly advised to make their own enquiries to check these particulars to satisfy themselves that the property is suitable for their purchase. They may be subject to VAT.



E r r o r ! F i l e n a m e n o t s p e c i f i e d .