



# THE MULTIFAMILY FIRM™

*MultifamilyFirm.com*

## New Price Adjustment!



\$709,000  
NEW LIST PRICE



3  
UNITS



BUILT IN  
1913/2003

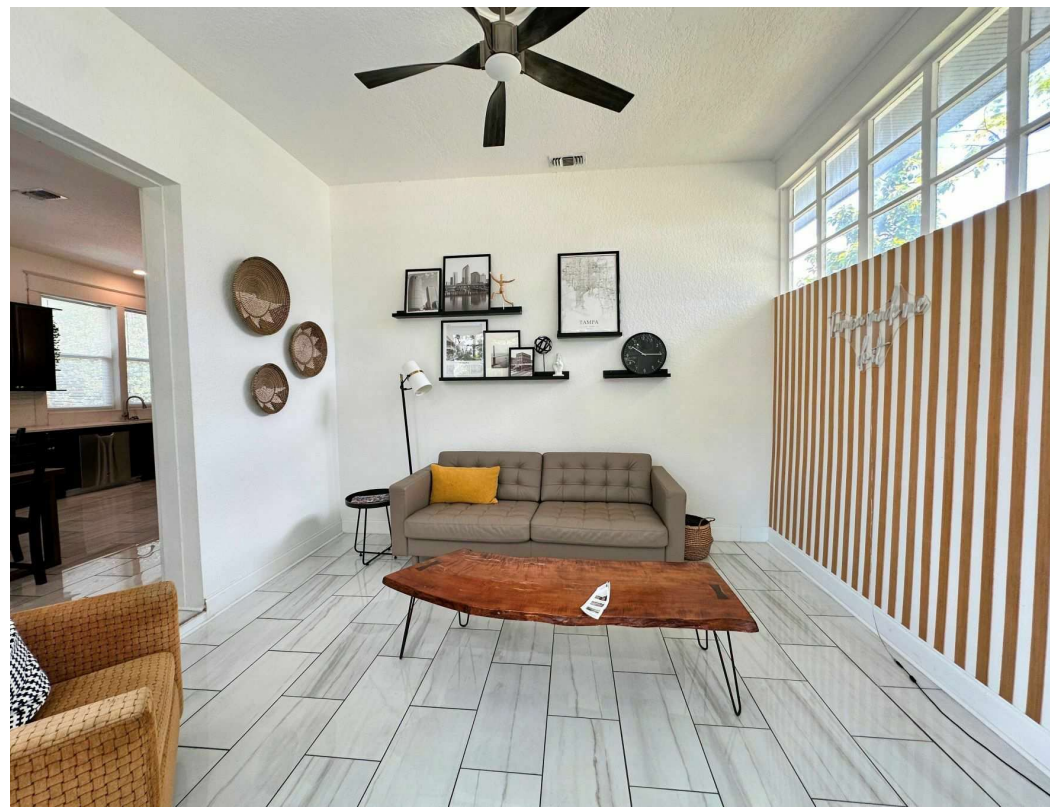
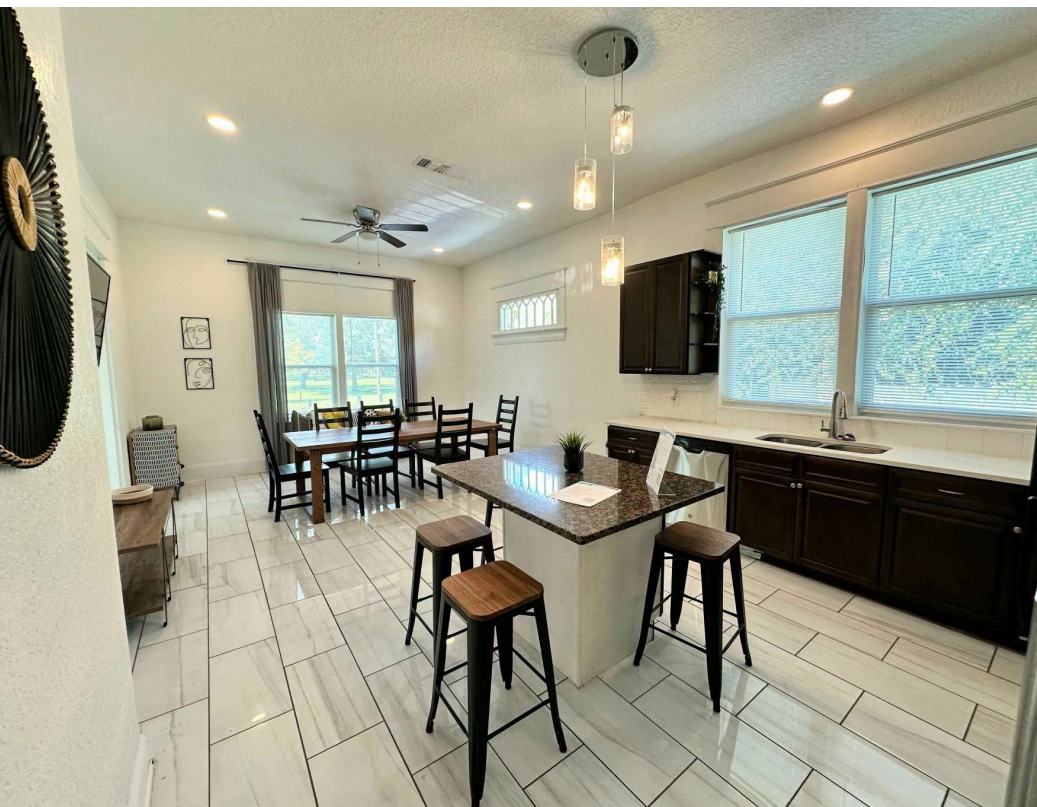


TAMPA  
FLORIDA



4 BD/4.5 BA HOUSE  
& 2 APARTMENTS

**ACCESS OFFERING MEMORANDUM FOR FULL DETAILS AT [MULTIFAMILYFIRM.COM](https://www.MultifamilyFirm.com)**



## PROPERTY HIGHLIGHTS



## PROPERTY HIGHLIGHTS

- Exceptional 3-Unit Multifamily Asset, Consisting of 4-Bed /4.5-Bath House & Two Apartments on 1 Parcel
- Savvy Investment Opportunity to Reside in House & Leverage 2 Apartment Units to Pay Mortgage & Build Equity
- Spacious 4-Bed / 4.5-Bath House, Recently Renovated w/ Modern Finishes, Featuring En-Suite Bathrooms in Every Bedroom, Granite Countertops, Stainless Steel Appliances & LVP Flooring
- Two Apartments in Rear Buildings, Featuring One, 2 Bed / 1 Bath Unit & One, 1 Bed / 1 Bath Unit
- Non-Flood Zone Location (Zone X) & Newer Roofs (2023), Substantially Reducing Insurance
- Property Consists of 3-Units, in 3 Buildings, on 1 Parcel Totaling 0.19 Acres
- Minutes from Midtown Tampa, Featuring Whole Foods, REI, Aloft & Element Marriott Hotel, & Over 1,000 Residential Units Driving Tenant Demand
- Minutes to Downtown Tampa, SoHo & Ybor City; Access to Major Job Centers, Nightlife & Culture
- 5-Minutes to Tampa International Airport: Ideal for Business Travelers, Airline Employees & Corporate Tenants



**KYLE KEELAN**

Managing Partner

**Direct:** 813.773.6737 **Cell:** 727.251.5953  
Kyle@MultifamilyFirm.com



**PHIL GINEXI**

Co-Founder

**Direct:** 941.444.6160 **Cell:** 631.404.6060  
Phil@MultifamilyFirm.com





THE  
MULTIFAMILY  
FIRM™

# MacFarlane Park Place

Exceptional 3-Unit Multifamily Asset in Tampa, FL

View Offering Memorandum for Full Details at...  
[MultifamilyFirm.com](https://www.MultifamilyFirm.com)

**FOR MORE INFORMATION CONTACT:**

Kyle Keelan  
Managing Partner  
813.773.6737  
[Kyle@MultifamilyFirm.com](mailto:Kyle@MultifamilyFirm.com)

Phil Ginexi  
Co-Founder  
941.444.6160  
[Phil@MultifamilyFirm.com](mailto:Phil@MultifamilyFirm.com)

[MULTIFAMILYFIRM.COM](https://www.MultifamilyFirm.com)