



N53 W25314 HIGHLANDS COURT
SUSSEX, WI 53089

FEATURES

This is your opportunity to move your business into a beautiful new construction industrial facility just 10 minutes from I-94 off Hwy 164. This high image property offers flexible space configurations with units starting at 21,251 SF up to a total of 85,260 SF. Featuring 28' clear height, each unit includes dock and drive-in access. Contact us about pricing and details.

Available: **Fall 2025**

Clear Height: **28'**

Dock Doors: **7 Available**

Drive in Doors: **4 Available**

Year Built/Renovated: **2025**

Zoning: **BP-1, PDO**

Construction: **Precast Panels**

Sewer: **Municipal / Water: Municipal**

Sprinkler: **Yes**

Power: **3 Phase, 480 v (To Be Verified)**

Lighting: **LED**

Traffic Count: **20,100 VPD along Hwy 164 and 10,500 VPH along Hwy K**

(WI DOT)

Listing: **4788**



INDUSTRIAL FOR LEASE

Total SF: **139,106**

Available SF: **85,260**

Min Contiguous SF: **21,351**

Max Contiguous SF: **85,260**

Lease Rate - Call Broker

Cole Russell, Senior VP-Sales / SIOR
262-695-8800
crussell@judsonrealestate.com

Matthew Judson, President
262-695-8800
matt.judson@judsonrealestate.com

Judson & Associates, S.C.
2831 N. Grandview Blvd, Suite 222
Pewaukee, WI 53072

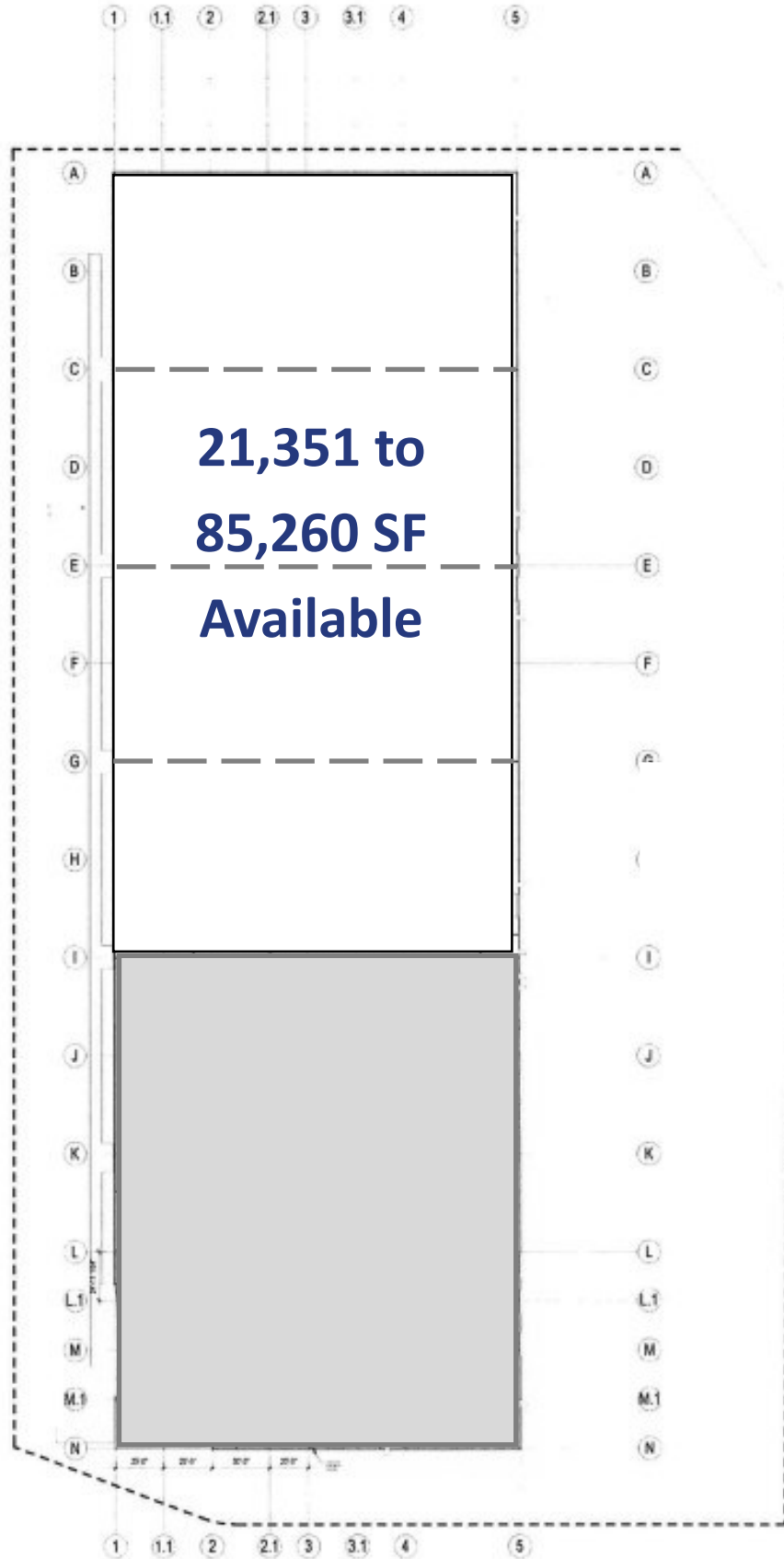


Cole Russell, Senior VP-Sales / SIOR
262-695-8800
crussell@judsonrealstate.com

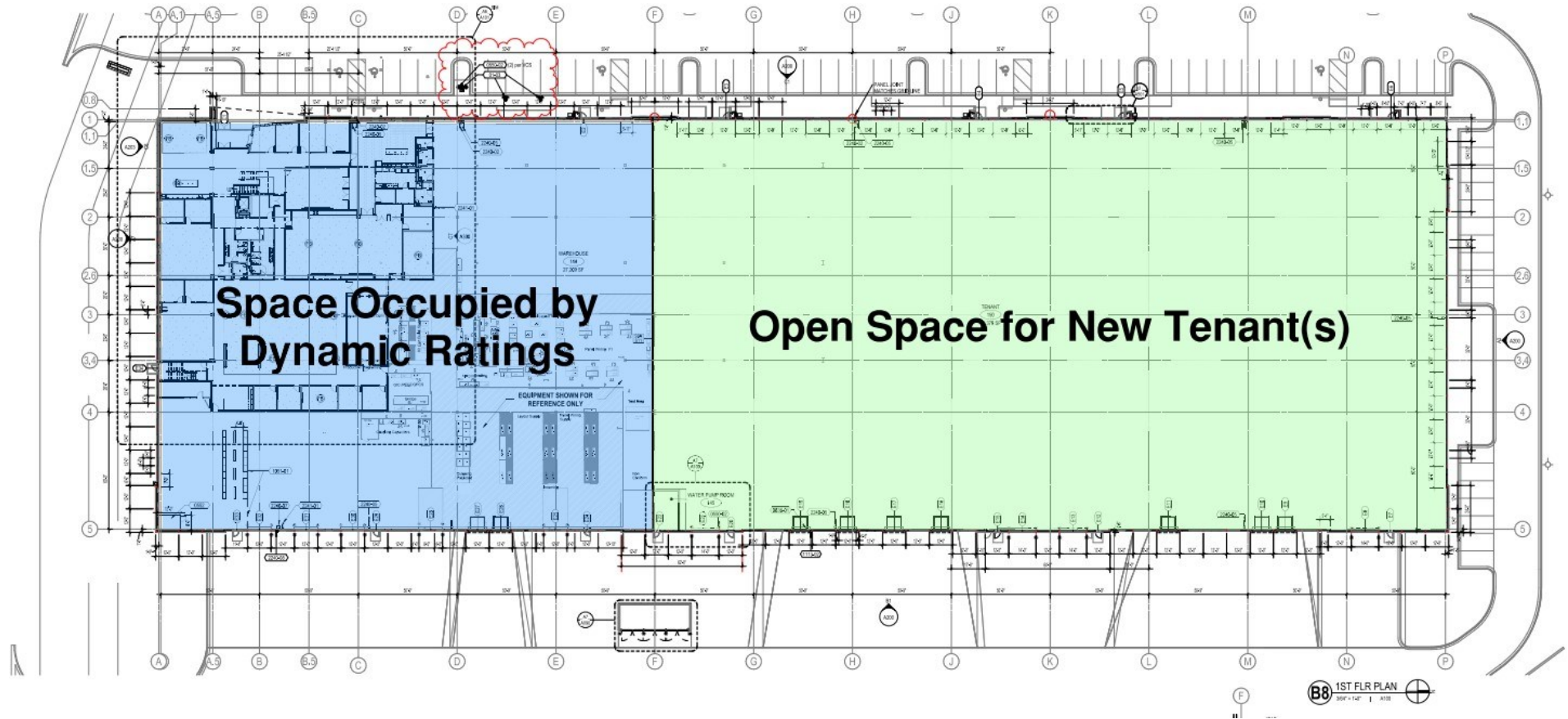
Matthew Judson, President
262-695-8800
matt.judson@judsonrealstate.com

Judson & Associates, S.C.
2831 N. Grandview Blvd, Suite 222
Pewaukee, WI 53072

N53 W25314 Highlands Court, Sussex



N53 W25314 Highlands Court, Sussex



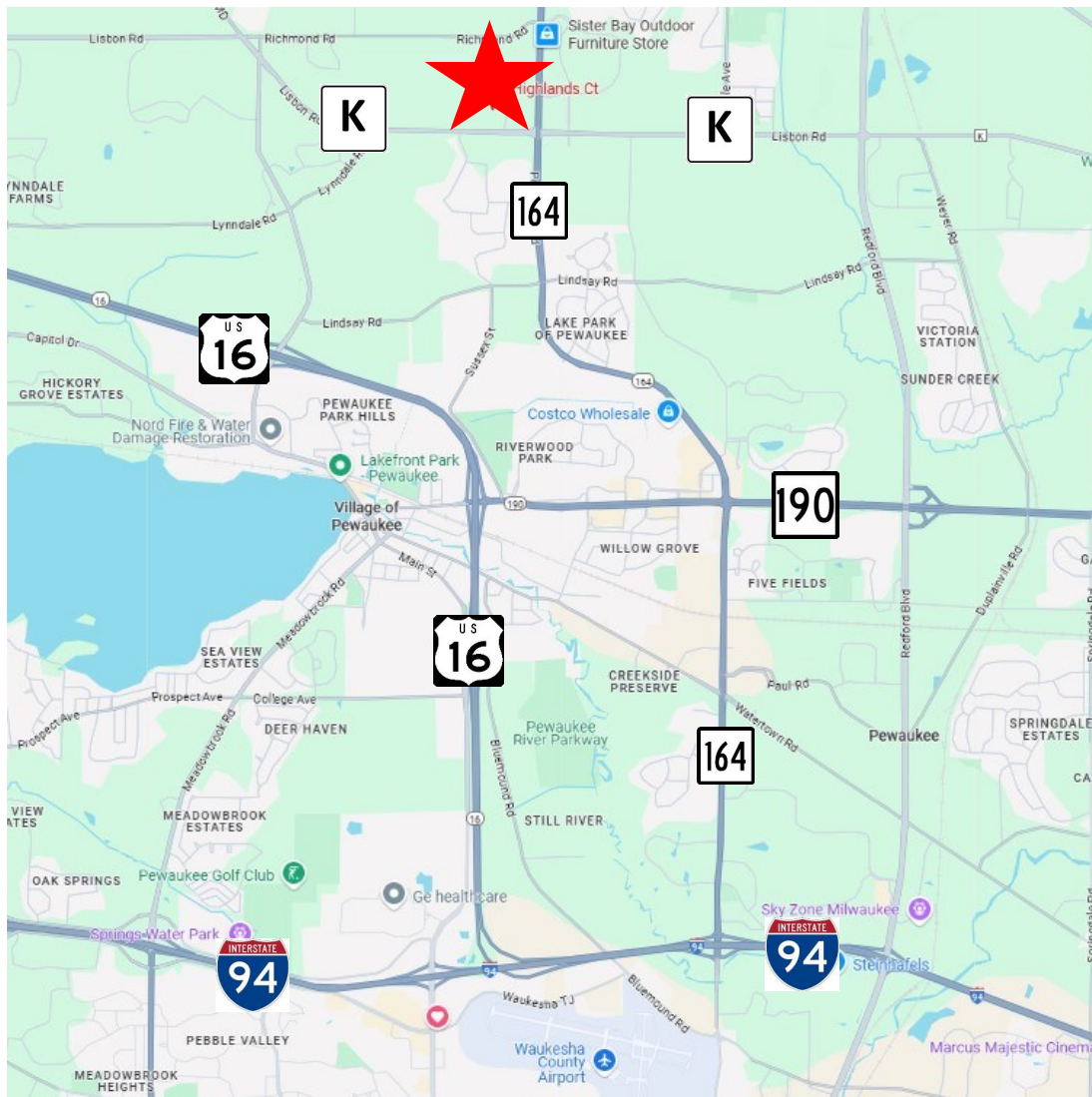
Cole Russell, Senior VP-Sales
262-695-8800
crussell@judsonrealestate.com

Matthew Judson, President
262-695-8800
matt.judson@judsonrealestate.com

2831 N Grandview Blvd, Suite 222
Pewaukee, WI 53072
www.judsonrealestate.com



N53 W25314 Highlands Court, Sussex

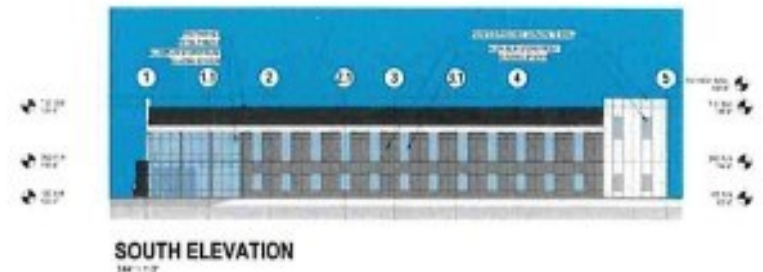
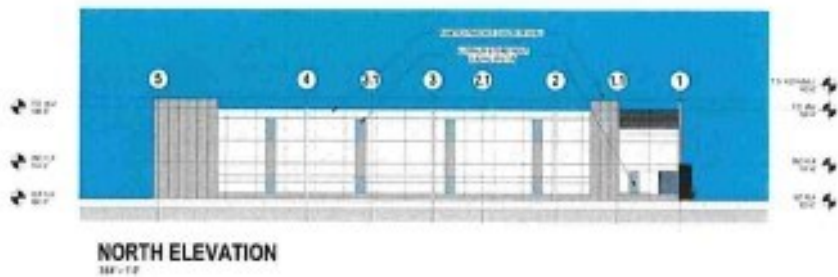
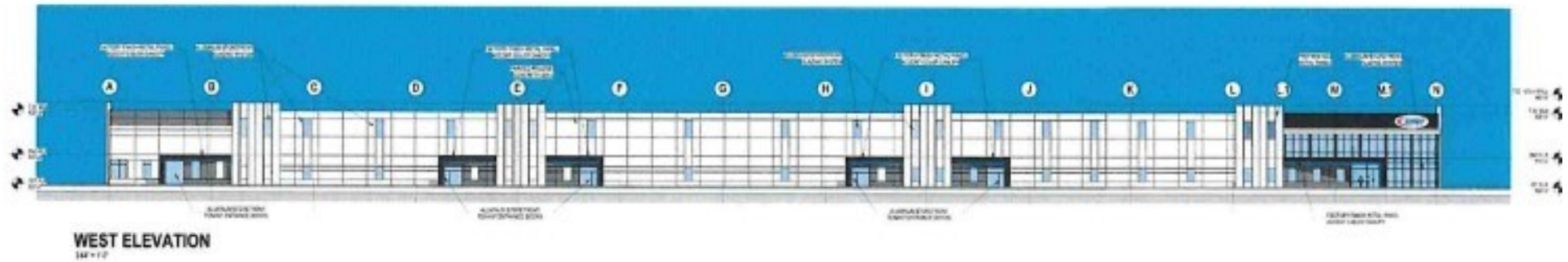
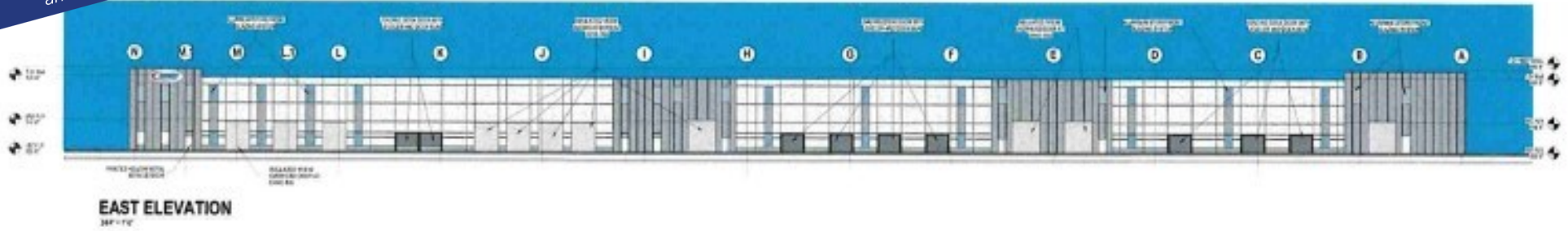


Cole Russell, Senior VP-Sales
262-695-8800
crussell@judsonrealestate.com

Matthew Judson, President
262-695-8800
matt.judson@judsonrealestate.com

2831 N Grandview Blvd, Suite 222
Pewaukee, WI 53072
www.judsonrealestate.com

N53 W25314 Highlands Court, Sussex



Cole Russell, Senior VP-Sales
262-695-8800
crussell@judsonrealstate.com

Matthew Judson, President
262-695-8800
matt.judson@judsonrealstate.com

2831 N Grandview Blvd, Suite 222
Pewaukee, WI 53072
www.judsonrealstate.com

1 Prior to negotiating on your behalf the Broker must provide you the following disclosure statement:

2 **BROKER DISCLOSURE TO CUSTOMERS**

3 You are a customer of the broker. The broker is either an agent of another party in the transaction or a subagent of another broker
4 who is the agent of another party in the transaction. The broker, or salesperson acting on behalf of the broker, may provide
5 brokerage services to you. Whenever the broker is providing brokerage services to you, the broker owes you, the customer, the
6 following duties:

7 ■ The duty to provide brokerage services to you fairly and honestly.

8 ■ The duty to exercise reasonable skill and care in providing brokerage services to you.

9 ■ The duty to provide you with accurate information about market conditions within a reasonable time if you request it, unless
10 disclosure of the information is prohibited by law.

11 ■ The duty to disclose to you in writing certain material adverse facts about a property, unless disclosure of the information is
12 prohibited by law (See Lines 47-55).

13 ■ The duty to protect your confidentiality. Unless the law requires it, the broker will not disclose your confidential information or the
14 confidential information of other parties (See Lines 22-39).

15 ■ The duty to safeguard trust funds and other property the broker holds.

16 ■ The duty, when negotiating, to present contract proposals in an objective and unbiased manner and disclose the advantages and
17 disadvantages of the proposals.

18 Please review this information carefully. A broker or salesperson can answer your questions about brokerage services, but if you
19 need legal advice, tax advice, or a professional home inspection, contact an attorney, tax advisor, or home inspector.

20 This disclosure is required by section 452.135 of the Wisconsin statutes and is for information only. It is a plain-language summary of
21 a broker's duties to a customer under section 452.133 (1) of the Wisconsin statutes.

22 **CONFIDENTIALITY NOTICE TO CUSTOMERS**

23 **BROKER WILL KEEP CONFIDENTIAL ANY INFORMATION GIVEN TO BROKER IN CONFIDENCE, OR ANY INFORMATION**
24 **OBTAINED BY BROKER THAT HE OR SHE KNOWS A REASONABLE PERSON WOULD WANT TO BE KEPT CONFIDENTIAL,**
25 **UNLESS THE INFORMATION MUST BE DISCLOSED BY LAW OR YOU AUTHORIZE THE BROKER TO DISCLOSE PARTICULAR**
26 **INFORMATION. A BROKER SHALL CONTINUE TO KEEP THE INFORMATION CONFIDENTIAL AFTER BROKER IS NO LONGER**
27 **PROVIDING BROKERAGE SERVICES TO YOU.**

28 **THE FOLLOWING INFORMATION IS REQUIRED TO BE DISCLOSED BY LAW:**

29 1. **MATERIAL ADVERSE FACTS, AS DEFINED IN SECTION 452.01 (5g) OF THE WISCONSIN STATUTES (SEE LINES 47-55),**

30 2. **ANY FACTS KNOWN BY THE BROKER THAT CONTRADICT ANY INFORMATION INCLUDED IN A WRITTEN INSPECTION**
31 **REPORT ON THE PROPERTY OR REAL ESTATE THAT IS THE SUBJECT OF THE TRANSACTION.**

32 **TO ENSURE THAT THE BROKER IS AWARE OF WHAT SPECIFIC INFORMATION YOU CONSIDER CONFIDENTIAL, YOU MAY LIST**
33 **THAT INFORMATION BELOW (SEE LINES 35-36). AT A LATER TIME, YOU MAY ALSO PROVIDE THE BROKER WITH OTHER**
34 **INFORMATION YOU CONSIDER TO BE CONFIDENTIAL.**

35 **CONFIDENTIAL INFORMATION:**

36 _____

37 **NONCONFIDENTIAL INFORMATION (The following information may be disclosed by Broker):**

38 _____

39 **(INSERT INFORMATION YOU AUTHORIZE THE BROKER TO DISCLOSE SUCH AS FINANCIAL QUALIFICATION INFORMATION.)**

40 **CONSENT TO TELEPHONE SOLICITATION**

41 **I/We agree that the Broker and any affiliated settlement service providers (for example, a mortgage company or title company) may**
42 **call our/my home or cell phone numbers regarding issues, goods and services related to the real estate transaction until I/We**
43 **withdraw this consent in writing. List Home/Cell Numbers:**

44 **SEX OFFENDER REGISTRY**

45 **Notice: You may obtain information about the sex offender registry and persons registered with the registry by contacting the**
46 **Wisconsin Department of Corrections on the Internet at: <http://offender.doc.state.wi.us/public/> or by phone at 877-234-0085.**

47 **DEFINITION OF MATERIAL ADVERSE FACTS**

48 **a "material adverse fact" is defined in Wis. Stat. § 452.01 (5g) as an adverse fact that a party indicates is of such significance, or that**
49 **is generally recognized by a competent licensee as being of such significance to a reasonable party, that it affects or would affect**
50 **the party's decision to enter into a contract or agreement concerning a transaction or affects or would affect the party's decision**
51 **about the terms of such a contract or agreement. An "adverse fact" is defined in Wis. Stat. § 452.01 (1e) as a condition or occurrence**
52 **that a competent licensee generally recognizes will significantly and adversely affect the value of the property, significantly reduce**
53 **the structural integrity of improvements to real estate, or present a significant health risk to occupants of the property; or information**
54 **that indicates that a party to a transaction is not able to or does not intend to meet his or her obligations under a contract or**
55 **agreement made concerning the transaction.**

No representation is made as to the legal validity of any provision or the adequacy
of any provision in any specific transaction.

Copyright 2006 by Wisconsin REALTORS[®] Association
Drafted by Attorney Richard J. Staff

Judson & Associates SC
2831 N Grandview Blvd, Suite 222, Pewaukee WI 53072
Phone: (262) 695-8800
Fax: (262) 695-8801

NAIOP

COMMERCIAL REAL ESTATE
DEVELOPMENT ASSOCIATION
WISCONSIN CHAPTER