

FOR LEASE

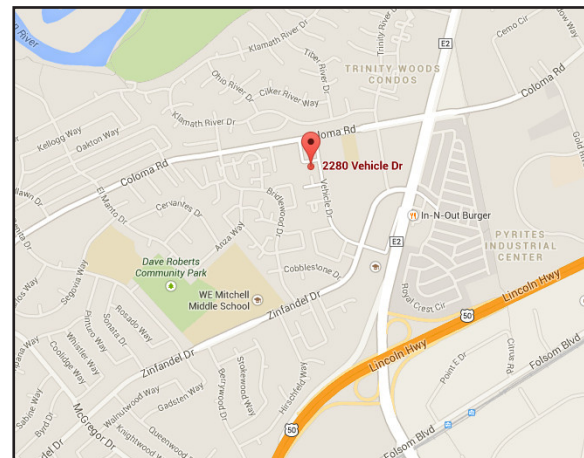
2280 Vehicle Drive
Rancho Cordova, CA 95670



Property Highlights:

- Coloma Square Business Offices for lease
- 357 s.f. to 11,973 s.f. office space available
- Located just off the Sunrise Boulevard corridor
- Immediate access from highways 50
- Fully improved offices featuring multiple private offices
- Extensive build-outs and window lines
- Suite 110: 1,775 sf; Suite 120: 1,663 sf; Suite 130: 1,601 .sf.
- Suite 200: 1,449 sf; Suite 205/235: 3,282 sf;
- Suite 230/240: 1,846 s.f.; Suite 220: 357 sf.
- Building Signage available
- Abundant parking

Lease Rate: \$ 0.99 per s.f. modified gross

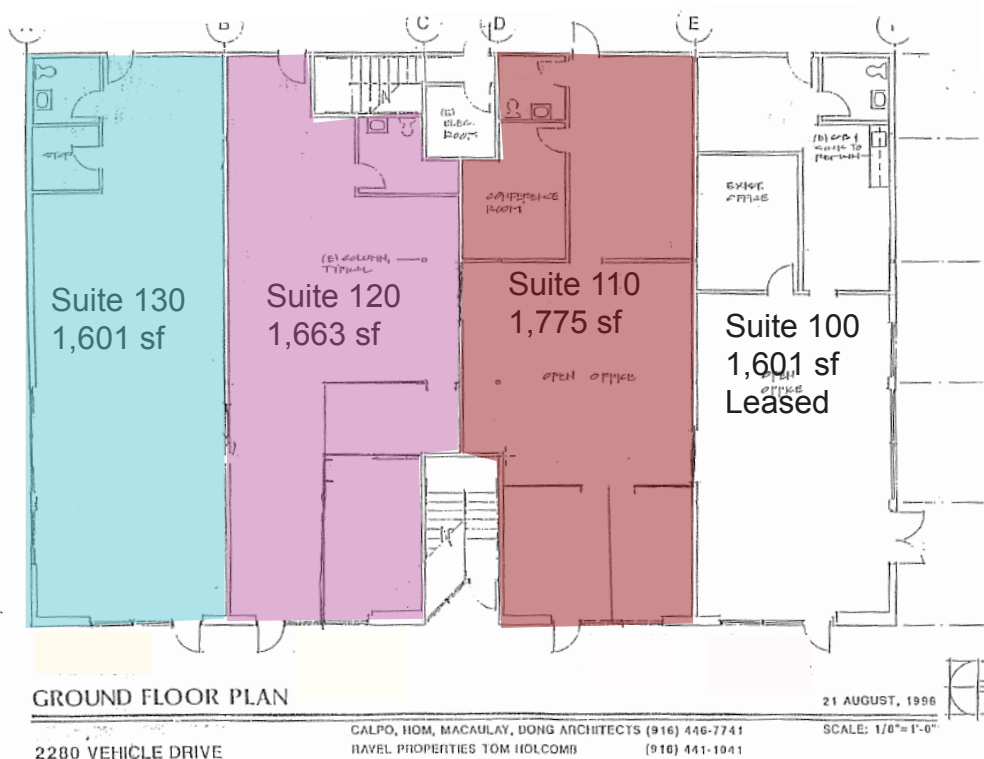


For further information, please contact:
Ranga Pathak
DRE Lic. No. 01364897
Tel: (916)201-9247
ranga.pathak@norcalgold.com

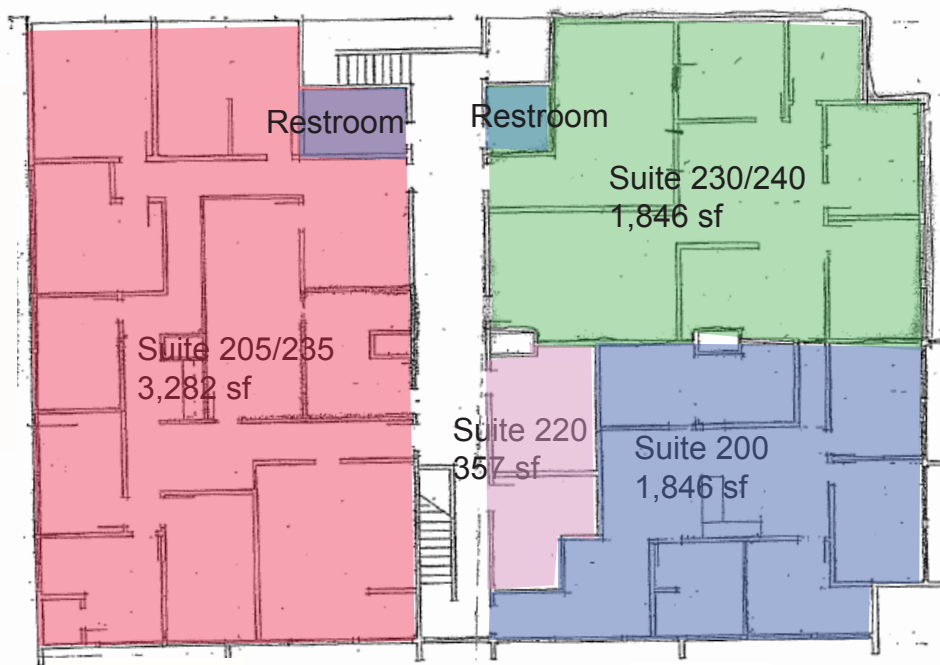


The information contained herein has been obtained from sources deemed to be reliable. RE/MAX Gold has not verified and makes no guarantees, warranties or representations regarding the accuracy of the information. You need to conduct a careful, independent evaluation of the property to establish its suitability for your purposes.

2280 Vehicle Drive Rancho Cordova, CA 95670



First Floor Plan

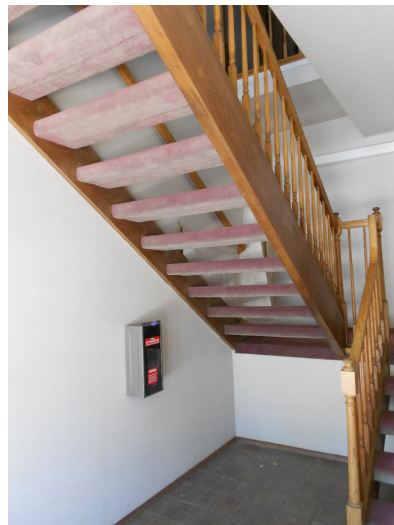
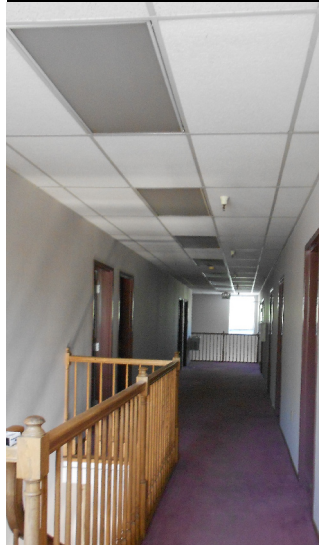


Second Floor Plan

The information contained herein has been obtained from sources deemed to be reliable. RE/MAX Gold has not verified and makes no guarantees, warranties or representations regarding the accuracy of the information. You need to conduct a careful, independent evaluation of the property to establish its suitability for your purposes.



2280 Vehicle Drive Rancho Cordova, CA 95670



The information contained herein has been obtained from sources deemed to be reliable. RE/MAX Gold has not verified and makes no guarantees, warranties or representations regarding the accuracy of the information. You need to conduct a careful, independent evaluation of the property to establish its suitability for your purposes.

