

# FOR LEASE - DENTAL / OFFICE SUITE



**1929 N WASHINGTON ST, SUITE OO, BISMARCK**

## PROPERTY DESCRIPTION

Discover an outstanding leasing opportunity at 1929 N Washington St. This property, located within the Northbrook Professional Center, promises exceptional visibility in a high-traffic location. Boasting common restrooms and ample parking in a spacious lot, tenants can enjoy the convenience of this prime space. With signage opportunities and impressive accessibility from I-94, this property is poised to accommodate diverse business needs. Don't miss the chance to elevate your business in this thriving commercial hub.

## PROPERTY HIGHLIGHTS

- High Traffic Location in the Northbrook Professional Center on North Washington Street
- Previously Working Dental Office
- 7 Operatories w/Plumbing Throughout
- Lobby / Reception Area
- Front Desk w/Built-In Cabinetry
- 2 Restrooms in Space

## OFFERING SUMMARY

<b>Lease Rate:</b>	22.00 PSF
<b>Lease Space:</b>	3,030 USF / 3,757 RSF
<b>Availability:</b>	September 2026

## NEARBY BUSINESSES

Arco Gas Station	Thrifty White
Rustic Petals	Total Tax Solutions

- Located on the Busy South and West Entrance Corridor
- Modern Updated Finishes
- Common Restrooms
- Signage Opportunities
- Generous Parking in Large Lot
- 14,435 Vehicles Per Day on Washington St
- Easy Access from I-94



George Yineman  
Associate Broker/Commercial REALTOR®  
George@risepropertybrokers.com  
c: 701.319.3000

## RISE PROPERTY BROKERS

1010 E Central Ave  
Bismarck, ND 58501  
o: 701.222.0232

[risepropertybrokers.com](http://risepropertybrokers.com)

*All information herein has been obtained from sources deemed reliable. No warranty or guarantee is made as to the accuracy of the information.*

# PROPERTY PHOTOS



George Yineman  
Associate Broker/Commercial REALTOR®  
George@risepropertybrokers.com  
c: 701.319.3000

*All information herein has been obtained from sources deemed reliable.  
No warranty or guarantee is made as to the accuracy of the information.*

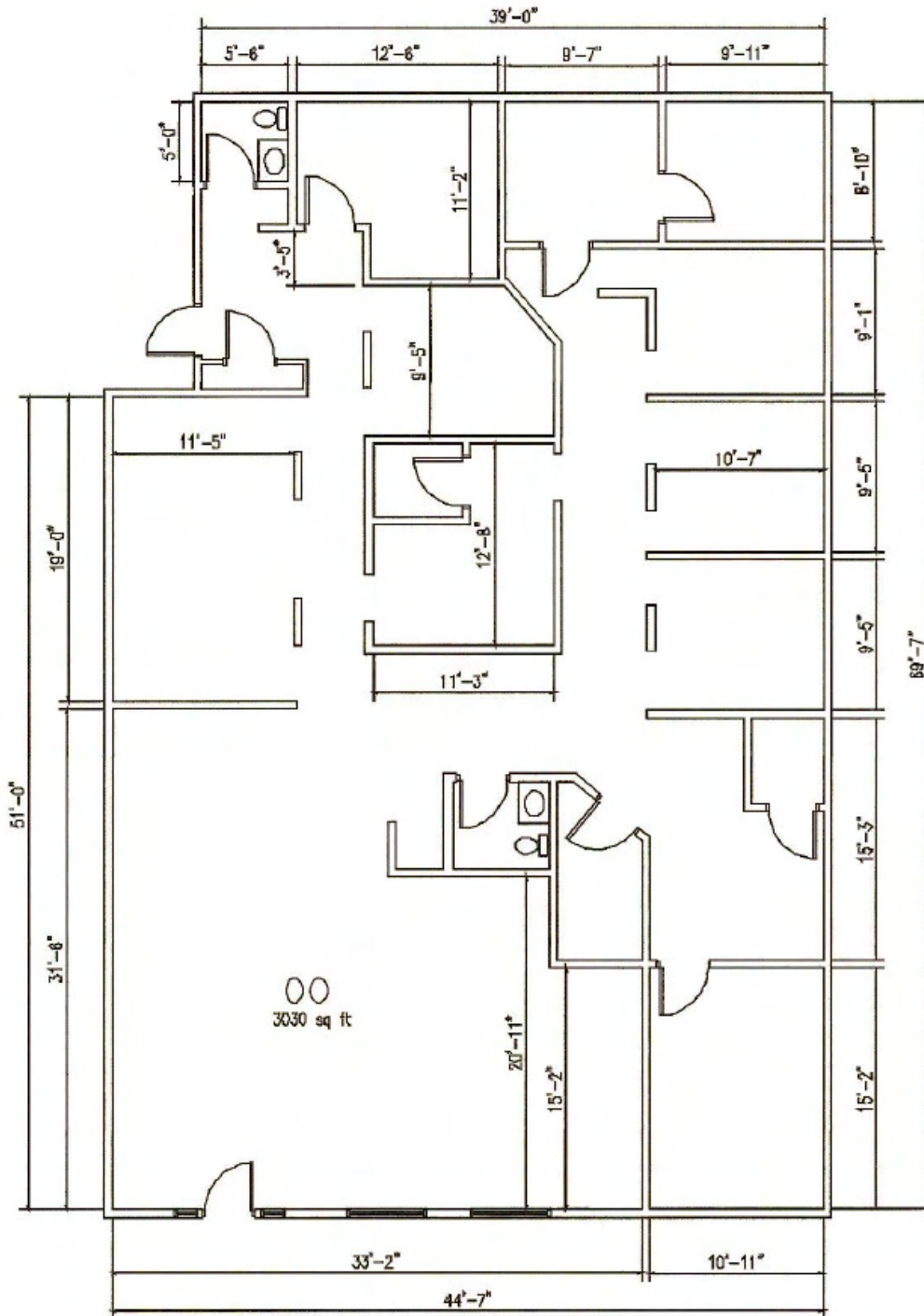
**RISE PROPERTY BROKERS**

1010 E Central Ave  
Bismarck, ND 58501

o: 701.222.0232

[risepropertybrokers.com](http://risepropertybrokers.com)

# FLOOR PLAN



George Yineman  
Associate Broker/Commercial REALTOR®  
George@risepropertybrokers.com  
c: 701.319.3000

## RISE PROPERTY BROKERS

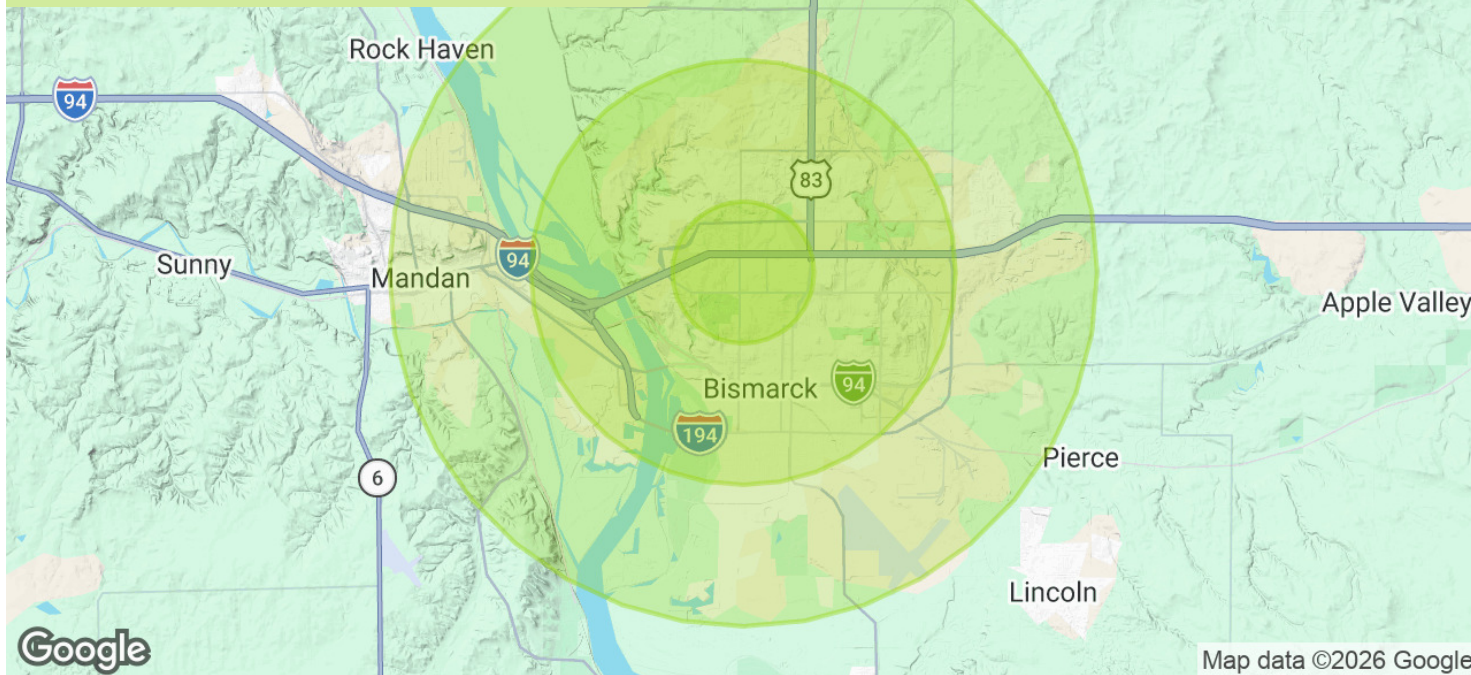
1010 E Central Ave  
Bismarck, ND 58501

o: 701.222.0232

[risepropertybrokers.com](http://risepropertybrokers.com)

All information herein has been obtained from sources deemed reliable.  
No warranty or guarantee is made as to the accuracy of the information.

# DEMOGRAPHIC SUMMARY



## POPULATION

	1 MILE	3 MILES	5 MILES
Total Population	12,299	68,161	98,183
Average Age	41	41	40

## HOUSEHOLDS & INCOME

	1 MILE	3 MILES	5 MILES
Total Households	5,801	29,836	41,784
# of Persons per HH	2.1	2.3	2.3
Average HH Income	\$86,540	\$93,639	\$95,899
Average House Value	\$272,651	\$311,850	\$312,276

2020 American Community Survey (ACS)



George Yineman  
 Associate Broker/Commercial REALTOR®  
 George@risepropertybrokers.com  
 c: 701.319.3000

## RISE PROPERTY BROKERS

1010 E Central Ave  
 Bismarck, ND 58501  
 o: 701.222.0232

[risepropertybrokers.com](http://risepropertybrokers.com)

All information herein has been obtained from sources deemed reliable.  
 No warranty or guarantee is made as to the accuracy of the information.

# PROPERTY LOCATION



## LOCATION OVERVIEW

Located on High Traffic N Washington Street

Near I-94



George Yineman  
Associate Broker/Commercial REALTOR®

George@risepropertybrokers.com  
c: 701.319.3000

All information herein has been obtained from sources deemed reliable.  
No warranty or guarantee is made as to the accuracy of the information.

## RISE PROPERTY BROKERS

1010 E Central Ave  
Bismarck, ND 58501

o: 701.222.0232

[risepropertybrokers.com](http://risepropertybrokers.com)



# COMMERCIAL REAL ESTATE AT AN ELEVATED LEVEL



## George Yineman

*Broker Associate / Commercial REALTOR®*

701.319.3000

## THE RISE TEAM



### Adam Geiger

**Broker / President**

701.425.9427



### George Yineman

**Broker Associate /  
Commercial REALTOR®**

701.319.3000



### Jon Lee

**Broker Associate /  
Commercial REALTOR®**

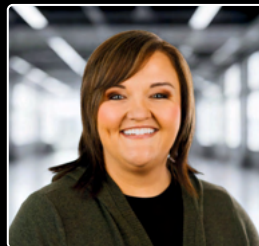
701.400.4445



### Regina Yineman

**VP of Operations / REALTOR®**

701.471.3140



### Maleah Nelsen

**Licensed Agent /  
Marketing Specialist**

701.301.0259



### Fred Koenig

**Commercial REALTOR®**

701.226.7206



### Tyrus Jangula

**Sales Assistant /  
Commercial Agent**

701.390.2909