

NEW TO MARKET



FULLY FINISHED MEDICAL SPEC SUITE AVAILABLE NOW

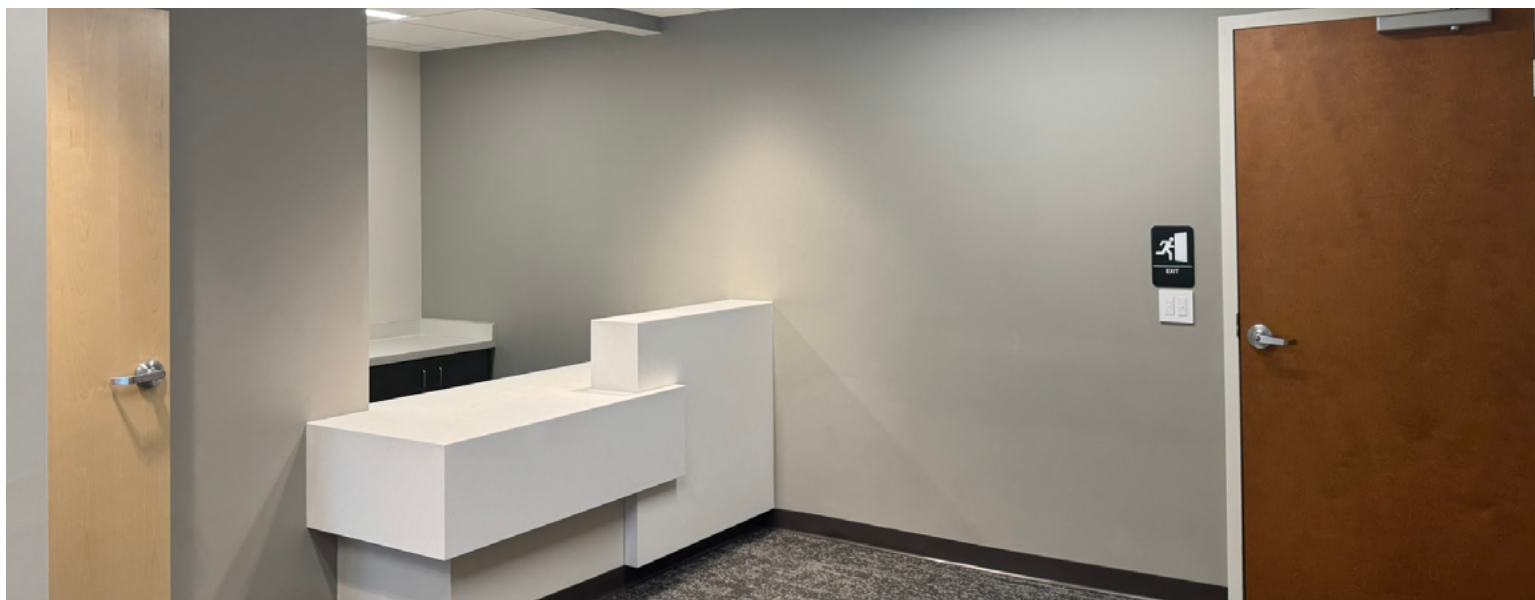
- Newly renovated suite – Suite 204: 1,375 RSF
- High-end medical finishes
- Move-in ready
- Flexible lease term
- Short and simple lease form
- Great for sole practitioners

Virtual Tour



BUILDING HIGHLIGHTS

- Adjacent to Phoenixville Hospital with direct access via connector
- Abundant parking surrounding the hospital
- Multi-tenant medical office building
- Beautiful open lobby
- Fully ADA accessible



Building owned and managed by
HEALTHCARE REALTY

NAI Geis Realty
Group, Inc.

LEASING INFORMATION

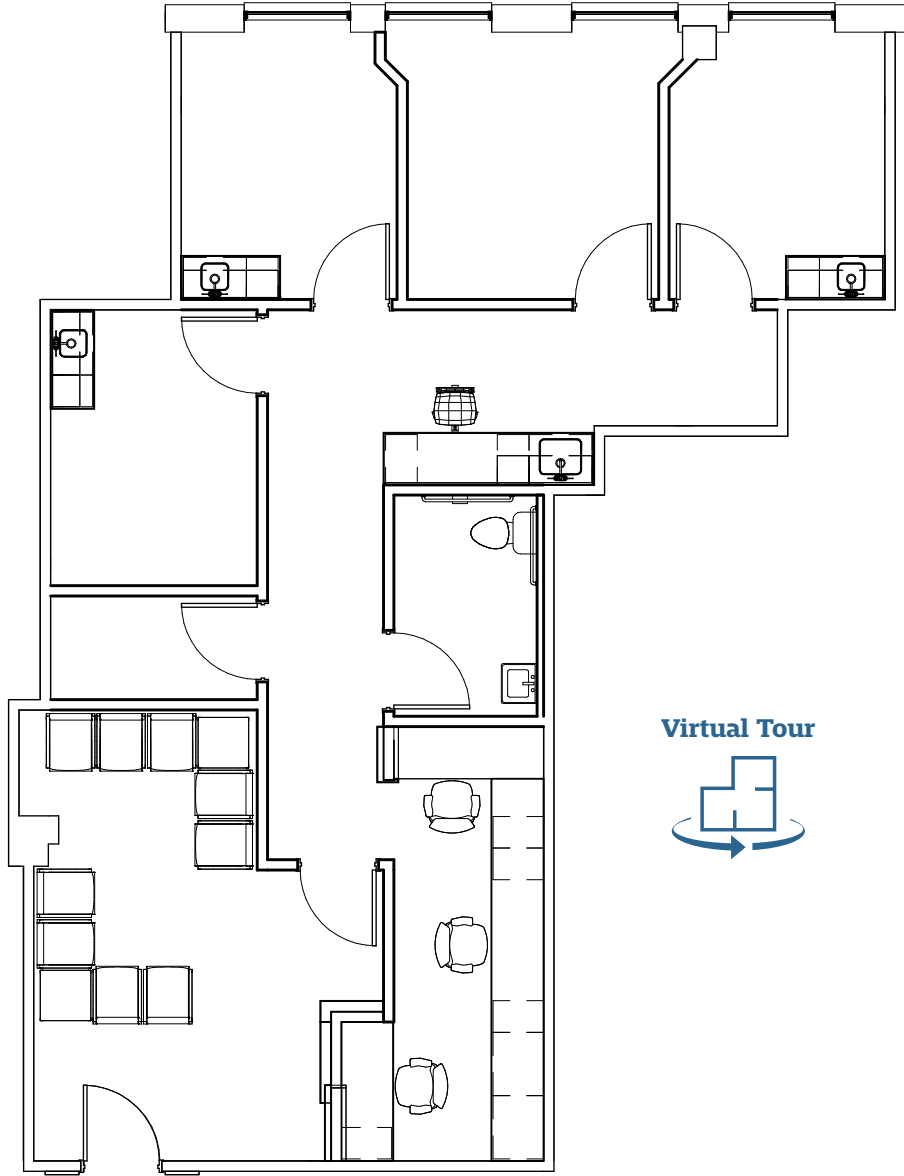
Tom Hummel
thummel@geisrealty.com
215.568.2505

Dan Moller
dmoller@geisrealty.com
215.701.0722

824 Main Street, Phoenixville, PA

Medical Office Space for Available for Lease

Suite 204: 1,375 RSF



Virtual Tour



LEASING INFORMATION

Building owned and managed by
HEALTHCARE REALTY



Tom Hummel
thummel@geisrealty.com
215.568.2505

Dan Moller
dmoller@geisrealty.com
215.701.0722

824 Main Street, Phoenixville, PA

Medical Office Space for Available for Lease



Virtual Tour



Building owned and managed by
HEALTHCARE REALTY

NAI Geis Realty
Group, Inc.

LEASING INFORMATION

Tom Hummel
thummel@geisrealty.com
215.568.2505

Dan Moller
dmoller@geisrealty.com
215.701.0722