



 **JLL** SEE A BRIGHTER WAY

2020 Baltimore

Kansas City, MO

1,865 SF Ground Floor Retail/Office Space Available

Jayme Miller
+ 1 816 261 2006
jayme.miller@jll.com

Patrick Meraz, CCIM
+ 1 913 469 4622
patrick.meraz@jll.com

PROPERTY OVERVIEW

2020 Baltimore Ave.,
Kansas City, MO

\$ \$23.50/SF Full Service Lease Rate
Rate includes utilities and CAM

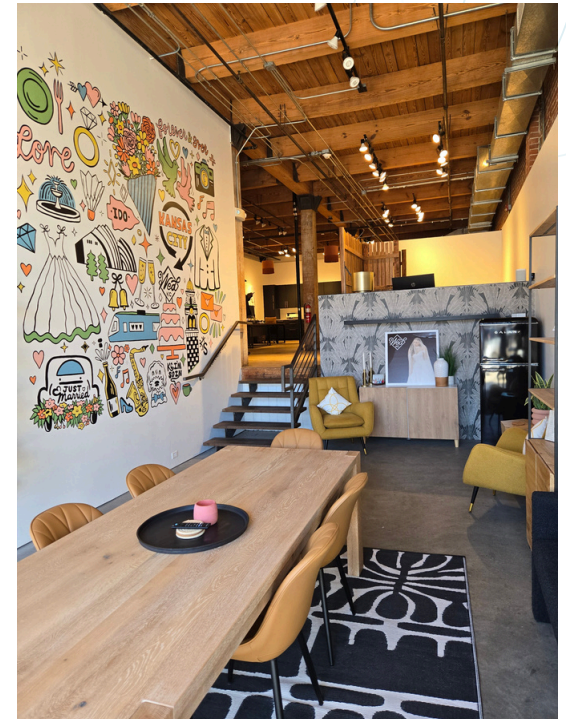
📍 Attractive brick and timber build out with access to rooftop deck

P Convenient parking 3/1,000 SF

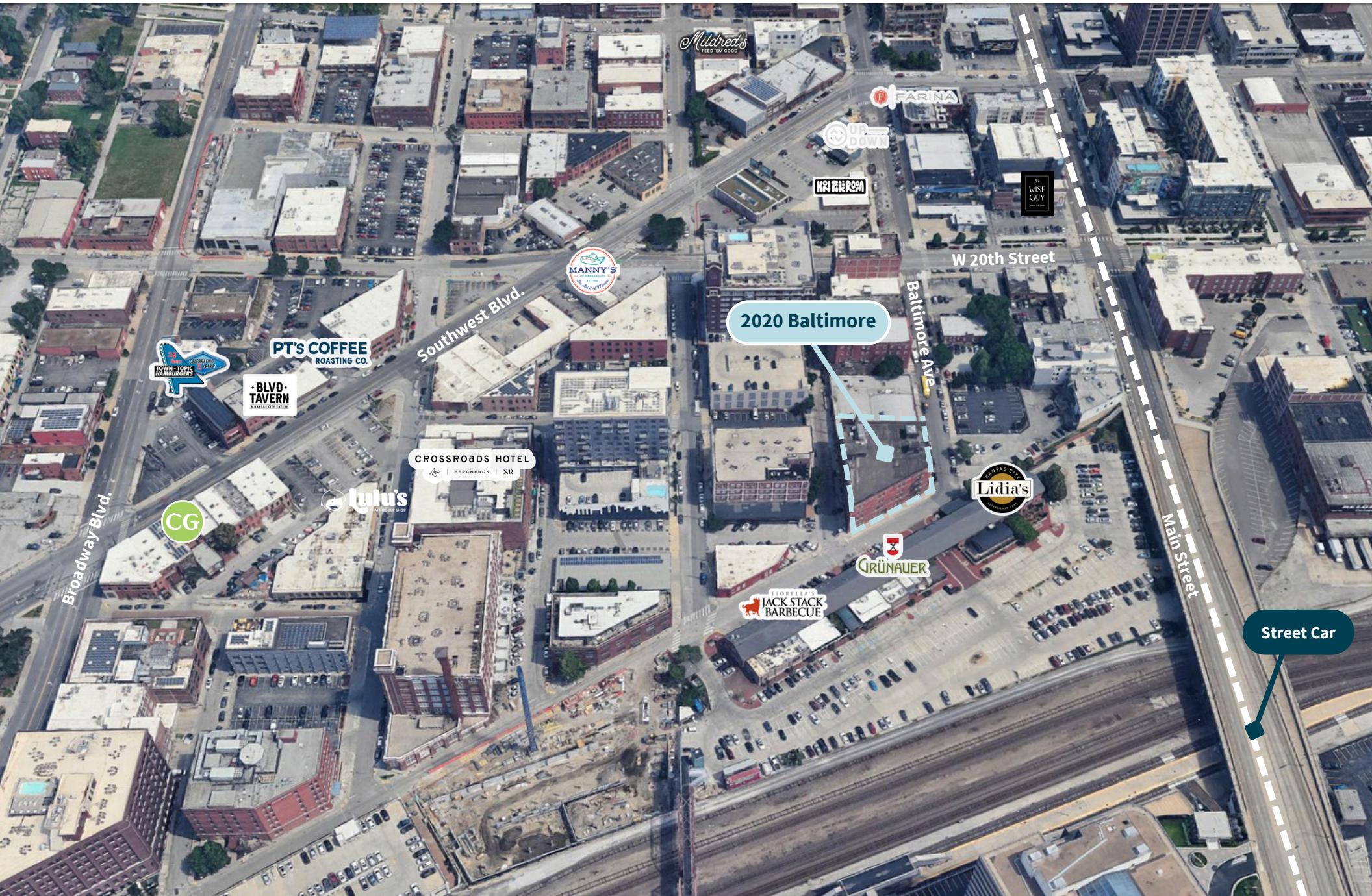
📍 Located in the heart of the Crossroads district; prime location for First Fridays

🚶 Walkable to the Streetcar, and an array of restaurants, retail, and hotels

Suite 105 - 1,865 RSF



SURROUNDING AREA



Milled's
FEED 'EM GOOD

FARINA

UP
DOWN

KRIBBER

THE WISE GUY

W 20th Street

2020 Baltimore

Baltimore Ave

PT'S COFFEE
ROASTING CO.

BLVD-TAVERN
A KANGAROO BREWERY

CROSSROADS HOTEL
PERCHERON | NR

lulu's

CG

MANNY'S
OF KANSAS CITY
EST. 1978

KANSAS CITY
Lidia's

GRÜNAUER

FLORENCE'S
JACK STACK
BARBECUE

Street Car

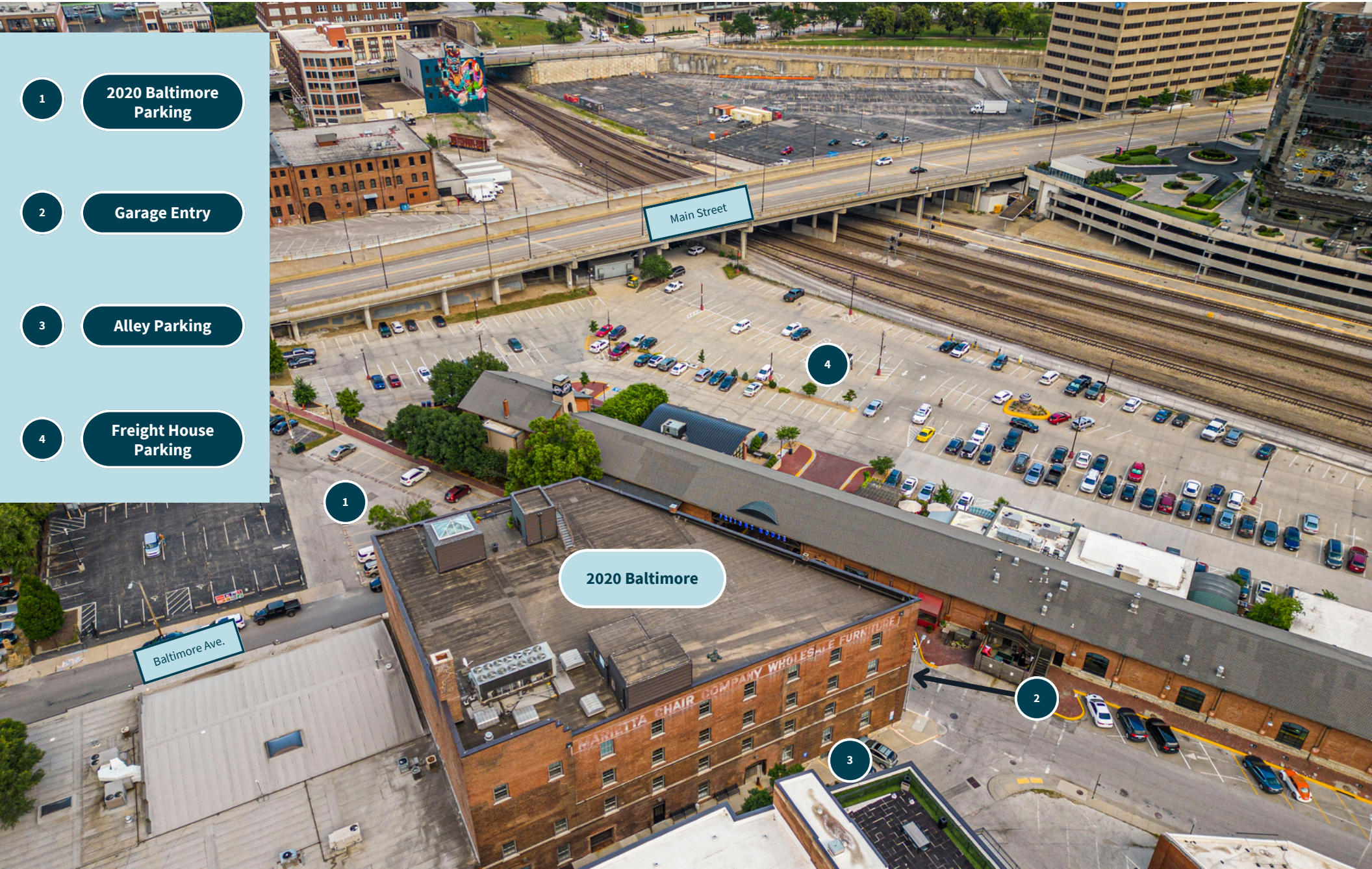
Broadway Blvd.

Southwest Blvd.

Main Street

PARKING OPTIONS

- 1 2020 Baltimore Parking
- 2 Garage Entry
- 3 Alley Parking
- 4 Freight House Parking



1

2020 Baltimore

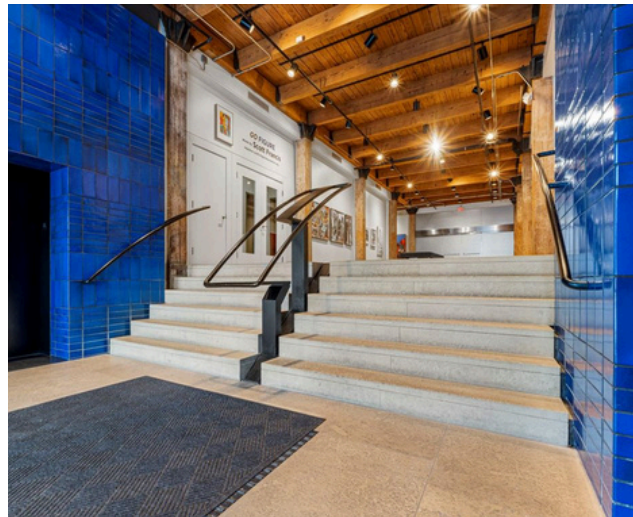
Baltimore Ave.

Main Street

4

2

3



JLL

Jayme Miller
+ 1 816 261 2006
jayme.miller@jll.com

Patrick Meraz, CCIM
+ 1 913 469 4622
patrick.meraz@jll.com

Although information has been obtained from sources deemed reliable, JLL does not make any guarantees, warranties or representations, express or implied, as to the completeness or accuracy as to the information contained herein. Any projections, opinions, assumptions or estimates used are for example only. There may be differences between projected and actual results, and those differences may be material. JLL does not accept any liability for any loss or damage suffered by any party resulting from reliance on this information. If the recipient of this information has signed a confidentiality agreement with JLL regarding this matter, this information is subject to the terms of that agreement. ©2025 Jones Lang LaSalle Brokerage, Inc. All rights reserved.