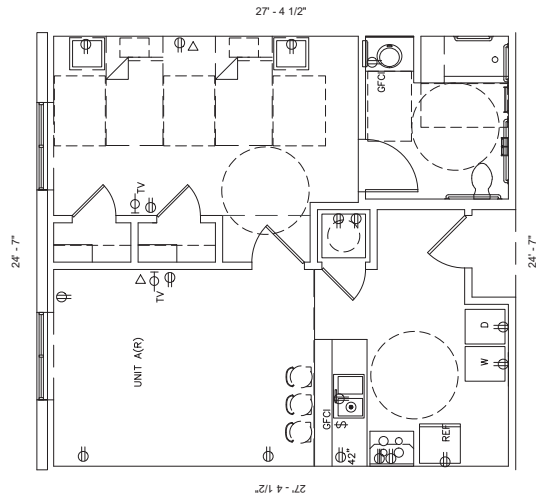


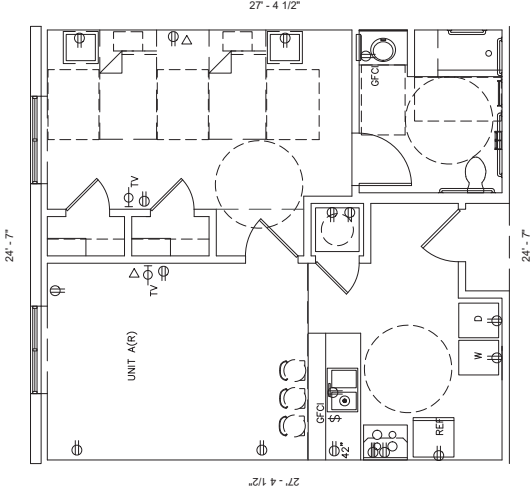
UNIT A.1 (143) - ONE BEDROOM (WITH 2 SINGLE BEDS)

SCALE: 1/4"=1'-0"
 NET SF: (673 SF)
 HEIGHT FROM FLOOR TO CEILING: APPROX. 9';
 EXCEPT KITCHEN & BATHROOM APPROX. 8'



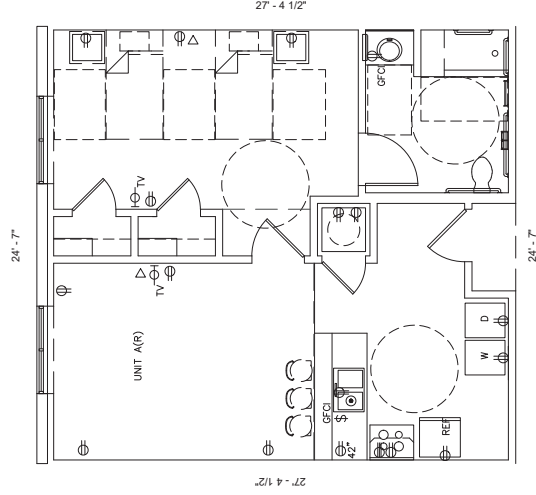
UNIT A.1 (338) - ONE BEDROOM (WITH 2 SINGLE BEDS)

SCALE: 1/4"=1'-0"
 NET SF: (673 SF)
 HEIGHT FROM FLOOR TO CEILING: APPROX. 9';
 EXCEPT KITCHEN & BATHROOM APPROX. 8'



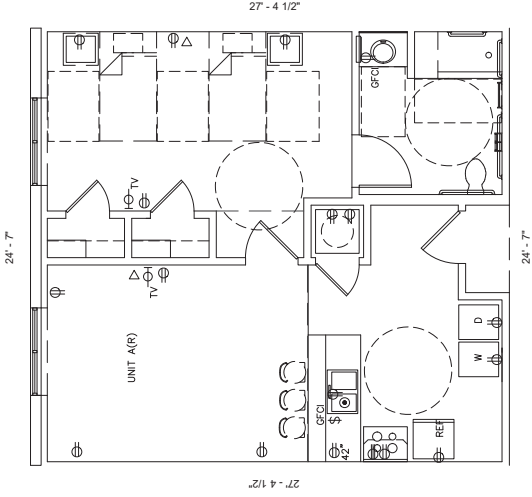
UNIT A.1 (238) - ONE BEDROOM (WITH 2 SINGLE BEDS)

SCALE: 1/4"=1'-0"
 NET SF: (673 SF)
 HEIGHT FROM FLOOR TO CEILING: APPROX. 9';
 EXCEPT KITCHEN & BATHROOM APPROX. 8'



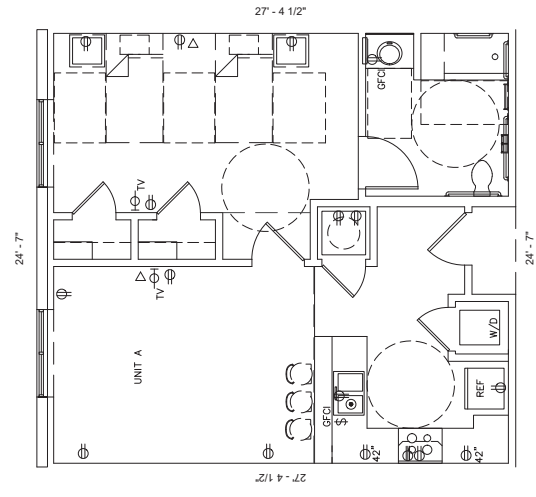
UNIT A.1 (339) - ONE BEDROOM (WITH 2 SINGLE BEDS)

SCALE: 1/4"=1'-0"
 NET SF: (673 SF)
 HEIGHT FROM FLOOR TO CEILING: APPROX. 9';
 EXCEPT KITCHEN & BATHROOM APPROX. 8'



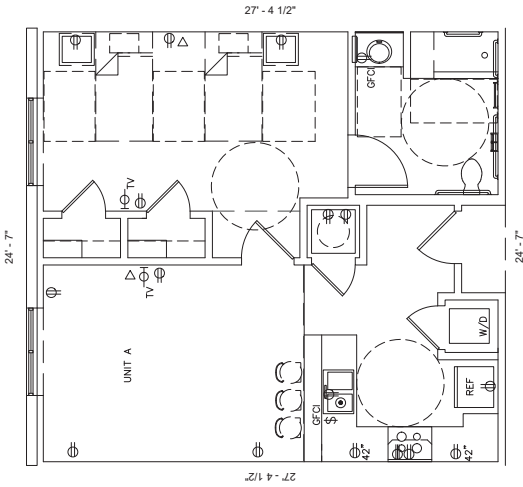
UNIT A.1 (239) - ONE BEDROOM (WITH 2 SINGLE BEDS)

SCALE: 1/4"=1'-0"
 NET SF: (673 SF)
 HEIGHT FROM FLOOR TO CEILING: APPROX. 9';
 EXCEPT KITCHEN & BATHROOM APPROX. 8'



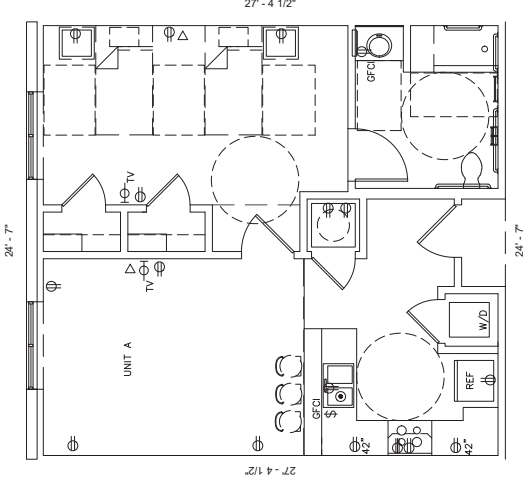
UNIT A (148) - ONE BEDROOM (WITH 2 SINGLE BEDS)

SCALE: 1/4"=1'-0"
 NET SF: (682 SF)
 HEIGHT FROM FLOOR TO CEILING: APPROX. 9';
 EXCEPT KITCHEN & BATHROOM APPROX. 8'



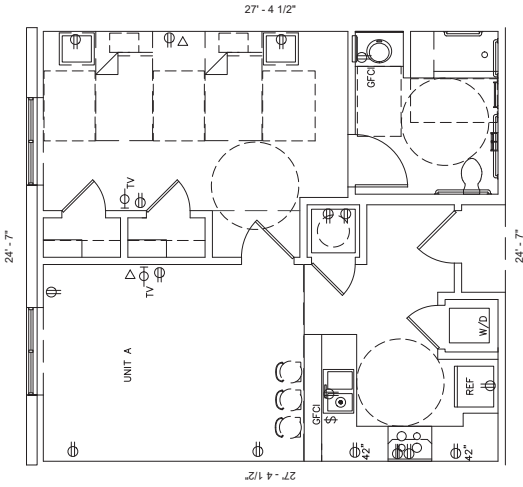
UNIT A (232) - ONE BEDROOM (WITH 2 SINGLE BEDS)

SCALE: 1/4"=1'-0"
 NET SF: (682 SF)
 HEIGHT FROM FLOOR TO CEILING: APPROX. 9';
 EXCEPT KITCHEN & BATHROOM APPROX. 8'



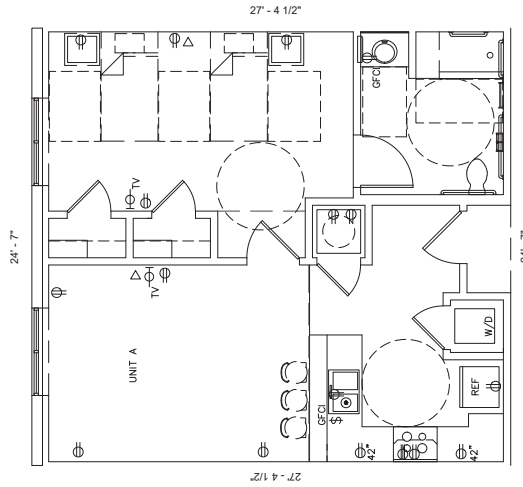
UNIT A (236) - ONE BEDROOM (WITH 2 SINGLE BEDS)

SCALE: 1/4"=1'-0"
 NET SF: (682 SF)
 HEIGHT FROM FLOOR TO CEILING: APPROX. 9';
 EXCEPT KITCHEN & BATHROOM APPROX. 8'



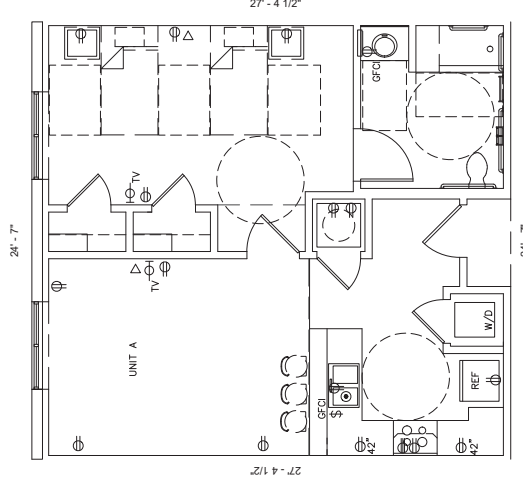
UNIT A (237) - ONE BEDROOM (WITH 2 SINGLE BEDS)

SCALE: 1/4"=1'-0"
 NET SF: (682 SF)
 HEIGHT FROM FLOOR TO CEILING: APPROX. 9';
 EXCEPT KITCHEN & BATHROOM APPROX. 8'



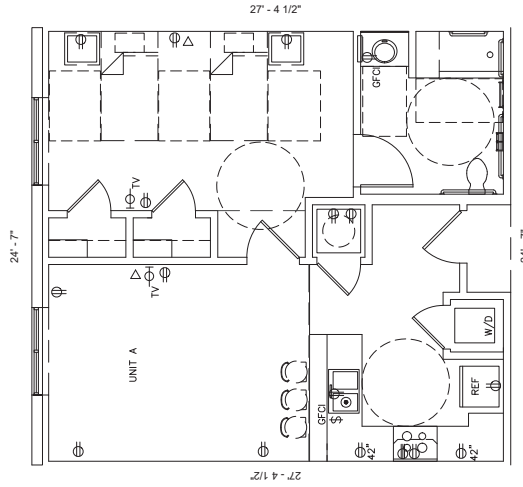
UNIT A (240) - ONE BEDROOM (WITH 2 SINGLE BEDS)

SCALE: 1/4"=1'-0"
 NET SF: (682 SF)
 HEIGHT FROM FLOOR TO CEILING: APPROX. 9';
 EXCEPT KITCHEN & BATHROOM APPROX. 8'



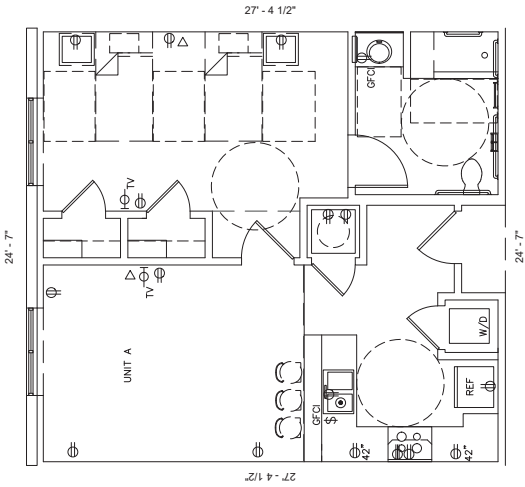
UNIT A (241) - ONE BEDROOM (WITH 2 SINGLE BEDS)

SCALE: 1/4"=1'-0"
 NET SF: (682 SF)
 HEIGHT FROM FLOOR TO CEILING: APPROX. 9';
 EXCEPT KITCHEN & BATHROOM APPROX. 8'



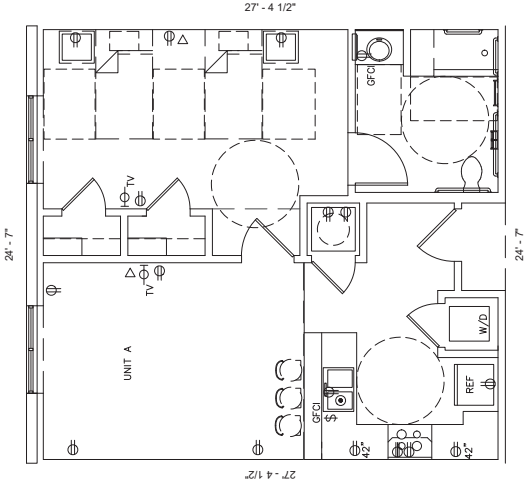
UNIT A (332) - ONE BEDROOM (WITH 2 SINGLE BEDS)

SCALE: 1/4"=1'-0"
 NET SF: (682 SF)
 HEIGHT FROM FLOOR TO CEILING: APPROX. 9';
 EXCEPT KITCHEN & BATHROOM APPROX. 8'



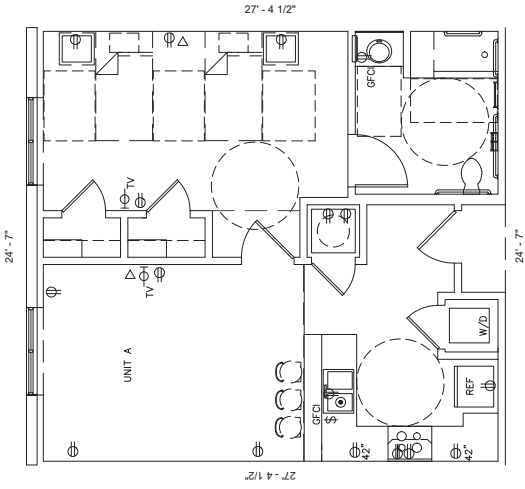
UNIT A (336) - ONE BEDROOM (WITH 2 SINGLE BEDS)

SCALE: 1/4"=1'-0"
 NET SF: (682 SF)
 HEIGHT FROM FLOOR TO CEILING: APPROX. 9';
 EXCEPT KITCHEN & BATHROOM APPROX. 8'



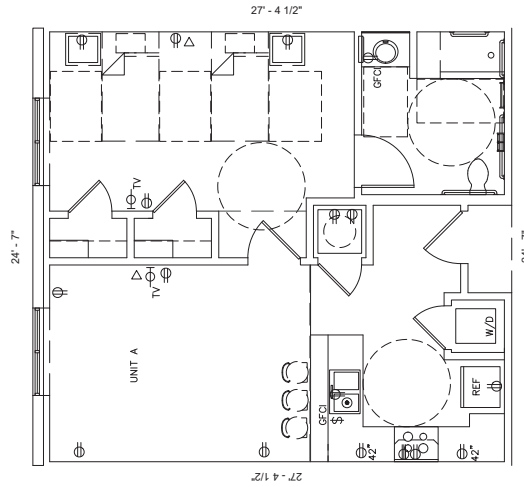
UNIT A (337) - ONE BEDROOM (WITH 2 SINGLE BEDS)

SCALE: 1/4"=1'-0"
 NET SF: (682 SF)
 HEIGHT FROM FLOOR TO CEILING: APPROX. 9';
 EXCEPT KITCHEN & BATHROOM APPROX. 8'



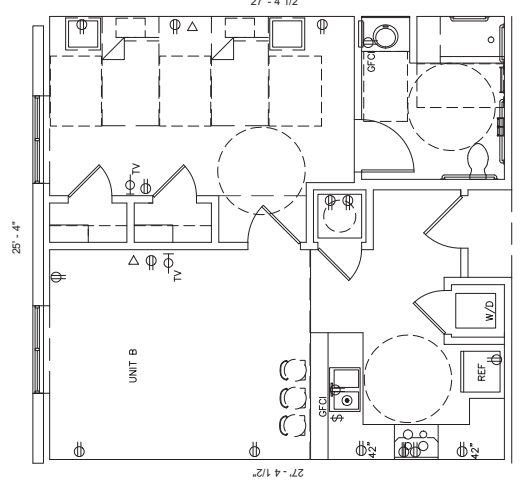
UNIT A (340) - ONE BEDROOM (WITH 2 SINGLE BEDS)

SCALE: 1/4"=1'-0"
 NET SF: (682 SF)
 HEIGHT FROM FLOOR TO CEILING: APPROX. 9';
 EXCEPT KITCHEN & BATHROOM APPROX. 8'



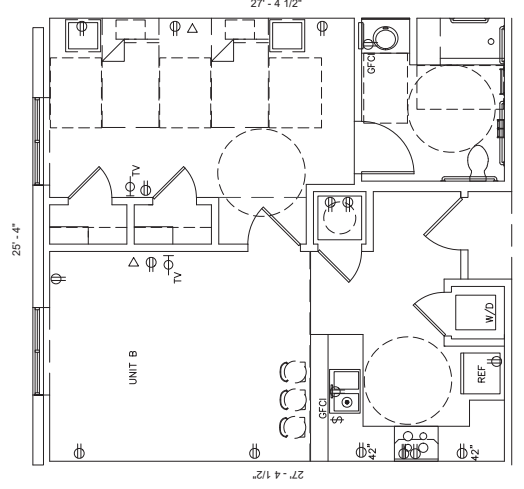
UNIT A (341) - ONE BEDROOM (WITH 2 SINGLE BEDS)

SCALE: 1/4"=1'-0"
 NET SF: (682 SF)
 HEIGHT FROM FLOOR TO CEILING: APPROX. 9';
 EXCEPT KITCHEN & BATHROOM APPROX. 8'



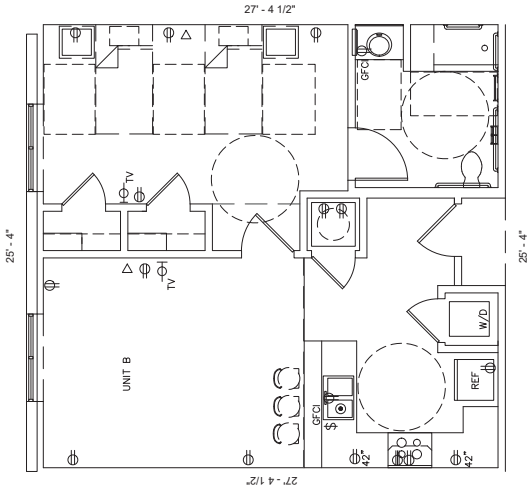
UNIT B (144) - ONE BEDROOM (WITH 2 SINGLE BEDS)

SCALE: 1/4"=1'-0"
 NET SF: (694 SF)
 HEIGHT FROM FLOOR TO CEILING: APPROX. 9';
 EXCEPT KITCHEN & BATHROOM APPROX. 8'



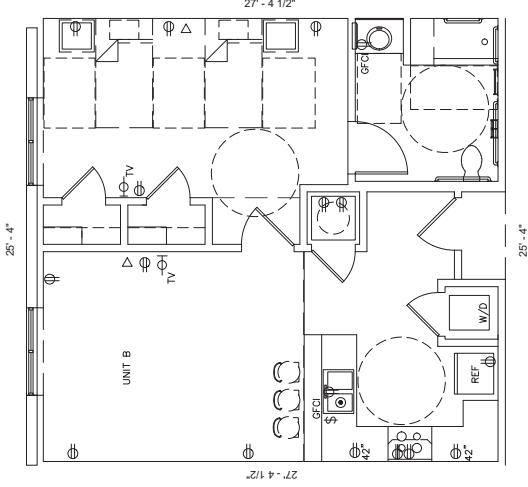
UNIT B (146) - ONE BEDROOM (WITH 2 SINGLE BEDS)

SCALE: 1/4"=1'-0"
 NET SF: (694 SF)
 HEIGHT FROM FLOOR TO CEILING: APPROX. 9';
 EXCEPT KITCHEN & BATHROOM APPROX. 8'



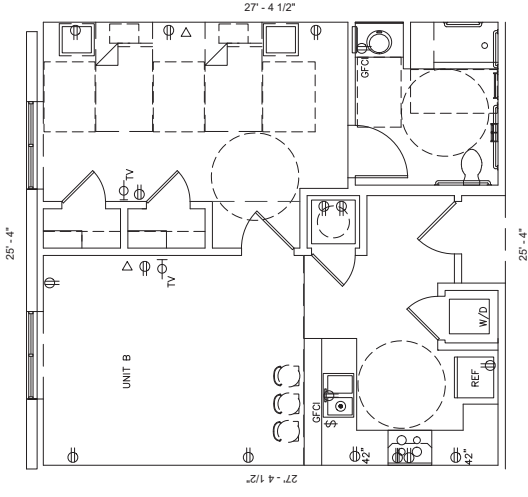
UNIT B (149) - ONE BEDROOM (WITH 2 SINGLE BEDS)

SCALE: 1/4"=1'-0"
 NET SF: (694 SF)
 HEIGHT FROM FLOOR TO CEILING: APPROX. 9';
 EXCEPT KITCHEN & BATHROOM APPROX. 8'



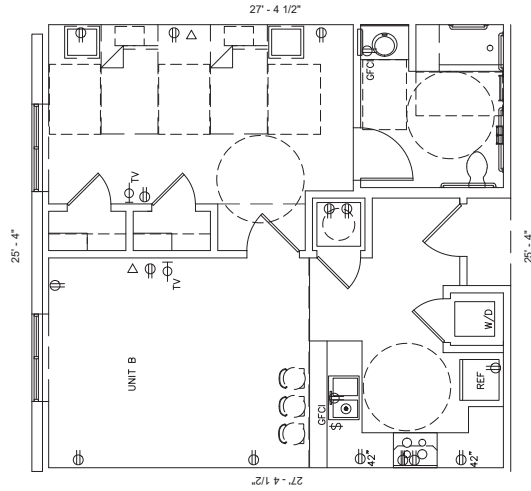
UNIT B (151) - ONE BEDROOM (WITH 2 SINGLE BEDS)

SCALE: 1/4"=1'-0"
 NET SF: (694 SF)
 HEIGHT FROM FLOOR TO CEILING: APPROX. 9';
 EXCEPT KITCHEN & BATHROOM APPROX. 8'



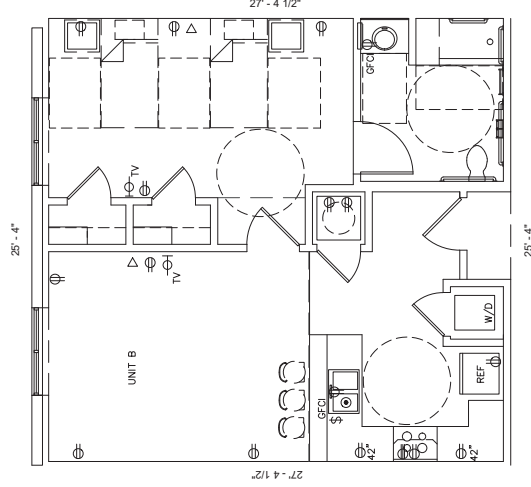
UNIT B (233) - ONE BEDROOM (WITH 2 SINGLE BEDS)

SCALE: 1/4"=1'-0"
 NET SF: (694 SF)
 HEIGHT FROM FLOOR TO CEILING: APPROX. 9';
 EXCEPT KITCHEN & BATHROOM APPROX. 8'



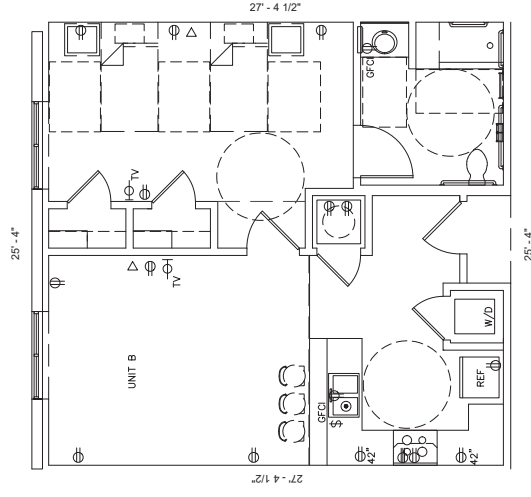
UNIT B (235) - ONE BEDROOM (WITH 2 SINGLE BEDS)

SCALE: 1/4"=1'-0"
 NET SF: (694 SF)
 HEIGHT FROM FLOOR TO CEILING: APPROX. 9';
 EXCEPT KITCHEN & BATHROOM APPROX. 8'



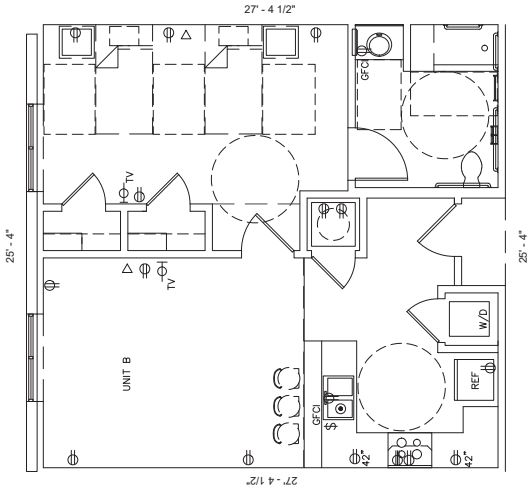
UNIT B (242) - ONE BEDROOM (WITH 2 SINGLE BEDS)

SCALE: 1/4"=1'-0"
 NET SF: (694 SF)
 HEIGHT FROM FLOOR TO CEILING: APPROX. 9';
 EXCEPT KITCHEN & BATHROOM APPROX. 8'



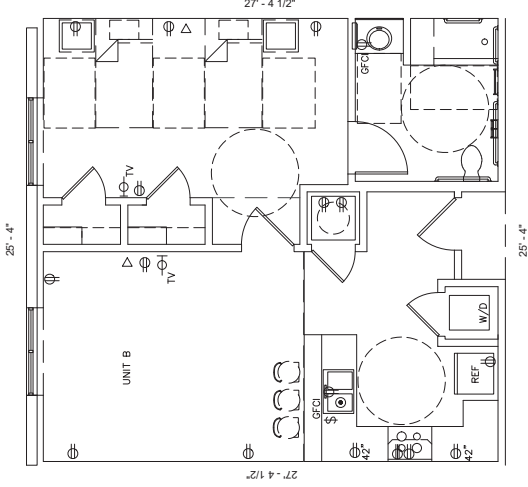
UNIT B (244) - ONE BEDROOM (WITH 2 SINGLE BEDS)

SCALE: 1/4"=1'-0"
 NET SF: (694 SF)
 HEIGHT FROM FLOOR TO CEILING: APPROX. 9';
 EXCEPT KITCHEN & BATHROOM APPROX. 8'



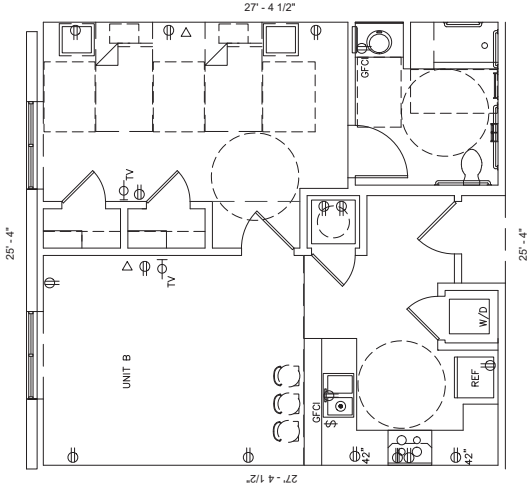
UNIT B (333) - ONE BEDROOM (WITH 2 SINGLE BEDS)

SCALE: 1/4"=1'-0"
 NET SF: (694 SF)
 HEIGHT FROM FLOOR TO CEILING: APPROX. 9';
 EXCEPT KITCHEN & BATHROOM APPROX. 8'



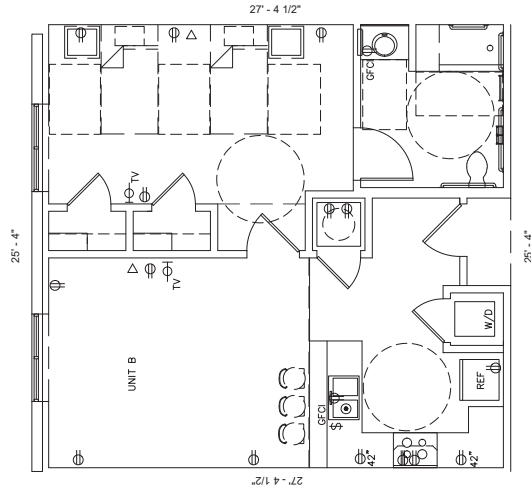
UNIT B (335) - ONE BEDROOM (WITH 2 SINGLE BEDS)

SCALE: 1/4"=1'-0"
 NET SF: (694 SF)
 HEIGHT FROM FLOOR TO CEILING: APPROX. 9';
 EXCEPT KITCHEN & BATHROOM APPROX. 8'



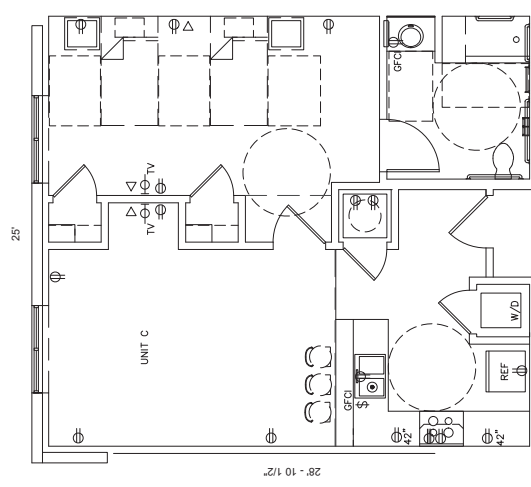
UNIT B (342) - ONE BEDROOM (WITH 2 SINGLE BEDS)

SCALE: 1/4"=1'-0"
 NET SF: (694 SF)
 HEIGHT FROM FLOOR TO CEILING: APPROX. 9';
 EXCEPT KITCHEN & BATHROOM APPROX. 8'



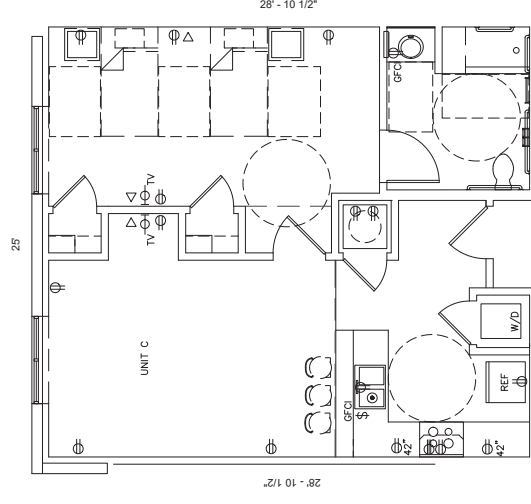
UNIT B (344) - ONE BEDROOM (WITH 2 SINGLE BEDS)

SCALE: 1/4"=1'-0"
 NET SF: (694 SF)
 HEIGHT FROM FLOOR TO CEILING: APPROX. 9';
 EXCEPT KITCHEN & BATHROOM APPROX. 8'



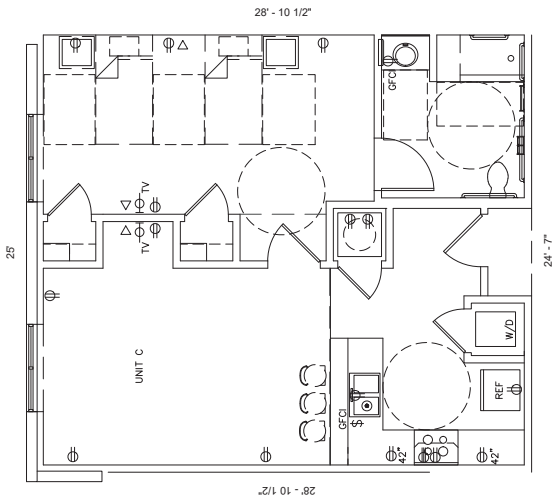
UNIT C (137) - ONE BEDROOM (WITH 2 SINGLE BEDS)

SCALE: 1/4"=1'-0"
 NET SF: (714 SF)
 HEIGHT FROM FLOOR TO CEILING: APPROX. 9';
 EXCEPT KITCHEN & BATHROOM APPROX. 8'



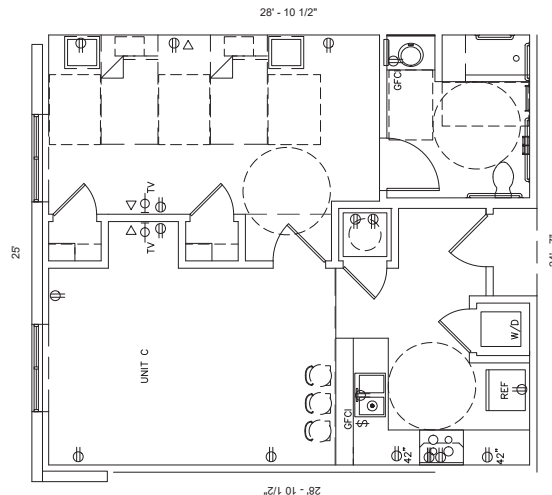
UNIT C (139) - ONE BEDROOM (WITH 2 SINGLE BEDS)

SCALE: 1/4"=1'-0"
 NET SF: (714 SF)
 HEIGHT FROM FLOOR TO CEILING: APPROX. 9';
 EXCEPT KITCHEN & BATHROOM APPROX. 8'



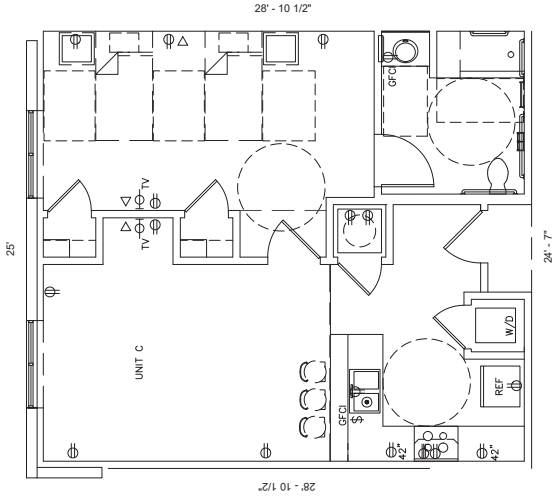
UNIT C (228) - ONE BEDROOM (WITH 2 SINGLE BEDS)

SCALE: 1/4"=1'-0"
 NET SF: (714 SF)
 HEIGHT FROM FLOOR TO CEILING: APPROX. 9';
 EXCEPT KITCHEN & BATHROOM APPROX. 8'



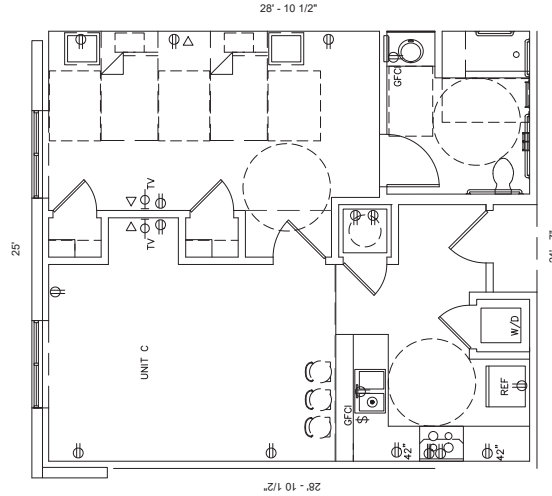
UNIT C (328) - ONE BEDROOM (WITH 2 SINGLE BEDS)

SCALE: 1/4"=1'-0"
 NET SF: (714 SF)
 HEIGHT FROM FLOOR TO CEILING: APPROX. 9';
 EXCEPT KITCHEN & BATHROOM APPROX. 8'



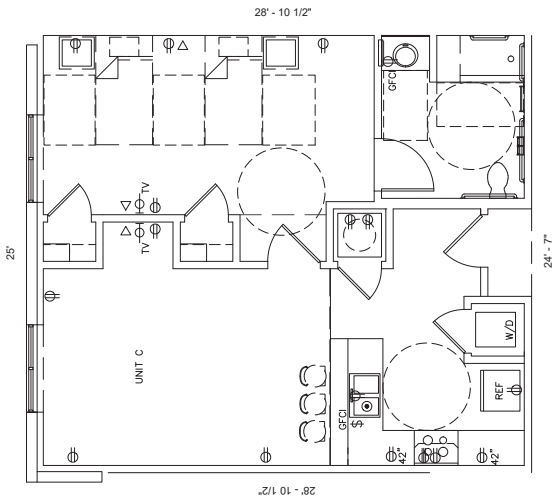
UNIT C (226) - ONE BEDROOM (WITH 2 SINGLE BEDS)

SCALE: 1/4"=1'-0"
 NET SF: (714 SF)
 HEIGHT FROM FLOOR TO CEILING: APPROX. 9';
 EXCEPT KITCHEN & BATHROOM APPROX. 8'



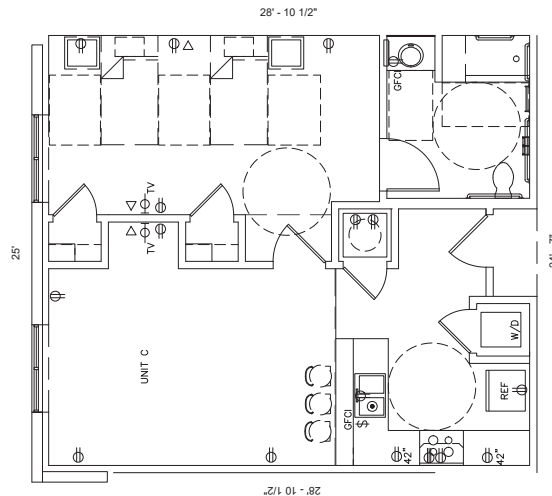
UNIT C (326) - ONE BEDROOM (WITH 2 SINGLE BEDS)

SCALE: 1/4"=1'-0"
 NET SF: (714 SF)
 HEIGHT FROM FLOOR TO CEILING: APPROX. 9';
 EXCEPT KITCHEN & BATHROOM APPROX. 8'



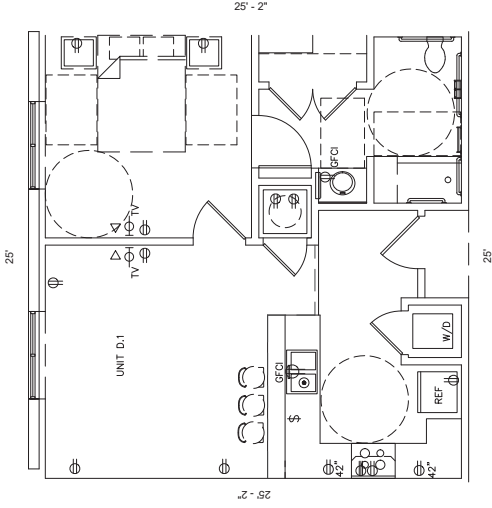
UNIT C (155) - ONE BEDROOM (WITH 2 SINGLE BEDS)

SCALE: 1/4"=1'-0"
 NET SF: (714 SF)
 HEIGHT FROM FLOOR TO CEILING: APPROX. 9';
 EXCEPT KITCHEN & BATHROOM APPROX. 8'



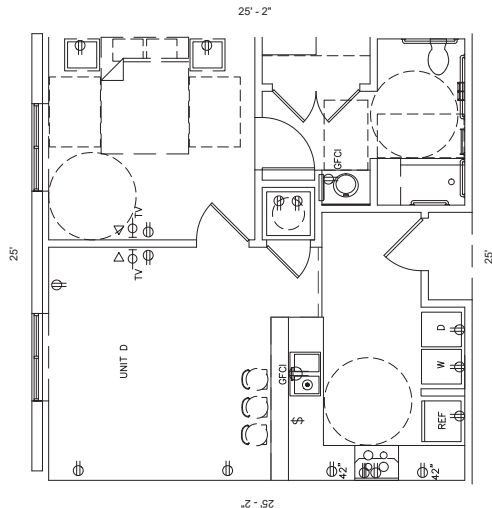
UNIT C (248) - ONE BEDROOM (WITH 2 SINGLE BEDS)

SCALE: 1/4"=1'-0"
 NET SF: (714 SF)
 HEIGHT FROM FLOOR TO CEILING: APPROX. 9';
 EXCEPT KITCHEN & BATHROOM APPROX. 8'



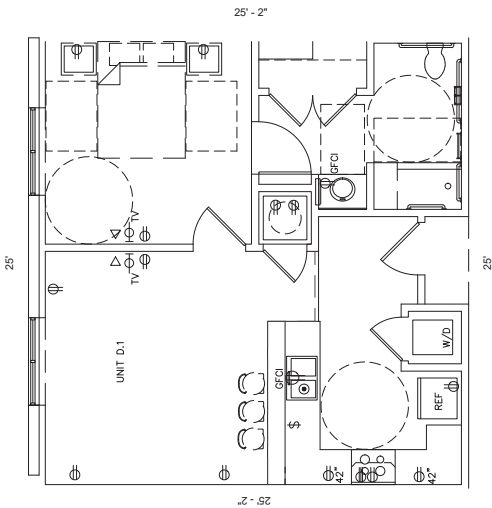
UNIT D.1 (156) - ONE BEDROOM

SCALE: 1/4"=1'-0"
 NET SF: (643 SF)
 HEIGHT FROM FLOOR TO CEILING: APPROX. 9';
 EXCEPT KITCHEN & BATHROOM APPROX. 8'



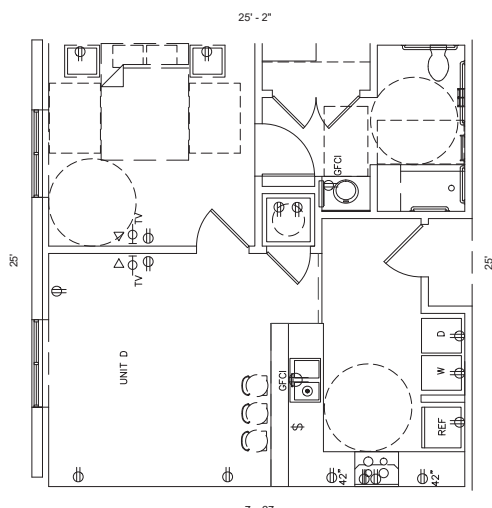
UNIT D (329) - ONE BEDROOM

SCALE: 1/4"=1'-0"
 NET SF: (637 SF)
 HEIGHT FROM FLOOR TO CEILING: APPROX. 9';
 EXCEPT KITCHEN & BATHROOM APPROX. 8'



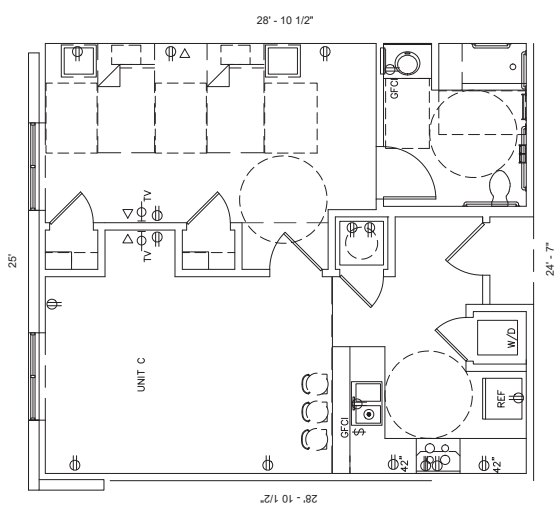
UNIT D.1 (136) - ONE BEDROOM

SCALE: 1/4"=1'-0"
 NET SF: (643 SF)
 HEIGHT FROM FLOOR TO CEILING: APPROX. 9';
 EXCEPT KITCHEN & BATHROOM APPROX. 8'



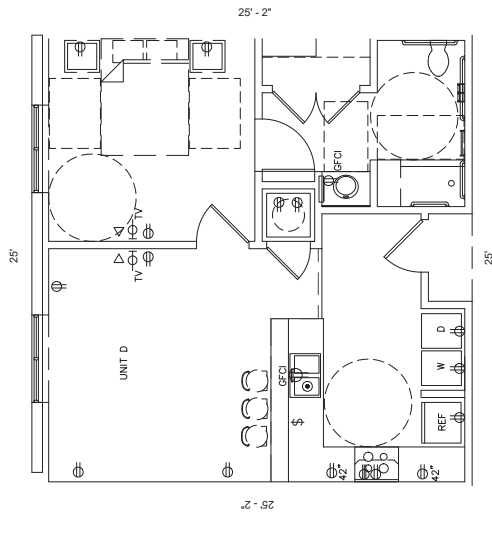
UNIT D (229) - ONE BEDROOM

SCALE: 1/4"=1'-0"
 NET SF: (637 SF)
 HEIGHT FROM FLOOR TO CEILING: APPROX. 9';
 EXCEPT KITCHEN & BATHROOM APPROX. 8'



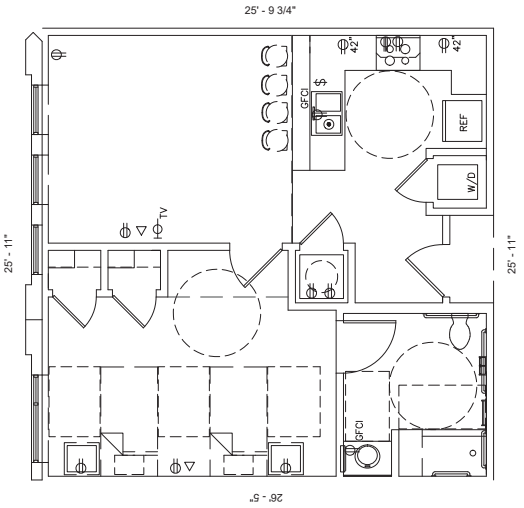
UNIT C (348) - ONE BEDROOM (WITH 2 SINGLE BEDS)

SCALE: 1/4"=1'-0"
 NET SF: (714 SF)
 HEIGHT FROM FLOOR TO CEILING: APPROX. 9';
 EXCEPT KITCHEN & BATHROOM APPROX. 8'



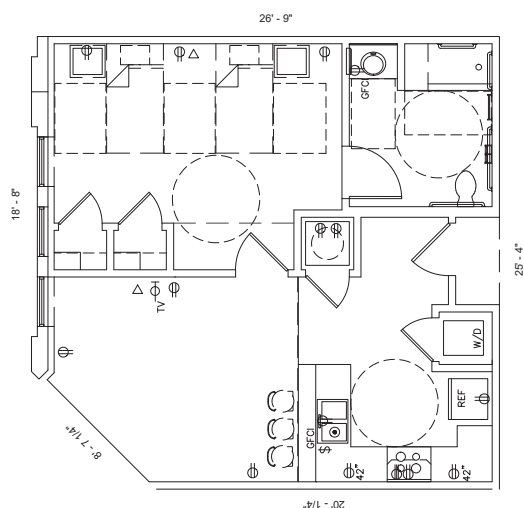
UNIT D (140) - ONE BEDROOM

SCALE: 1/4"=1'-0"
 NET SF: (637 SF)
 HEIGHT FROM FLOOR TO CEILING: APPROX. 9';
 EXCEPT KITCHEN & BATHROOM APPROX. 8'



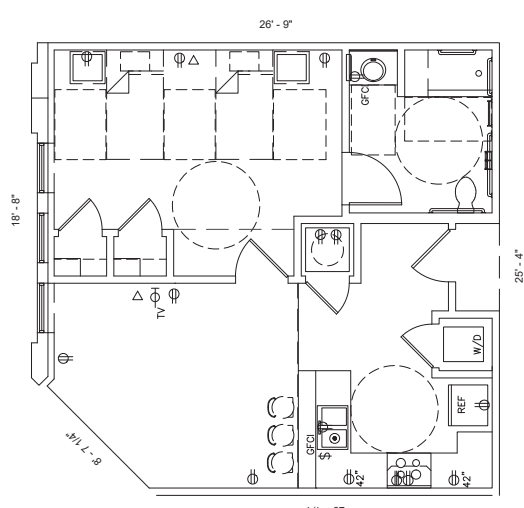
UNIT F (223) - ONE BEDROOM (WITH 2 SINGLE BEDS)

SCALE: 1/4"=1'-0"
 NET SF: (678 SF)
 HEIGHT FROM FLOOR TO CEILING: APPROX. 9';
 EXCEPT KITCHEN & BATHROOM APPROX. 8'



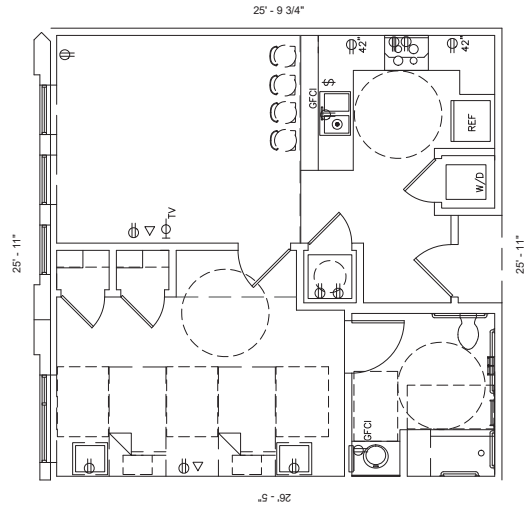
UNIT E (135) - ONE BEDROOM (WITH 2 SINGLE BEDS)

SCALE: 1/4"=1'-0"
 NET SF: (656 SF)
 HEIGHT FROM FLOOR TO CEILING: APPROX. 9';
 EXCEPT KITCHEN & BATHROOM APPROX. 8'



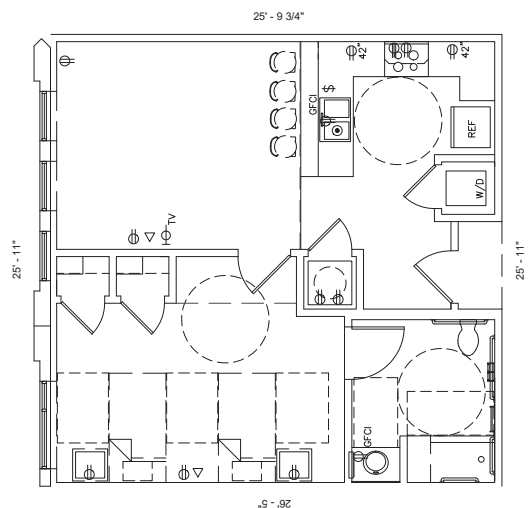
UNIT E (134) - ONE BEDROOM (WITH 2 SINGLE BEDS)

SCALE: 1/4"=1'-0"
 NET SF: (656 SF)
 HEIGHT FROM FLOOR TO CEILING: APPROX. 9';
 EXCEPT KITCHEN & BATHROOM APPROX. 8'



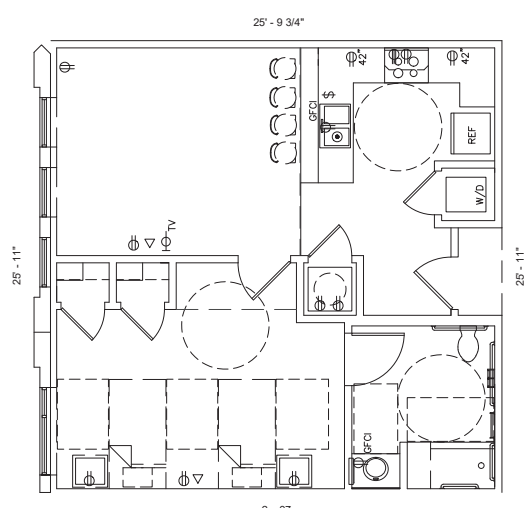
UNIT F (324) - ONE BEDROOM (WITH 2 SINGLE BEDS)

SCALE: 1/4"=1'-0"
 NET SF: (678 SF)
 HEIGHT FROM FLOOR TO CEILING: APPROX. 9';
 EXCEPT KITCHEN & BATHROOM APPROX. 8'



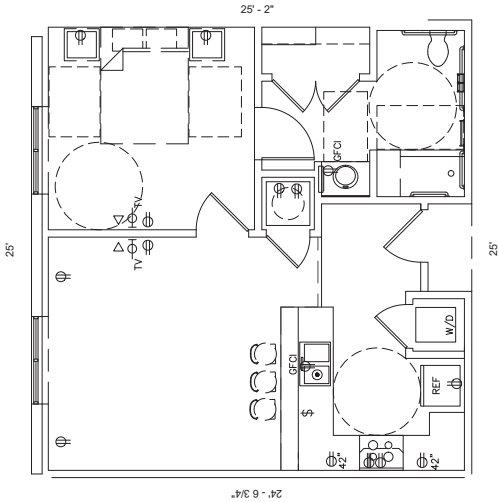
UNIT F (323) - ONE BEDROOM (WITH 2 SINGLE BEDS)

SCALE: 1/4"=1'-0"
 NET SF: (678 SF)
 HEIGHT FROM FLOOR TO CEILING: APPROX. 9';
 EXCEPT KITCHEN & BATHROOM APPROX. 8'

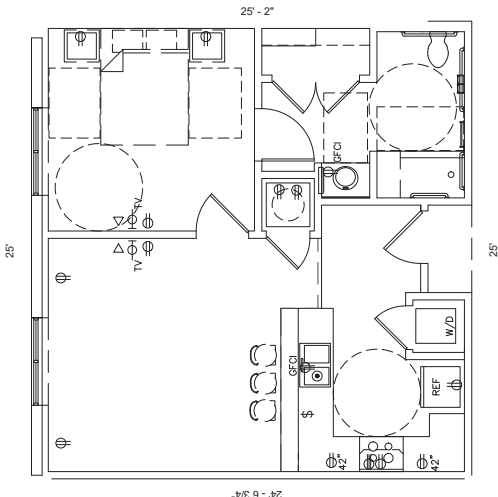


UNIT F (224) - ONE BEDROOM (WITH 2 SINGLE BEDS)

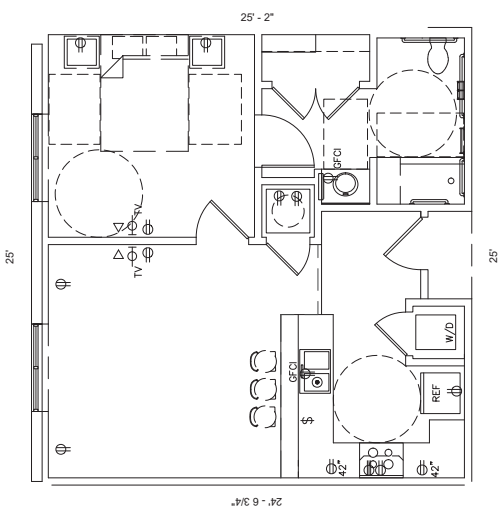
SCALE: 1/4"=1'-0"
 NET SF: (678 SF)
 HEIGHT FROM FLOOR TO CEILING: APPROX. 9';
 EXCEPT KITCHEN & BATHROOM APPROX. 8'



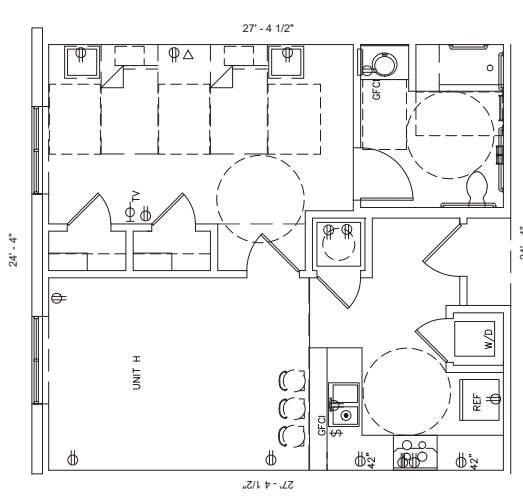
UNIT G (325) - ONE BEDROOM
 SCALE: 1/4"=1'-0"
 NET SF: (642 SF)
 HEIGHT FROM FLOOR TO CEILING: APPROX. 9';
 EXCEPT KITCHEN & BATHROOM APPROX. 8'



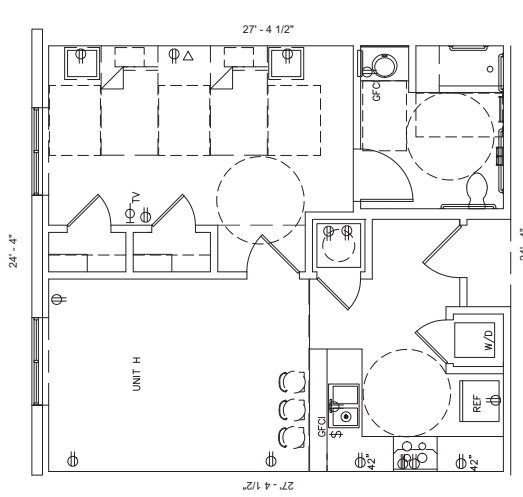
UNIT G (249) - ONE BEDROOM
 SCALE: 1/4"=1'-0"
 NET SF: (642 SF)
 HEIGHT FROM FLOOR TO CEILING: APPROX. 9';
 EXCEPT KITCHEN & BATHROOM APPROX. 8'



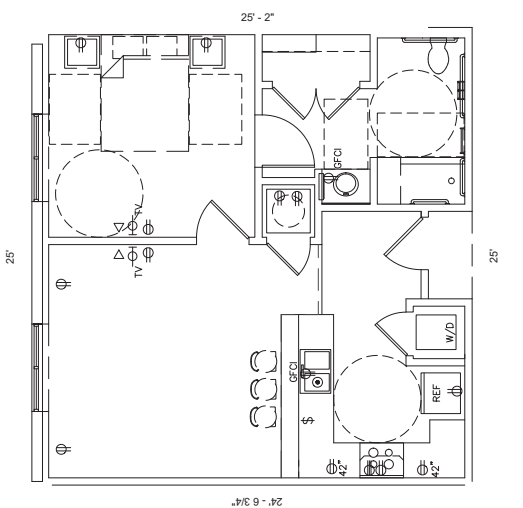
UNIT G (225) - ONE BEDROOM
 SCALE: 1/4"=1'-0"
 NET SF: (642 SF)
 HEIGHT FROM FLOOR TO CEILING: APPROX. 9';
 EXCEPT KITCHEN & BATHROOM APPROX. 8'



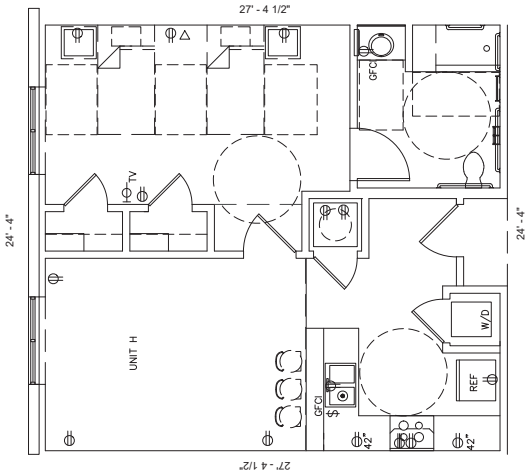
UNIT H (152) - ONE BEDROOM (WITH 2 SINGLE BEDS)
 SCALE: 1/4"=1'-0"
 NET SF: (686 SF)
 HEIGHT FROM FLOOR TO CEILING: APPROX. 9';
 EXCEPT KITCHEN & BATHROOM APPROX. 8'



UNIT H (142) - ONE BEDROOM (WITH 2 SINGLE BEDS)
 SCALE: 1/4"=1'-0"
 NET SF: (686 SF)
 HEIGHT FROM FLOOR TO CEILING: APPROX. 9';
 EXCEPT KITCHEN & BATHROOM APPROX. 8'

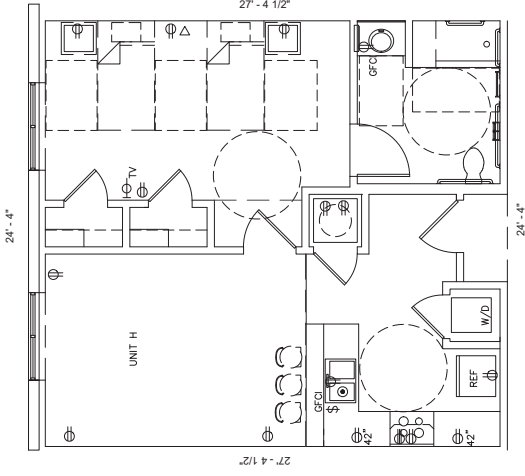


UNIT G (349) - ONE BEDROOM
 SCALE: 1/4"=1'-0"
 NET SF: (642 SF)
 HEIGHT FROM FLOOR TO CEILING: APPROX. 9';
 EXCEPT KITCHEN & BATHROOM APPROX. 8'



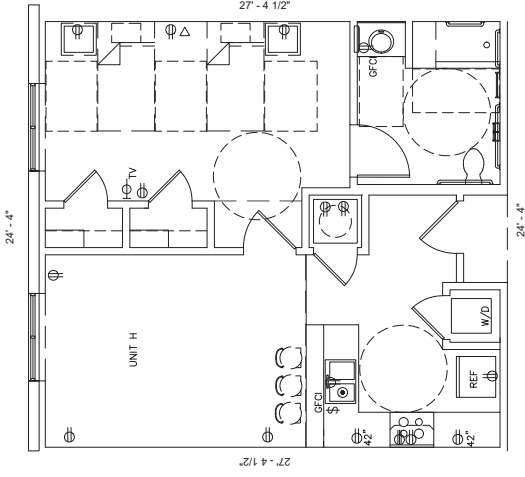
UNIT H (231) - ONE BEDROOM (WITH 2 SINGLE BEDS)

SCALE: 1/4"=1'-0"
 NET SF: (686 SF)
 HEIGHT FROM FLOOR TO CEILING: APPROX. 9';
 EXCEPT KITCHEN & BATHROOM APPROX. 8'



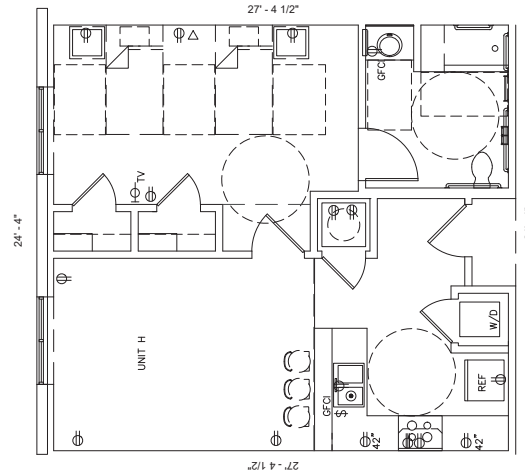
UNIT H (245) - ONE BEDROOM (WITH 2 SINGLE BEDS)

SCALE: 1/4"=1'-0"
 NET SF: (686 SF)
 HEIGHT FROM FLOOR TO CEILING: APPROX. 9';
 EXCEPT KITCHEN & BATHROOM APPROX. 8'



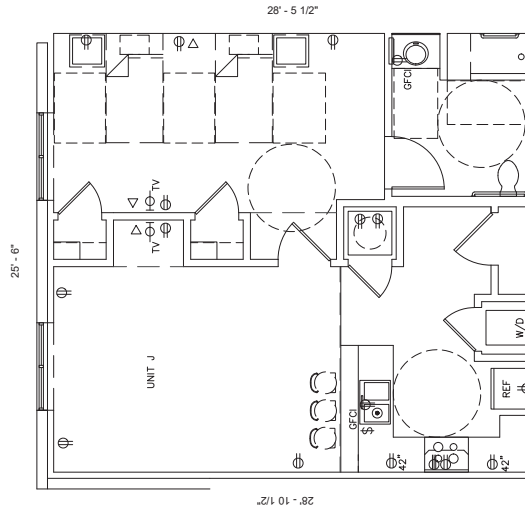
UNIT H (331) - ONE BEDROOM (WITH 2 SINGLE BEDS)

SCALE: 1/4"=1'-0"
 NET SF: (686 SF)
 HEIGHT FROM FLOOR TO CEILING: APPROX. 9';
 EXCEPT KITCHEN & BATHROOM APPROX. 8'



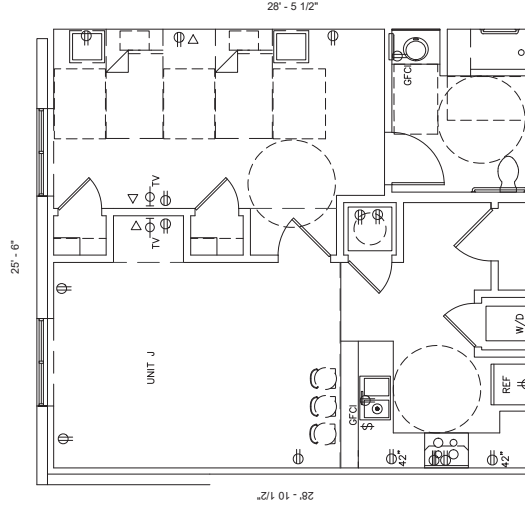
UNIT H (345) - ONE BEDROOM (WITH 2 SINGLE BEDS)

SCALE: 1/4"=1'-0"
 NET SF: (686 SF)
 HEIGHT FROM FLOOR TO CEILING: APPROX. 9';
 EXCEPT KITCHEN & BATHROOM APPROX. 8'



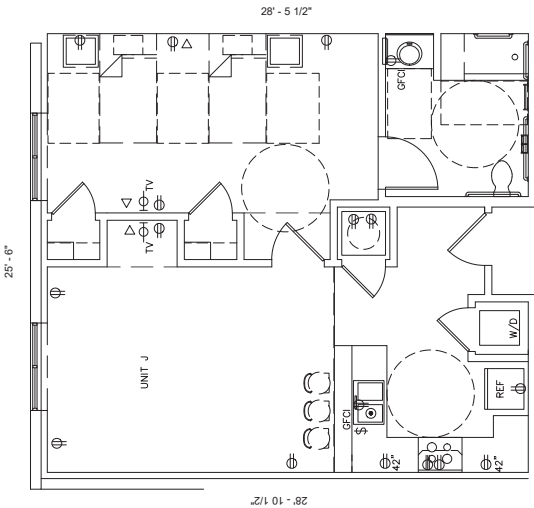
UNIT J (153) - ONE BEDROOM (WITH 2 SINGLE BEDS)

SCALE: 1/4"=1'-0"
 NET SF: (748 SF)
 HEIGHT FROM FLOOR TO CEILING: APPROX. 9';
 EXCEPT KITCHEN & BATHROOM APPROX. 8'



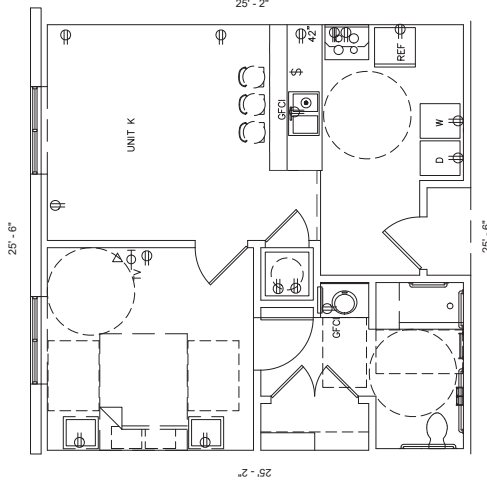
UNIT J (246) - ONE BEDROOM (WITH 2 SINGLE BEDS)

SCALE: 1/4"=1'-0"
 NET SF: (748 SF)
 HEIGHT FROM FLOOR TO CEILING: APPROX. 9';
 EXCEPT KITCHEN & BATHROOM APPROX. 8'



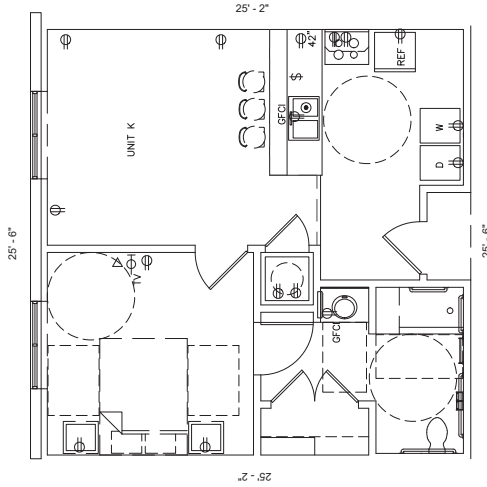
UNIT J (346) - ONE BEDROOM (WITH 2 SINGLE BEDS)

SCALE: 1/4"=1'-0"
 NET SF: (748 SF)
 HEIGHT FROM FLOOR TO CEILING: APPROX. 9';
 EXCEPT KITCHEN & BATHROOM APPROX. 8'



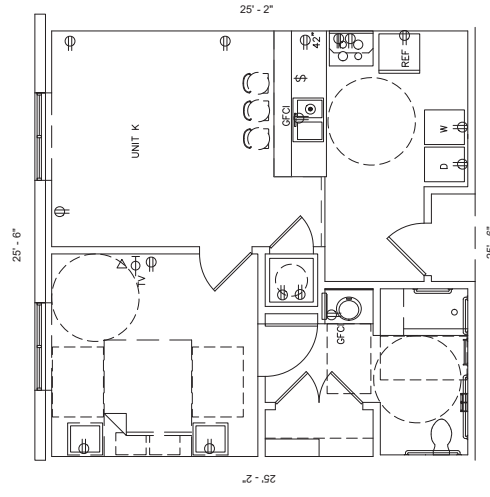
UNIT K (141) - ONE BEDROOM

SCALE: 1/4"=1'-0"
 NET SF: (631 SF)
 HEIGHT FROM FLOOR TO CEILING: APPROX. 9';
 EXCEPT KITCHEN & BATHROOM APPROX. 8'



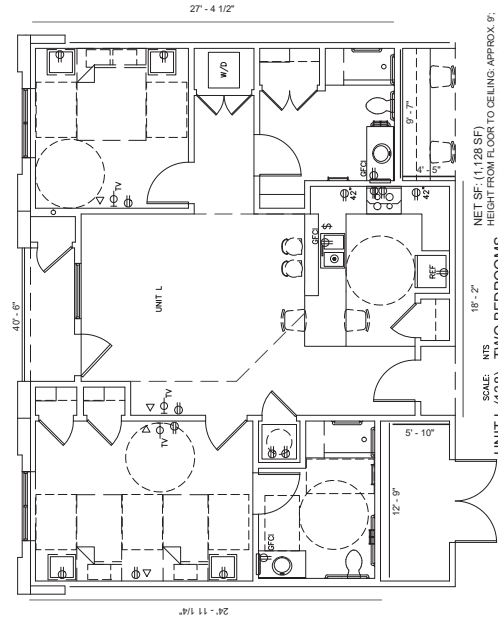
UNIT K (230) - ONE BEDROOM

SCALE: 1/4"=1'-0"
 NET SF: (631 SF)
 HEIGHT FROM FLOOR TO CEILING: APPROX. 9';
 EXCEPT KITCHEN & BATHROOM APPROX. 8'



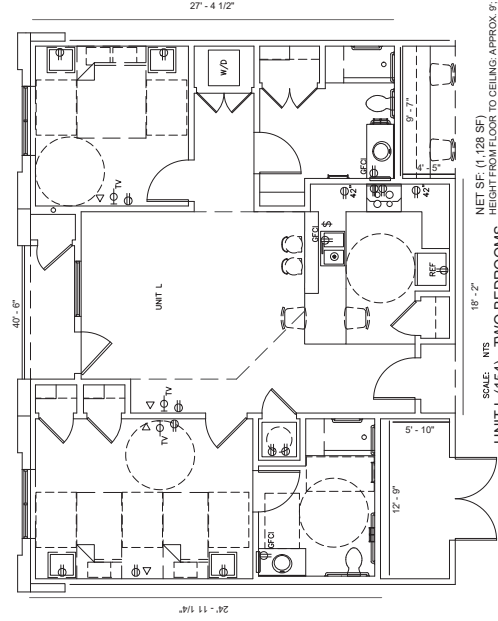
UNIT K (330) - ONE BEDROOM

SCALE: 1/4"=1'-0"
 NET SF: (631 SF)
 HEIGHT FROM FLOOR TO CEILING: APPROX. 9';
 EXCEPT KITCHEN & BATHROOM APPROX. 8'



UNIT L (138) - TWO BEDROOMS

SCALE: NTS 18'-2"
 NET SF: (1,128 SF)
 HEIGHT FROM FLOOR TO CEILING: APPROX. 9';
 EXCEPT KITCHEN & BATHROOM APPROX. 8'



UNIT L (154) - TWO BEDROOMS

SCALE: NTS 18'-2"
 NET SF: (1,128 SF)
 HEIGHT FROM FLOOR TO CEILING: APPROX. 9';
 EXCEPT KITCHEN & BATHROOM APPROX. 8'

