

Union Walk Apartments

ASKING PRICE
\$16,500,000



UNITS: 57

ADDRESS: 144 25th ST, Ogden UT

NO. OF BUILDINGS: 1

SUMMARY: You can't get a better location than this one! Located right on Ogden's historic 25th ST, this project is within walking distance of Union station, the Frontrunner Station, City Hall, Lindquist Field, countless retail & restaurant options, and many professional office plazas. Located in an IRS Opportunity Zone.

UNIT MIX:

**13 Studio : 19 1 Bed : 23 2 Bed :
2 Commercial**

Summa Terra Ventures
79 W 900 N, Suite B
Springville, UT 84663
www.summaterraventures.com

Mike Watson
CEO
801-636-0100
mike@summaterraventures.com

Porter Christensen
President of Operations
801-989-2890
porter@summaterraventures.com



RENDERINGS



Summa Terra Ventures
79 W 900 N, Suite B
Springville, UT 84663
www.summaterraventures.com

Mike Watson
CEO
801-636-0100
mike@summaterraventures.com

Porter Christensen
President of Operations
801-989-2890
porter@summaterraventures.com



ELEVATION



Summa Terra Ventures
79 W 900 N, Suite B
Springville, UT 84663
www.summaterraventures.com

Mike Watson
CEO
801-636-0100
mike@summaterraventures.com

Porter Christensen
President of Operations
801-989-2890
porter@summaterraventures.com



FLOOR PLANS



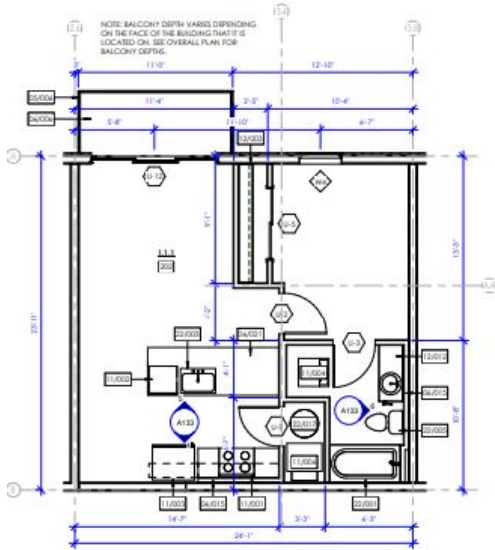
Summa Terra Ventures
 79 W 900 N, Suite B
 Springville, UT 84663
www.summaterraventures.com

Mike Watson
 CEO
 801-636-0100
mike@summaterraventures.com

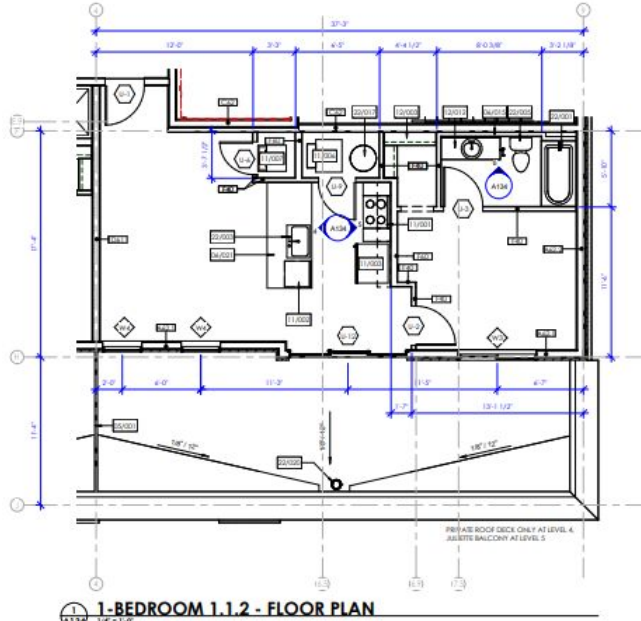
Porter Christensen
 President of Operations
 801-989-2890
porter@summaterraventures.com



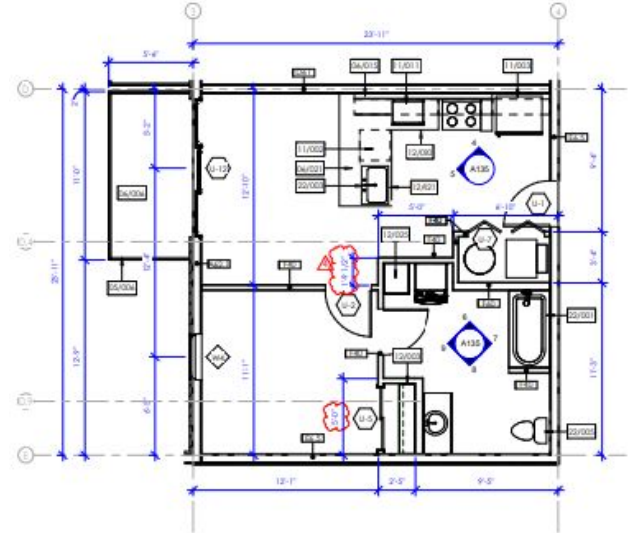
UNIT PLANS - ONE BEDROOM



1-BEDROOM 1.1.1 - FLOOR PLAN
1/4" = 1'-0"



1-BEDROOM 1.1.2 - FLOOR PLAN
1/4" = 1'-0"



1-BEDROOM 1.1.3 TYPE A - FLOOR PLAN
1/4" = 1'-0"

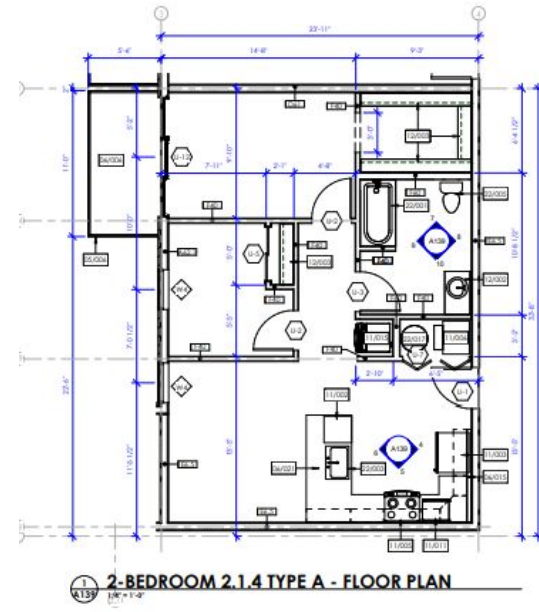
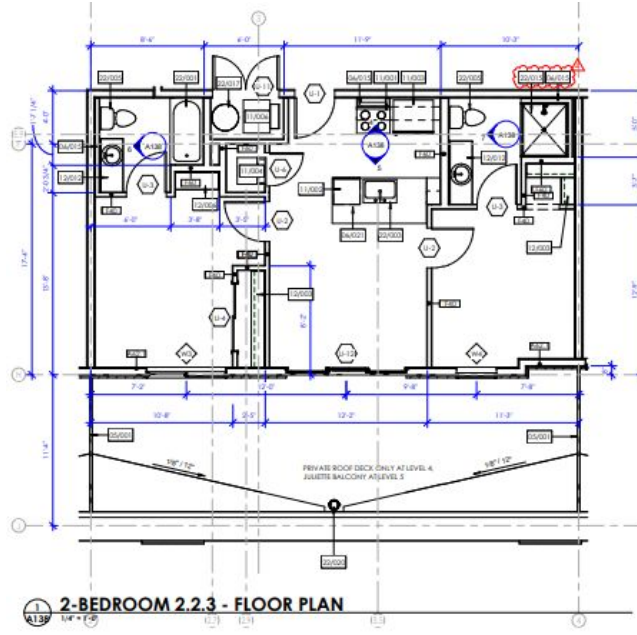
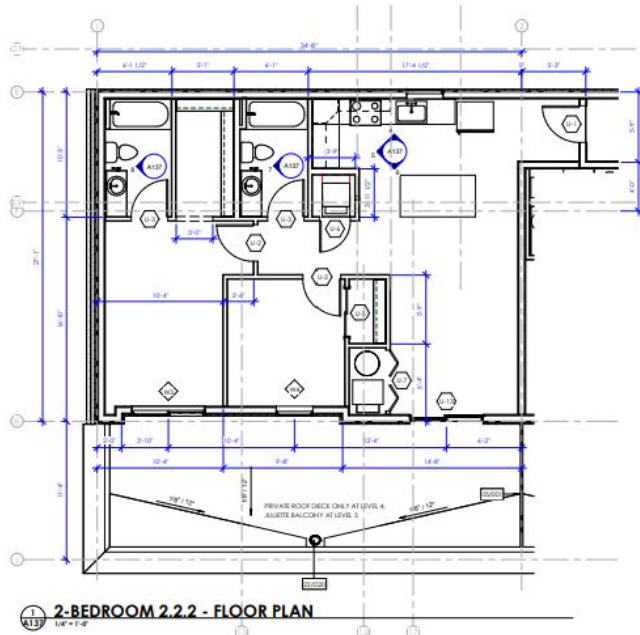
Summa Terra Ventures
79 W 900 N, Suite B
Springville, UT 84663
www.summaterraventures.com

Mike Watson
CEO
801-636-0100
mike@summaterraventures.com

Porter Christensen
President of Operations
801-989-2890
porter@summaterraventures.com



UNIT PLANS - TWO BEDROOM



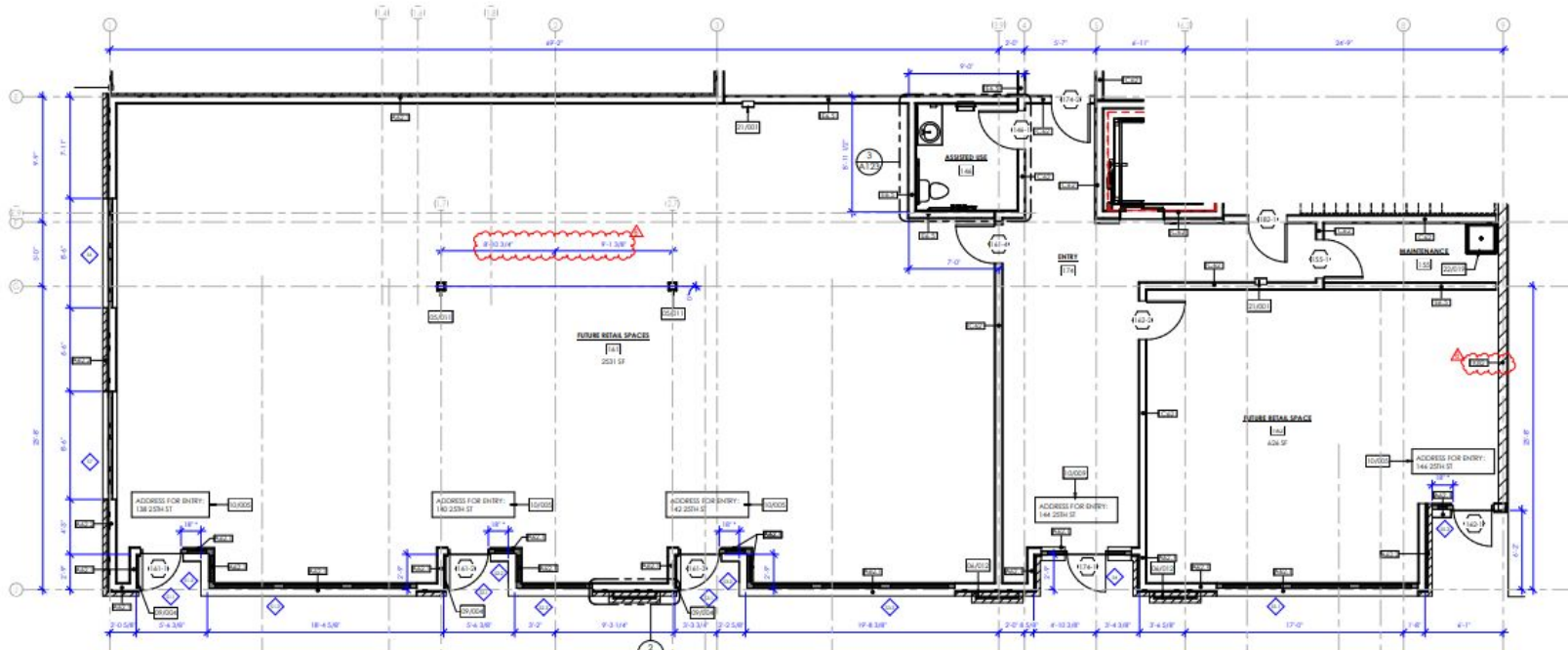
Summa Terra Ventures
 79 W 900 N, Suite B
 Springville, UT 84663
www.summaterraventures.com

Mike Watson
 CEO
 801-636-0100
mike@summaterraventures.com

Porter Christensen
 President of Operations
 801-989-2890
porter@summaterraventures.com



UNIT PLANS - COMMERCIAL SPACE



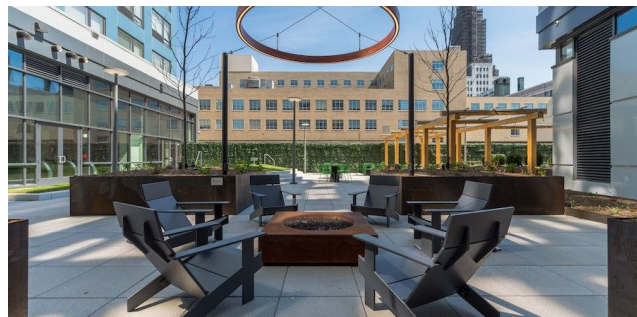
Summa Terra Ventures
 79 W 900 N, Suite B
 Springville, UT 84663
www.summaterraventures.com

Mike Watson
 CEO
 801-636-0100
mike@summaterraventures.com

Porter Christensen
 President of Operations
 801-989-2890
porter@summaterraventures.com



AMENITIES – Gym, Firepit, BBQ Area, and Clubhouse



Summa Terra Ventures
79 W 900 N, Suite B
Springville, UT 84663
www.summaterraventures.com

Mike Watson
CEO
801-636-0100
mike@summaterraventures.com

Porter Christensen
President of Operations
801-989-2890
porter@summaterraventures.com



PHOTOS



Summa Terra Ventures
79 W 900 N, Suite B
Springville, UT 84663
www.summaterraventures.com

Mike Watson
CEO
mike@summaterraventures.com

Porter Christensen
Vice President of Operations
801-989-2890
porter@summaterraventures.com



PHOTOS



Summa Terra Ventures
79 W 900 N, Suite B
Springville, UT 84663
www.summaterraventures.com

Mike Watson
CEO
mike@summaterraventures.com

Porter Christensen
Vice President of Operations
801-989-2890
porter@summaterraventures.com



PHOTOS



Summa Terra Ventures
79 W 900 N, Suite B
Springville, UT 84663
www.summaterraventures.com

Mike Watson
CEO
mike@summaterraventures.com

Porter Christensen
Vice President of Operations
801-989-2890
porter@summaterraventures.com

