

FOR LEASE

NORTH BANK PLAZA RETAIL SPACE

2950 JOHNSON DRIVE, VENTURA, CALIFORNIA

Retail 24/7.



FEATURES:

- Newly renovated center
- 35,194 SF center (not including former theater space)
- \$1.75 PSF + \$.70 NNN
- Space available: 400 SF up to 4,555 SF
- Adjacent to Riverpark

FOR MORE
INFORMATION
PLEASE
CONTACT

David Rush
Lic. 01058118
Senior Vice President
+1 805 288 4680
david.rush@cbre.com

CBRE
www.cbre.com/ventura

CBRE

FOR LEASE

NORTH BANK PLAZA RETAIL SPACE

Retail 24/7.

2950 JOHNSON DRIVE, VENTURA, CALIFORNIA

AERIAL



FOR MORE
INFORMATION
PLEASE
CONTACT

David Rush

Lic. 01058118

Senior Vice President

+1 805 288 4680

david.rush@cbre.com

CBRE

CBRE, Inc. | 2761 Park View Court | Oxnard, CA 93036 | www.cbre.com/ventura

www.cbre.com/ventura

© 2014 CBRE, Inc. This information has been obtained from sources believed reliable. We have not verified it and make no guarantee, warranty or representation about it. Any projections, opinions, assumptions or estimates used are for example only and do not represent the current or future performance of the property. You and your advisors should conduct a careful, independent investigation of the property to determine to your satisfaction the suitability of the property for your needs. CBRE and the CBRE logo are service marks of CBRE, Inc. and/or its affiliated or related companies in the United States and other countries. All other marks displayed on this document are the property of their respective owners.

FOR LEASE

NORTH BANK PLAZA RETAIL SPACE

Retail 24/7.

2950 JOHNSON DRIVE, VENTURA, CALIFORNIA

AERIAL



FOR MORE
INFORMATION
PLEASE
CONTACT

David Rush

Lic. 01058118

Senior Vice President

+1 805 288.4680

david.rush@cbre.com

CBRE

CBRE, Inc. | 2761 Park View Court | Oxnard, CA 93036 | www.cbre.com/ventura

© 2014 CBRE, Inc. This information has been obtained from sources believed reliable. We have not verified it and make no guarantee, warranty or representation about it. Any projections, opinions, assumptions or estimates used are for example only and do not represent the current or future performance of the property. You and your advisors should conduct a careful, independent investigation of the property to determine to your satisfaction the suitability of the property for your needs. CBRE and the CBRE logo are service marks of CBRE, Inc. and/or its affiliated or related companies in the United States and other countries. All other marks displayed on this document are the property of their respective owners.

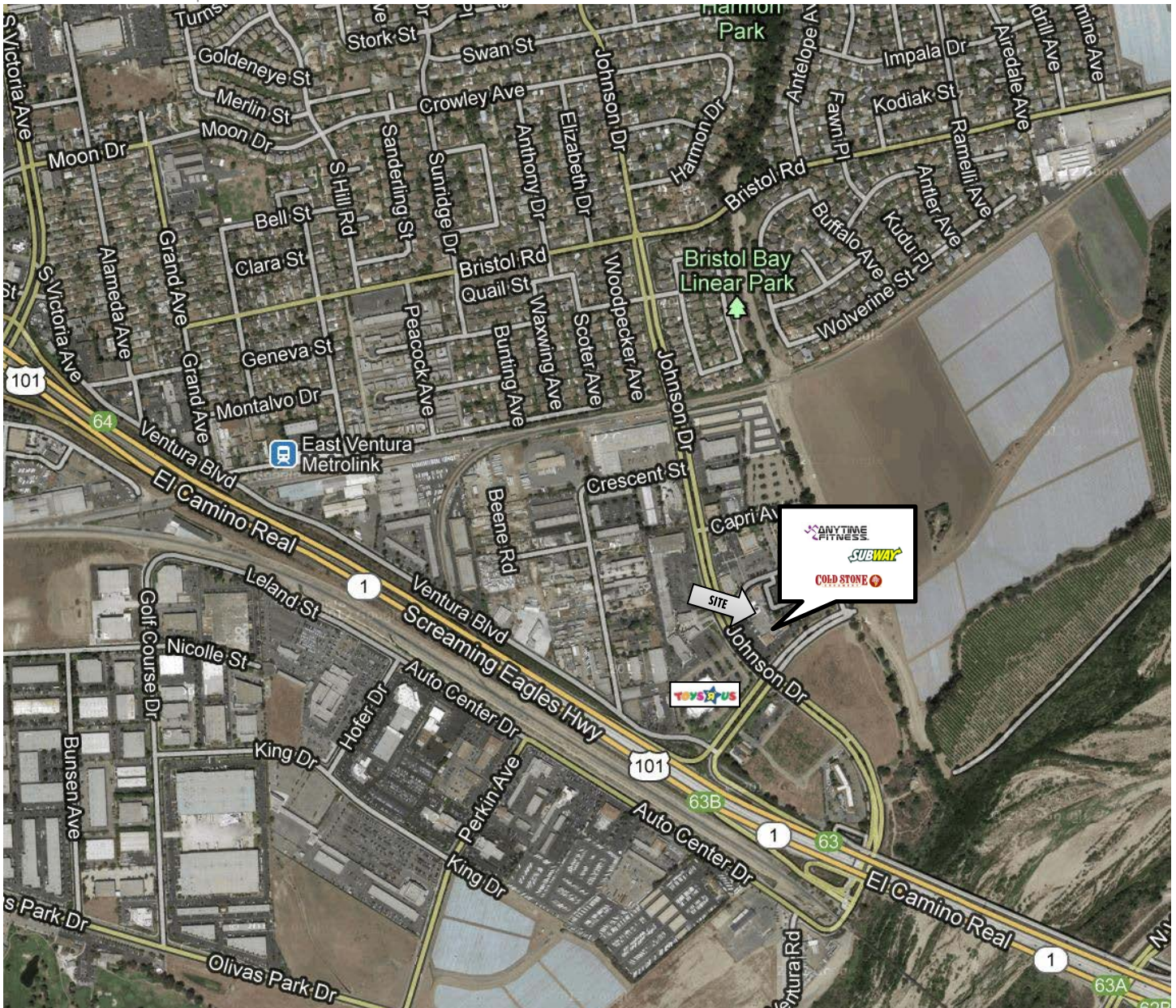
www.cbre.com/ventura

FOR LEASE

NORTH BANK PLAZA RETAIL SPACE

Retail 24/7.

2950 JOHNSON DRIVE, VENTURA, CALIFORNIA



FOR MORE
INFORMATION
PLEASE
CONTACT

David Rush

Lic. 01058118

Senior Vice President

+1 805 288 4680

david.rush@cbre.com

CBRE

CBRE, Inc. | 2761 Park View Court | Oxnard, CA 93036 | www.cbre.com/ventura

www.cbre.com/ventura

© 2014 CBRE, Inc. This information has been obtained from sources believed reliable. We have not verified it and make no guarantee, warranty or representation about it. Any projections, opinions, assumptions or estimates used are for example only and do not represent the current or future performance of the property. You and your advisors should conduct a careful, independent investigation of the property to determine to your satisfaction the suitability of the property for your needs. CBRE and the CBRE logo are service marks of CBRE, Inc. and/or its affiliated or related companies in the United States and other countries. All other marks displayed on this document are the property of their respective owners.

FOR LEASE

NORTH BANK PLAZA

RETAIL SPACE

2950 JOHNSON DRIVE, VENTURA, CALIFORNIA

Retail **24/7.**



| Suite | Tenant | SF |
|-------|------------------------|------------------------|
| 101 | FMP Uniforms | 1,970 |
| 103 | Trade Express Magazine | 2,350 |
| 107 | Anytime Fitness | 8,476 |
| 108 | Sprint | 1,558 |
| 109 | AVAILABLE | 1,102 |
| 111 | Salon D' Mar | 1,390 |
| 112 | Beauty Supply Center | 1,430 |
| 113 | Journey Home | 1,430 |
| 114 | Century Nails | 825 |
| 115 | Coldstone Creamery | 1,170 |
| 116 | Enterprise Car Rental | 990 |
| 117 | Northbank Liquors | 917 |
| 118 | AVAILABLE | 1,007 (food ok) |

| Suite | Tenant | SF |
|------------------|------------------------------|---------------|
| 119 | Missy's Cupcakes | 1,010 |
| 121-123 | TOKI Ramen | 1,190 |
| 125 | TOKI Ramen | 1,251 |
| 127 | AVAILABLE | 1,104 |
| 128 | Ventura Hobbies | 1,137 |
| 129 | Sri Thai To Go | 842 |
| 130 | AVAILABLE | 910 |
| 131A | El Taco Café | 355 |
| 131B | Hook, Line & Sinker, Seafood | 240 |
| 132 | AVAILABLE | 400 |
| 133 | Just BBQ | 820 |
| 134 | Fortune Cooky | 651 |
| Total GLA | | 35,194 |

FOR MORE
INFORMATION
PLEASE
CONTACT

David Rush
Lic. 01058118
Senior Vice President
+1 805 288 4680
david.rush@cbre.com

CBRE, Inc. | 2761 Park View Court | Oxnard, CA 93036 | www.cbre.com/ventura

© 2014 CBRE, Inc. This information has been obtained from sources believed reliable. We have not verified it and make no guarantee, warranty or representation about it. Any projections, opinions, assumptions or estimates used are for example only and do not represent the current or future performance of the property. You and your advisors should conduct a careful, independent investigation of the property to determine to your satisfaction the suitability of the property for your needs. CBRE and the CBRE logo are service marks of CBRE, Inc. and/or its affiliated or related companies in the United States and other countries. All other marks displayed on this document are the property of their respective owners.

CBRE

www.cbre.com/ventura

FOR LEASE

NORTH BANK PLAZA RETAIL SPACE

Retail **24/7.**

2950 JOHNSON DRIVE, VENTURA, CALIFORNIA

| | 1 Mile | 3 Miles | 5 Miles |
|--------------------------------------|-------------|--------------|--------------|
| POPULATION | | | |
| 2016 Population | 8,735 | 121,765 | 248,883 |
| 2021 Population | 9,087 | 127,549 | 259,569 |
| 2010 Population | 8,277 | 114,962 | 237,234 |
| 2000 Population | 7,985 | 97,266 | 209,166 |
| Percent Pop Change: 2010 to 2016 | 5.5% | 5.9% | 4.9% |
| Percent Pop Change: 2016 to 2021 | 4.0% | 4.8% | 4.3% |
| AGE | | | |
| 2016 Median Age | 36.8 | 35.5 | 35.1 |
| 2016 Average Age | 37.8 | 37.2 | 36.8 |
| HOUSEHOLDS | | | |
| 2016 Households | 2,980 | 38,563 | 76,919 |
| 2021 Households | 3,138 | 40,465 | 80,358 |
| 2010 Households | 2,750 | 36,519 | 73,465 |
| 2000 Households | 2,629 | 32,235 | 66,308 |
| Percent HH Change: 2010 to 2016 | 8.4% | 5.6% | 4.7% |
| Percent HH Change: 2016 to 2021 | 5.3% | 4.9% | 4.5% |
| Average Household Size | 3.1 | 3.1 | 3.2 |
| INCOME | | | |
| 2016 Median Household Income | \$86,673 | \$74,209 | \$69,083 |
| 2016 Average Household Income | \$103,572 | \$92,033 | \$88,148 |
| 2016 Per Capita Income | \$35,339 | \$29,147 | \$27,243 |
| HOUSING UNITS | | | |
| 2016 Housing Units | 3,080 | 40,209 | 81,227 |
| 2016 Occupied Housing Units | 2,980 | 38,563 | 76,919 |
| 2016 Vacant Housing Units | 100 | 1,646 | 4,308 |
| 2016 Owner-Occupied Housing Units | 1,907 | 23,216 | 43,981 |
| 2016 Renter-Occupied Housing Units | 1,074 | 15,347 | 32,938 |
| EDUCATION | | | |
| 2016 Population Age 25 and Over | 5,805 | 79,374 | 160,833 |
| High School thru Associates | 3,263 56.2% | 44,193 55.7% | 86,339 53.7% |
| Bachelor's Degree | 1,152 19.8% | 13,528 17.0% | 24,610 15.3% |
| Graduate Degree | 605 10.4% | 7,416 9.3% | 13,823 8.6% |
| PLACE OF WORK | | | |
| Total Businesses | 670 | 6,149 | 12,094 |
| Daytime Employment (Total Employees) | 6,113 | 59,672 | 119,863 |