

### 3.04.N. BUSINESS PARK (BP)

#### 3.04.N. BUSINESS PARK (BP)

##### PURPOSE

The Business Park District is intended primarily for the location of high-quality office, office showrooms, light fabrication, and research and development uses. Limited retail and personal service businesses are appropriate in a supporting capacity. The Business Park District should be sited along transportation thoroughfares that can accommodate the increased traffic demands created by these areas. They should include high quality building design in an integrated or campus-like setting.

##### EXAMPLE BUILDING TYPE



##### INTENSITY AND DIMENSIONAL STANDARDS

Minimum Lot Area (ac)	0.5
Minimum Lot Width (ft)	100
Maximum Residential Density (units/ac)	n/a
Maximum Floor Area Ratio (FAR)	2
Maximum Height (ft)	80
Minimum Front Yard Depth (ft)	15
Minimum Side Yard Depth (ft)	20 / 35 <sup>1</sup>
Minimum Rear Yard Depth (ft)	20 / 35 <sup>1</sup>

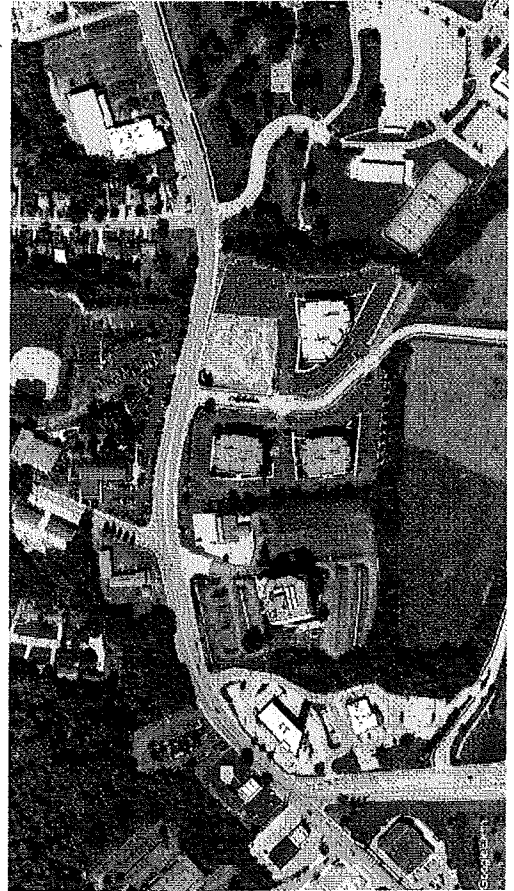
##### CROSS REFERENCES

Permitted and Conditional Uses	Article 4
Dimensional Requirements	Article 5
Development Standards	Article 7
Natural Resource and Environmental Standards	Article 8
Parking and Loading Standards	Article 10
Signs	Article 11

##### NOTES

<sup>1</sup> When abutting a residential district.

##### EXAMPLE LOT PATTERN



##### EXAMPLE DEVELOPMENT CONFIGURATION

3.04.N. BUSINESS PARK (BP)

