

# Office/Warehouse | For Lease

11842-B S 33rd W Ave | Sapulpa, OK 74107

**WIGGIN**  
PROPERTIES, LLC



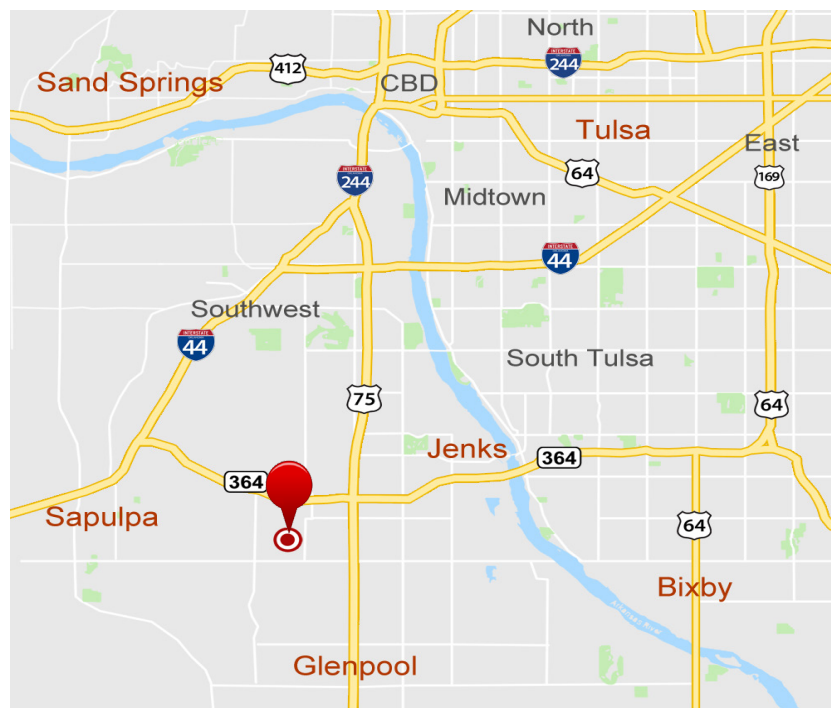
## Available Space

±10,000 SF

±3,000 SF Office

## Property Features

- Reception Area, (3) Offices, (3) Restrooms, and (1) Conference Room
- 3-Phase Power
- Partially Climate Controlled
- Partially Fenced; Shared Yard
- 16.5' Clear Height
- Zoned C2
- Built in 1996
- Ample Parking



**John Watchous**

Advisor

918.991.8519

[jwatchous@wigginprop.com](mailto:jwatchous@wigginprop.com)

**Shawna Hale, CCIM**

Advisor

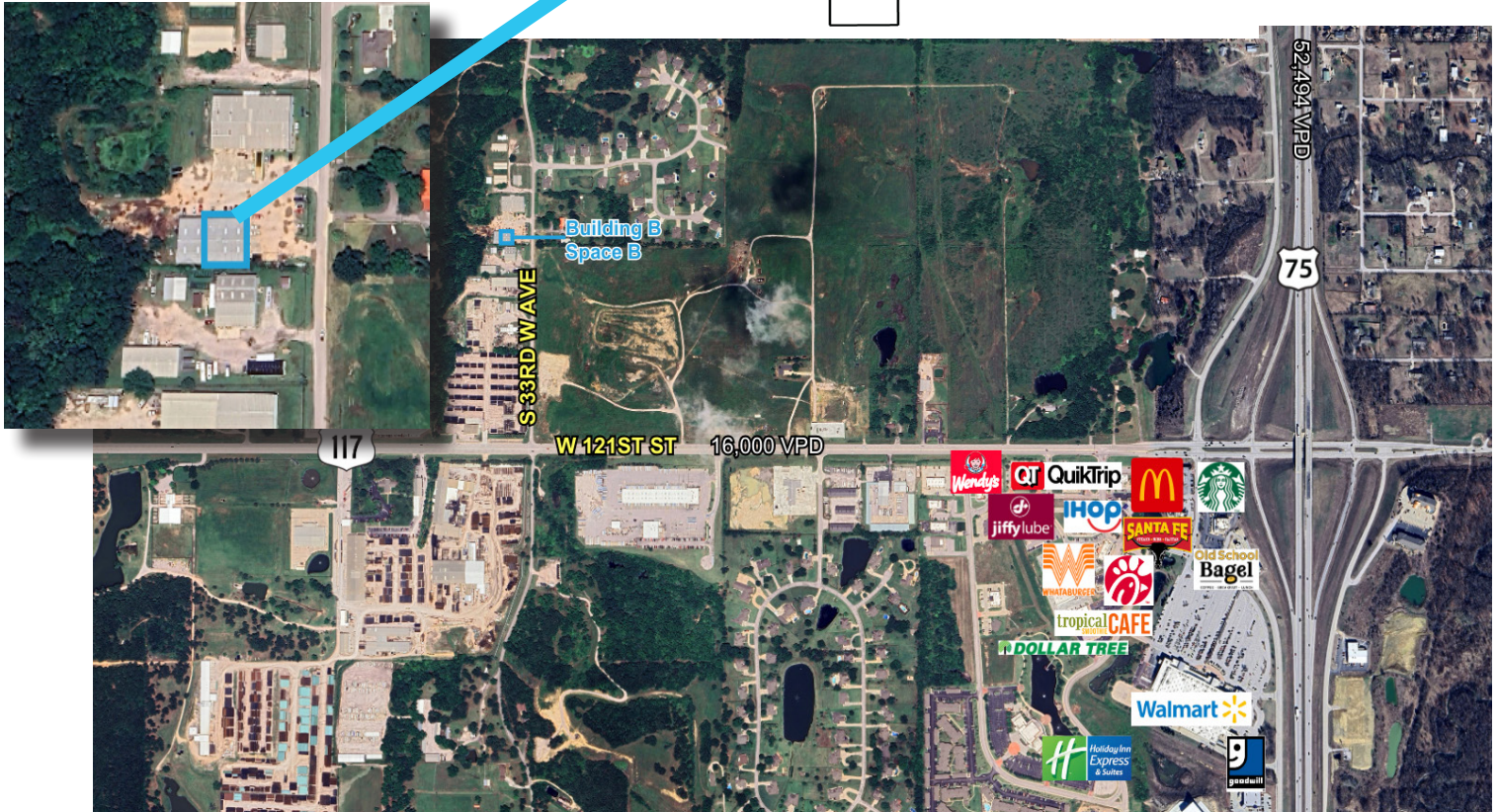
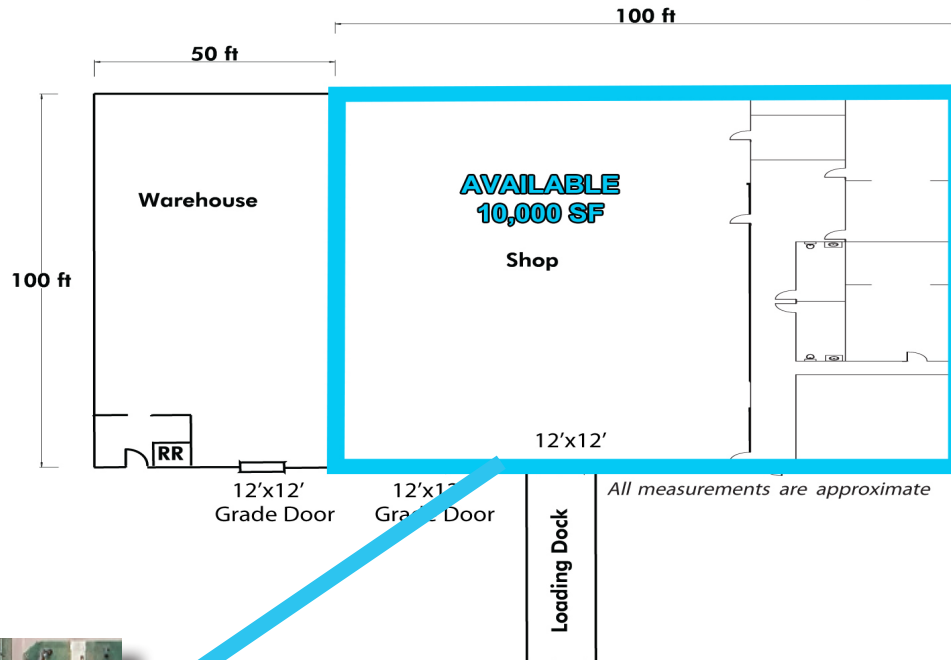
918.282.8664

[shale@wigginprop.com](mailto:shale@wigginprop.com)

# Office/Warehouse | For Lease

11842-B S 33rd W Ave | Sapulpa, OK 74107

# WIGGIN PROPERTIES, LLC



**John Watchous**

Advisor

918.991.8519

[jwatchous@wigginprop.com](mailto:jwatchous@wigginprop.com)

**Shawna Hale, CCIM**

Advisor

918.282.8664

[shale@wigginprop.com](mailto:shale@wigginprop.com)