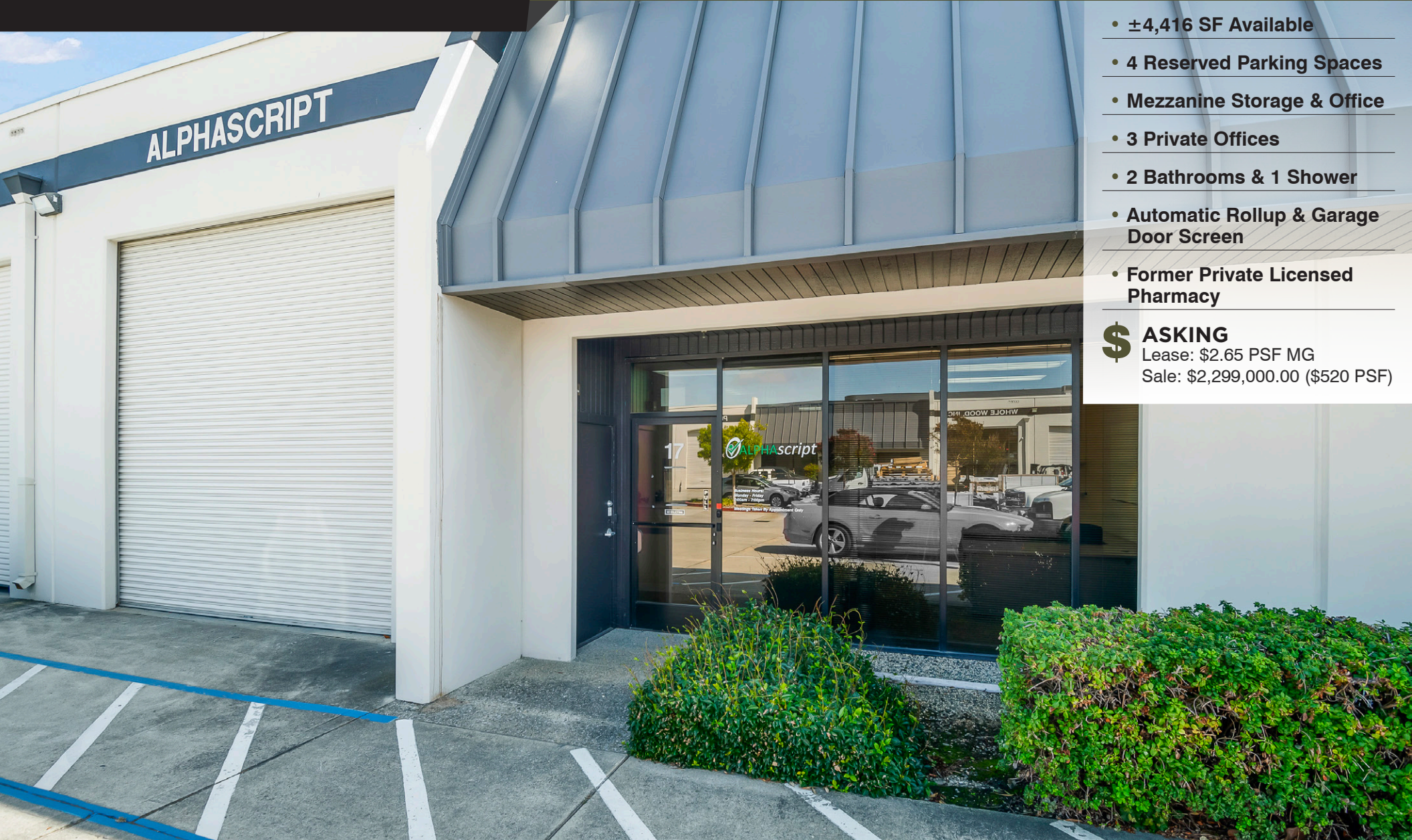


1160 Industrial Road, #17

SAN CARLOS, CA 94070

±4,416 SF R&D/INDUSTRIAL CONDO FOR SALE & LEASE



- ±4,416 SF Available
- 4 Reserved Parking Spaces
- Mezzanine Storage & Office
- 3 Private Offices
- 2 Bathrooms & 1 Shower
- Automatic Rollup & Garage Door Screen
- Former Private Licensed Pharmacy

\$ ASKING

Lease: \$2.65 PSF MG

Sale: \$2,299,000.00 (\$520 PSF)



1629 Main Street
Redwood City, CA 94063
www.srscre.com

Anthony Kamm
Principal, Commercial Division
650.888.3858
ak@seq-rs.com
CAL DRE LIC NO. 01783456



1350 Old Bayshore Highway
Suite 900
Burlingame, CA 94010
www.cushmanwakefield.com

Ben Paul
Vice Chairman/Market Lead
650.867.9639
ben.paul@cushwake.com
CAL DRE LIC NO. 01210872

PROPERTY PHOTOS

1160 INDUSTRIAL ROAD #17, SAN CARLOS



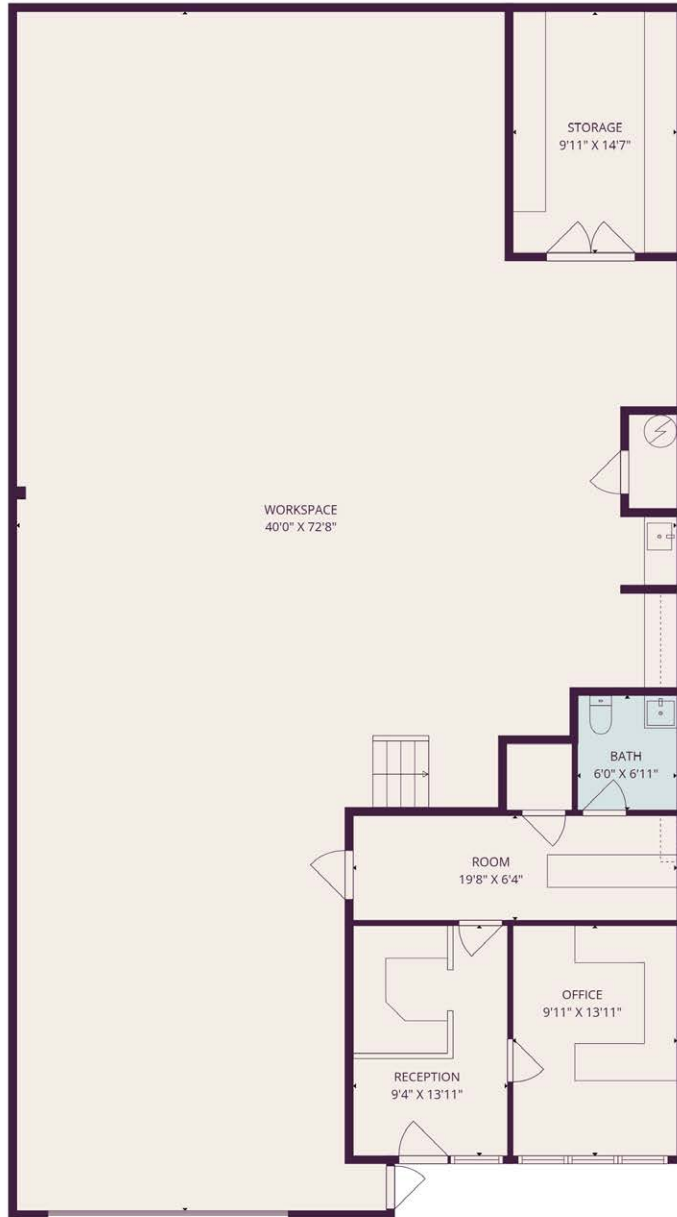
Anthony Kamm 650.888.3858 | ak@seq-rs.com



Ben Paul 650.867.9639 | ben.paul@cushwake.com

FLOOR PLAN

1160 INDUSTRIAL ROAD #17, SAN CARLOS



FLOOR 1



FLOOR 2



Anthony Kamm 650.888.3858 | ak@seq-rs.com



Ben Paul 650.867.9639 | ben.paul@cushwake.com

LOCAL AMENITIES

1160 INDUSTRIAL ROAD #17, SAN CARLOS



Anthony Kamm 650.888.3858 | ak@seq-rs.com






Ben Paul 650.867.9639 | ben.paul@cushwake.com

SAN CARLOS DEVELOPMENT PLAN

1160 INDUSTRIAL ROAD #17, SAN CARLOS



-  COMMERCIAL
-  RESIDENTIAL
-  LIGHT INDUSTRIAL
-  SAN CARLOS STATION
-  SAN CARLOS AIRPORT
-  DOWNTOWN



Anthony Kamm 650.888.3858 | ak@seq-rs.com



Ben Paul 650.867.9639 | ben.paul@cushwake.com