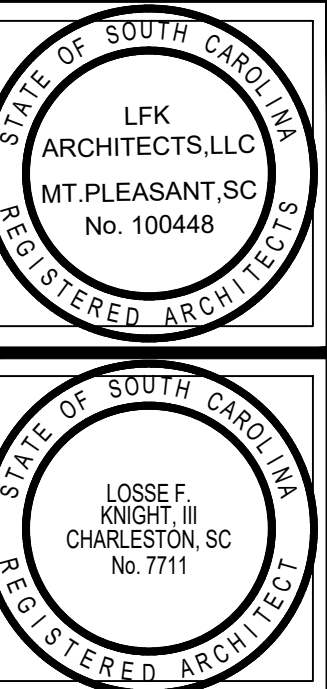


FLOOR PLAN NOTES:

1. DIMENSIONS:  
INTERIOR WALL DIMENSIONS ARE FROM FACE OF FINISH WALL TO FACE OF FINISH WALL.  
EXTERIOR WALLS ARE DIMENSIONED TO EXTERIOR FACE OF FINISH STOREFRONT DIMENSIONED TO OUTSIDE FACE OF FINISHED FRAME (SEE SCHEDULE)
2. SEE A005 FOR WALL TYPES & NOTES.
3. FINISH FLOOR ELEVATION TO BE MIN. 4" ABOVE ADJACENT GRADE, SEE CIVIL AND ARCH. SITE PLAN FOR SPOT ELEVATIONS
4. FINISH FLOOR ELEVATION TO BE MIN 3" ABOVE ADJACENT SIDEWALKS, SEE CIVIL, EXCEPT AT ENTRY LANDINGS.
5. REFER TO CIVIL/LANDSCAPE DRAWINGS FOR ADDITIONAL SPECIFICATIONS ON DRIVES, SIDEWALKS AND SITE GRADING.
6. REFER TO STRUCTURAL DRAWINGS FOR ADDITIONAL SPECIFICATIONS ON CONCRETE SLAB, STUDS, ROOF TRUSSES
7. REFERENCE ELECTRICAL, MECHANICAL AND PLUMBING SHEETS FOR SYSTEM LOCATIONS & DETAILS.
8. SEE STRUCTURAL DWGS FOR FINAL CONCRETE SLAB CONTROL JOINTS.
9. SEE CODE REVIEW SHEET A001 FOR ADDITIONAL CODE REQUIREMENTS AND LIFE SAFETY PLAN AND ELECTRICAL FOR ADDITIONAL REQUIREMENTS, SUCH AS EXIT LIGHTS AND EMERGENCY LIGHT REQ.S.
10. PROVIDE TERMITE TREATMENT TO FINISHED PAD PER CIVIL DWG



**LFK ARCHITECTS**  
 Land Planning + Feasibility Studies  
 Commercial + Residential Design  
 www.lfkarchitect.com  
 LFK ARCHITECTS, LLC  
 886 JOHNNIE DODDS BLVD  
 SUITE 200  
 MOUNT PLEASANT, SC 29464  
 LOSSE F. KNIGHT III, AIA  
 losse@lfkarchitect.com  
 phone: 843-330-9949

JOB NUMBER: 000  
 DRAWN: AJR  
 CHECKED: LFK

REVISION NOTES:

HIGHWAY 17 RETAIL VILLAGE BUILDING "D"

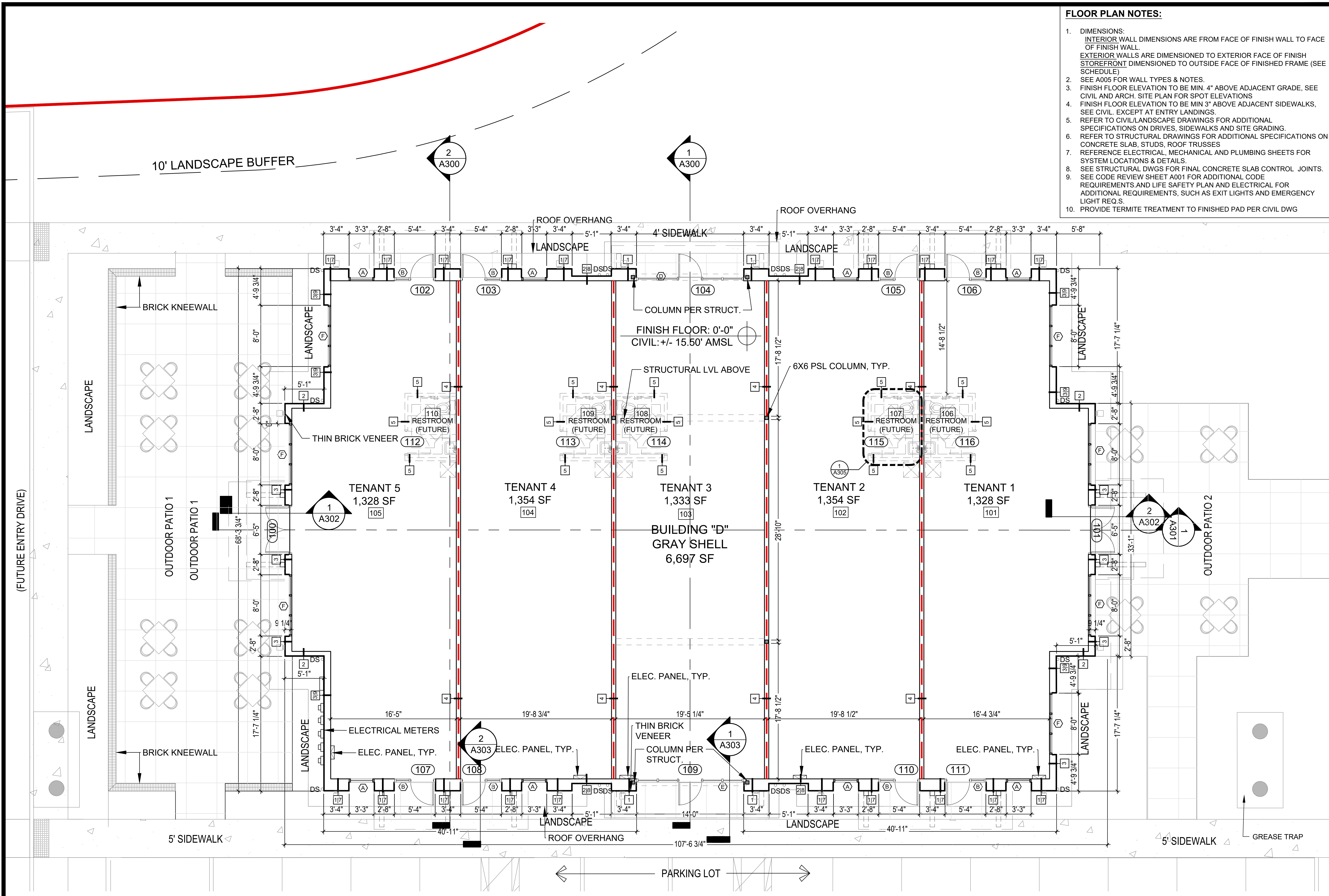
TMS#s 598-00-00-008, 598-00-00-010, 598-00-00-011  
MOUNT PLEASANT, SC

FLOOR PLAN & NOTES

SHEET NUMBER & TITLE:

A100

PERMIT/ CONSTRUCTION DRAWINGS  
02.27.2026



**1** PROPOSED FLOOR PLAN  
 SCALE: 3/16" = 1'-0" 6,697 SF

