

OFFICE FOR LEASE

CBRE

410

ADELAIDE
STREET
WEST

\$2.00
PSF/ANNUM



CHRIS VANEXAN*

Vice President
chris.vanexan@cbre.com
T +1 416 815 2376

*Sales Representative

SHAYLA ESAKOV

Sales Representative
shayla.esakov@cbre.com
T +1 647 965 6966

CBRE LIMITED, REAL ESTATE BROKERAGE






145 King Street West, Suite 1100
Toronto, Ontario Canada, M5H 1J8,
+1 416 362 2244, www.cbre.ca

AVAILABILITIES

CBRE

SUITES 201, 202, 213, 219, 222	Seats 10, 6, 5, 16, 4	Available Immediately Adelaide House Coworking
SUITE 500	6,580 Sq. Ft.	Available Immediately
SUITE 501	4,806 Sq. Ft.	LEASED

PROPERTY FEATURES

	Common showers on main floor
	Bike Storage on main floor
	Building is fully accessible at grade with push buttons and barrier free washrooms throughout
	Surface parking at the rear of the building
	Recently renovated lobby, elevator, and façade



Adelaide House Coworking

SUITES 201, 202, 213, 219, 222

Adelaide House Coworking is uniquely designed to feel like a “work home away from home”. Warm, modern, and intentionally free of the cold, corporate feel found in most offices. Every detail is curated for comfort and focus, from stylish, home-inspired furnishings to soft lighting and welcoming common areas. Members love the flexible terms, elevated service, and the genuine sense of community. It’s a space where people feel good the moment they walk in and work even better.

OCCUPANCY

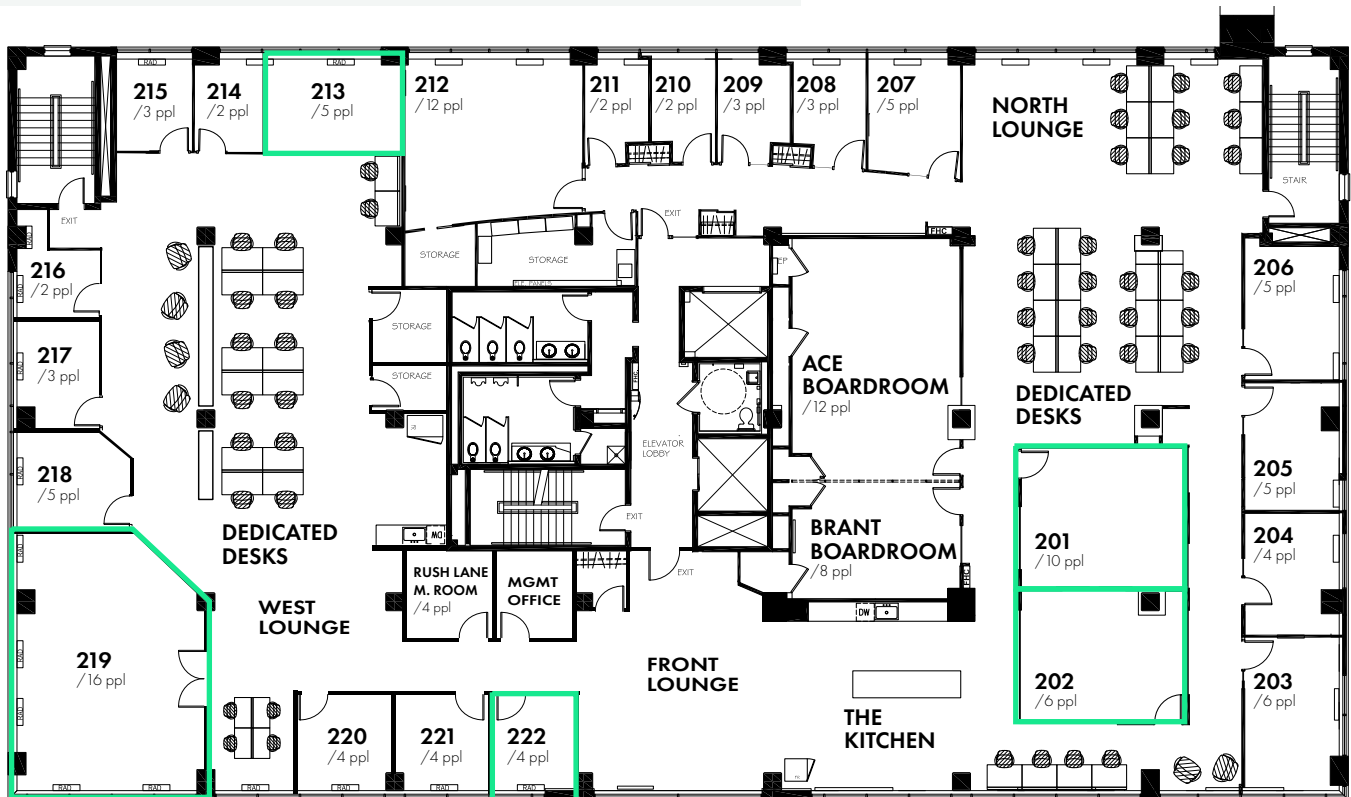
Immediately

FULL-TIME MEMBER BENEFITS

- On-site Community Managers
- WiFi/Power plus wired internet in offices
- Unlimited coffee & tea service
- Regular cleaning services; in-office included
- Invitations to member events & socials
- Access to member perks & benefits (discounts at a variety of businesses and services)
- Access to building’s secure bike storage and shower facilities
- Free access to three phone booths

SUITE	SEATS	MONTHLY RATE
SUITE 201	10	\$5,000
SUITE 202	6	\$3,300
SUITE 213	5	\$3,000
SUITE 219	16	\$9,600
SUITE 222	4	\$2,400

NOTE: 201 and 202 can be adjoining as they have a center wall/door that can be removed/opened.



Adelaide House Coworking

CBRE



SUITE 500

6,580 Sq. Ft.

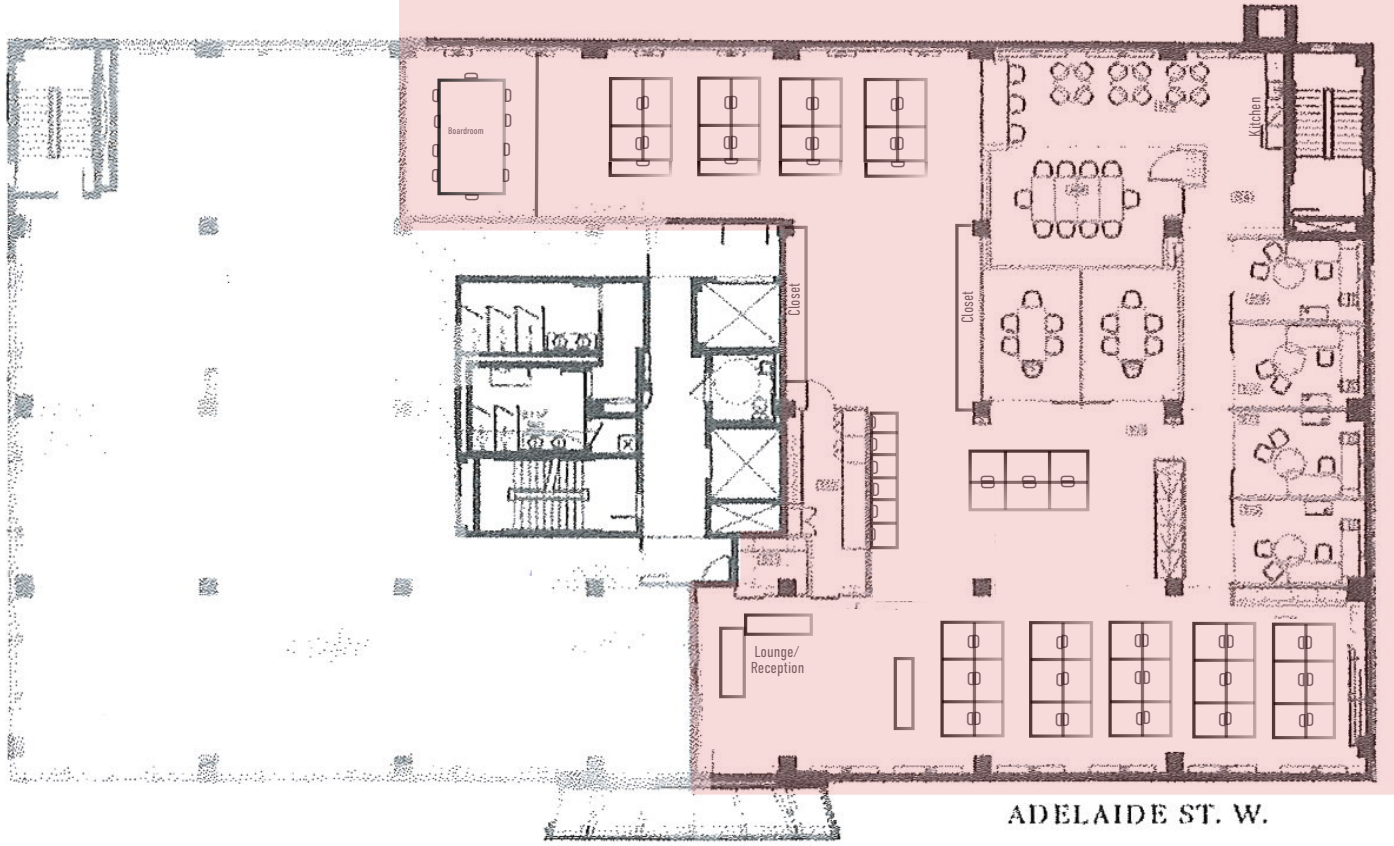
OCCUPANCY Available Immediately

NET RENT Call agent to discuss

ADDITIONAL RENT (2025 ESTIMATE) \$15.80 + utilities and in-suite janitorial

COMMENTS

- Unit is efficiently built out with 6 meeting rooms / offices, a kitchen, a large boardroom, open areas for workstations, multiple lounge areas, and a print room



SUITE 500

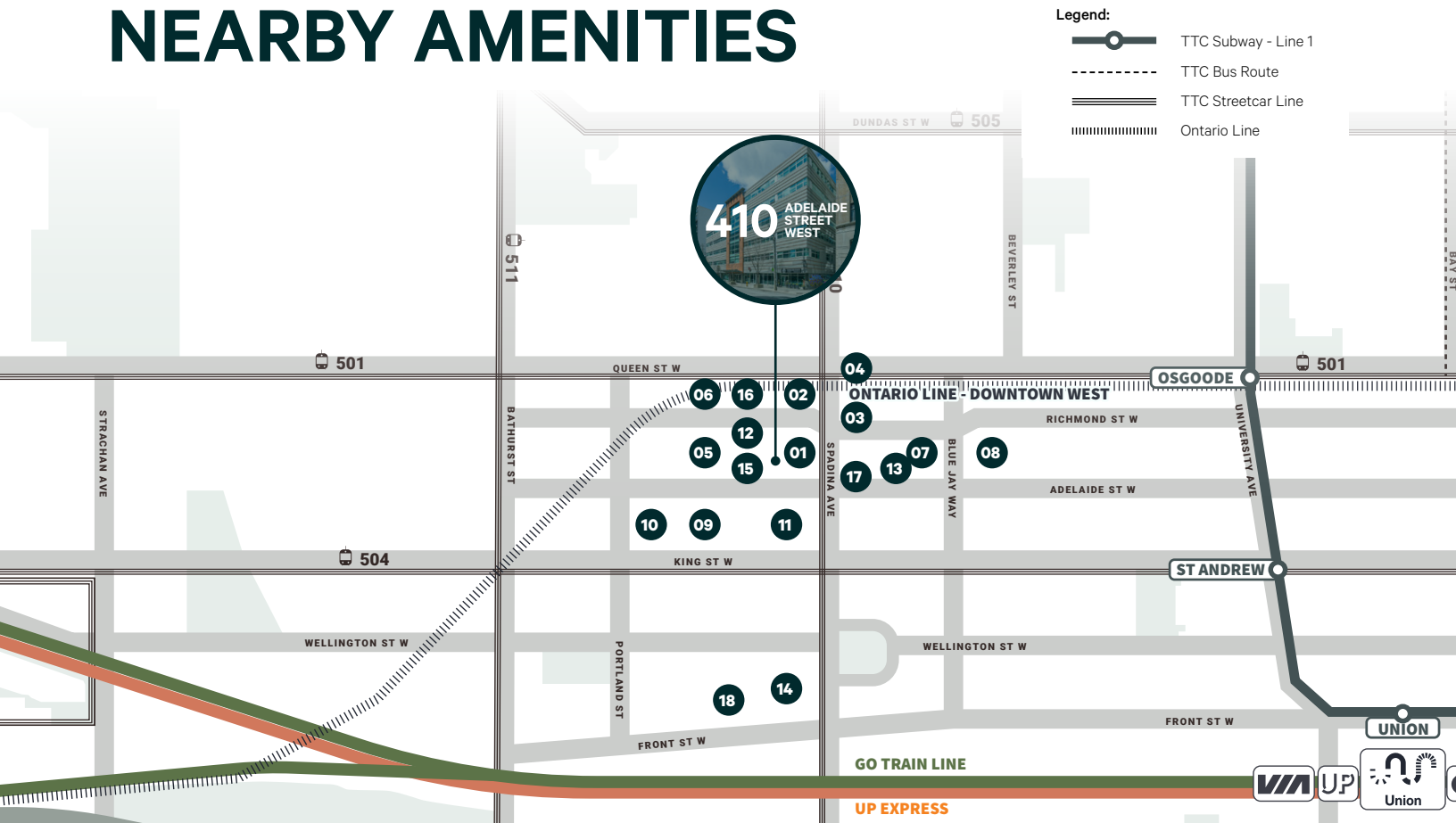
CBRE



PROPERTY LOCATION

410 Adelaide Street West is located north of Adelaide & west of Spadina Avenue. The building is steps away from the Spadina TTC Streetcar line and surrounded by a multitude of retail amenities, trendy restaurants, fitness spots & spas. The building is characterized by its open ceilings, exposed concrete floors and renovated common areas.

NEARBY AMENITIES



FOOD & DRINK

- | | |
|--|---|
| 01. Avenue Kitchen
Los Compas tacos | 07. Mother Tongue
Pho Ngoc Yen 3 |
| 02. Le Gourmand | 08. FLOCK rotisserie |
| 03. Fusaro's Italian Kitchen
Georgian House
Cheffry's Artisanal Bistro | 09. Nutbar
Myth
Cibo Wine Bar
Four Brothers Pizza |
| 04. Aloette Restaurant | 10. The Keg Steakhouse
GRETA Bar YYZ
Añejo Restaurant |
| 05. Waterworks Food Hall
Alder
Impact Kitchen | |
| 06. The Grand Indian Dining
520 Cafe Bar
Rosies Burgers | |

SHOPPING

- 11. Dollarama
Homesense
Patagonia
- 12. Deserres
Livestock
The Detox Market
Homebase
The Sports Collection
- 13. Bestco Fresh Foods
- 14. The Well

FITNESS

- 15. Oxygen Yoga & Fitness
barre3
Uncahined Athletics
Studio Fitness
- 16. Arazdon Fitness
- 17. 360 Degree Fitness
- 18. Sweat and Tonic

410 ADELAIDE STREET WEST

SHAYLA ESAKOV

Sales Representative
shayla.esakov@cbre.com
T +1 647 965 6966

CHRIS VANEXAN*

Vice President
chris.vanexan@cbre.com
T +1 416 815 2376

*Sales Representative

CBRE

This disclaimer shall apply to CBRE Limited, Real Estate Brokerage, and to all other divisions of the Corporation; to include all employees and independent contractors ("CBRE"). The information set out herein, including, without limitation, any projections, images, opinions, assumptions and estimates obtained from third parties (the "Information") has not been verified by CBRE, and CBRE does not represent, warrant or guarantee the accuracy, correctness and completeness of the Information. CBRE does not accept or assume any responsibility or liability, direct or consequential, for the Information or the recipient's reliance upon the Information. The recipient of the Information should take such steps as the recipient may deem necessary to verify the Information prior to placing any reliance upon the Information. The Information may change and any property described in the Information may be withdrawn from the market at any time without notice or obligation to the recipient from CBRE. CBRE and the CBRE logo are the service marks of CBRE Limited and/or its affiliated or related companies in other countries. All other marks displayed on this document are the property of their respective owners. All Rights Reserved.