



For Lease

2146-2148 3rd Street

COMPASS
COMMERCIAL

Flagship Retail, Showroom, or Experiential Space in the Heart of Dogpatch



Prime Dogpatch
Location

Situated along 3rd Street corridor, near Mission Bay, UCSF, and Chase Center in one of the city's fastest-growing creative and innovation districts.



Ideal for Lifestyle Brands
or Tech Companies

The layout supports flagship retail concepts, product showcases, AI demonstrations, experiential activations, and client engagement spaces.

2 Story - Retail & Events Space Available

Available SQFT:

3,099 SF

1,458 SF | The Commons

1,641 SF | The Speakeasy

*Opportunity to lease entire building or individual levels

Carla Pecoraro | CA Lic. No. 02019669
415 312 8901 | Carla@LL-CRE.com

Brian Leung | CA License No. 01203473
415 278 7838 | Brian@LL-CRE.com

Jeremy Lee | CA Lic. No. 01951309
415 988 9719 | Jeremy@LL-CRE.com

For Lease

2146-2148 3rd Street

COMPASS
COMMERCIAL

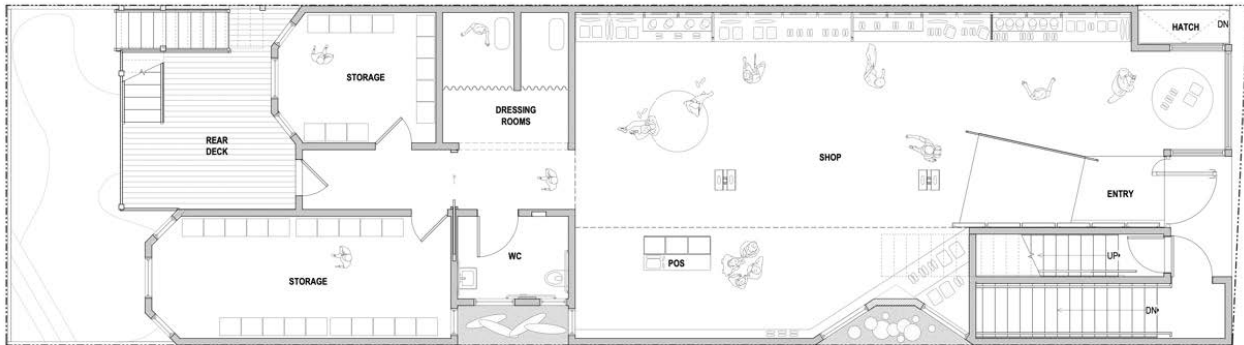
Leased

Loft Level - 1,588 SF

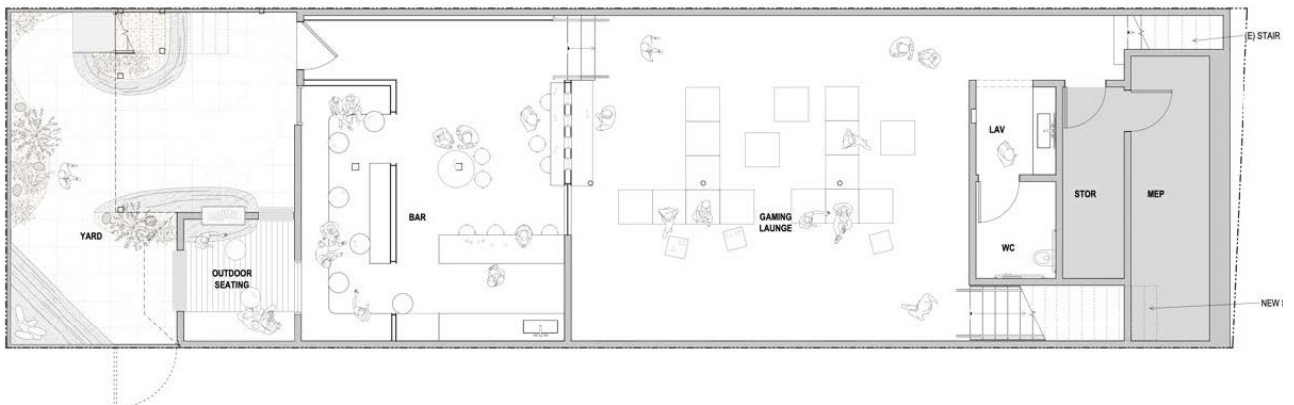


**Available in June 2027*

Commons Level - 1,458 SF



Speakeasy Level - 1,641 SF*





The Commons | 1,458 SF Ground Level

The 1,458 SF retail environment is defined by a premium aesthetic specifically designed to position products as the hero of the space. The Commons offers a meticulously curated selection of footwear, apparel, headwear, and accessories from both established global brands and emerging labels.





Speakeasy | 1,641 SF

Sublevel

Accessible via its own main entrance/street-level hatch, the sublevel features a speakeasy-style lounge designed for sports, gaming, and private events. An intimate bar and outdoor patio provide a versatile setting for a variety of events. Wooden slating and custom accent lighting define the space, creating a distinct aesthetic departure from the street-level retail floor.

Your Event, Defined. The Speakeasy, Yours. Our sublevel event suite is now available for rent.





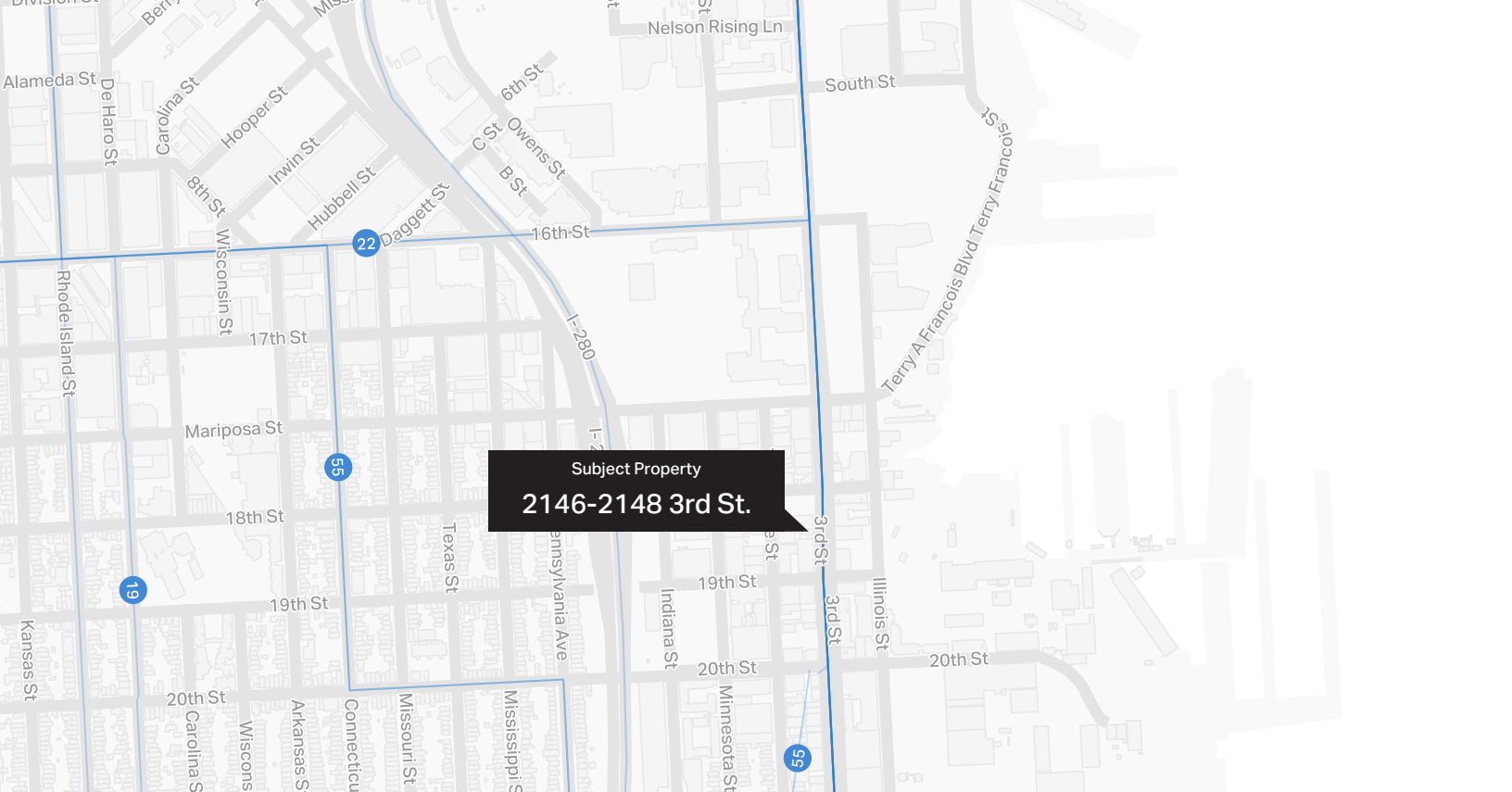
[view more of LEVELS](#)



DOGPATCH

The Dogpatch district has evolved from a 19th-century shipbuilding hub into San Francisco's premier "maker" district, where historic cottages sit alongside repurposed brick warehouses. This industrial soul is now anchored by the Chase Center, home of the Golden State Warriors, which has infused the waterfront with a high-energy pulse of sports and entertainment. From the artisan workshops of the American Industrial Center to the reclaimed beauty of Crane Cove Park, the neighborhood blends its blue-collar heritage with a sophisticated, modern edge.

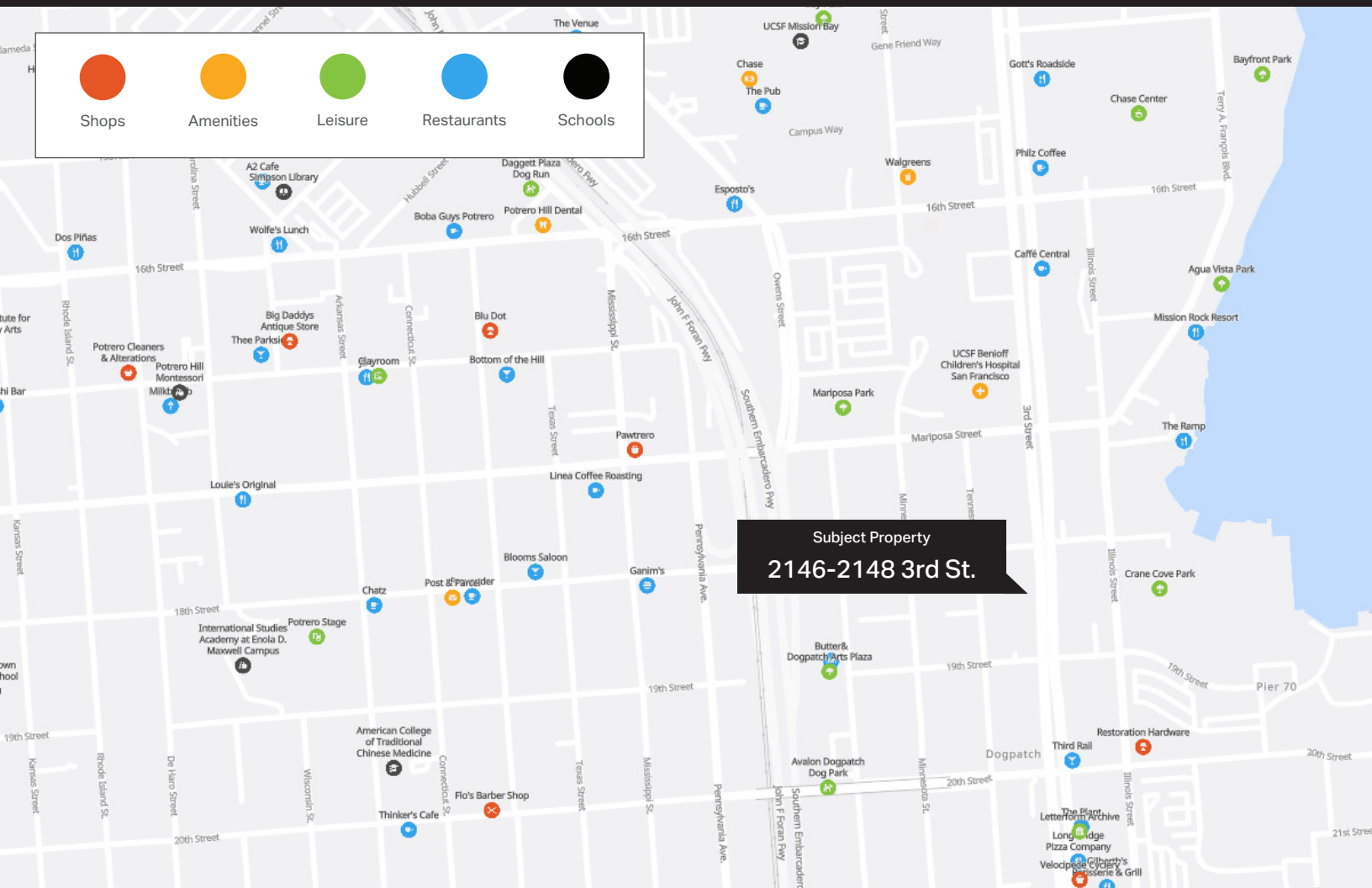




Subject Property
2146-2148 3rd St.

Convenient access to MUNI T-Third Street line, Caltrain, I-280, and Highway 101.

Located near Mission Bay biotech campuses, UCSF, Chase Center events, and a thriving mix of restaurants, creative studios, and emerging brands.



- Shops
- Amenities
- Leisure
- Restaurants
- Schools

Subject Property
2146-2148 3rd St.



For Lease

2146-2148 3rd Street

COMPASS
COMMERCIAL

Contact

Carla Pecoraro | CA Lic. No. 02019669 | 415 312 890 | Carla@LL-CRE.com

Brian Leung | CA License No. 01203473 | 415 278 7837 | Brian@LL-CRE.com

Jeremy Lee | CA Lic. No. 01951309 | 415 988 9719 | Jeremy@LL-CRE.com