

FOR LEASE

# MT. SCOTT PROFESSIONAL CENTER

9200 SE 91ST AVE, HAPPY VALLEY, OR

*2,013 RSF Clinic Space*

9200  
MT. SCOTT | PROFESSIONAL CENTER

KIDDER.COM

**ANCHOR**  
HEALTH PROPERTIES

**km** Kidder  
Mathews

# MT. SCOTT PROFESSIONAL CENTER



*Located right off of I-205 with close proximity to major hospitals and minutes to restaurants and shopping off of 82nd Ave.*

ADDRESS	9200 SE 91st Ave Happy Valley, OR
BUILDING SF	±38,860 RSF
YEAR BUILT	2002
PARKING	155 spaces
STORIES	Three
OWNERSHIP	Anchor Health Properties
LEASE RATE	\$28.00/SF, NNN

*2002*  
YEAR BUILT

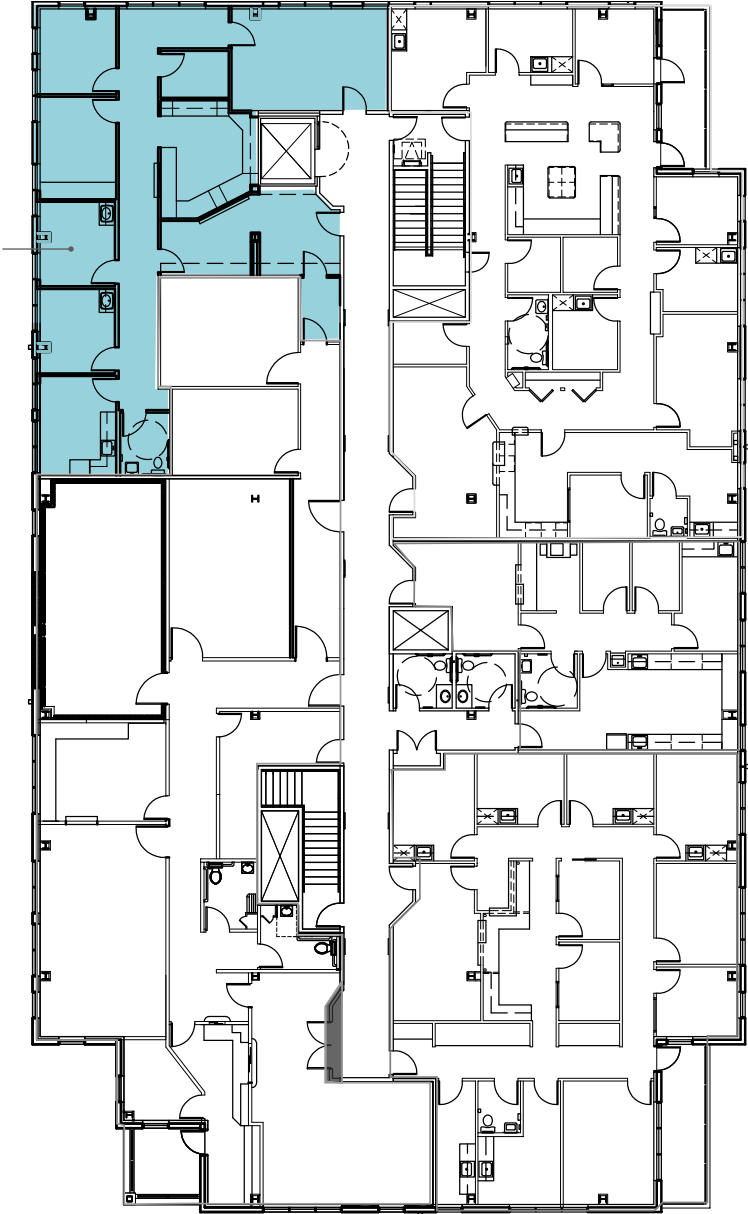
*THREE*  
STORIES

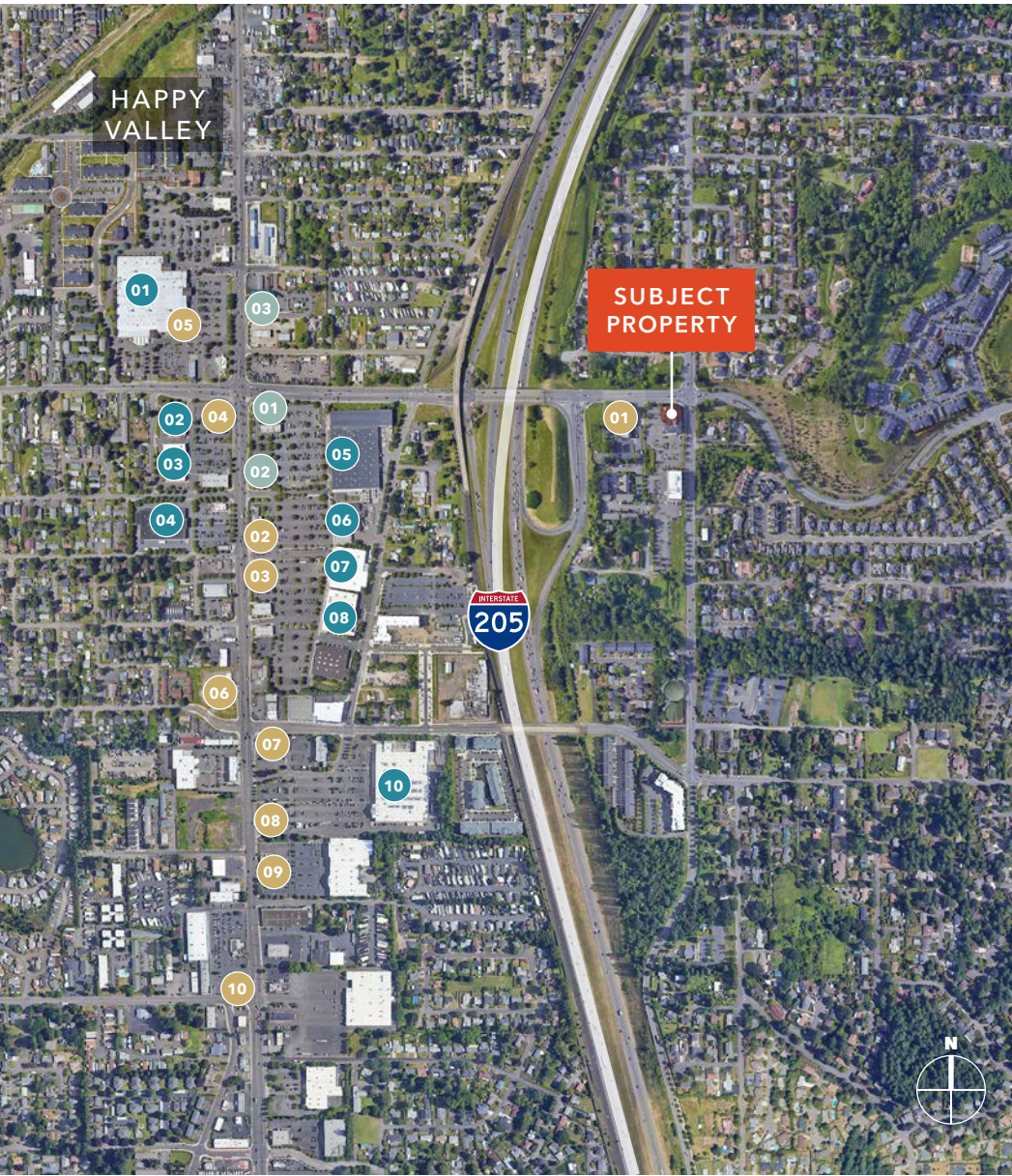


# THIRD FLOOR PLAN

SUITE 340: 2,013 RSF

SUITE 340  
2,013 SF





## NEARBY AMENITIES

### RESTAURANTS & BARS

- 01 Biscuits Cafe
- 02 Outback Steakhouse
- 03 Starbucks
- 04 Panda Express
- 05 Five Guys
- 06 Dutch Bros
- 07 Krispy Kreme Doughnuts
- 08 Carl's Jr
- 09 Applebee's
- 10 Arby's

### GROCERY & RETAIL

- 01 Fred Meyer
- 02 Walgreens
- 03 Trader Joe's
- 04 Sportsman Warehouse
- 05 Home Depot
- 06 Petsmart
- 07 Dick's Sporting Goods
- 08 Best Buy
- 09 Goodwill
- 10 Walmart

### BANKS

- 01 Unitus Community Credit Union
- 02 Wells Fargo Bank
- 03 Columbia Bank



*Exclusively listed by*

MARK FRASER  
503.750.8200  
mark.fraser@kidder.com

ALEX HENDERSON  
503.830.5431  
alex.henderson@kidder.com

KIDDER.COM

OWNED BY

**ANCHOR**  
HEALTH PROPERTIES

EXCLUSIVELY LEASED BY

**km** Kidder  
Mathews

This information supplied herein is from sources we deem reliable. It is provided without any representation, warranty, or guarantee, expressed or implied as to its accuracy. Prospective Buyer or Tenant should conduct an independent investigation and verification of all matters deemed to be material, including, but not limited to, statements of income and expenses. Consult your attorney, accountant, or other professional advisor.