

FLINN
FERGUSON
cresa

Colman Building

811 1st Avenue
Suite 409
Seattle, WA 98104

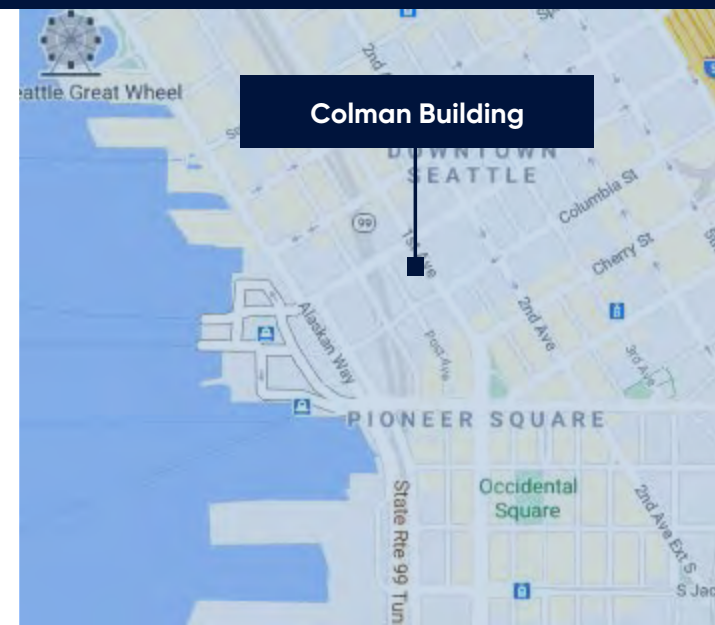


Sublease Highlights

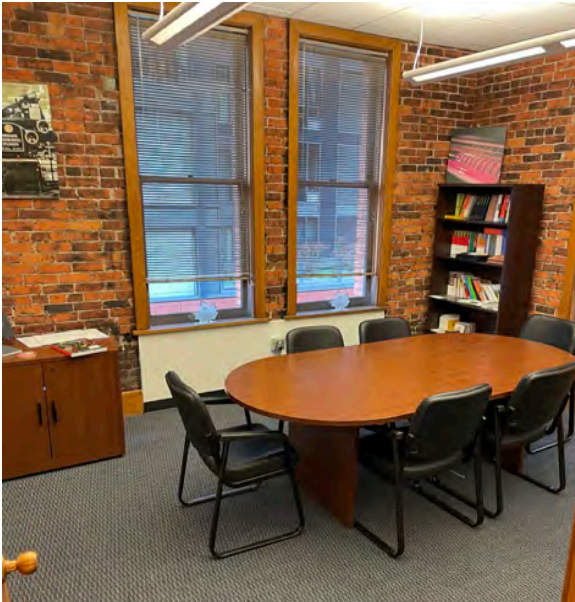
- » 2,106 RSF
- » Available Immediately
- » June 30, 2026 Expiration
- » Fully Cabled and Furnished
- » \$2/SF Procuring Broker Commission

FOR LEASING INFORMATION, PLEASE CONTACT:

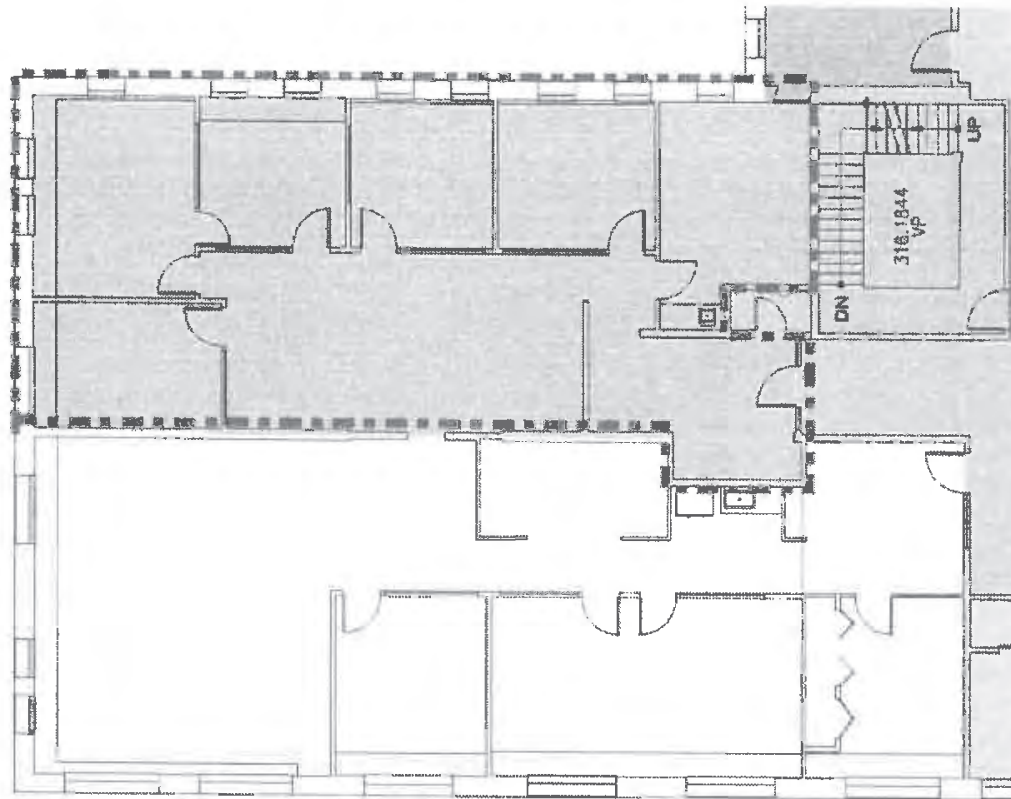
JACK STORY
206.626.0887
jack@flinnferguson.com



Colman Building



Approximately
 $\pm 2,106$ RSF



FOR LEASING INFORMATION, PLEASE CONTACT:

JACK STORY
206.626.0887
jack@flinnferguson.com