

# LUKE STREET BUSINESS PARK

FOR LEASE • 1,130 – 5,526 SF



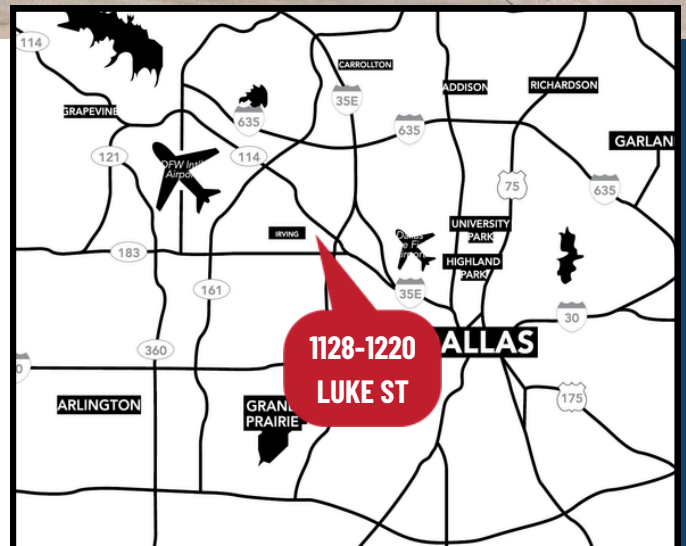
1100-1220 LUKE ST.  
IRVING, TEXAS 75061



**ALEX BRYAN**  
972.965.2878  
alex@richyoungcompany.com

**GARRETT GOLDSTEIN**  
214.364.0674  
garrett@richyoungcompany.com

Owned and Managed by:



# LUKE STREET BUSINESS PARK

FOR LEASE • 1,130 – 5,526 SF

## Property Details

- Move in ready spaces
- Easy access to Hwy 161 and Hwy 183
- 100% Air-conditioned
- Pin weld insulation
- 3-phase power
- Grade level loading
- Made ready offices

## AVAILABLE SUITES:

- Suite 1128 – 2,918 SF
- Suite 1104/1108 – 5,526 SF
- Suite 1210 – 1,130 SF

**ALEX BRYAN**

972.965.2878

[alex@richyoungcompany.com](mailto:alex@richyoungcompany.com)

**GARRETT GOLDSTEIN**

214.364.0674

[garrett@richyoungcompany.com](mailto:garrett@richyoungcompany.com)

Owned and Managed by:



# LUKE STREET BUSINESS PARK

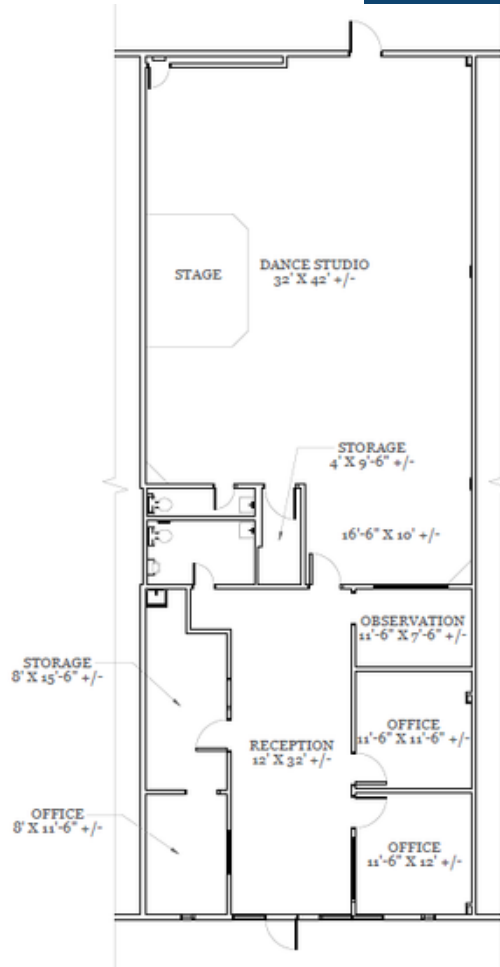
FOR LEASE • 1,130 – 5,526 SF



## Available Space:

#1210 - 1,130 SF

#1128 - 2,918 SF



**ALEX BRYAN**  
972.965.2878  
alex@richyoungcompany.com

**GARRETT GOLDSTEIN**  
214.364.0674  
garrett@richyoungcompany.com

Owned and Managed by:



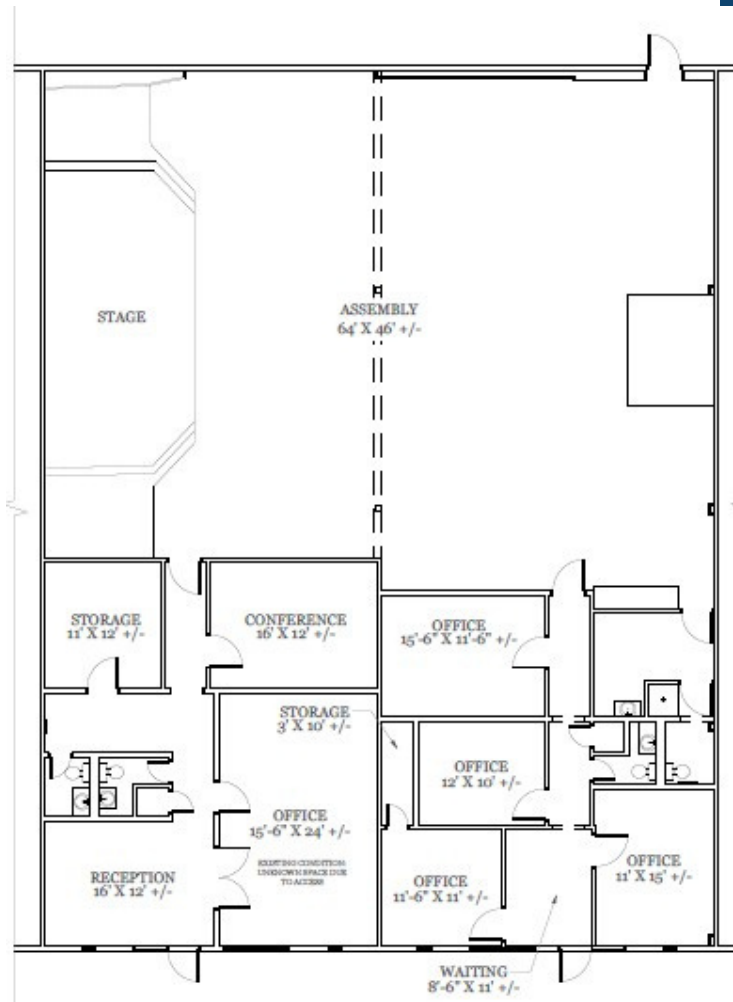
# LUKE STREET BUSINESS PARK

FOR LEASE • 1,130 – 5,526 SF



## Available Space:

#1104/1108 - 5,526 SF



**ALEX BRYAN**  
972.965.2878  
alex@richyoungcompany.com

**GARRETT GOLDSTEIN**  
214.364.0674  
garrett@richyoungcompany.com

Owned and Managed by:



# LUKE STREET BUSINESS PARK

FOR LEASE • 1,130 – 5,526 SF



**ALEX BRYAN**  
972.965.2878  
alex@richyoungcompany.com

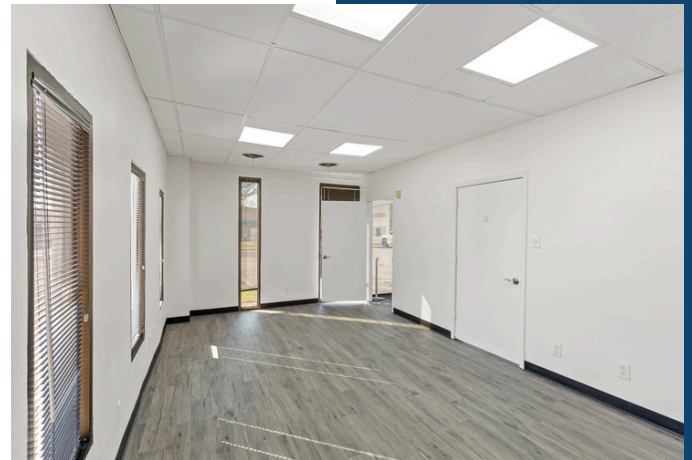
**GARRETT GOLDSTEIN**  
214.364.0674  
garrett@richyoungcompany.com

Owned and Managed by:



# LUKE STREET BUSINESS PARK

FOR LEASE • 1,130 – 5,526 SF



**ALEX BRYAN**  
972.965.2878  
alex@richyoungcompany.com

**GARRETT GOLDSTEIN**  
214.364.0674  
garrett@richyoungcompany.com

Owned and Managed by:



# LUKE STREET BUSINESS PARK

FOR LEASE • 1,130 – 5,526 SF



**ALEX BRYAN**  
972.965.2878  
alex@richyoungcompany.com

**GARRETT GOLDSTEIN**  
214.364.0674  
garrett@richyoungcompany.com

Owned and Managed by:

