

Sunshine Engineering Ltd. Co.
 FEMC# 00009251
 P.O. Box 381144
 (941) 743-3618
 Murdock, FL 33938
 Fax (941) 625-6626

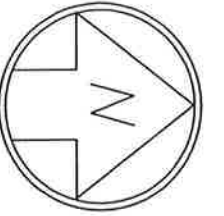
REVISION	DATE	BY	NO.

DRAWN BY: TEB
 CHECKED BY: KJL
 DATE: 2-15-07

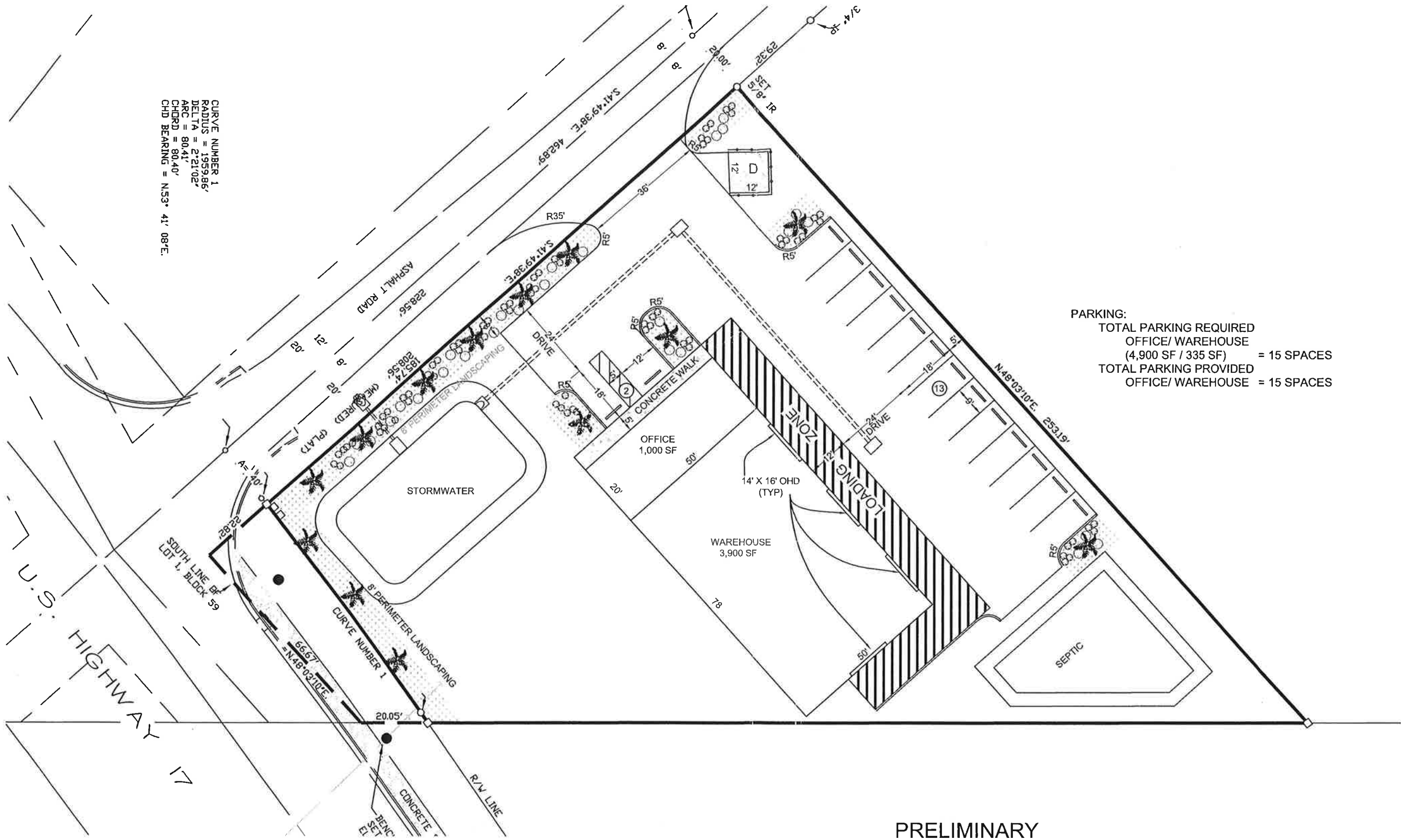
SITE PLAN
 CORNER STRUCTURE COMMERCIAL

CLIENT: MONA L HENRY
 LOCATION: 1420 HARBOR AVE
 PUNTA GORDA, FLORIDA
 SECTION 35, TOWNSHIP 40, RANGE 23

SHEET: 3 OF 9
 SCALE: 1 TO 30
 PROJECT NO: 07-SD760



CURVE NUMBER 1
 RADIUS = 1959.86'
 DELTA = 2°21'02"
 ARC = 80.41'
 CHORD = 80.40'
 CHD BEARING = N53° 41' 08"E



PARKING:
 TOTAL PARKING REQUIRED
 OFFICE/ WAREHOUSE
 (4,900 SF / 335 SF) = 15 SPACES
 TOTAL PARKING PROVIDED
 OFFICE/ WAREHOUSE = 15 SPACES

PRELIMINARY

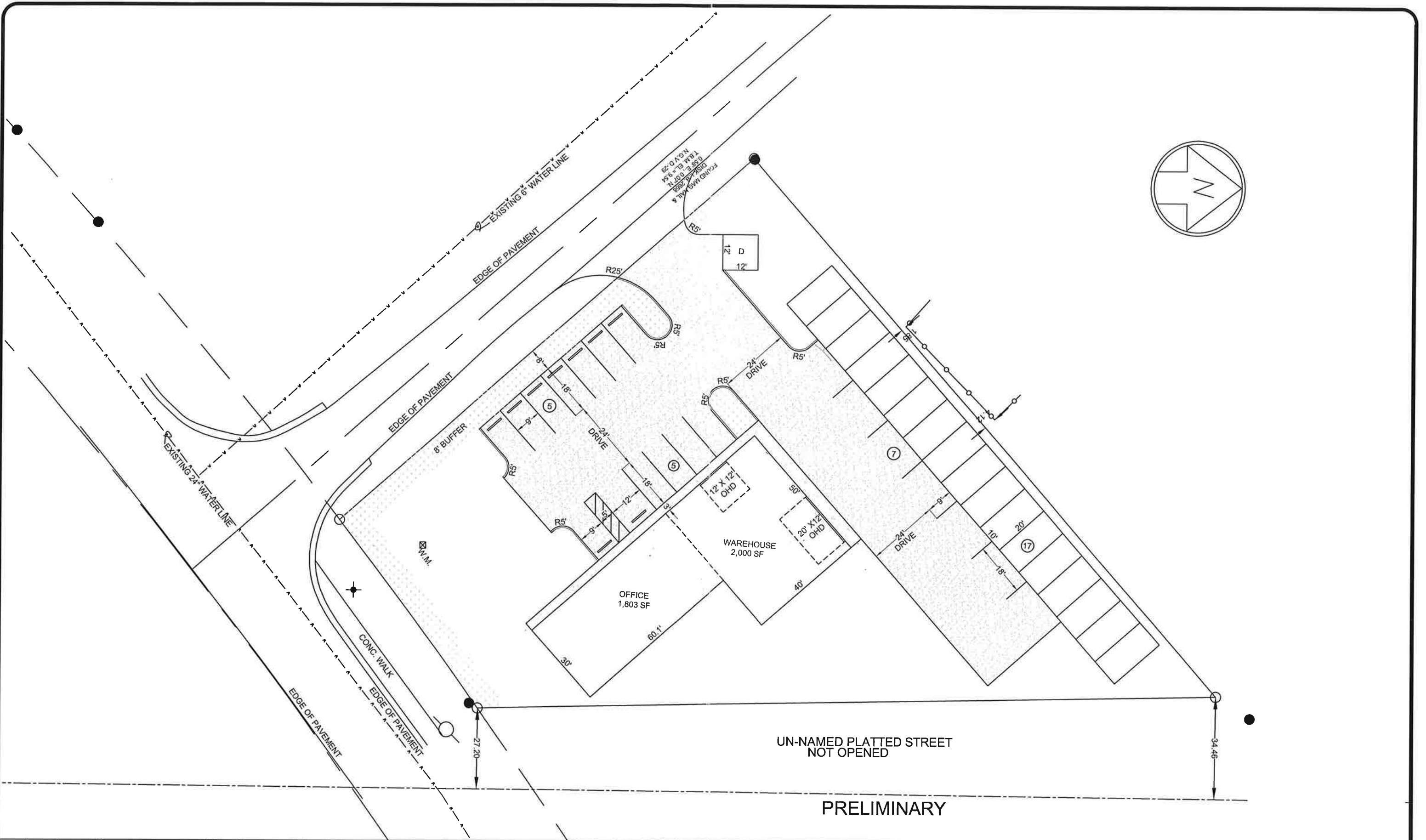
Sunshine Engineering Ltd. Co.
 FEMC# 00009251
 P.O. Box 381144 Murdock, FL 33938
 (941) 743-3618 Fax (941) 625-6626

REVISION	DATE	BY	NO.	DRAWN BY: TEB
				CHECKED BY: KJL
				DATE: 2-15-07

SITE PLAN
 CORNER STRUCTURE COMMERCIAL

CLIENT: MONA L HENRY
 LOCATION: 1420 HARBOR AVE
 PUNTA GORDA, FLORIDA
 SECTION 35, TOWNSHIP 40, RANGE 23

SHEET: 3 OF 9
 SCALE: 1 TO 30
 PROJECT NO: 07-SD760



PRELIMINARY

Sunshine Engineering Ltd. Co.
 FEMC# 00009251
 P.O. Box 381144 Murdock, FL 33938
 (941) 743-3618 Fax (941) 625-6626

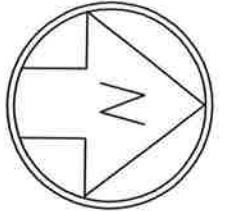
REVISION	DATE	BY	NO.

DRAWN BY: TEB
 CHECKED BY: KJL
 DATE: 2-15-07

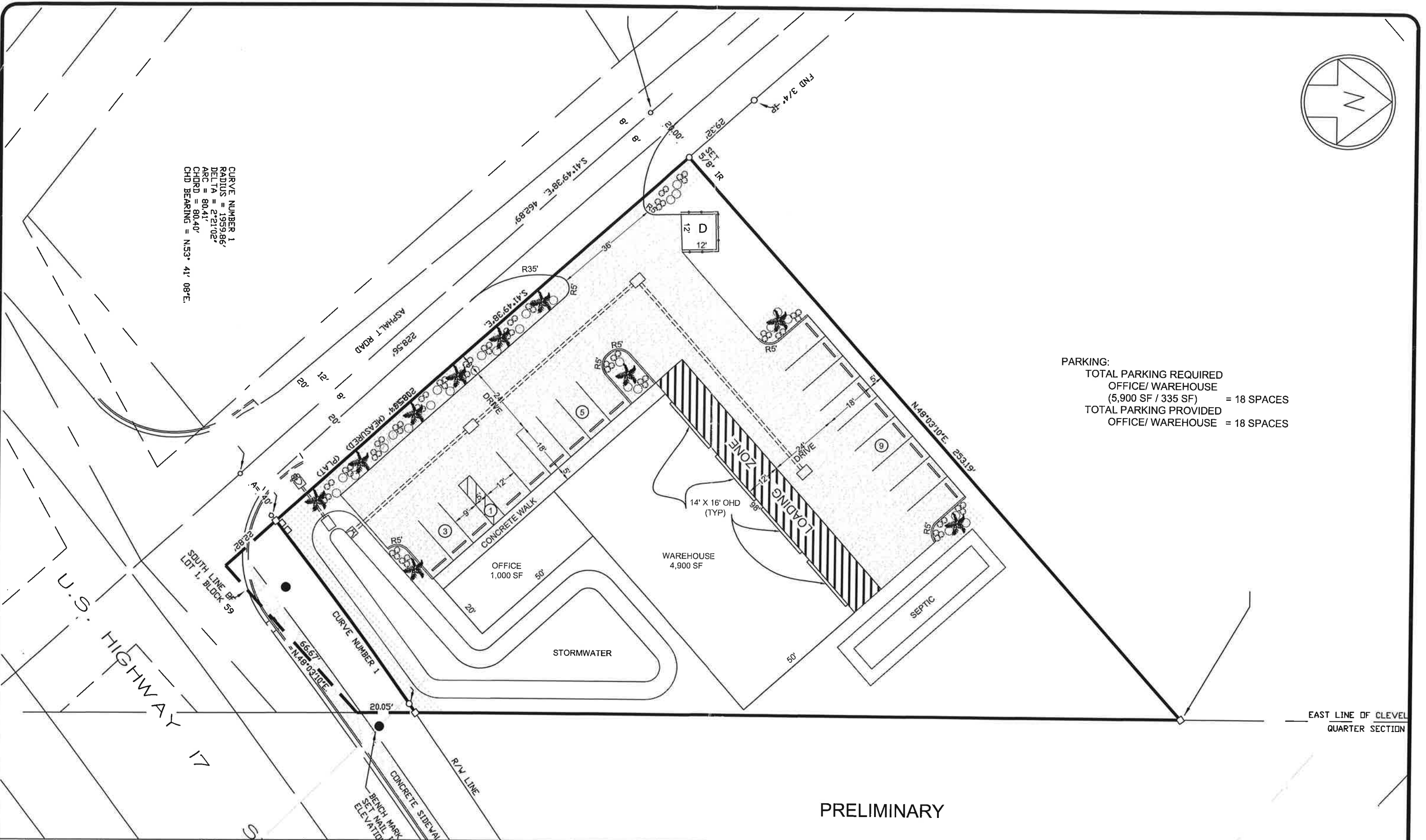
SITE PLAN
 CORNER STRUCTURE COMMERCIAL

CLIENT: MONA L HENRY
 LOCATION: 1420 HARBOR AVE
 PUNTA GORDA, FLORIDA
 SECTION 35, TOWNSHIP 40, RANGE 23

SHEET: 3 OF 9
 SCALE: 1 TO 30
 PROJECT NO: 07-SD760



CURVE NUMBER 1
 RADIUS = 1959.86'
 DELTA = 2°21'02"
 ARC = 80.41'
 CHD BEARING = N53° 41' 08"E



PARKING:
 TOTAL PARKING REQUIRED
 OFFICE/ WAREHOUSE
 (5,900 SF / 335 SF) = 18 SPACES
 TOTAL PARKING PROVIDED
 OFFICE/ WAREHOUSE = 18 SPACES

PRELIMINARY

Sunshine Engineering Ltd. Co.
 FEMC# 00009251
 P.O. Box 381144 Murdock, FL 33938
 (941) 743-3618 Fax (941) 625-6626

REVISION	DATE	BY	NO.	DRAWN BY: TEB
				CHECKED BY: KJL
				DATE: 2-15-07

SITE PLAN
 CORNER STRUCTURE COMMERCIAL

CLIENT: MONA L HENRY
 LOCATION: 1420 HARBOR AVE
 PUNTA GORDA, FLORIDA
 SECTION 35, TOWNSHIP 40, RANGE 23

SHEET: 3 OF 9
 SCALE: 1 TO 30
 PROJECT NO: 07-SD760