

FOR LEASE

GREEN VALLEY CIVIC CENTER

2625 N. Green Valley Parkway
Henderson, NV 89014



Pete Janemark, CCIM

Senior Vice President

D: 702.527.7923 | C: 702.885.7383

pete.janemark@svn.com

NV #S.76731



All SVN® offices are independently owned and operated.

PROPERTY SUMMARY



OFFERING SUMMARY

BUILDING SIZE:	106,920 SF
AVAILABLE SF:	1,229 - 1,686 SF
LOT SIZE:	5.96 Acres
ZONING:	CC
APN:	178-06-512-001, 002, 003, 004 and 178-06- 510-003

PROPERTY OVERVIEW

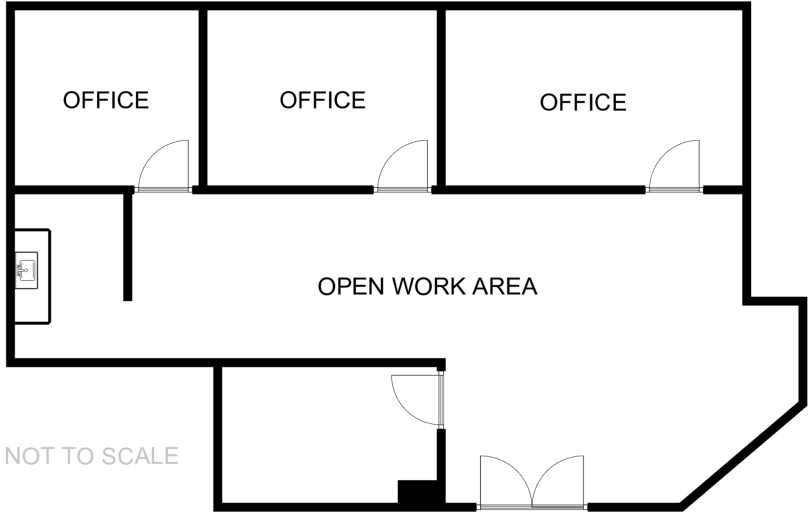
Green Valley Professional Center is conveniently located single story office complex located at the intersection of Green Valley Parkway and Sunset Road in Henderson. The grounds are open and spacious with upgraded landscaping and break areas. The area offers substantial shopping, services and eateries in all direction, many within walking distance. The property is flanked by the Green Valley Library, and the intersection is served by two major bus routes.

PROPERTY HIGHLIGHTS

- Signalized entrance
- Ample dedicated parking
- Ample shopping and services
- Central Location

PETE JANEMARK, CCIM
O: 702.527.7923 | C: 702.885.7383
pete.janemark@svn.com
NV #S.76731

2625 GREEN VALLEY PARKWAY - SUITE 275 - ±1,686 SF



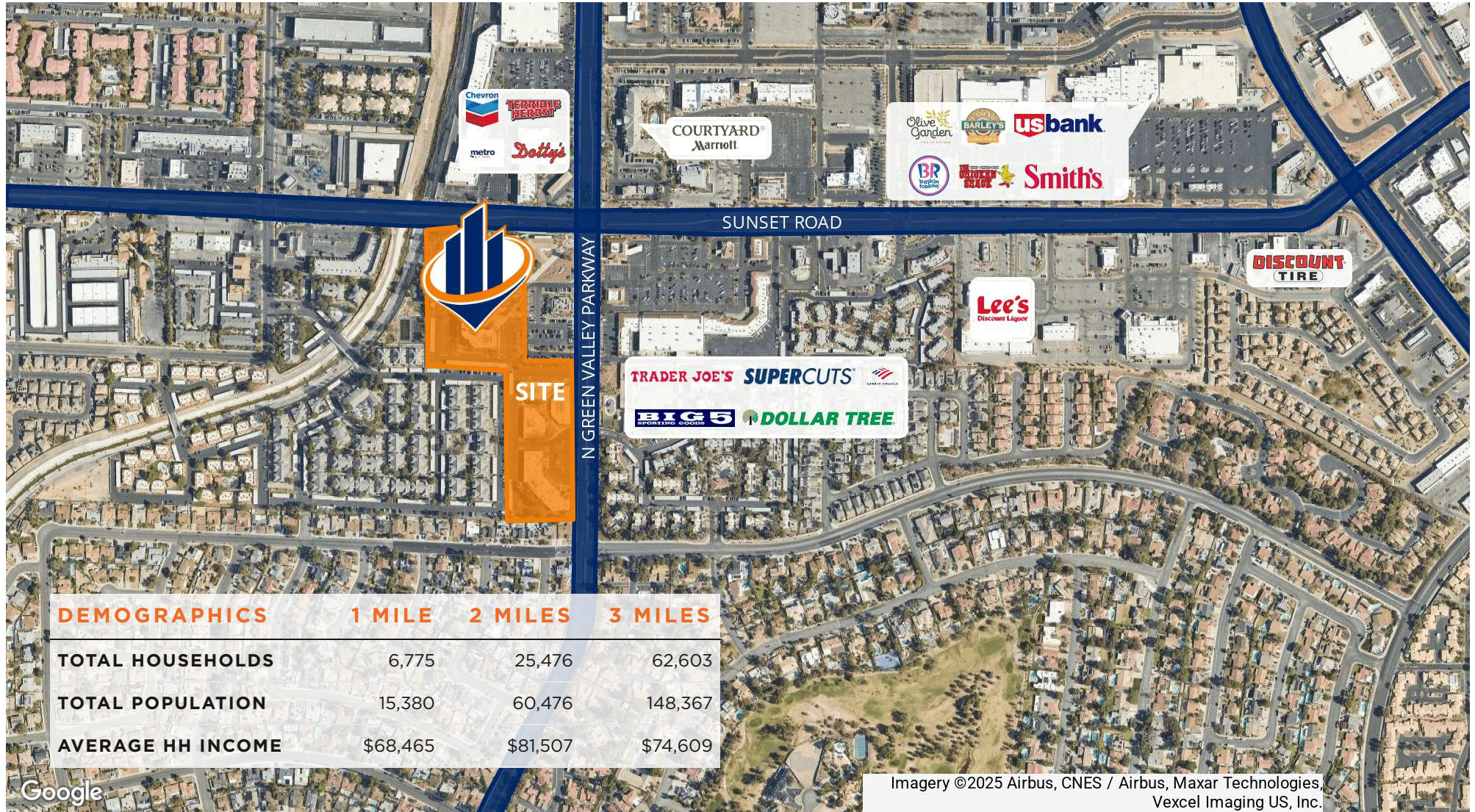
SUITE DESCRIPTION

Open suite featuring a very large conference/work room and 3 large offices with windows, and a break area with a sink.



PETE JANEMARK, CCIM
O: 702.527.7923 | C: 702.885.7383
pete.janemark@svn.com
NV #S.76731

RETAILER MAP



PETE JANEMARK, CCIM
 O: 702.527.7923 | C: 702.885.7383
 pete.janemark@svn.com
 NV #S.76731