



# Class A Sublease Opportunity



**5605 Carnegie Blvd, Charlotte, NC  
28209 | Suite 150 | ± 1,730 RSF**

Move in ready, plug-and-play sublease located in the heart of Charlotte's highly established and desirable SouthPark neighborhood, featuring double-door first-floor lobby exposure. Adjacent to Piedmont Row, the Renaissance Hotel, Legion Brewing, and just two blocks from SouthPark Mall and Symphony Park.

**SUBLEASE FEATURES:**

- FF&E negotiable
- Master Lease Expiration: 9/30/27
- Free 3-story parking deck with elevator and a ratio of 3.8 / 1,000 SF
- Multiple points of ingress and egress routes
- Impressive lobby space with expansive ceilings, polished granite floors, and mahogany accents.
- On-site property management
- **Asking Rate: Call for details**

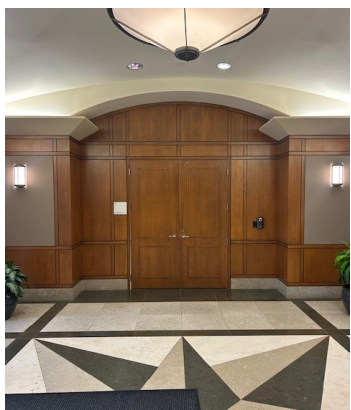
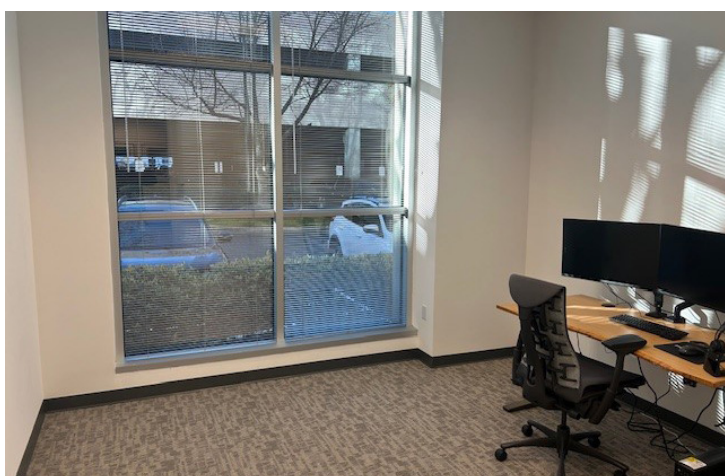
**Contact Us:**

**Adam Farber, SIOR**  
Senior Vice President | Office  
+1 704 409 2369  
adam.farber@colliers.com



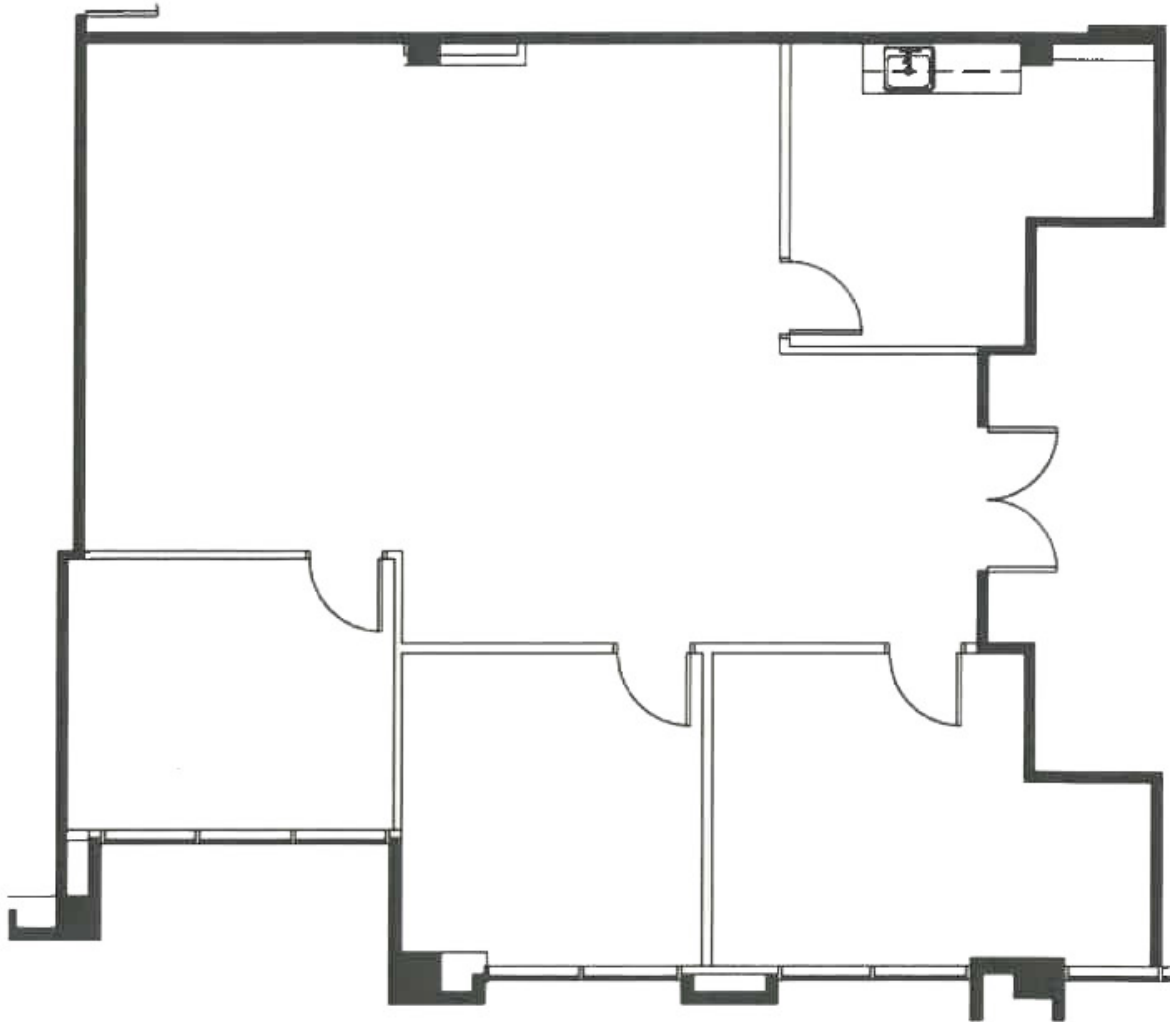
300 W. Summit Avenue  
Suite 200  
Charlotte, NC 28203  
+1 704 409 9933  
colliers.com

# 5605 Carnegie Blvd Suite 150



# Floor Plan

Suite 150 - ±1,730 RSF



# Property Location



**Adam Farber, SIOR**  
Senior Vice President  
+1 704 409 2369  
adam.farber@colliers.com



This document/email has been prepared by Colliers for advertising and general information only. Colliers makes no guarantees, representations or warranties of any kind, expressed or implied, regarding the information including, but not limited to, warranties of content, accuracy and reliability. Any interested party should undertake their own inquiries as to the accuracy of the information. Colliers excludes unequivocally all inferred or implied terms, conditions and warranties arising out of this document and excludes all liability for loss and damages arising there from. This publication is the copyrighted property of Colliers and /or its licensor(s). © 2022. All rights reserved. This communication is not intended to cause or induce breach of an existing listing agreement. Colliers International Group Inc.