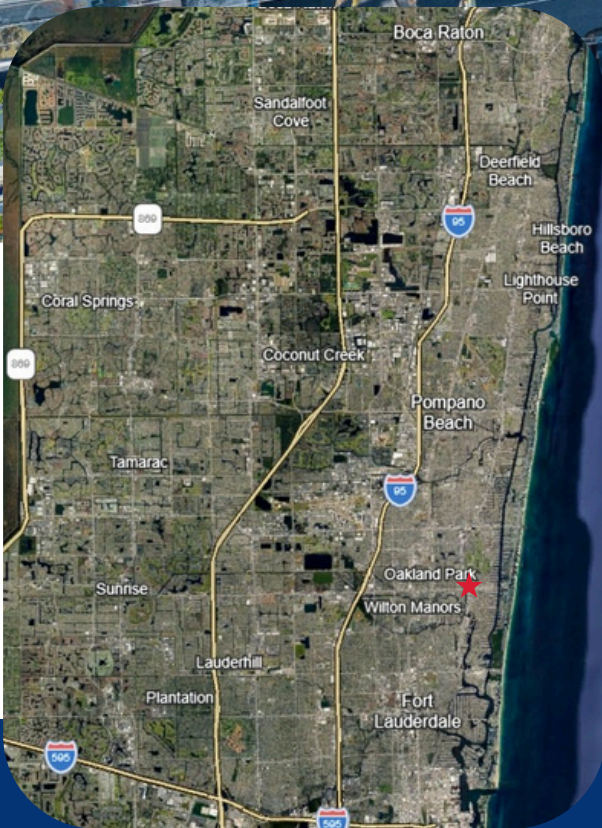


# KENANN BUILDING OFFICE & MEDICAL FOR LEASE



**\$19/SF - \$30/SF**  
BASE RATE



As a regional icon, 3101 N Federal Highway (the Kenann Building) stands as a distinct architectural landmark within the Oaklyn Campus. Located at one of the busiest intersections in Broward County, this eight-story building serves as a cornerstone of the city's first true live-work-play destination, featuring luxury on-site amenities such as coffee, sushi, gelato, premium burgers, healthy foods, fitness centers, and a pharmacy. The property has established itself as a leading location for office and medical professionals, situated between the affluent Coral Ridge Neighborhood and the popular housing areas of Wilton Manors and Oakland Park.

100,000 VEHICLES PER DAY

1 MILE TO THE BEACH

130,000 POPULATION

2 MILES TO I-95

\$95K AVG HH INCOME

2 MILES TO LAS OLAS

7 MILES TO FLL AIRPORT

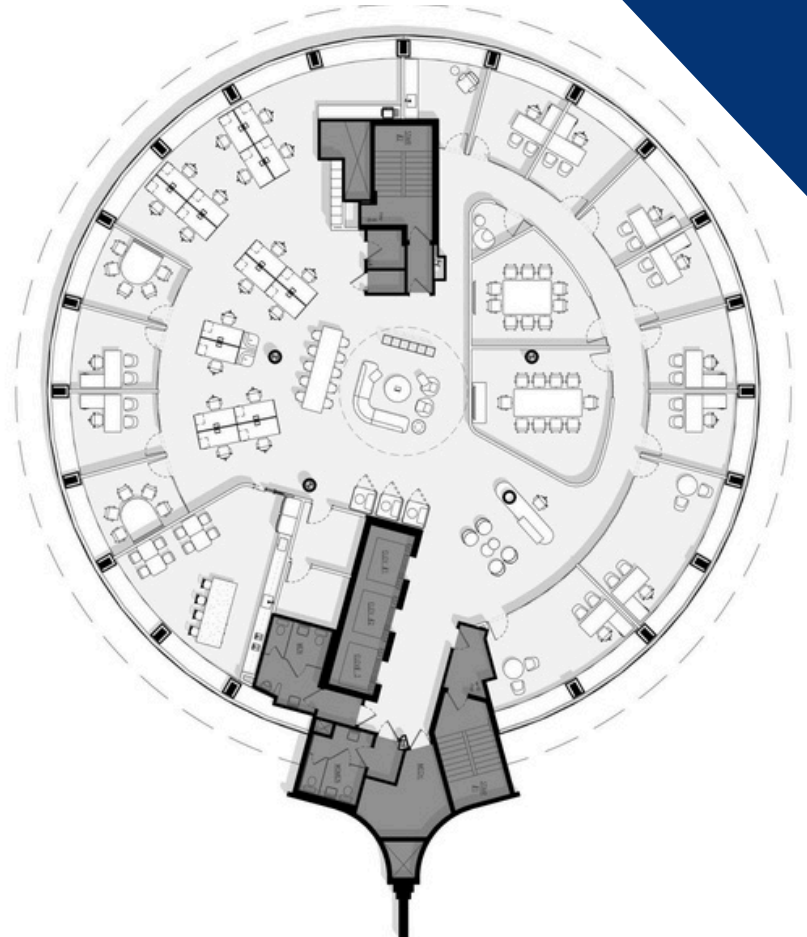
660+ PARKING SPACES



WILLIAM CABRERA  
 WILLC@LEVELREALTY.COM  
 954.820.5061

NICK BALDANZA  
 NICKB@LEVELREALTY.COM  
 954.372.7280

FLOOR	AVAILABILITY
8	9,500 SF SHELL
7	7,500 SF OFFICE BUILDOUT
6	<i>OCCUPIED</i>
5	3,800 SF OFFICE BUILDOUT
4	<i>OCCUPIED</i>
3	1,800 SF - 8,500 SF OFFICE BUILDOUT
2	6,200 SF RESTAURANT/LOUNGE BUILDOUT
1	<i>OCCUPIED</i>



WILLIAM CABRERA  
 WILLC@LEVELREALTY.COM  
 954.820.5061

NICK BALDANZA  
 NICKB@LEVELREALTY.COM  
 954.372.7280