



**OFFICE SPACE FOR LEASE**

# 1334 ASHTON RD

HANOVER, MD 21076



# 1334 ASHTON RD

HANOVER, MD 21076

## PROPERTY SUMMARY



### VIDEO

#### PROPERTY HIGHLIGHTS

- Office space available in corporate center
- Ample parking for tenants and visitors; 3.25 / 1,000 SF
- Flexible floor plan to accommodate various needs
- 16' Clear Heights
- Column Spacing: 25'w X 25'd
- Zoning: W1
- Immediate Access to I-95, Route 100, Route 97, and Baltimore-Washington Parkway; less than 5 miles from the BWI airport

#### OFFERING SUMMARY

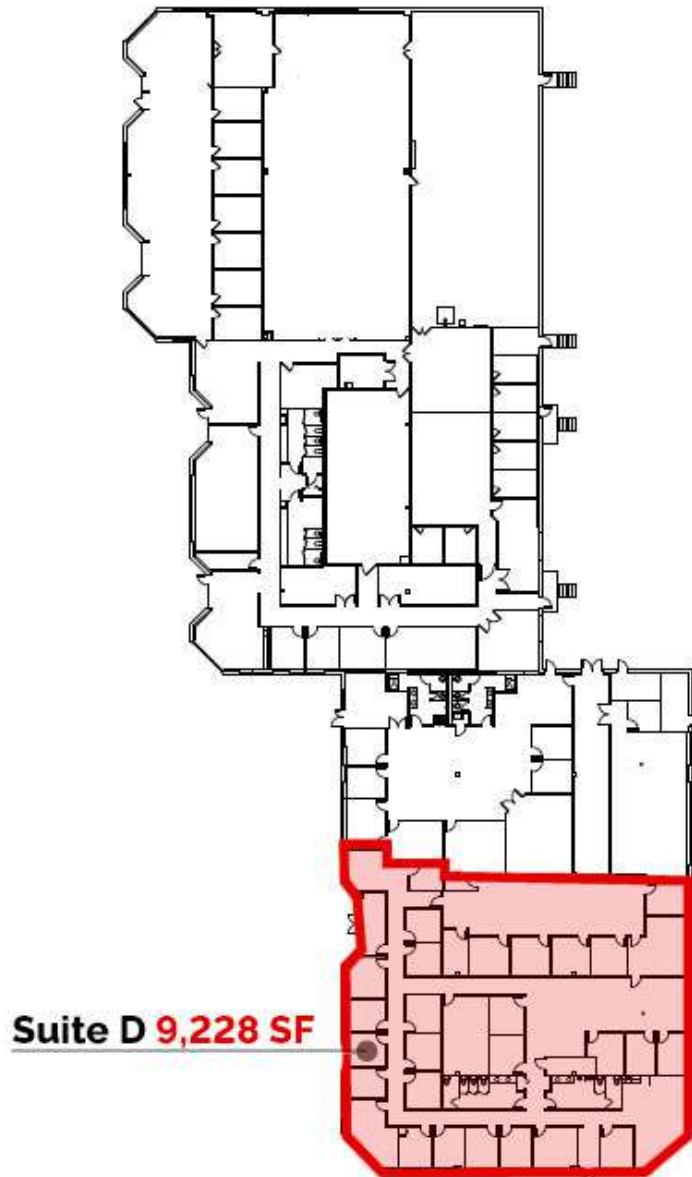
<b>Lease Rate:</b>	Negotiable
<b>Number of Units:</b>	1
<b>Available SF:</b>	9,228 SF
<b>Lot Size:</b>	168,144 SF
<b>Building Size:</b>	37,309 SF

<b>DEMOGRAPHICS</b>	<b>1 MILE</b>	<b>3 MILES</b>	<b>5 MILES</b>
<b>Total Households</b>	1,542	18,598	66,055
<b>Total Population</b>	4,051	50,351	185,295
<b>Average HH Income</b>	\$139,433	\$157,265	\$139,782

# 1334 ASHTON RD

HANOVER, MD 21076

## FLOOR PLAN



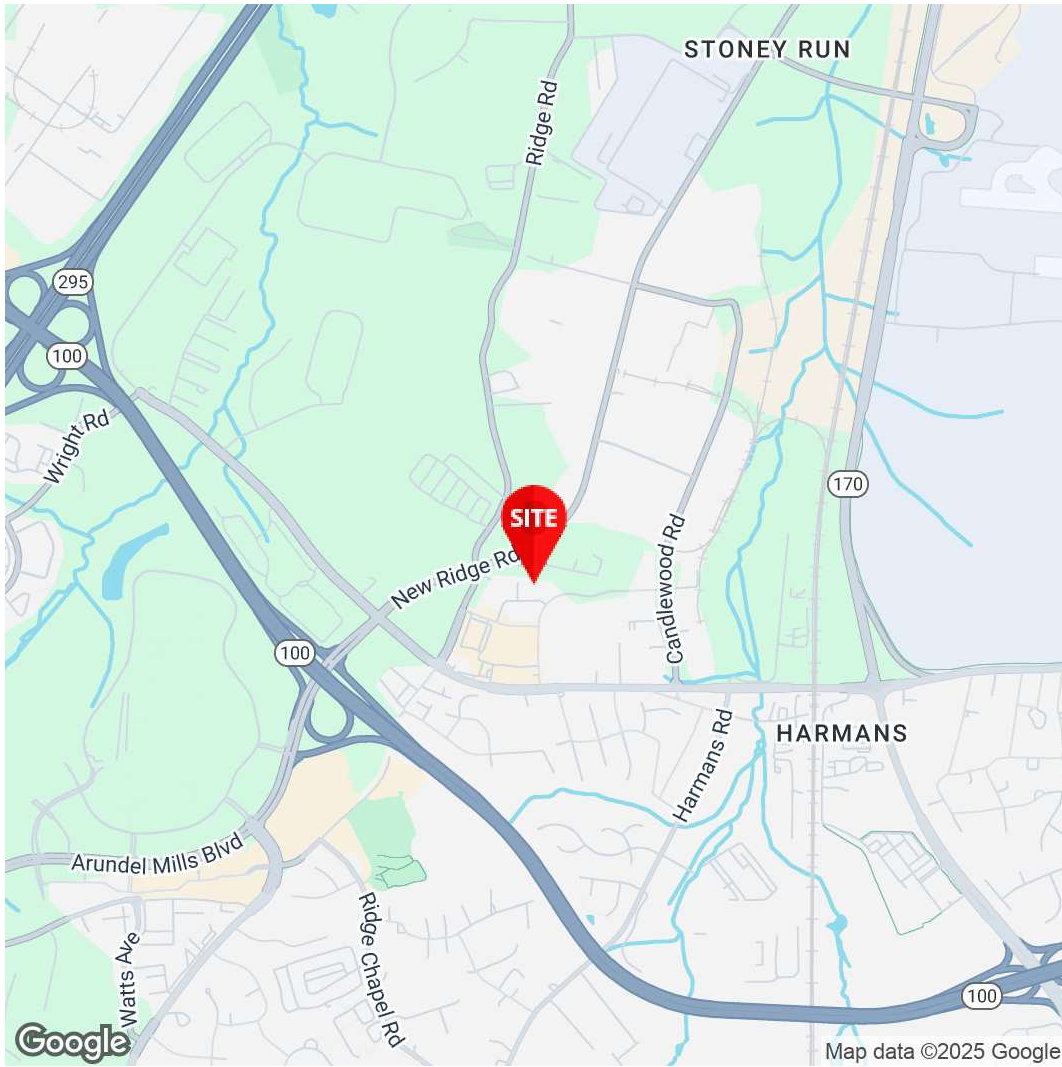
**Suite D 9,228 SF**

# 1334 ASHTON RD

HANOVER, MD 21076

RETAILER MAP





**Amit Grover**  
Assistant Vice President  
571.620.5143  
agrover@divaris.com



The information contained herein should be considered confidential and remains the sole property of Divaris Real Estate, Inc. at all times. Although every effort has been made to ensure accuracy, no liability will be accepted for any errors or omissions. Disclosure of any information contained herein is prohibited except with the express written permission of Divaris Real Estate, Inc.