



**EXCLUSIVE EXECUTIVE OFFICE FOR LEASE:  
228-234 OLD COUNTRY ROAD, MINEOLA, NY**

**SPACE AVAILABLE**

ENTIRE FLOOR  
2,935 SF (DIVISIBLE)

**RENTAL RATE**

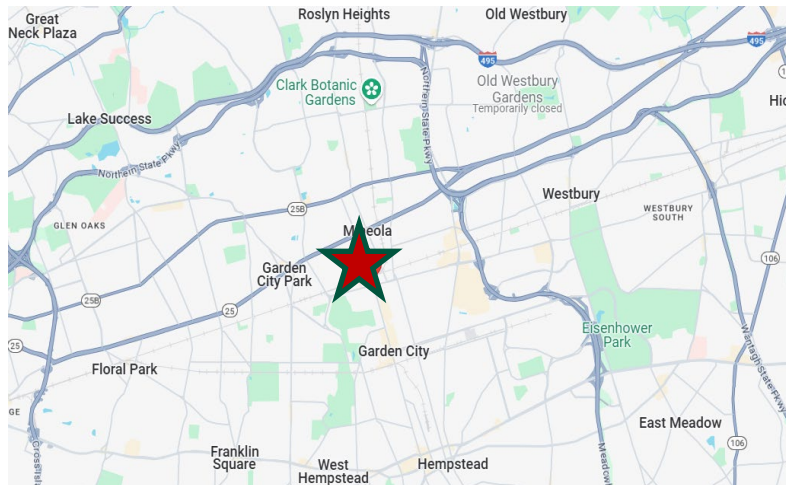
\$25.50 PSF  
FULL-SERVICE GROSS

**POSSESSION**

IMMEDIATE  
AVAILABILITY

**COMMENTS**

- PRIVATE PARKING
- COMMON BREAKROOM AREA
- SHORT WALK TO LIRR MINEOLA TRAIN STATION AND NASSAU COUNTY COURTS
- WALKING DISTANCE TO LOCAL SHOPS, BANKS, RESTAURANTS, ETC.



FOR FURTHER INFORMATION, PLEASE CONTACT:

**HARRIS ROUSSO**  
EXECUTIVE MANAGING DIRECTOR  
516-942-8300 EXT. 208  
[HROUSSO@RESLTD.COM](mailto:HROUSSO@RESLTD.COM)



Real Estate Strategies, Ltd.

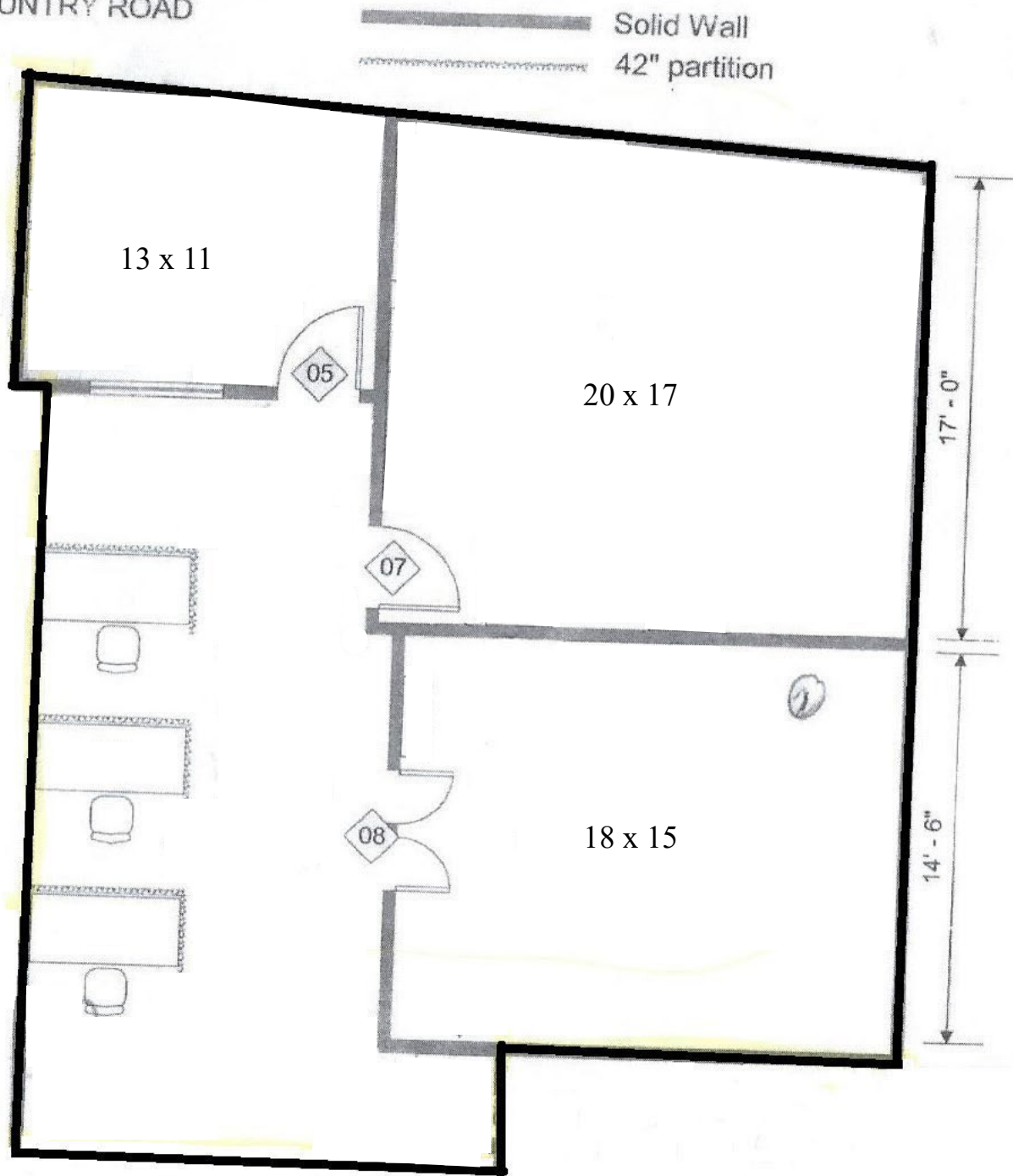
**NIKITA (NIK) PUSTOVOIT**  
ASSOCIATE DIRECTOR  
CELL: 631-889-1844  
[NPUSTOVOIT@RESLTD.COM](mailto:NPUSTOVOIT@RESLTD.COM)

500 North Broadway • Suite 165 • Jericho • New York • 11753 • P: 516-942-8300 • F: 516-942-8311

All information furnished regarding either property for sale, rental or the financing is from sources deemed reliable. No representation is made as to the accuracy thereof and submitted subject to errors, change of price, rental rates or other conditions, prior sale, lease or financing, or withdrawal without notice. All areas and dimensions are approximate.

# 228-234 OLD COUNTRY ROAD, MINEOLA, NY

OLD COUNTRY ROAD



500 North Broadway • Suite 165 • Jericho • New York • 11753 • P: 516-942-8300 • F: 516-942-8311

All information furnished regarding either property for sale, rental or the financing is from sources deemed reliable. No representation is made as to the accuracy thereof and submitted subject to errors, change of price, rental rates or other conditions, prior sale, lease or financing, or withdrawal without notice. All areas and dimensions are approximate.