

FOR LEASE

19,840 SQUARE FEET

2845 Pellissier Place, City of Industry, CA



CROSSROADS Industrial PARK

Excellent Freeway Identity



BUILDING FEATURES

Office: 2,100 Square Feet

Land Area: .9 Acres

Clear Height: 16'

Power: 200 amp, 277/480 volts, 3 phase

Loading:

2 Dock High

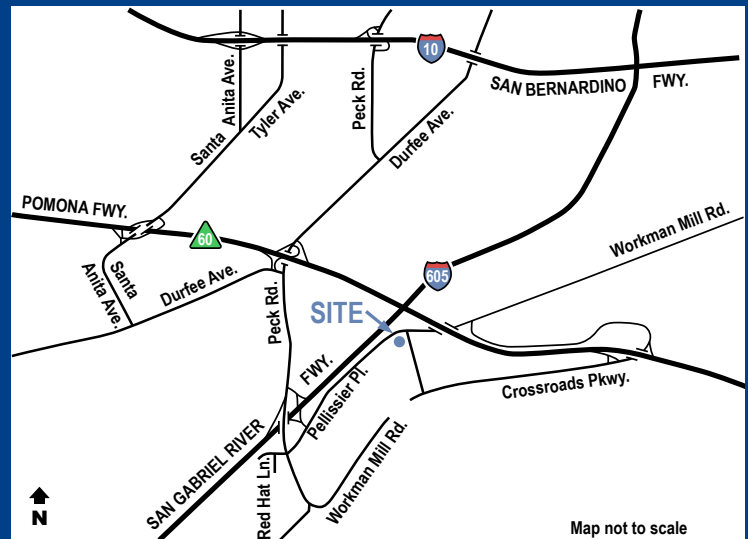
1 Ground Level

Parking: 41 spaces

Fenced Yard: Yes

Sprinklers: .33 G.P.M./3,000 square feet

Excellent freeway access to San Gabriel (605) & Pomona (60) freeways



For further information, contact:



Terry Baker

R.E. License #00711593 (CA)

(562) 948-4341

tbaker@majesticrealty.com

Louis Goldstein

R.E. License #01929146 (CA)

(562) 576-1611

lgoldstein@majesticrealty.com

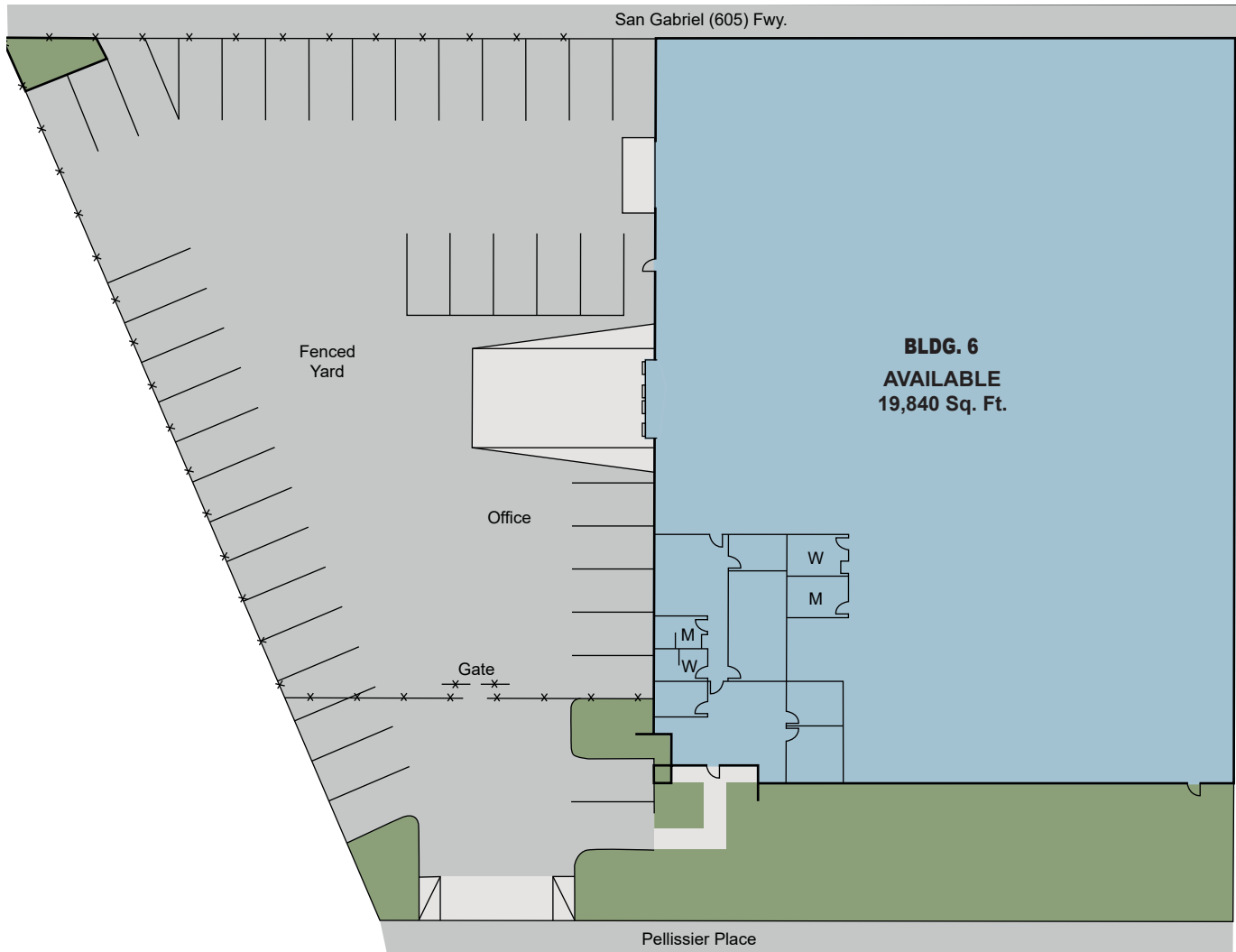
FOR LEASE

19,840 SQUARE FEET

2845 Pellissier Place, City of Industry, CA



**CROSSROADS
Industrial PARK**



For further information, contact:



Terry Baker
R.E. License #00711593 (CA)
(562) 948-4341
tbaker@majesticrealty.com

Louis Goldstein
R.E. License #01929146 (CA)
(562) 576-1611
lgoldstein@majesticrealty.com

