



NOW AVAILABLE

 56,970 SF / 10,139 SF Office

 2-Story Office
Elevator-Served

 Partially Climate-Controlled
Warehouse

 End-Cap Warehouse/
Distribution space

 9 docks, 1 drive-in

 30' Clear Height

Prime Office + Warehouse Property

Business Starts With Prime Location

 Oregon Business Park III
15625 SW 72nd Avenue, Portland, OR 97224

Northwest
Tenant Group





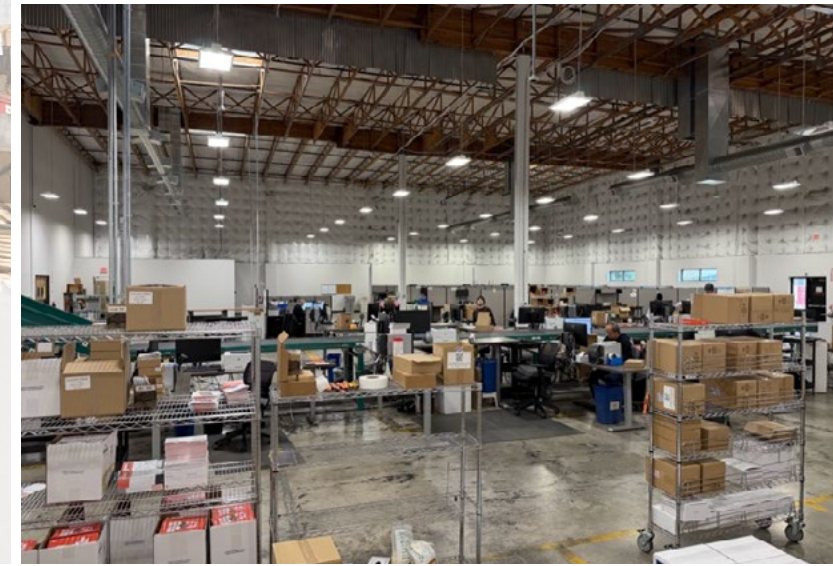
Multiple 3-phase electrical services (120/208V and 277/480V)



Lease Expiration: 9/30/2028



Asking Rate: \$0.80/SF NNN



For leasing information contact:



**Northwest
Tenant Group**

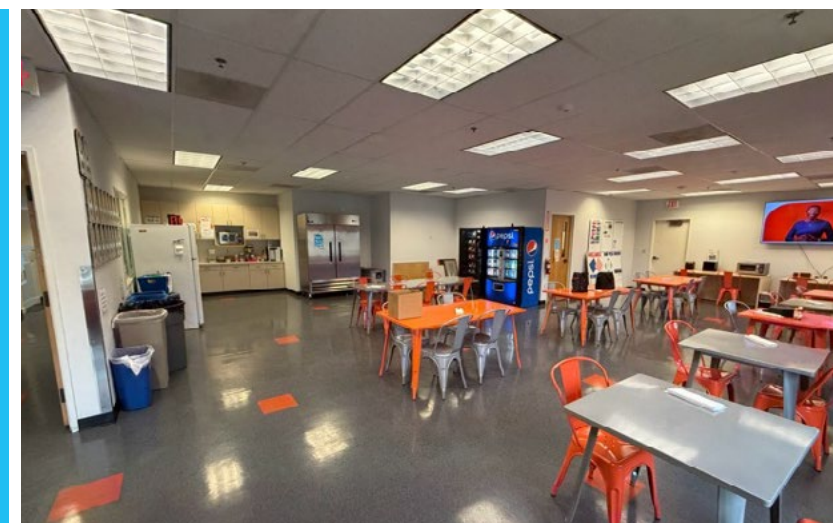
Stanford Scriven, SIOR

Founder & Principal
(503) 577-6699
stanford@nwtenantgroup.com

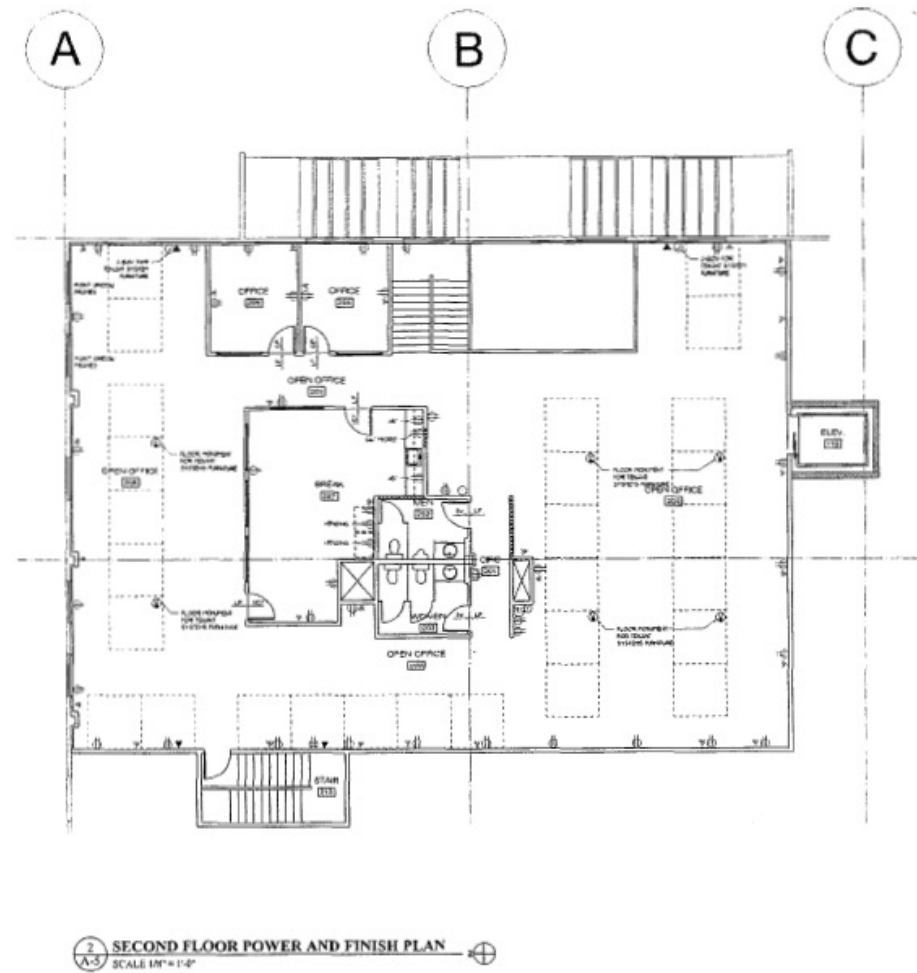
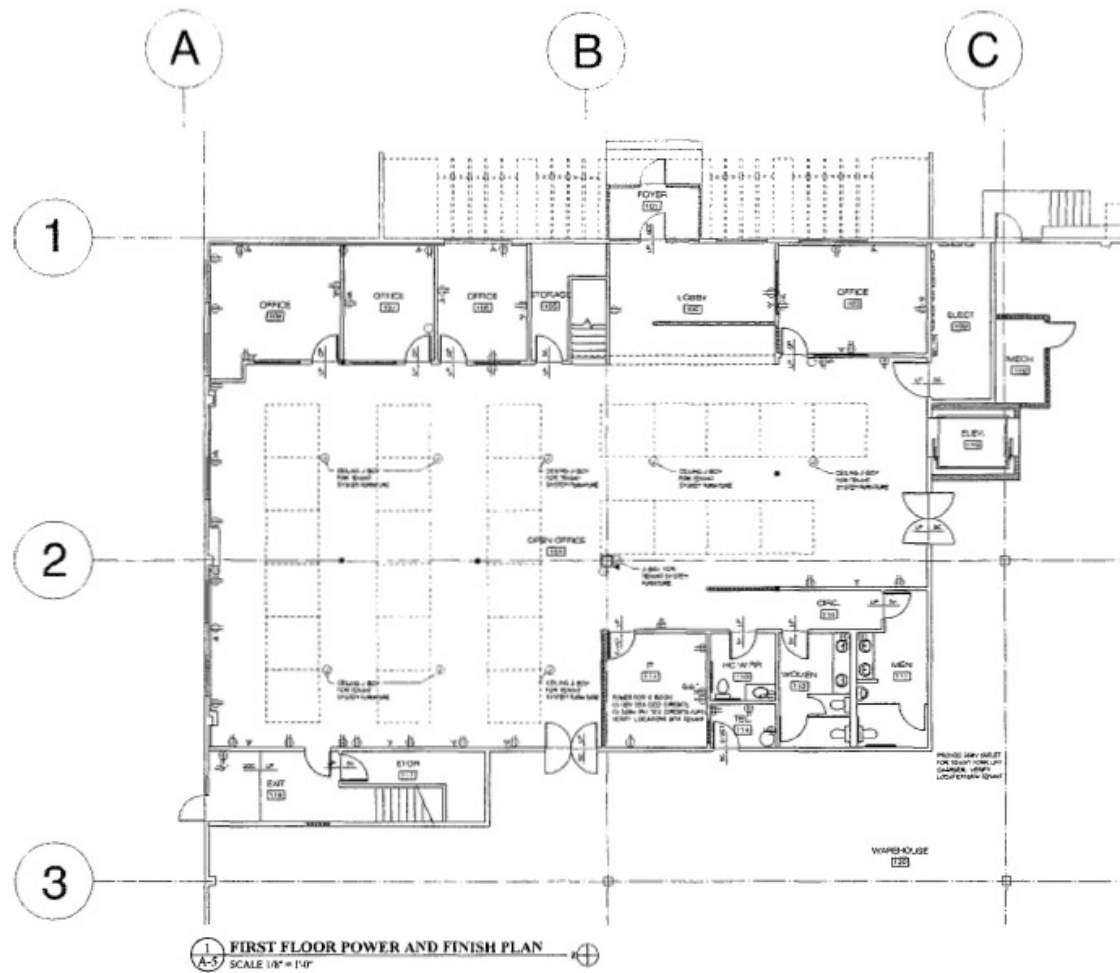
Becca Cameron

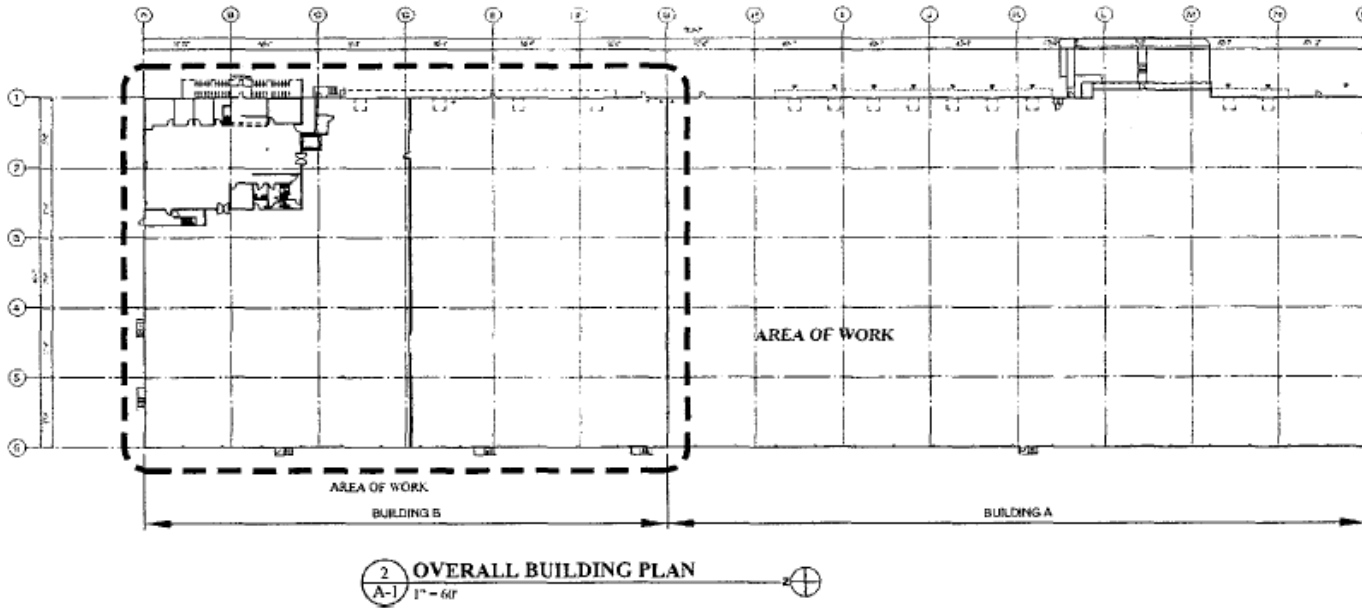
Vice President
(971) 222-5559
becca.cameron@nwtenantgroup.com

The information contained herein has been obtained from sources deemed reliable but has not been verified and no guarantee, warranty or representation, either express or implied, is made with respect to such information. Terms of sale or lease and availability are subject to change or withdrawal without notice.



10,139 SF Office on 2 Floors





For leasing information contact:

**Northwest
Tenant Group**

Stanford Scriven, SIOR

Founder & Principal
(503) 577-6699
stanford@nwtenantgroup.com

Becca Cameron

Vice President
(971) 222-5559
becca.cameron@nwtenantgroup.com

The information contained herein has been obtained from sources deemed reliable but has not been verified and no guarantee, warranty or representation, either express or implied, is made with respect to such information. Terms of sale or lease and availability are subject to change or withdrawal without notice.