

THE SHOPS AT RIVER CLUB
weis SUBWAY
ABC Domino's
CVS pharmacy Advance Auto Parts

PELHAM'S CORNER
FAMILY DOLLAR 7-ELEVEN

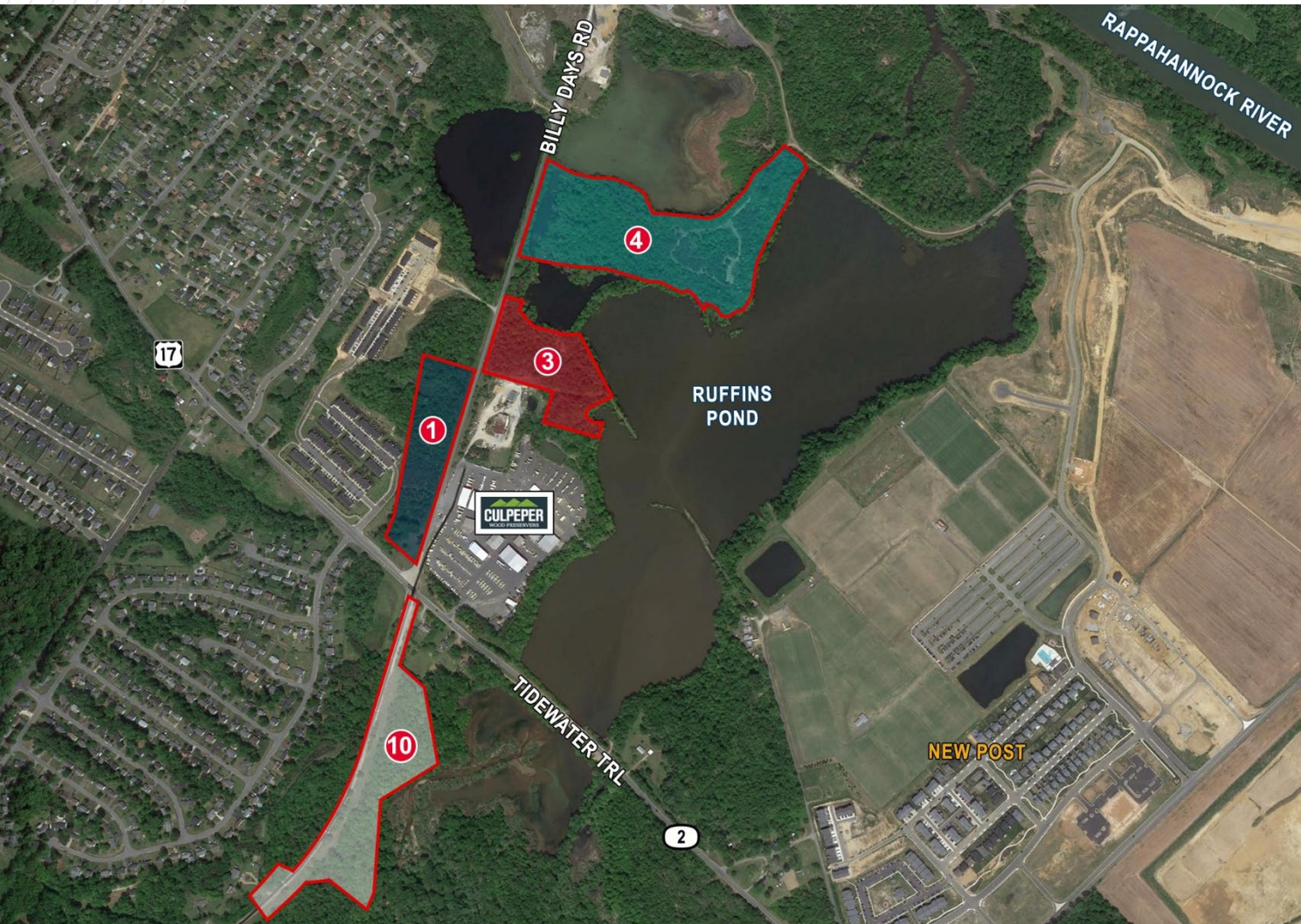
CULPEPER

FOR SALE | INDUSTRIAL LOTS

TIDEWATER TRAIL INDUSTRIAL HAUL ROAD LOTS FREDERICKSBURG, VIRGINIA



TIDEWATER TRAIL INDUSTRIAL HAUL ROAD LOTS FOR SALE



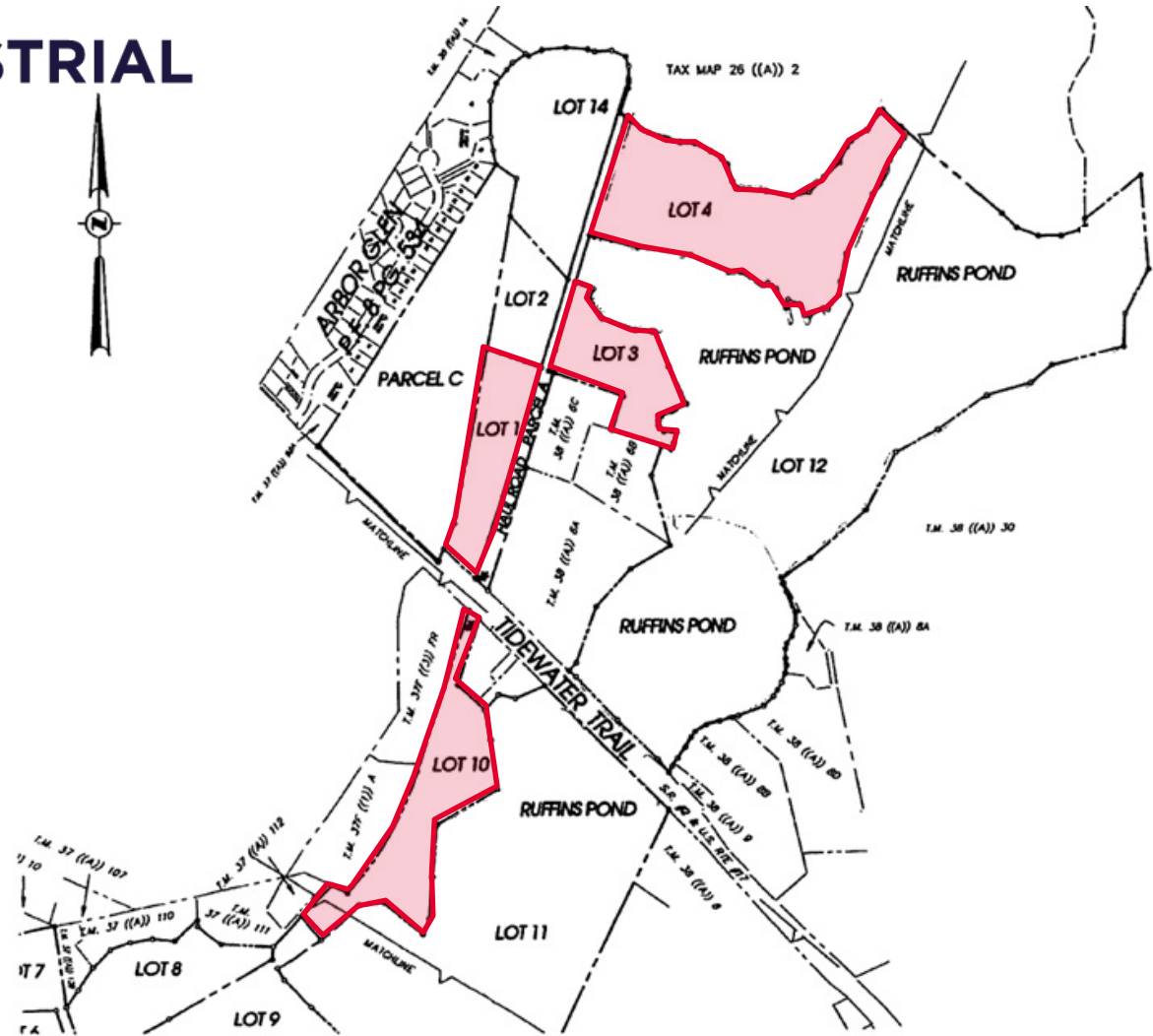
SPECIFICATIONS

Timing	All - Available immediately
Lot #1	Parcel 38-1-1
Size	3.5 Acres
Zoning	I-2
Asking Price	\$525,000
Lot #3	Parcel 38-1-1
Size	8.17 Acres (5.0 Acres Usable)
Zoning	I-2
Asking Price	\$750,000
Lot #4	Parcel 38-1-1
Size	23.62 Acres (13.6 Acres Usable)
Zoning	I-2
Asking Price	\$2,040,000
Lot #10	Parcel 38-1-1
Size	12.77 Acres (3.5 Acres Usable)
Zoning	I-2
Asking Price	\$525,000

TIDEWATER TRAIL INDUSTRIAL HAUL ROAD LOTS FOR SALE

PROPERTY FEATURES

- Four parcels available along Ruffins Pond on Route 2/ Tidewater Trail
- Easy access to Route 17 and Route 3 with close access to Interstate 95
- Power, water, gas, telephone, and cable are all available



FOR MORE INFORMATION, CONTACT:

VIRGIL NELSON, CCIM
Senior Vice President
540 322 4150
virgil.nelson@thalhimer.com

1125 Emancipation Hwy.
Suite 350
Fredericksburg, VA 22401
www.thalhimer.com

Independently Owned and Operated / A Member of the Cushman & Wakefield Alliance

Cushman & Wakefield | Thalhimer © 2025. No warranty or representation, express or implied, is made to the accuracy or completeness of the information contained herein, and same is submitted subject to errors, omissions, change of price, rental or other conditions, withdrawal without notice, and to any special listing conditions imposed by the property owner(s). As applicable, we make no representation as to the condition of the property (or properties) in question.

