



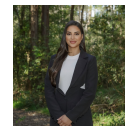
## Located within the heart of the Dural Trading Zone on New Line Road

Contact Agent

Located on the first floor, this fully fitted suite is offered with an extensive existing fit out, including:

- Reception desk
- Custom made workstation accommodating 3 + people
- Office desk located in the office adjoining the boardroom
- Boardroom table with eight (8) chairs
- Built-in open shelving and bench at the end of the annex area
- Kitchen with under bench and overhead cupboards
- Workbench with under bench cupboards
- Custom made built in joinery providing ample storage
- Reverse cycle air conditioning
- Internal Toilet & Shower

The suite is further enhanced by fully ducted reverse cycle air conditioning, as well as amenities including a shower and vanity.



**Noor Benjamin**  
Commercial Property  
Manager

### Amenities

- Offices

