



62-150 HOCKING MALL, LOGAN, OH 43138



FOR MORE INFO: 614.440.5767

Alec Miller | amiller@passovgroup.com



PASSOV GROUP
COMMERCIAL BROKERAGE

HOCKING MALL

PROPERTY HIGHLIGHTS

OFFERING HIGHLIGHTS

- Exceptional Outparcel, Endcap and In-line Retail Opportunities in the Heart of Hocking County!
- Conveniently Located with Easy Access from State Route 664!
- Serve the booming Hocking Hills market with over 6m+ visitors per year!
- Be Part of a Dynamic Retail Hub with Proposed Aldi, Tractor Supply, Kroger, Dairy Queen, CVS, and More Along the Main Corridor Serving Hocking Hills!
- **Available Space: 840 SF and 7,000 SF - 10,000 SF**

DEMOGRAPHICS

POPULATION	5 MILE	10 MILE	25 MILE
2024 Estimate	13,422	25,852	226,054
2029 Projection	12,261	24,745	232,811
BUSINESS	5 MILE	10 MILE	25 MILE
2024 Estimated Total Businesses	498	673	5,316
2024 Estimated Total Employees	5,349	6,393	59,521
INCOME	5 MILE	10 MILE	25 MILE
2024 Estimated Average Household Income	\$81,221	\$87,679	\$85,769
2024 Estimated Median Household Income	\$60,280	\$69,710	\$66,221

PRICING Call for Pricing



HOCKING MALL

ELEVATIONS



Existing Elevation



Proposed Elevation

New sconce light Typ.
on all columns

Paint existing trim
SW Folkstone

Paint existing walls
SW Armadillo

HOCKING MALL

ELEVATIONS



Existing Elevation



Proposed Elevation

New sconce light
Typ. on all columns

Paint existing trim
SW Folkstone

Paint existing walls
SW Armadillo

HOCKING MALL

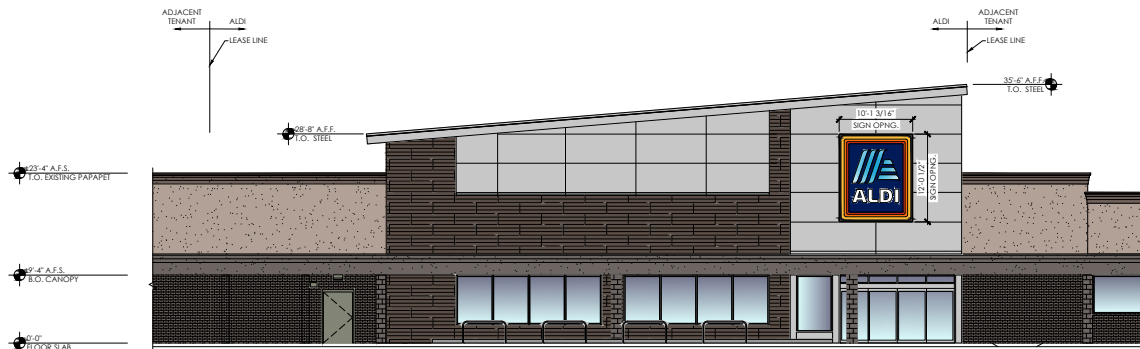
ELEVATIONS



3 Existing Street View (Chieftan Drive)
SCALE: NTS



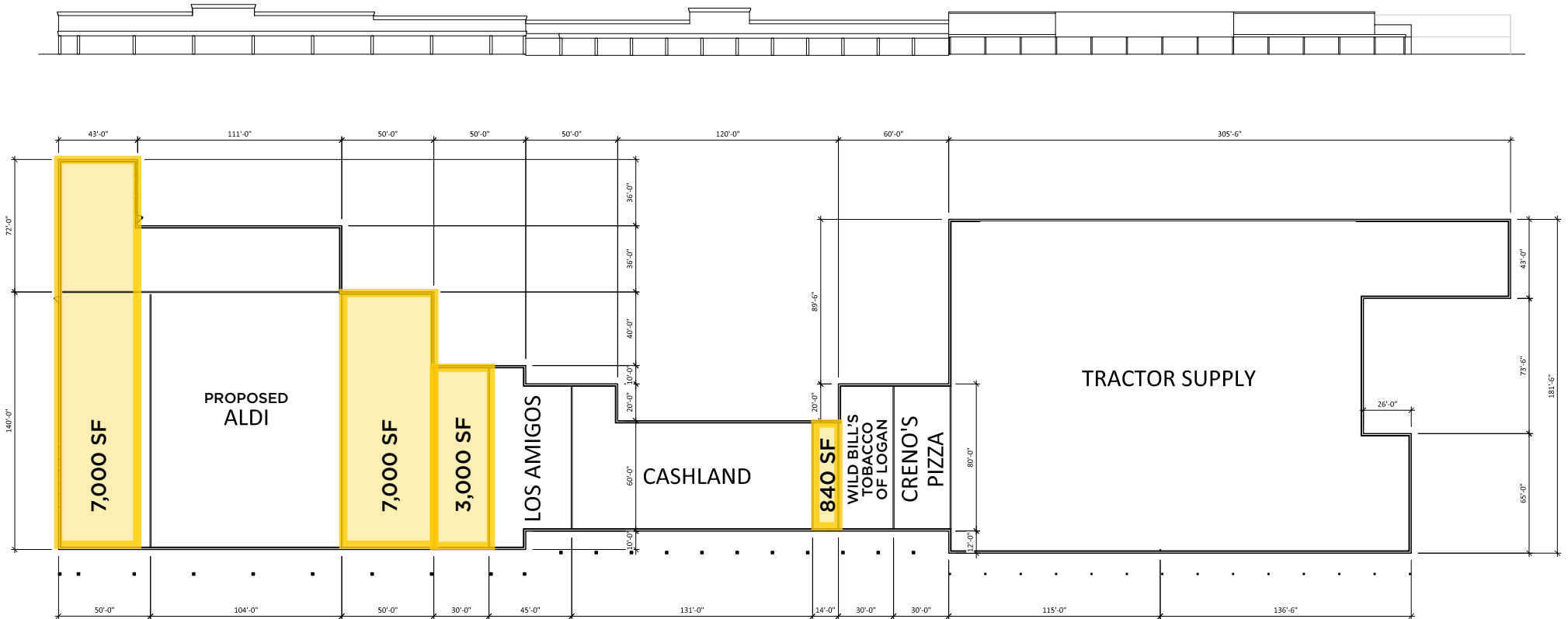
2 Existing Front Elevation (Chieftan Drive)
SCALE: 1/8" = 1'-0"



1 Proposed Front Elevation (Chieftan Drive)
SCALE: 1/8" = 1'-0"

HOCKING MALL

SITE PLAN



HOCKING MALL

TRADE AERIAL



HOCKING MALL

LOCATION OVERVIEW



Logan, Ohio, is a charming city nestled in the scenic Hocking Hills region, approximately 50 miles southeast of Columbus. Known for its natural beauty and outdoor recreational opportunities, Logan attracts visitors with its stunning landscapes, hiking trails, and state parks, including the famous Hocking Hills State Park. The city offers a welcoming small-town atmosphere with local shops, restaurants, and community events that enhance its appeal for residents and tourists alike.

The economy of Logan is primarily driven by tourism, retail, and small businesses. The city benefits from its strategic location near major highways, which facilitates easy access for visitors and businesses. Logan's local government actively supports economic development initiatives,

providing a conducive environment for business growth. The presence of educational institutions and healthcare services further contributes to the city's economic stability and quality of life.

Opportunities for commercial real estate in Logan are promising, particularly in sectors catering to tourism and local services. The downtown area presents opportunities for retail spaces, restaurants, and hospitality ventures, capitalizing on the steady influx of tourists. Additionally, there are possibilities for office spaces and small industrial facilities to support local businesses. With its strategic location, supportive business environment, and growing tourism industry, Logan offers attractive prospects for commercial real estate investment.

