



938 SF

# Harborgate Shopping Center

MARINA BAY PARKWAY  
RICHMOND | CA

FOR INFORMATION, CONTACT:

**BRIAN ALT**

Senior Leasing Manager  
916-200-9446  
balt@crosspointrealty.com  
CA DRE #01504949

**CARTER HEMMING**

chemming@crosspointrealty.com  
CA DRE #01123464

**KATHY DEOCHOA**

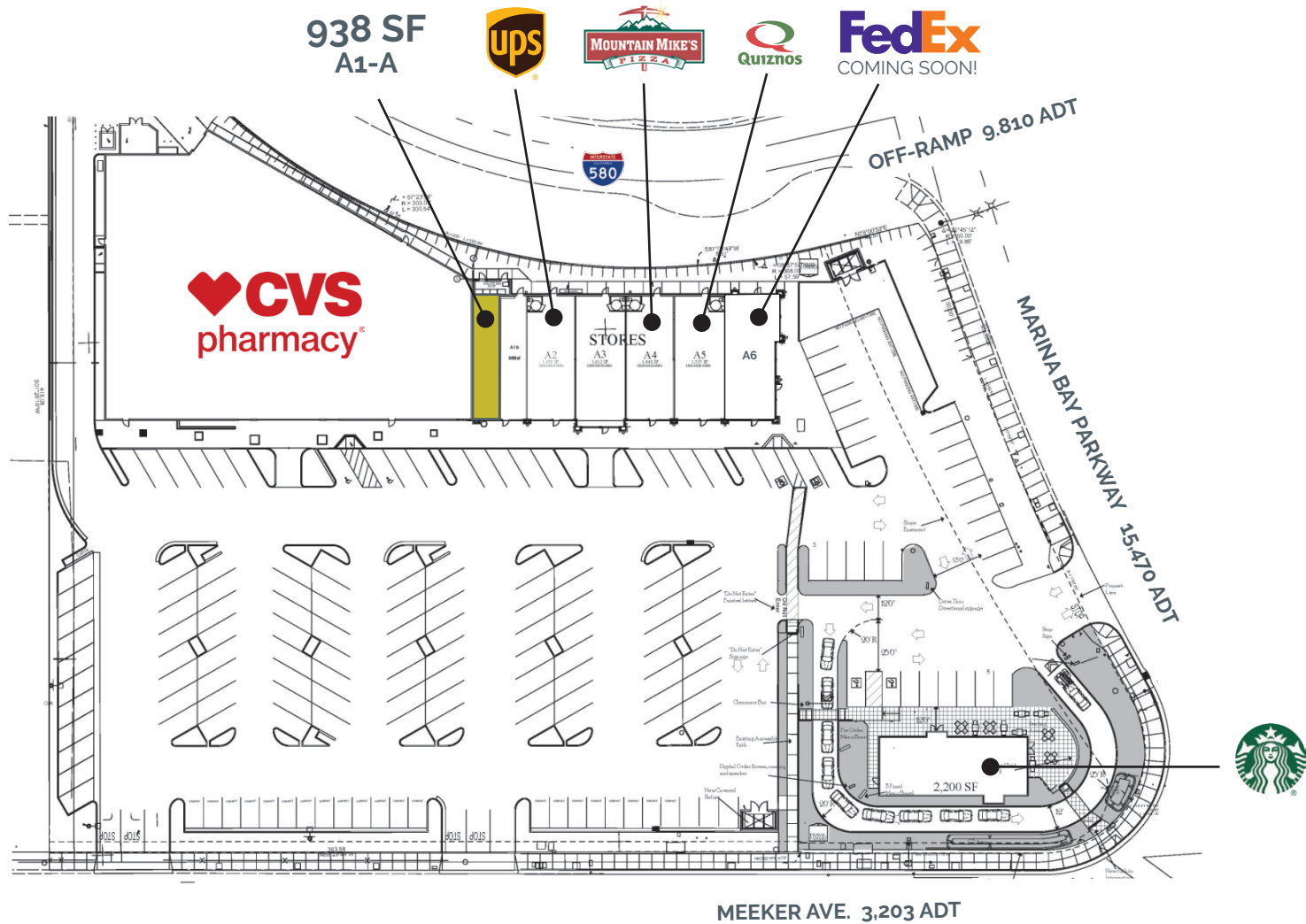
kdeochoa@crosspointrealty.com  
CA DRE #01871554



SUITE	SF	RENT	NNN
A1-A	938	Inquire	\$13.82

- 938 SF Shop Space Available
- New Starbucks Drive-Thru - Now Open!
- NWC of I-580 (97,786 ADT) and Marina Bay Parkway





# Harborgate Shopping Center

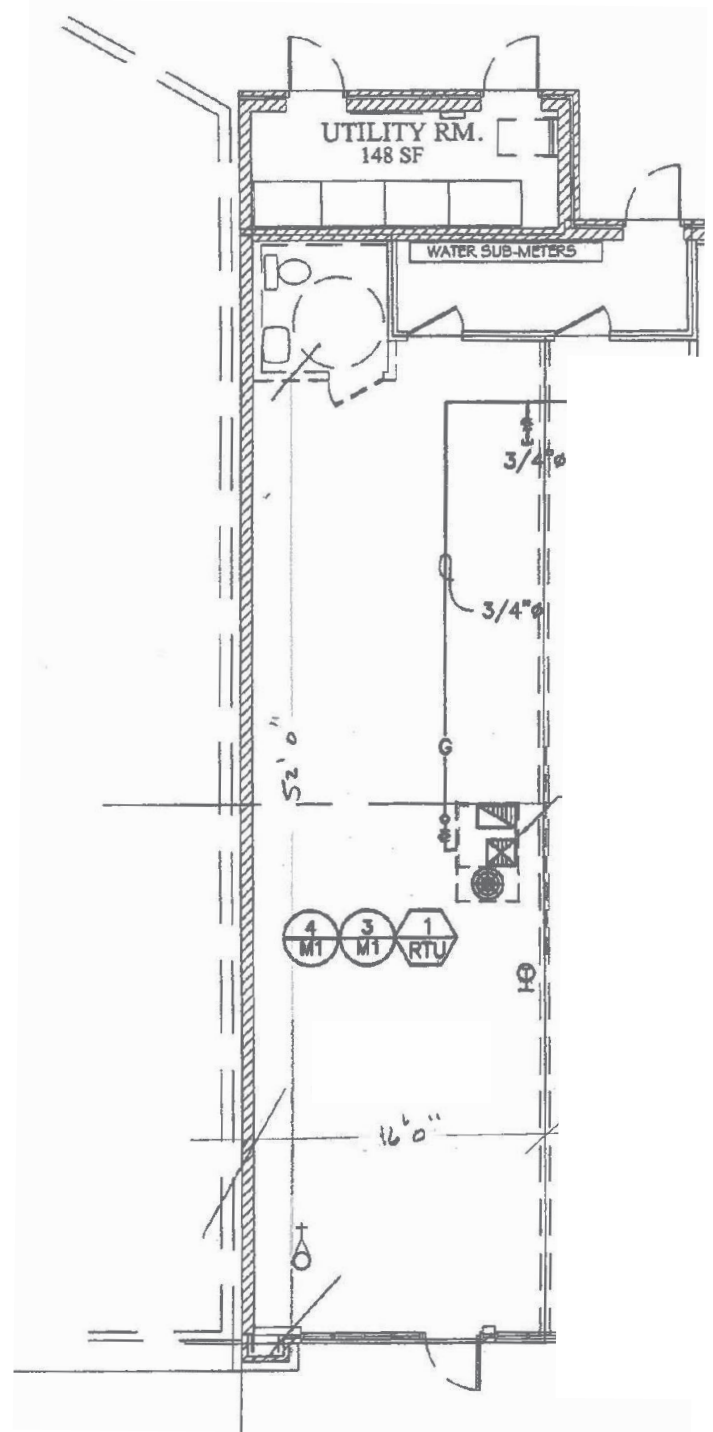
= AVAILABLE

SUITE	TENANT	SIZE			
A1-a	AVAILABLE	938 sf	A4	Mountain Mike's	1,352 sf
A1-b	Regina Salon	958 sf	A5	Quiznos	1,369 sf
A2	UPS Store	1,006 sf	A6	FedEx (Coming Soon!)	1,705 sf
A3	La Lupita Mexican Rest.	1,750 sf	PAD	Starbucks	2,200 sf

SUITE A1-A



AVAILABLE  
SUITE A1-A  
938 SF





KENNEDY HIGH  
825 students



Your Bay Area Flooring Authority  
**THE FLOORSTORE**

**University of California Berkeley**  
~170 acres  
research, testing for students/faculty

**Columbia**

Marina Bay Yacht Harbor  
~850 boat slips

Richmond Ferry Terminal  
270K annual riders

**Harborgate Shopping Center**

California Department of Public Health  
+1,200 employees



TO SAN RAFAEL

TO EL CERRITO

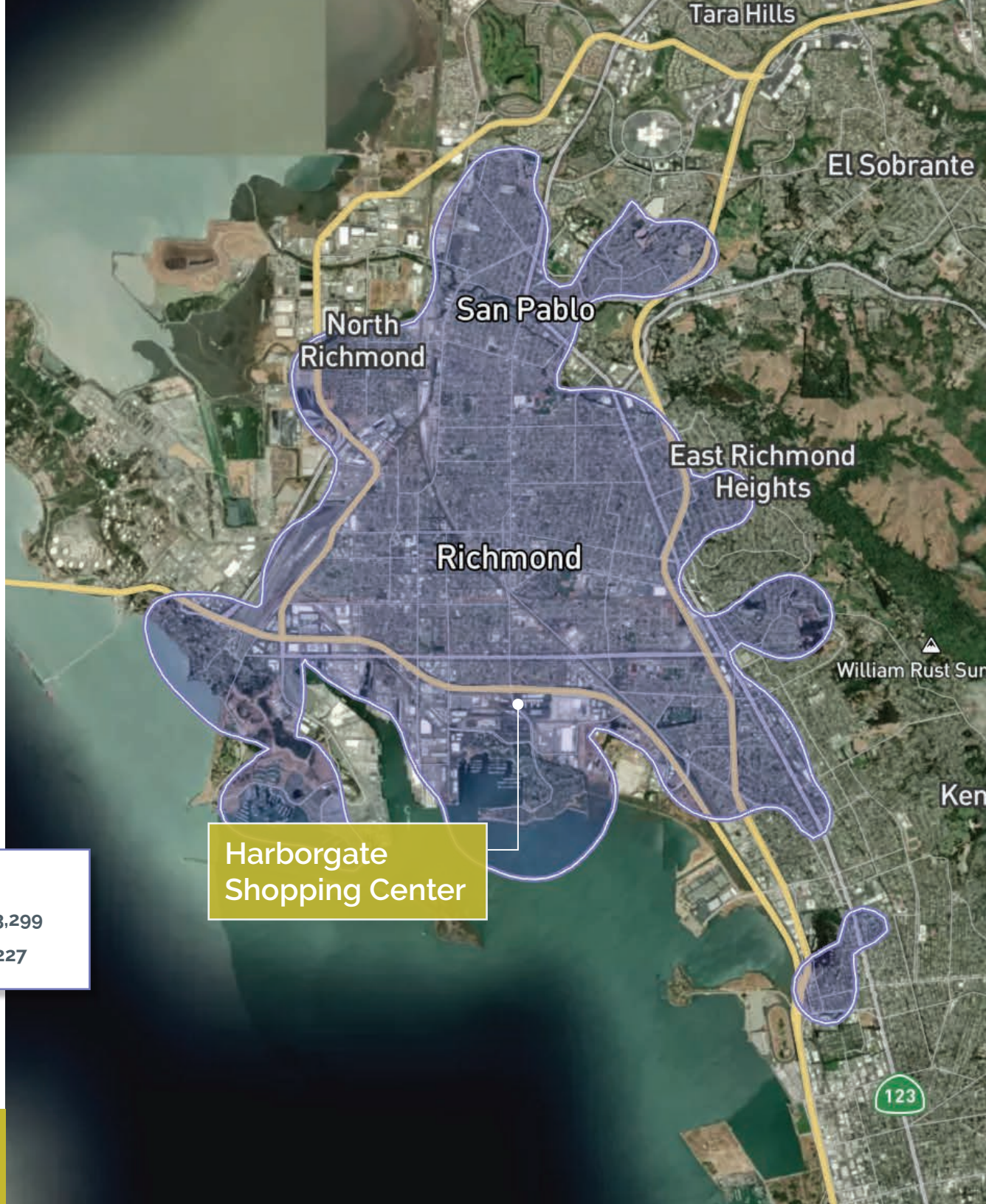
PRINCIPAL TRADE AREA

# Highlights

Harborgate Shopping Center is positioned conveniently off of HWY 580 (97,786 ADT), servicing both AM & PM commutes, and the dense surrounding residential homes of Marina Bay.

- Anchored by CVS, this 35,000 square foot convenience center is the gateway to the bay-side community of Marina Bay
- The center boasts some of the areas better quality restaurants and services

<b>PRINCIPAL TRADE AREA</b>	
<b>AVG. HH INCOME</b>	<b>\$103,299</b>
<b>POPULATION</b>	<b>127,227</b>





**CROSSPOINT REALTY SERVICES, INC.**

415-288-6888

[www.crosspointrealty.com](http://www.crosspointrealty.com)

FOR INFORMATION, CONTACT:

**BRIAN ALT**

Senior Leasing Manager

916-200-9446

[balt@crosspointrealty.com](mailto:balt@crosspointrealty.com)

CA DRE #01504949

**CARTER HEMMING**

[chemming@crosspointrealty.com](mailto:chemming@crosspointrealty.com)

CA DRE #01123464

**KATHY DEOCHOA**

[kdeochoa@crosspointrealty.com](mailto:kdeochoa@crosspointrealty.com)

CA DRE #01871554