



CBRE

Calgary's Not-For-Profit Hub

For Lease

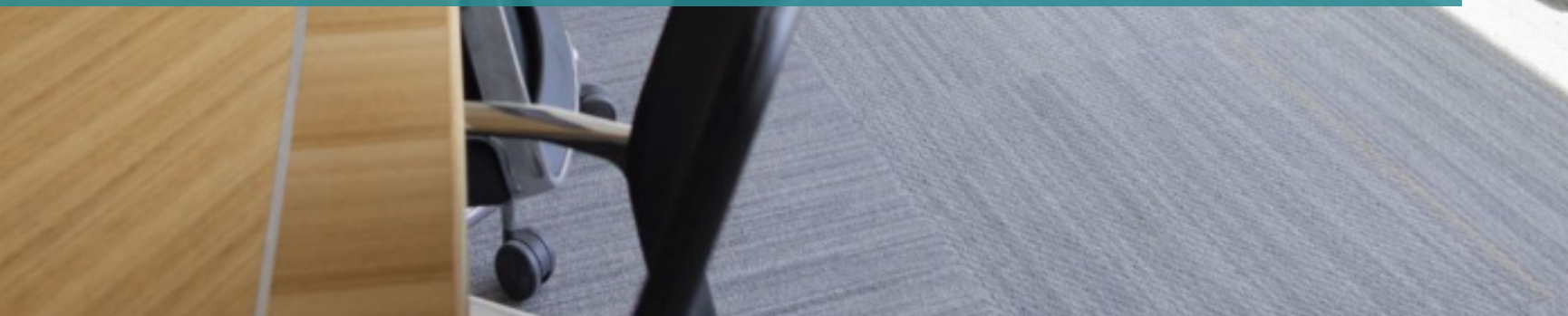
the kahanoff centre



community building



The Kahanoff Centre is a unique valuable community resource, providing affordable office and meeting spaces for charitable and non-profit organizations. Situated in, Mohkinstis, Calgary, Alberta, Canada, our guiding principle is Community Building, and our tenant partners are dedicated organizations that work to fulfill their missions daily. The Kahanoff Centre is a Class A, 12-storey, dual-tower structure ideally located in Calgary's Beltline and in close proximity to downtown, the Victoria Park/Stampede LRT Station, and various amenities. It also offers a secure, heated underground parking facility, on-site security, and daycare services.



Community Centric

Our tenant partners enjoy the vibrant, walkable neighborhood of Kahanoff, which offers convenient access to a variety of restaurants, food halls, and hotels. A standout feature of our property is the wealth of opportunities created among community organizations.

The Kahanoff Centre team actively fosters collaboration through engaging Lunch and Learn events, Leaders' Forums, and various social gatherings. For those looking for a creative break from the workday, Decidedly Jazz Danceworks provides year-round classes and exceptional artistic performances right within The Kahanoff Centre, showcasing its gallery, studios, and theatre.



Feature Amenities

- Churchill Daycare
- Main floor conference room
- Access to a 220-seat theatre
- Outstanding location with excellent vehicle, transit, and cycle access
- Pedestrian and LRT access
- Sandwich shop
- Co-working spaces
- A community network of not-for-profits





the kahanoff centre



community building

BUILDING ADDRESS 105 12 Avenue SE

**YEAR BUILT/
RENOVATED** 2016

BUILDING SIZE 211,582 SF

SPACE AVAILABLE
500: 10,423
600: 10,429
700: 21,078
980: 2,608

BASIC RENT Market

OPERATING COSTS \$11.36 PSF (2026 EST)

AVAILABLE June 1, 2026

PARKING 18 Stalls

PARKING RATE \$300.00 per stall



The Kahanoff Centre is home to numerous community builders including **Calgary Counselling Centre, Calgary Foundation, United Way, Vecova, the Nonprofit Chamber, Green Calgary, the Burns Memorial Fund and many more.**



Home to many of Calgary's leading non-profit organizations



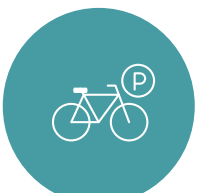
Surrounded by endless food, drink and lifestyle amenities



A 7-minute walk from the Victoria Park LRT Station

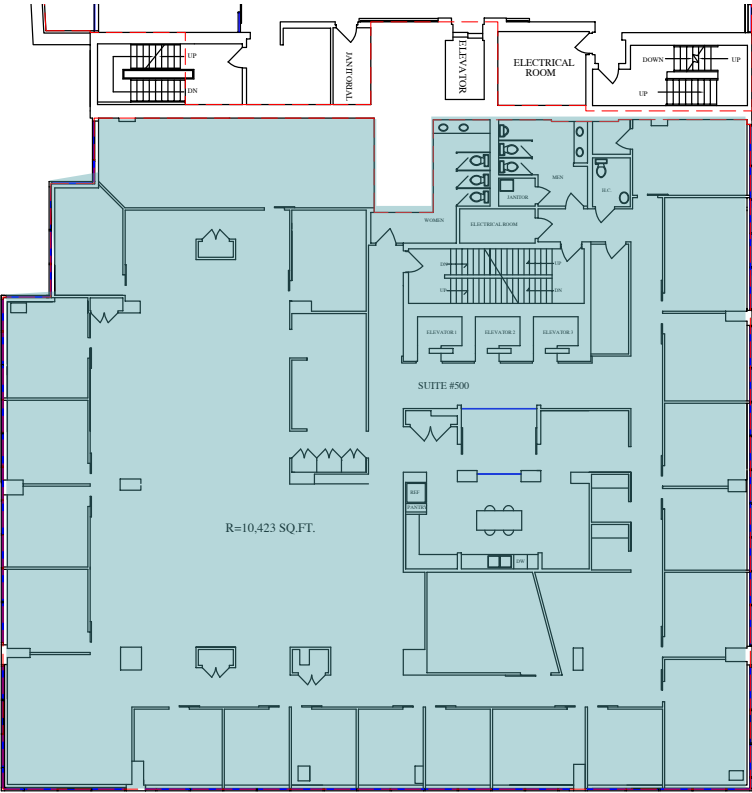


Shared Meeting Rooms and Conference Centres

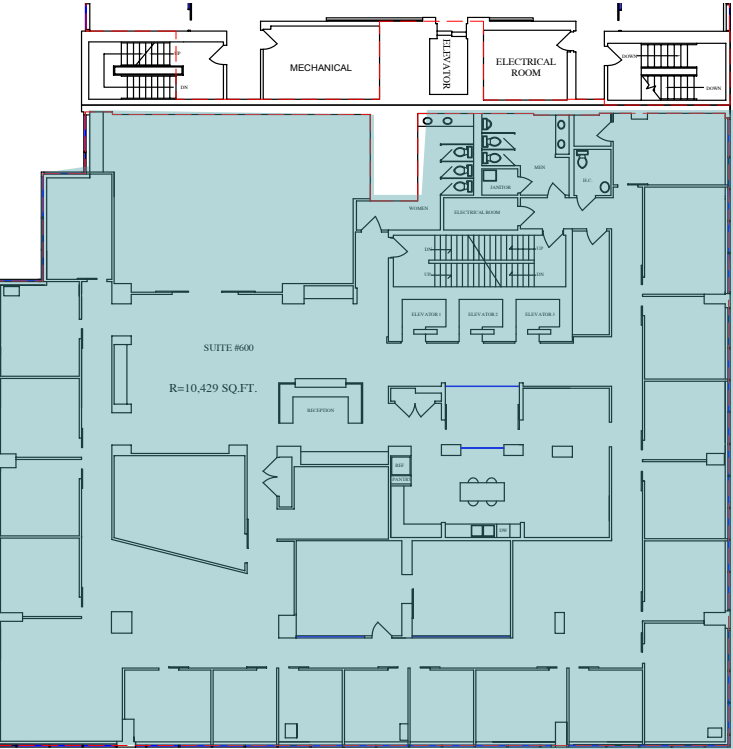


Secured Bicycle Parking

Suite 500: 10,423 SF



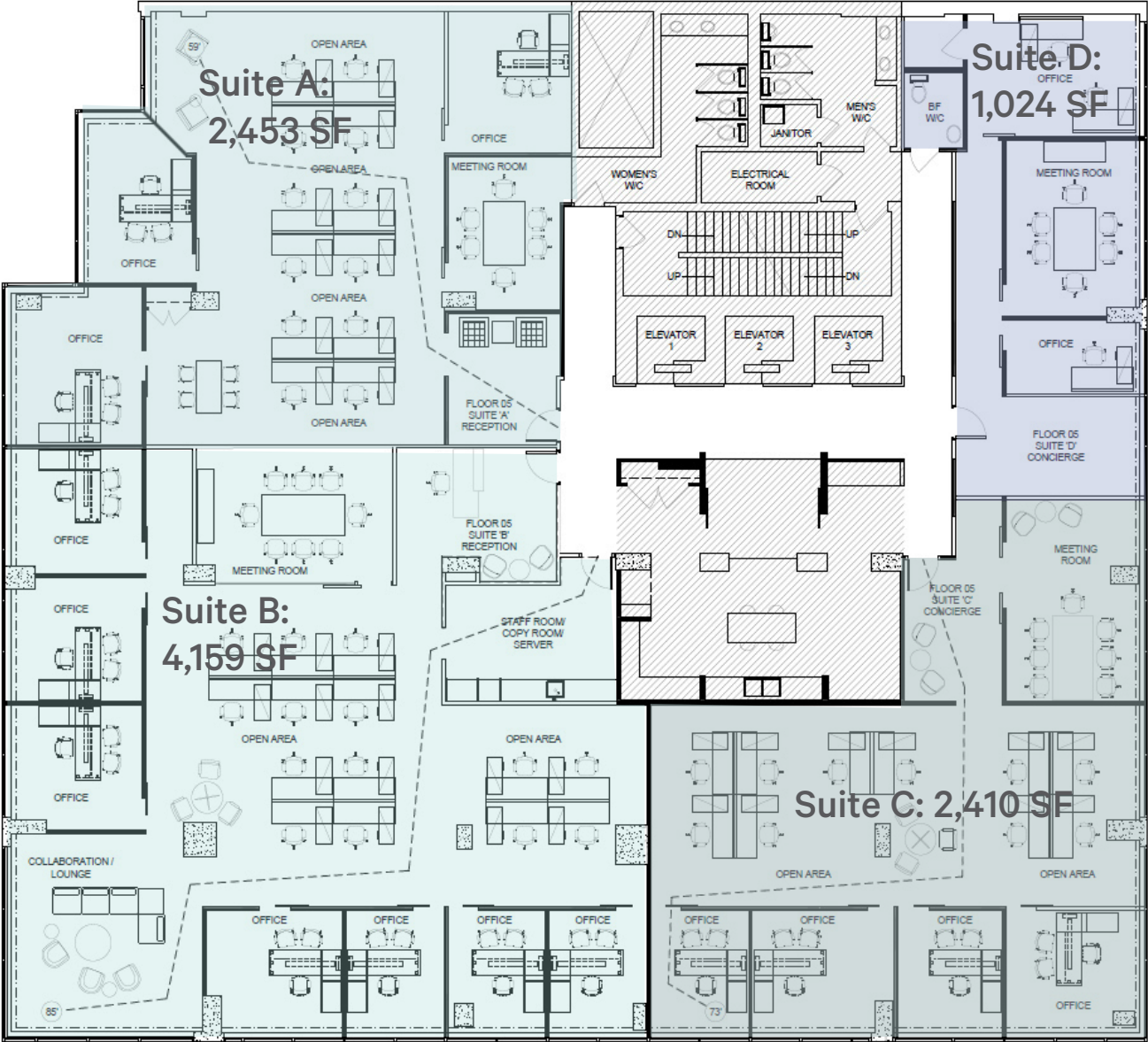
Suite 600: 10,429 SF



VIRTUAL TOUR

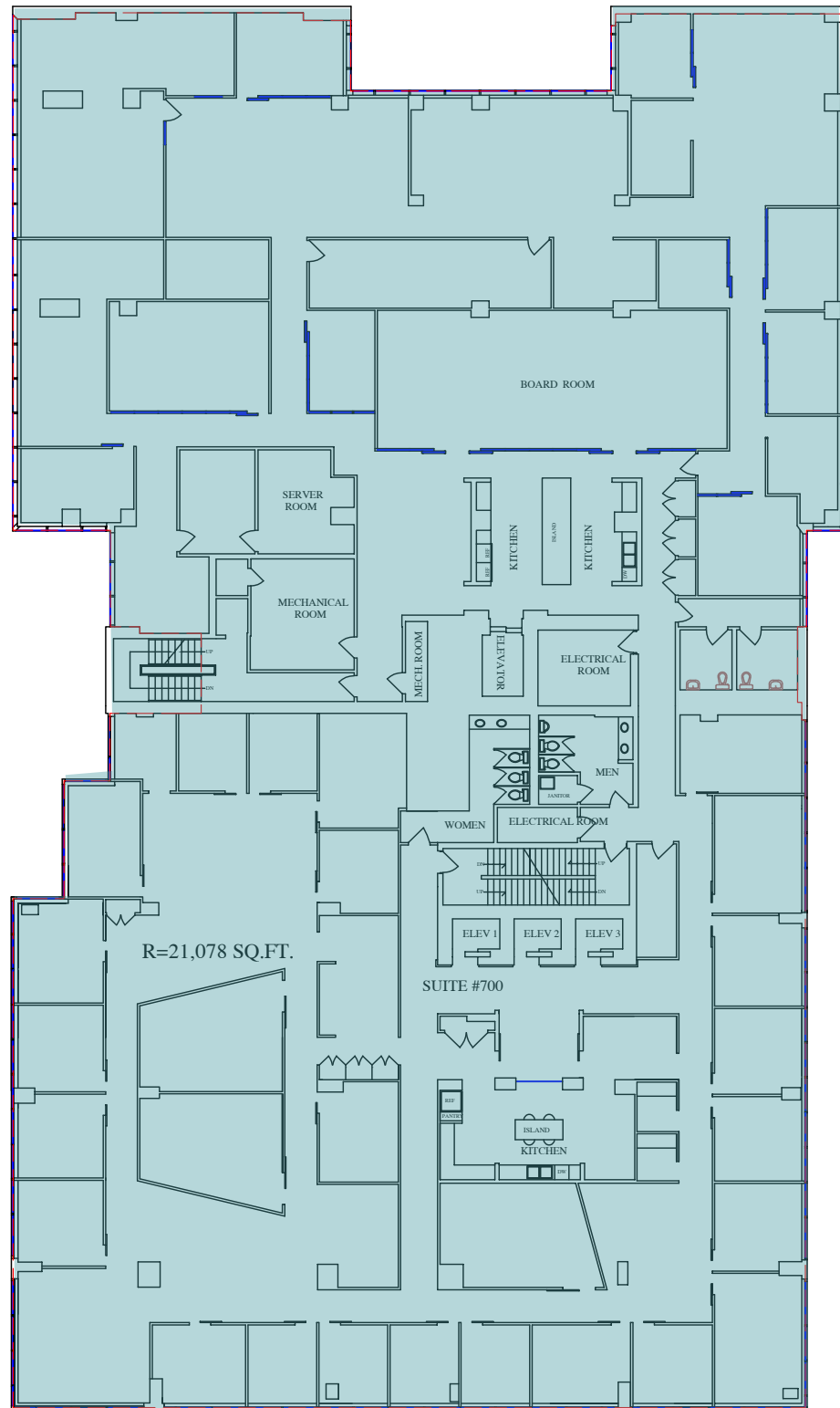
Suite 500 Demising Options

- Suite A: 2,453 SF
- Suite B: 4,159 SF
- Suite C: 2,410 SF
- Suite D: 1,024 SF

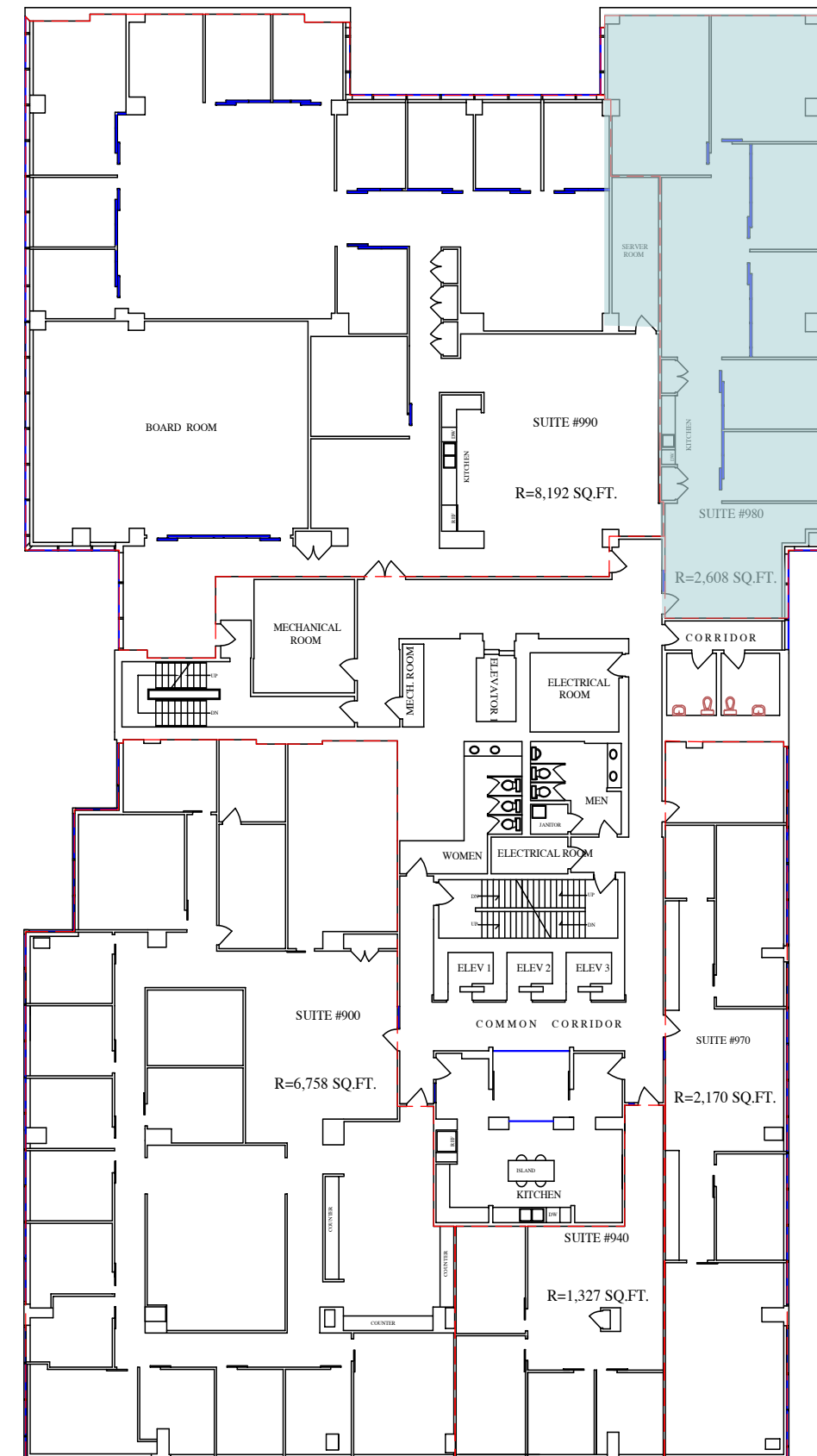


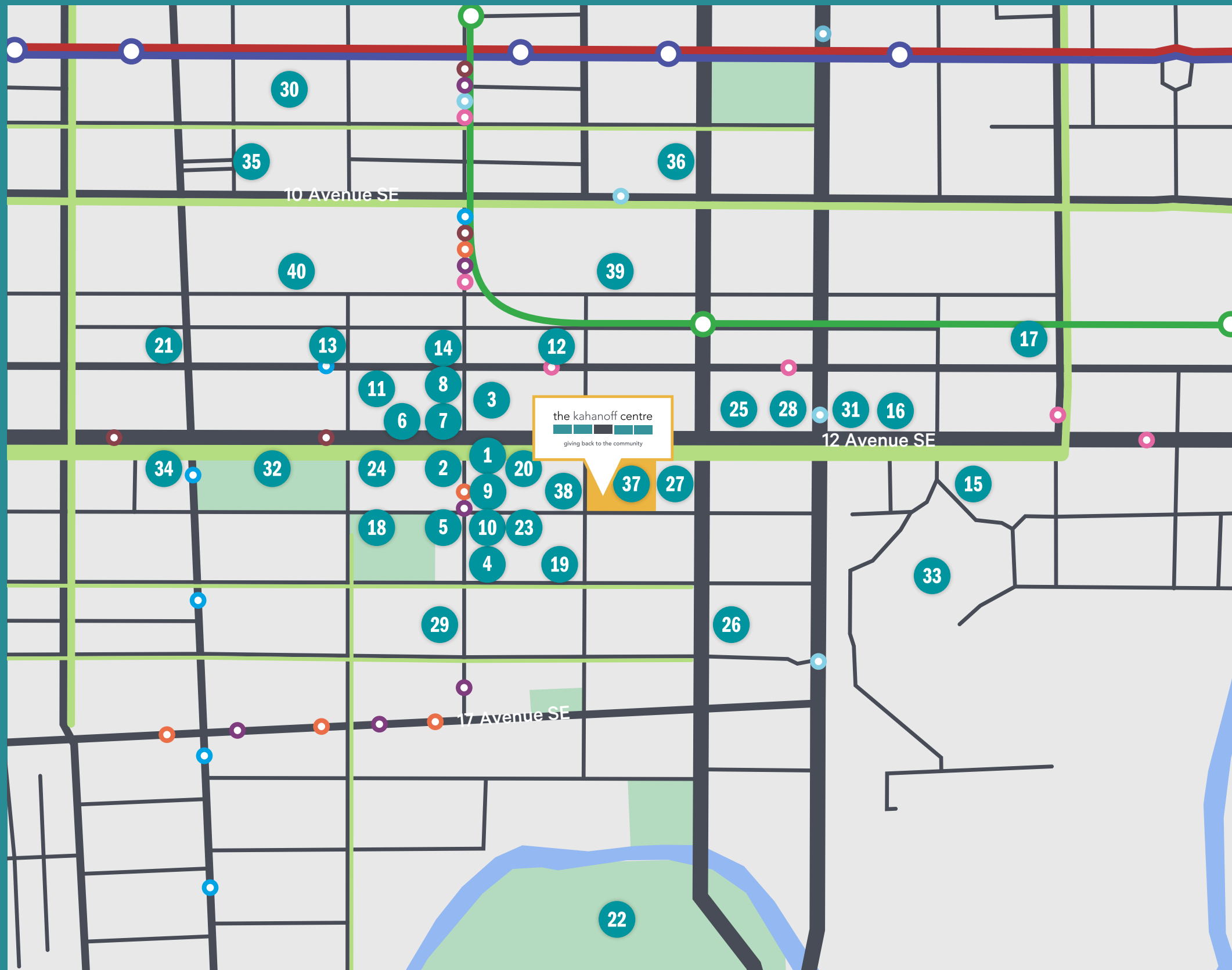
Suite 700: 21,078 SF

VIRTUAL TOUR



Suite 980: 2,608 SF





LEGEND

Kahanoff Centre

Commuting

- Roadways
- Bike Lanes
- Red Line / Blue Line LRT
- Future Green Line LRT

Bus Stops

- Route 6 - Killarney / 26 Ave SW
- Route 7 - Marda Loop South
- Route 10 - City Hall / Southcentre
- Route 24 - Ogden
- Route 90 - Bridgeland / UofC
- Route 449 - Eau Claire / Parkhill

Restaurants

- Yellow Door Bistro
- Sweet Relief Pastries
- Starbucks
- Proof Cocktail Bar
- First Street Market
- St. James Corner Irish Pub
- Ten Foot Henry
- Leopold's Tavern
- Deville Coffee
- The Beltliner
- Central Taps + Food
- Pizza Italiano
- Vintage Chophouse and Tavern
- Foreign Concept
- Cardinale
- ZCREW Cafe
- Village Ice Cream

Fitness

- Haultain Tennis Courts
- HotShop Hot Yoga
- Anytime Fitness
- F45 Training
- MNP Community & Sports Centre

Accommodations

- Hotel Arts
- Fairfield Inn by Marriott

Shopping/Retail

- Sunterra Market
- Shoppers Drug Mart
- Esso Gas Station
- 5 Vines Wine
- O'Connors
- The CORE

Parks

- East Victoria Park
- Central Memorial Park

Landmarks

- BMO Centre
- Sheldon M. Shumir Health Centre
- Calgary Tower
- Glenbow Museum

Childcare

- Kids @ Churchill Park Child Care
- Kido Care

+15 Access

- Palliser Tower Parkade
- City Centre Parkade

the kahanoff centre



community building

STUART WATSON

Senior Vice President
403.750.0540
stuart.watson@cbre.com

KATIE SAPIEHA

Senior Vice President
403.750.0529
katie.sapieha@cbre.com

SARA ATCHISON

Associate
403.750.0526
sara.atchison@cbre.com