

900 Canterbury Place

Escondido



CBRE

Availability

Suite	Square Footage	Available	Rate
330	1,639 RSF	Now	\$2.70/SF + E & J

Property Highlights

- ◇ Common Area Conference Room
- ◇ Exposure to 180,000+ vehicles per day
- ◇ Direct access to I-15 and excellent access to SR-78
- ◇ 4.0/1,000 Parking
- ◇ High-image building

Plentiful Retail Amenities, Restaurants and Services within a 2-Mile Radius



Nearby Restaurants: Vintana Wine + Dine, Suzy Q's Diner, Mikko Sushi, Cuscatalan Salvadorean Cuisine, Dominics Italian Gourmet, Epic Wings N' Things, Chilli's Grill & Bar, In-N-Out Burger, Olive Garden, Chick-fil-A, Raising Canes, Starbucks, Board & Brew, and more.



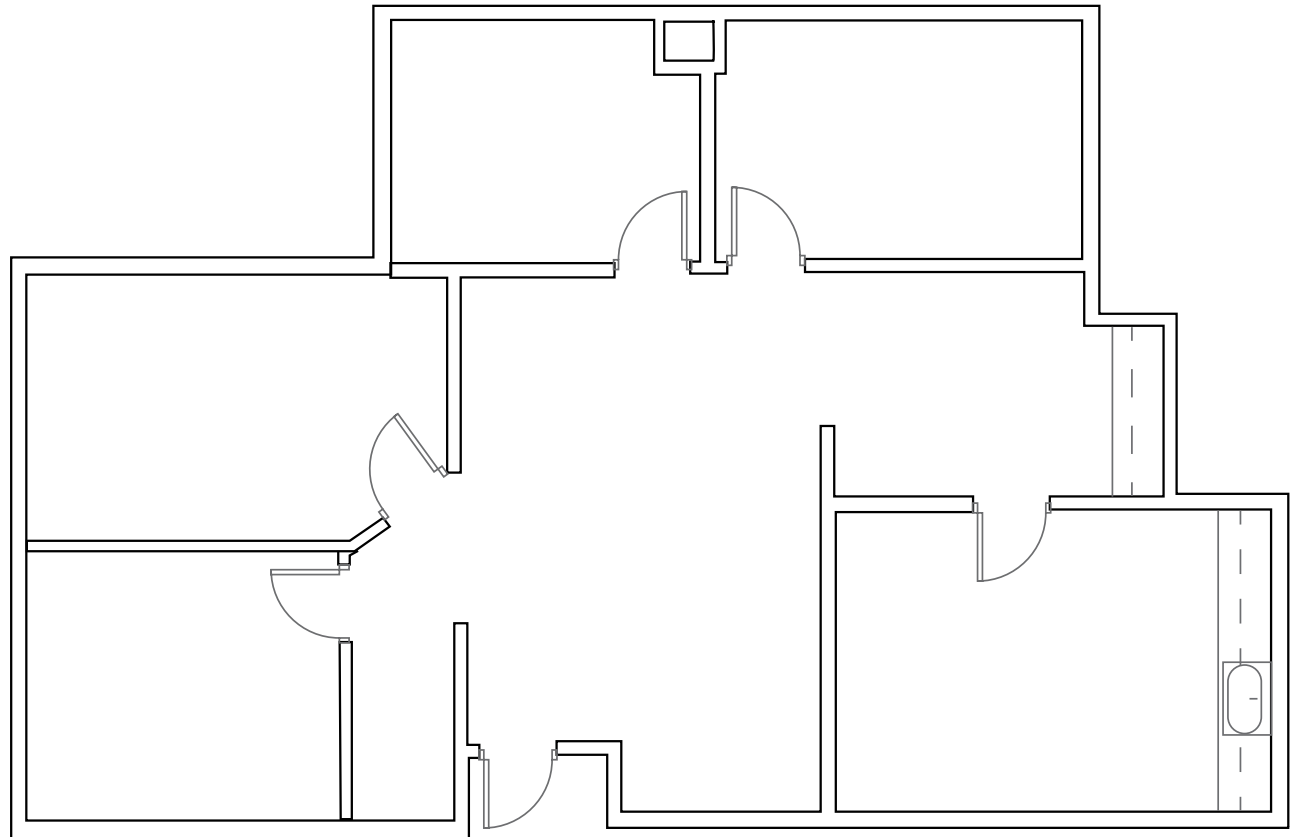
Nearby Grand Avenue, Downtown Escondido (Daydream, Urban Barn, Antique Mall, A Delight of France, Kettle on Grand, Filippi's Pizza Grotto, Streetlife Clothing, The Grand Tea Room, EscoGelato, and many more)

Suite 330

● 1,639 RSF

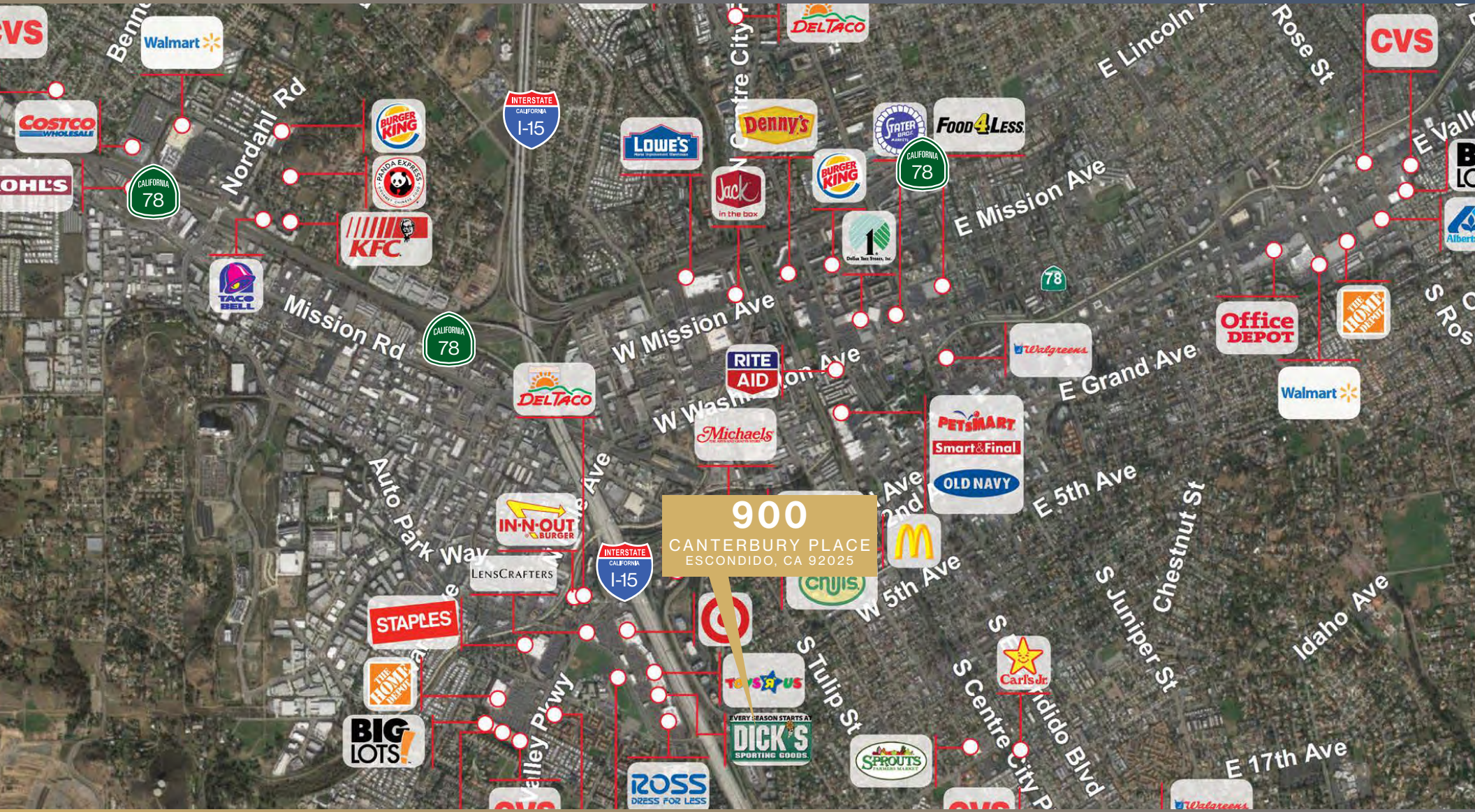
● \$2.70/SF + E&J

● Available Now





Location



900 Canterbury Place

Escondido



CONTACTS

Matty Sundberg

Senior Vice President

+1760 845 5410

matty.sundberg@cbre.com

Lic. 01257446

Bob Cowan

First Vice President

+1760 840 7664

bob.cowan@cbre.com

Lic. 01838109

CBRE

© 2026 CBRE, Inc. All rights reserved. This information has been obtained from sources believed reliable but has not been verified for accuracy or completeness. CBRE, Inc. makes no guarantee, representation or warranty and accepts no responsibility or liability as to the accuracy, completeness, or reliability of the information contained herein. You should conduct a careful, independent investigation of the property and verify all information. Any reliance on this information is solely at your own risk. CBRE and the CBRE logo are service marks of CBRE, Inc. All other marks displayed on this document are the property of their respective owners, and the use of such marks does not imply any affiliation with or endorsement of CBRE. Photos herein are the property of their respective owners. Use of these images without the express written consent of the owner is prohibited.