
FOR LEASE

MEDICAL SPACE AVAILABLE FOR LEASE IN CHANDLER, AZ

2175 N. ALMA SCHOOL RD.
CHANDLER, AZ 85224



MATT ZACCARDI
D: 480.966.7625
M: 602.561.1339
Mzaccardi@cpiaz.com



COMMERCIAL PROPERTIES INC.

Locally Owned. Globally Connected. CORFAC INTERNATIONAL

TEMPE: 2323 W University Drive, Tempe, AZ 85281 | 480.966.2301
SCOTTSDALE: 8767 E Via de Commercio, Suite 101, Scottsdale, AZ 85258 | www.cpiaz.com

MEDICAL SPACE AVAILABLE FOR LEASE



About the Property

ADDRESS

2175 N Alma School Rd
Chandler, AZ 85224

BUILDING SIZE

±11,579 SF

YEAR BUILT

1986

PARKING RATIO

7:1,000

FRONTAGE

N Alma School Rd

PARCEL

302-27-483

TENANCY

Multiple

The information contained herein has been obtained from various sources. We have no reason to doubt its accuracy, however, J & J Commercial Properties, Inc. has not verified such information and makes no guarantee, warranty or representation about such information. The prospective buyer or lessee should independently verify all dimensions, specifications, floor plans, and all information prior to the lease or purchase of the property. All offerings are subject to prior sale, lease, or withdrawal from the market without prior notice. 04.23.26

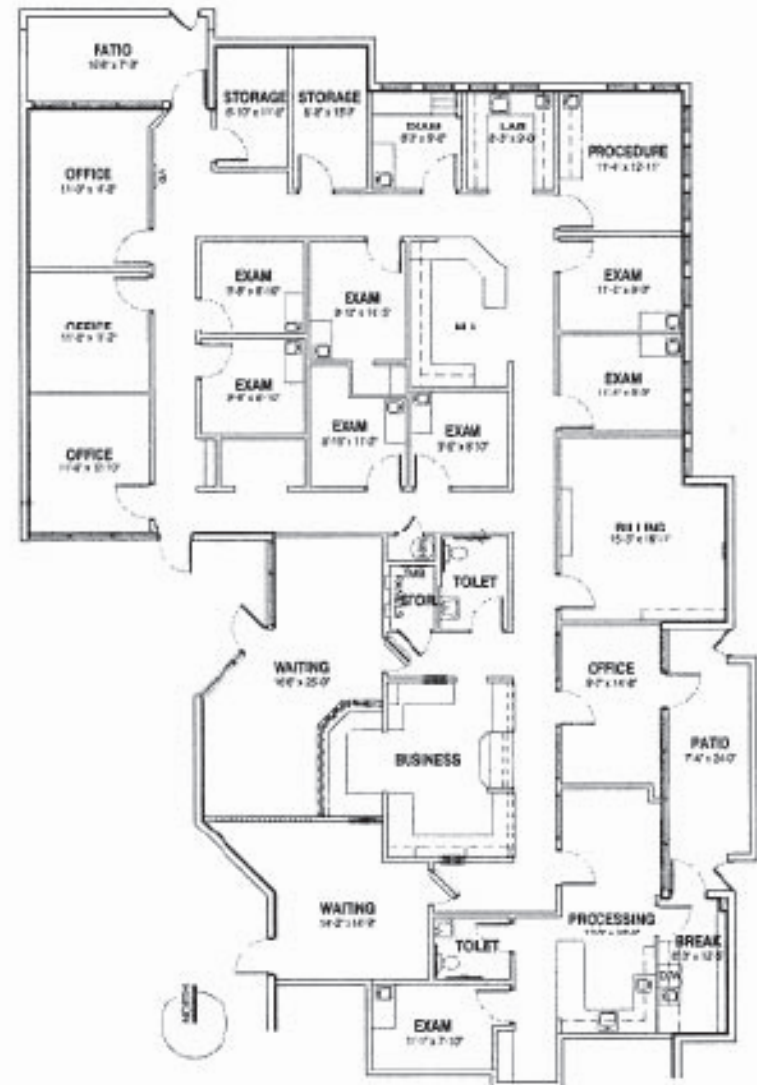
Suite 104

±4,549 SF | \$18.00 NNN + \$5.73 NNN's

Layout includes:

- Reception
- Admin Area,
- 2 Waiting Room
- 10 Plumbed Exam Rooms
- Conference Room
- 5 Offices, Nurse Stations
- 3 Storage Rooms
- 2 Lab Areas
- 2 Rest Rooms
- Break Room
- 2 Private Patios, Phone/Data Room

EXHIBIT A
FLOOR PLAN



MEDICAL SPACE AVAILABLE FOR LEASE

Site Pictures

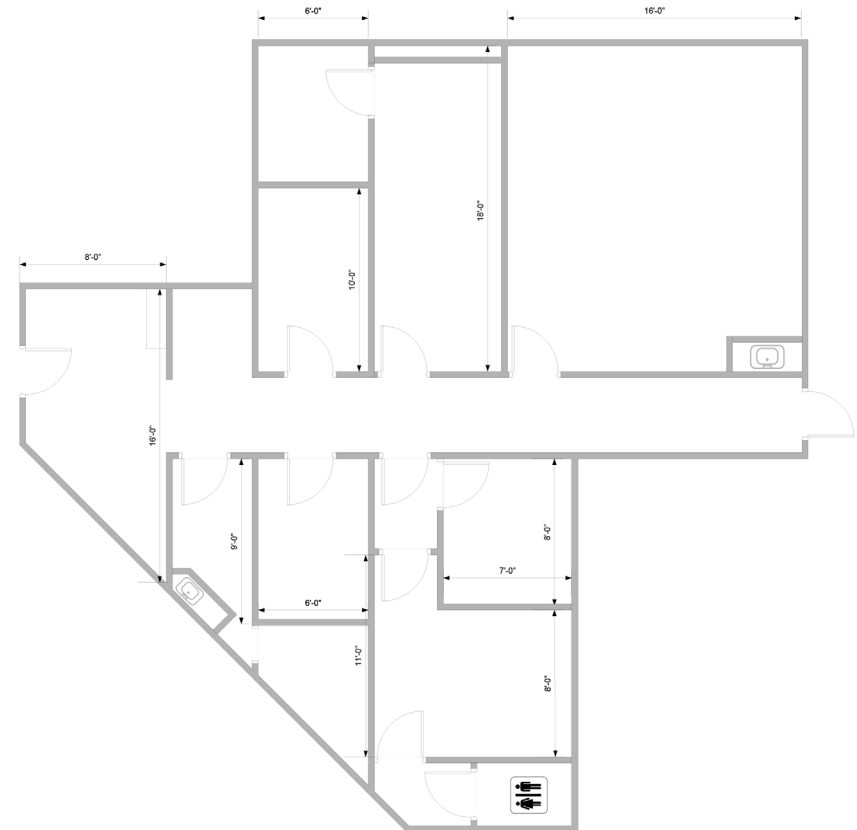


Suite 101

±1,234 SF | \$14.00 NNN + \$5.73 NNN's

Layout includes:

- Reception
- Waiting Room
- 2 Private Offices
- 4 Exam Rooms (2 Plumbed)
- 1 Private Rest Room
- 1 Common Rest Room



MEDICAL SPACE AVAILABLE FOR LEASE

Site Plan



About the Area

