

# KARBANK

REAL ESTATE COMPANY

INDUSTRIAL | OFFICE | COMMERCIAL  
BROKERAGE & DEVELOPMENT  
ESTABLISHED 1950



## 2001 SHAWNEE MISSION PARKWAY | MISSION WOODS, KS UP TO 2,630 SF FOR LEASE

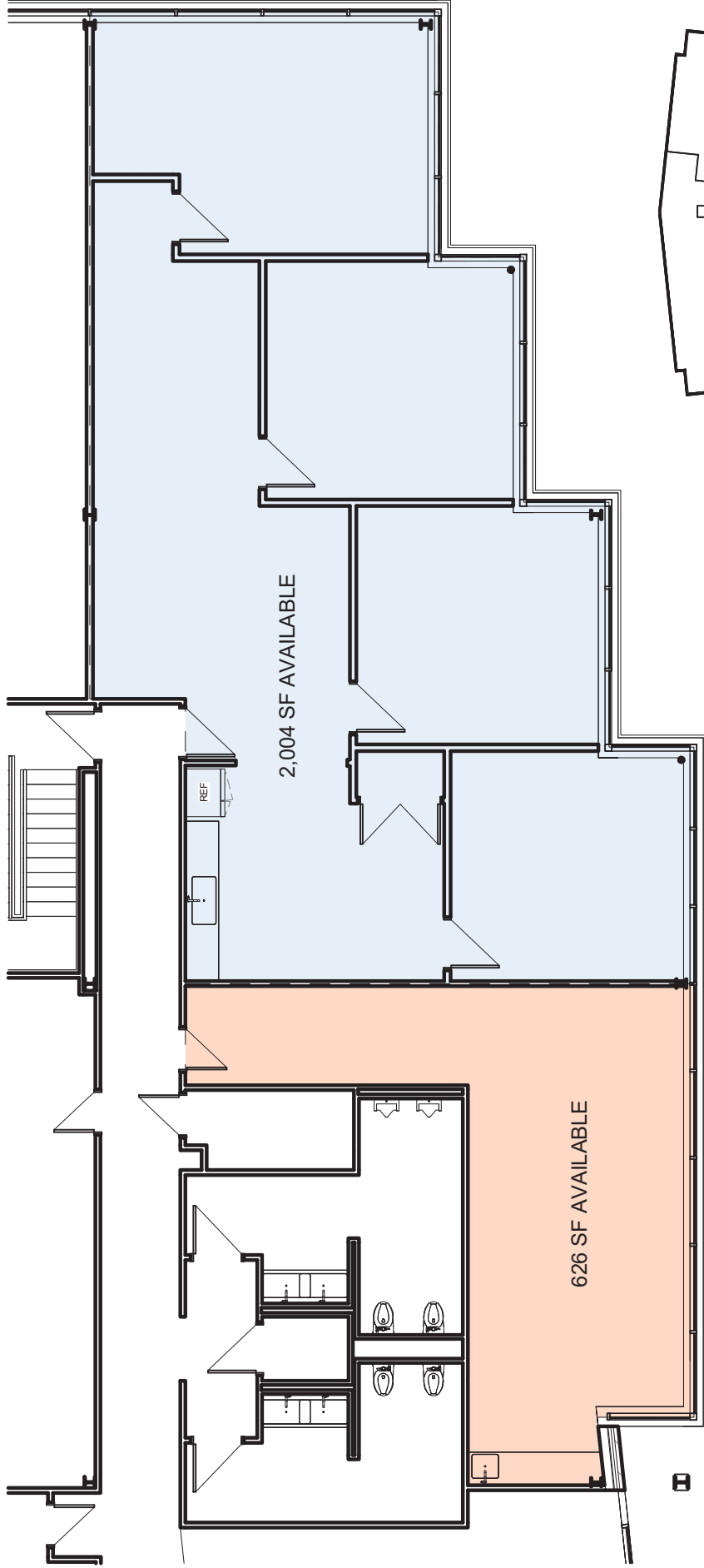
- Offered as two separate spaces - 2,004 SF and 626 SF
- Spaces can be combined to total 3,524 SF
- Prime location on State Line and Shawnee Mission Parkway
- Excellent visibility with 35,000 cars daily
- Parking lot with covered parking
- Available 4-1-2026
- Call for lease rate

THE BARNEY BUILDING  
2000 SHAWNEE MISSION PARKWAY  
SUITE 400  
MISSION WOODS, KS 66205

816.221.4488  
816.221.4494

KARBANK.COM

Information furnished regarding property is from sources deemed reliable but no warranty or representation is made as to the accuracy thereof and same is submitted subject to errors, omissions, prior sale or lease or withdrawal without notice.



OVERALL 2ND FLOOR PLAN

**Perspective**  
ARCHITECTURE + DESIGN

2000 SHAWNEE MISSION PARKWAY, SUITE 100  
MISSION WOODS, KANSAS 66205  
816 502 1500 + WWW.PAD.STUDIO

PROJECT  
**2001 SMP REFRESH**  
2001 SHAWNEE MISSION  
PARKWAY, MISSION WOODS, KS  
66502  
SHEET TITLE  
**2ND FLOOR AVAILABLE SUITES**

PROJECT NUMBER  
**003052.001**  
SHEET AUTHOR  
**PM**  
DATE  
**01/30/2026**

SHEET NUMBER  
**01**