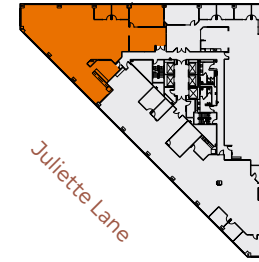
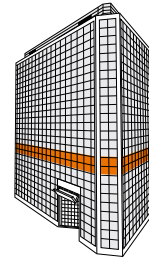


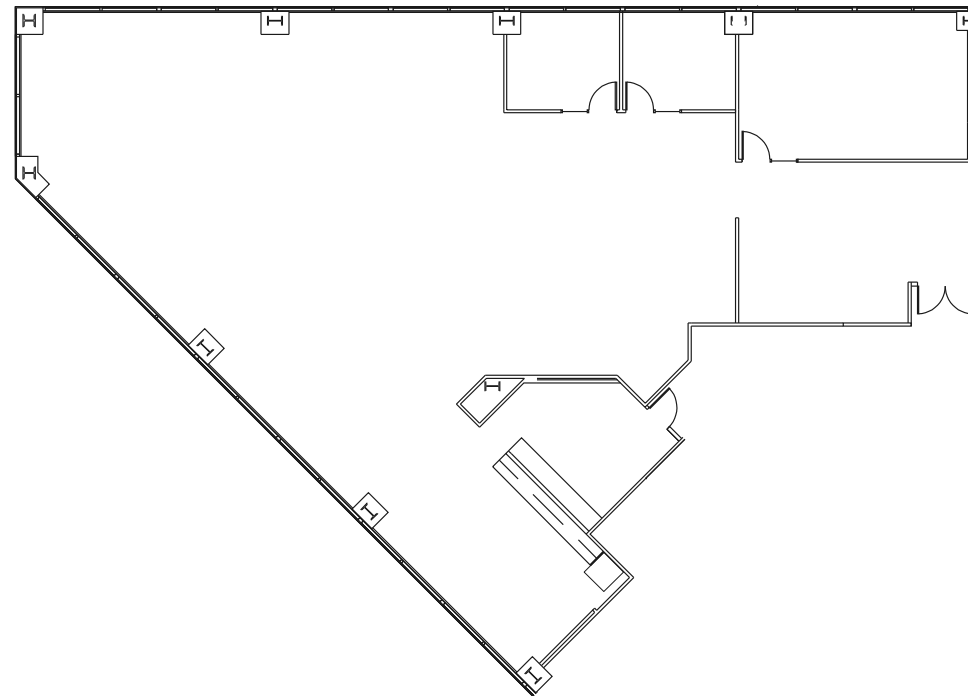
SUITE 525

±5,734 SF | AVAILABLE NOW

- Large Conference Room
- 2 Private Offices
- IT/Storage Area
- Open Break Room With Views
- Open Area For Desks
- Market Ready



MISSION
CITY CENTER



SEAN TOOMEY

+1 408 219 8858
sean.toomey@jll.com
RE Lic#: 01350215

MARYJANE BENGIVENO

+1 408 856 5622
maryjane.bengiveno@jll.com
RE Lic#: 0220114

BRYTE BELLOTTI

+1 408 621 7517
bryte.bellotti@jll.com
RE Lic#: 01944321

