



THE CHRONICLE

FOR SALE

Iconic building in downtown Centralia available for the first time in decades

321 NORTH PEARL, CENTRALIA, WA

22,452 SF

TOTAL BUILDING SF

\$799,550

SALES PRICE

Lewis County continues to experience record breaking residential growth given strong market fundamentals

This is your opportunity to be apart of the future, while property values are still accessible

Portion of the space is currently used for office and portion for flex warehouse

Could be demised to accommodate multiple tenants

First floor 13,042 SF

Second floor 9,400 SF

Second floor is used for combination of office, conference, and storage

Building sits on 16,117 SF/0.37 acres

C3 zoning

Built in 1947

Located across from Centralia City Hall

Many restaurants and shops within walking distance

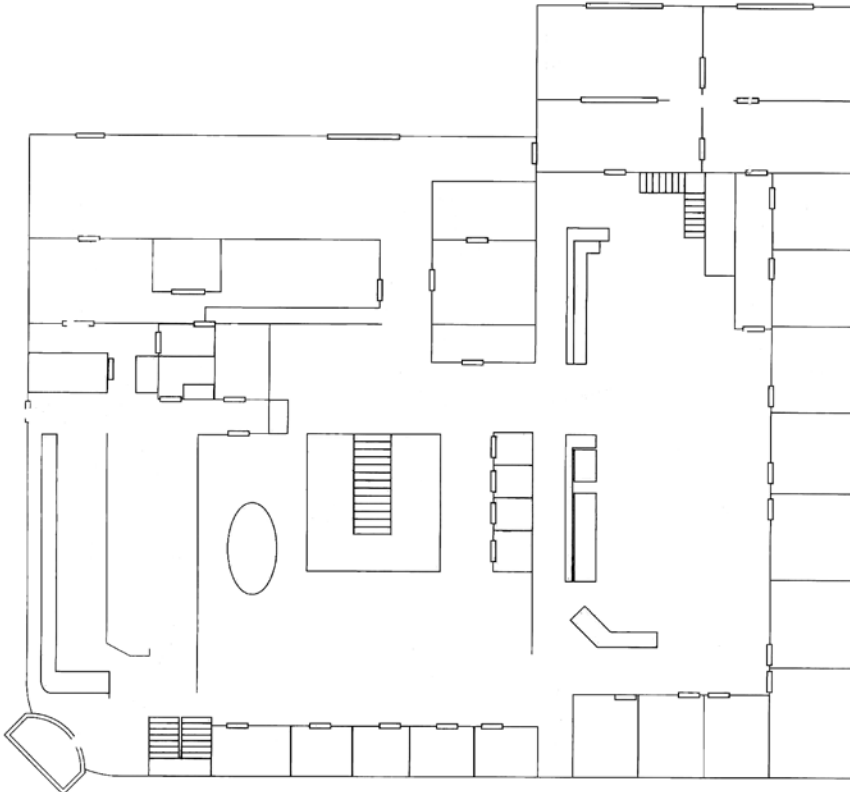


KIDDER.COM

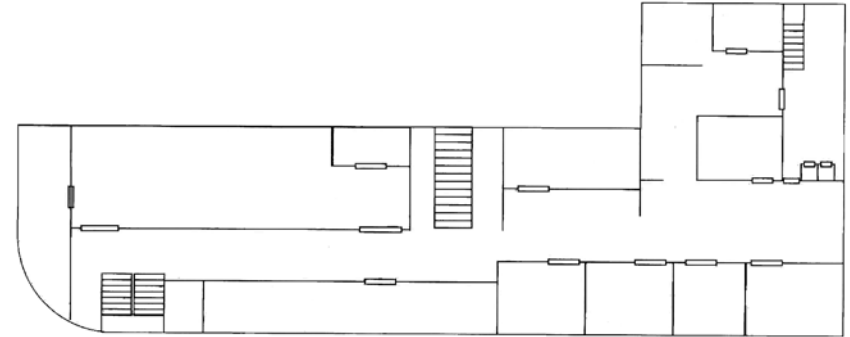
This information supplied herein is from sources we deem reliable. It is provided without any representation, warranty, or guarantee, expressed or implied as to its accuracy. Prospective Buyer or Tenant should conduct an independent investigation and verification of all matters deemed to be material, including, but not limited to, statements of income and expenses. Consult your attorney, accountant, or other professional advisor. All Kidder Mathews designs are the sole property of Kidder Mathews. Branded materials and layouts are not authorized for use by any other firm or person.



FIRST FLOOR



SECOND FLOOR



KIDDER.COM

This information supplied herein is from sources we deem reliable. It is provided without any representation, warranty, or guarantee, expressed or implied as to its accuracy. Prospective Buyer or Tenant should conduct an independent investigation and verification of all matters deemed to be material, including, but not limited to, statements of income and expenses. Consult your attorney, accountant, or other professional advisor. All Kidder Mathews designs are the sole property of Kidder Mathews. Branded materials and layouts are not authorized for use by any other firm or person.



KIDDER.COM

This information supplied herein is from sources we deem reliable. It is provided without any representation, warranty, or guarantee, expressed or implied as to its accuracy. Prospective Buyer or Tenant should conduct an independent investigation and verification of all matters deemed to be material, including, but not limited to, statements of income and expenses. Consult your attorney, accountant, or other professional advisor. All Kidder Mathews designs are the sole property of Kidder Mathews. Branded materials and layouts are not authorized for use by any other firm or person.





KIDDER.COM

This information supplied herein is from sources we deem reliable. It is provided without any representation, warranty, or guarantee, expressed or implied as to its accuracy. Prospective Buyer or Tenant should conduct an independent investigation and verification of all matters deemed to be material, including, but not limited to, statements of income and expenses. Consult your attorney, accountant, or other professional advisor. All Kidder Mathews designs are the sole property of Kidder Mathews. Branded materials and layouts are not authorized for use by any other firm or person.



THE CHRONICLE

The Chronicle

Exclusively leased by

AMY HARDING

Kidder Mathews
360.705.1377

amy.harding@kidder.com

KIP BARKER

CENTURY 21 Lund
360.520.0345

kipbarker@ymail.com

KIDDER.COM

This information supplied herein is from sources we deem reliable. It is provided without any representation, warranty, or guarantee, expressed or implied as to its accuracy. Prospective Buyer or Tenant should conduct an independent investigation and verification of all matters deemed to be material, including, but not limited to, statements of income and expenses. Consult your attorney, accountant, or other professional advisor. All Kidder Mathews designs are the sole property of Kidder Mathews. Branded materials and layouts are not authorized for use by any other firm or person.

km Kidder
Mathews