

THE CAMPUS @VIA VERA CRUZ

334 & 338 VIA VERA CRUZ | SAN MARCOS, CA 92078

**PROFESSIONAL OFFICE & MEDICAL
SUITES FROM 802-3,286 SF
AVAILABLE FOR LEASE**

*6 MONTHS FREE RENT OFFERED FOR ALL NEW LEASES SIGNED WITH A MINIMUM 60 MONTH LEASE TERM. EXCLUDES RENEWALS AND EXPANSIONS OF EXISTING TENANTS.



**NOW OFFERING
SIX (6) MONTHS FREE
RENT FOR ALL NEW
LEASES***

CBRE

PROPERTY HIGHLIGHTS

334 & 338 VIA VERA CRUZ

- ◇ Professional office and medical office suites available for lease in both buildings
- ◇ Feature building entrance w/ beautifully designed common area lobby with high ceilings and natural lighting, intricate tile work, wrought iron railings & wood finishes throughout
- ◇ Elevator served with second floor balconies and operable windows
- ◇ Parking ratio: 5.0/1,000 SF (medical) / 4.0/1,000 SF (office)
- ◇ Building and monument signage available with visibility to Via Vera Cruz (32,416 cars per day on San Marcos Blvd & Via Vera Cruz)
- ◇ Located less than 1/2 mile from the 78 Freeway with immediate access from Via Vera Cruz, Las Posas, or San Marcos Boulevard
- ◇ Close proximity to local hospitals and strategic central north county location, Tri-City Hospital (8.7 miles) and Palomar Medical Center West (5.6 miles), Palomar College (1.4 miles) and Cal State University San Marcos (1.7 miles)

Plentiful Retail Amenities, Restaurants and Services within a 1-Mile Radius

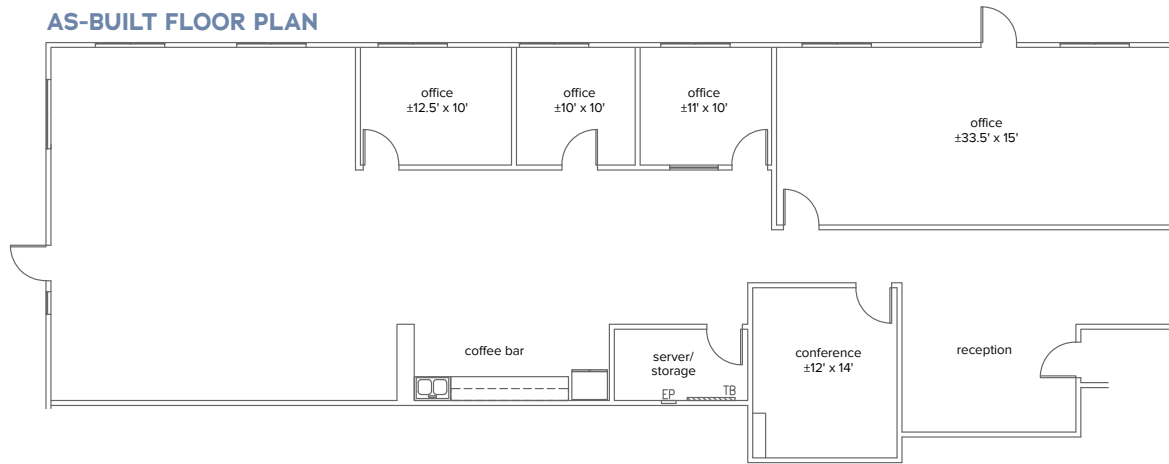


Neaby Restaurants: Mama Kat's Restaurant, Cochina del Charro, Buffalo Wild Wings, TOM's Famous Family Resturant 22, O's American Kitchen, Cold Stone Creamery, In-N-Our Burger, Starbucks, Raising Canes.

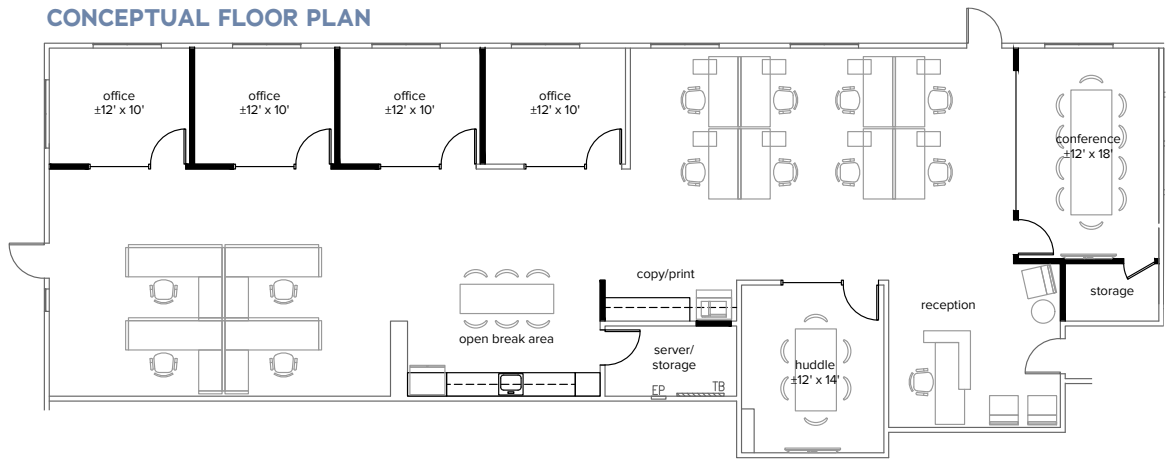


Within walking distance to Grand Plaza Shopping Center (Nordstrom Rack, Starbucks, Bed Bath & Beyond, Party City, Marshalls, Sport Chalet, Ross, Broken Yolk, Petco, Mission Federal Credit Union, Sprouts, Boudin Bakery, AAA, Pei Wei, AT&T, Subway, Sammy's Woodfired Pizza & more)

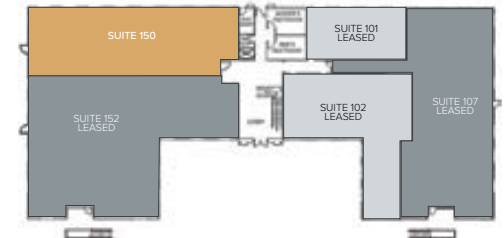
AS-BUILT FLOOR PLAN



CONCEPTUAL FLOOR PLAN



FIRST FLOOR



334 VIA VERA CRUZ

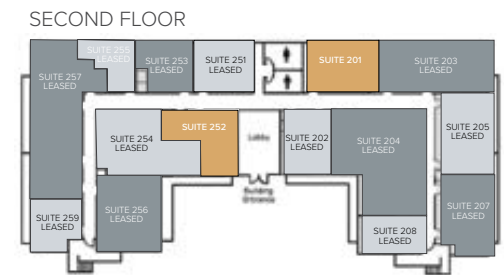
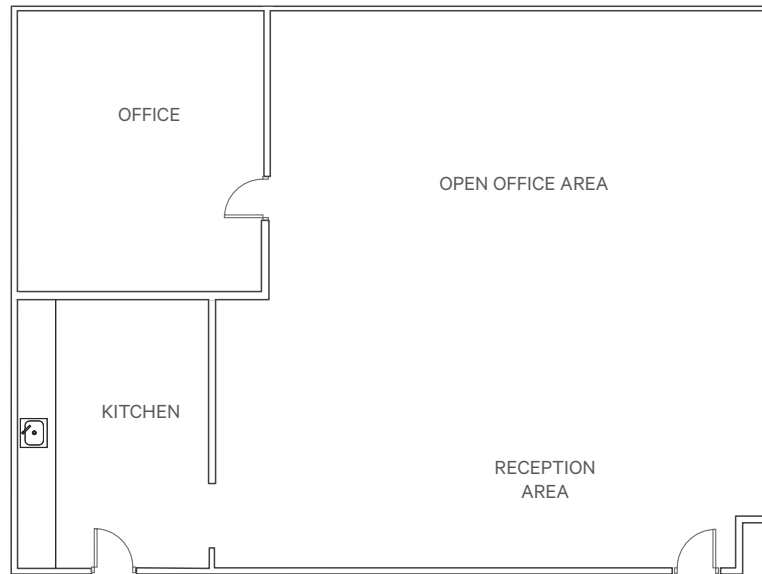
SUITE 150

- ◇ 3,286 RSF | Available Now
- ◇ Reception, 4 Private Offices, Storage, Conference room, Break Area and Open Office Area
- ◇ Office or Medical Space

Office Lease Rate*:
\$2.20/SF + Utilities (TIA Negotiable)

Medical Office Lease Rate*:
\$2.55/SF + Utilities (TIA Negotiable)

*Janitorial included



334 VIA VERA CRUZ

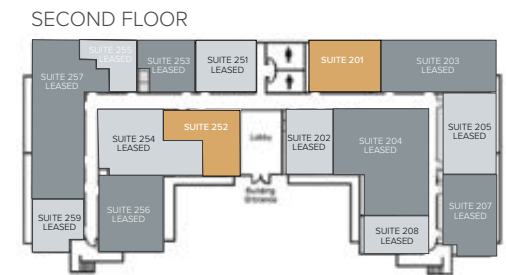
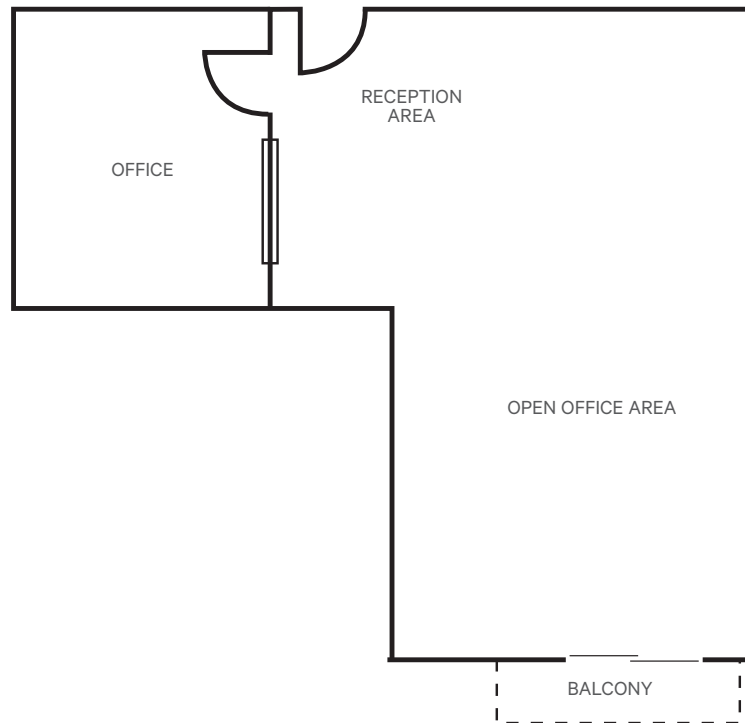
SUITE 201

- ◇ 879 RSF | Available Now
- ◇ Reception area, one private office, kitchen and open office area
- ◇ Office or Medical Space

Office Lease Rate*:
\$2.20/SF + Utilities (TIA Negotiable)

Medical Office Lease Rate*:
\$2.55/SF + Utilities (TIA Negotiable)

*Janitorial included



334 VIA VERA CRUZ

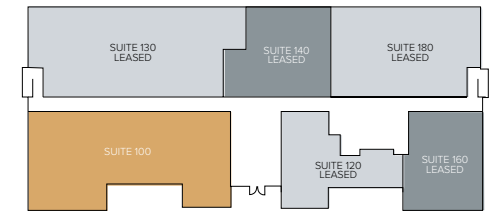
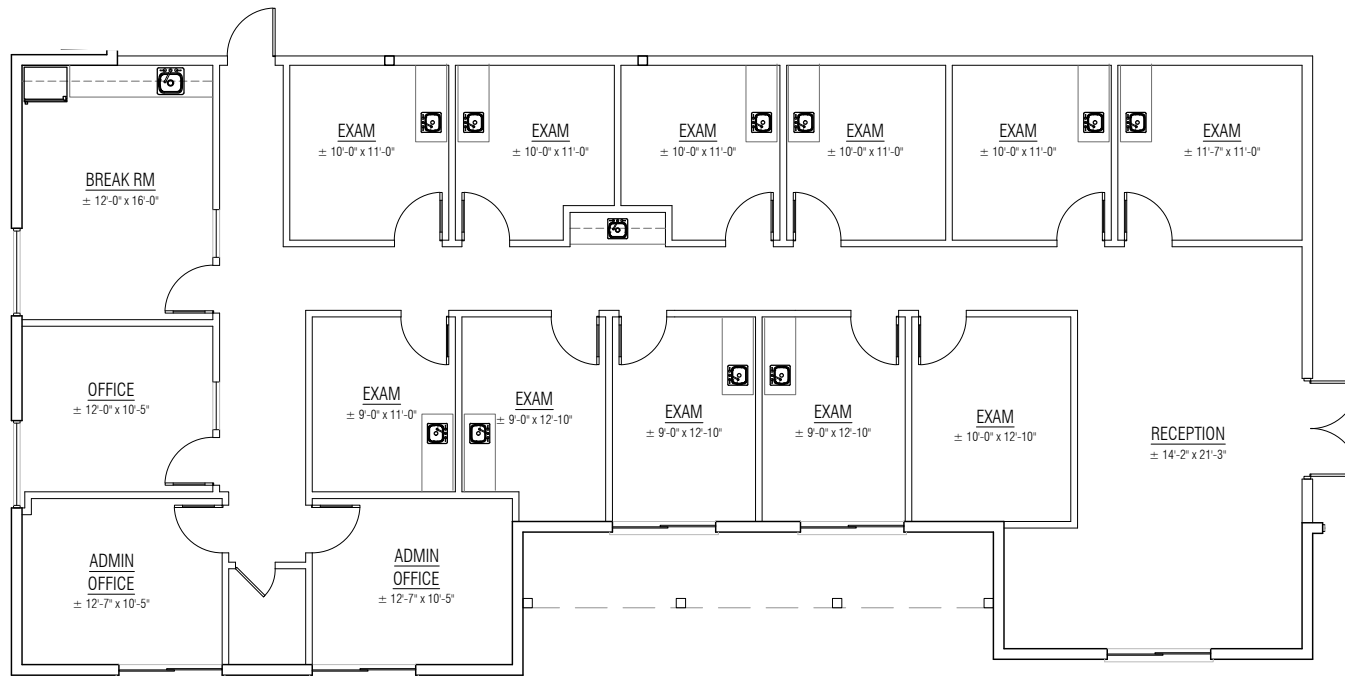
SUITE 252

- ◇ 802 RSF | Spec Suite | Available 7/1/26
- ◇ Reception, 1 Private Office and Open Office Area
- ◇ Office or Medical Space

Office Lease Rate*:
\$2.20/SF + Utilities (TIA Negotiable)

Medical Office Lease Rate*:
\$2.55/SF + Utilities (TIA Negotiable)

*Janitorial included



FIRST FLOOR

338 VIA VERA CRUZ

SUITE 100

- ◇ 3,079 RSF | Available Now
- ◇ Reception area, 14 offices/exam rooms and break room
- ◇ Office or Medical Space

** Floor plan subject to change

Office Lease Rate*:
\$2.20/SF + Utilities (TIA Negotiable)

Medical Office Lease Rate*:
\$2.55/SF + Utilities (TIA Negotiable)

*Janitorial included

THE CAMPUS @VIA VERA CRUZ

334 & 338 VIA VERA CRUZ | SAN MARCOS, CA 92078



**FOR MORE INFORMATION,
PLEASE CONTACT:**

BOB COWAN

+1 760 438 8510

bob.cowan@cbre.com

LIC #01838109

CBRE

© 2026 CBRE, Inc. All rights reserved. This information has been obtained from sources believed reliable but has not been verified for accuracy or completeness. CBRE, Inc. makes no guarantee, representation or warranty and accepts no responsibility or liability as to the accuracy, completeness, or reliability of the information contained herein. You should conduct a careful, independent investigation of the property and verify all information. Any reliance on this information is solely at your own risk.