

101 Chestnut St #2, Gaithersburg, MD 20877



Offering Summary

Price	\$680,000
Unit Size	2678 sqft
Year Built	1980
Property Tax	\$7,398.54/year
Condo Fee	\$480/month
Zoning	RB, City of Gaithersburg
Parking	39 surface spaces

Demographics

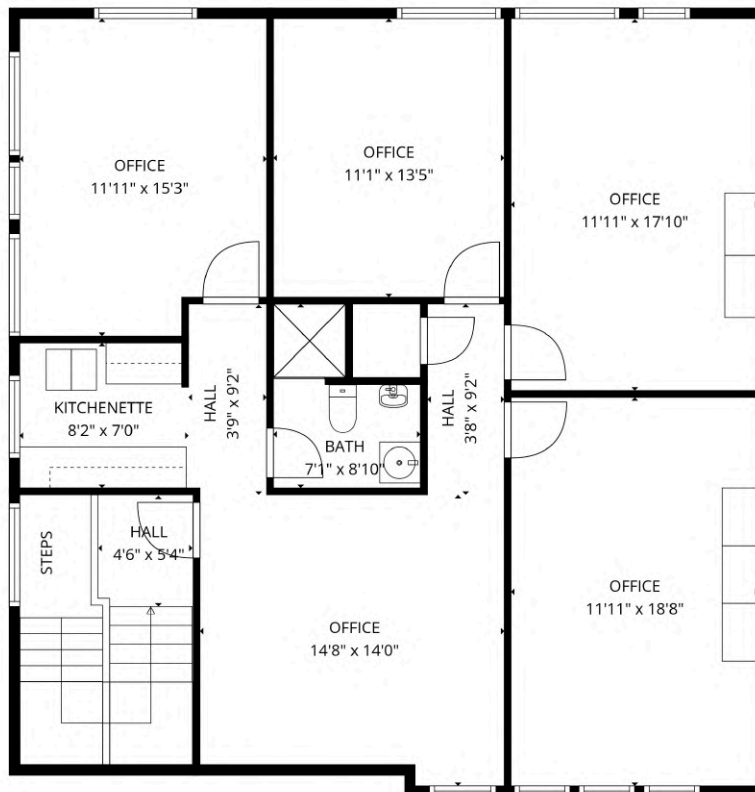
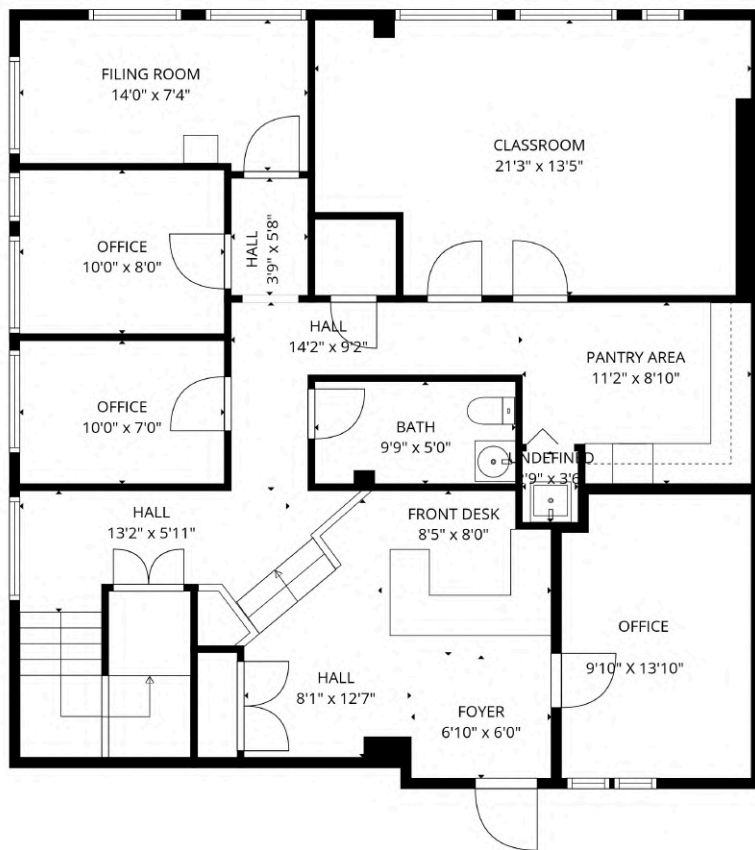
	1 mile	2 miles	5 miles
Households	8,344	30,776	110,057
Population	22,010	80,803	293,494
Avg. HH Income	\$77,082	\$97,643	\$125,510

Property Description

This well-maintained, two-level commercial townhouse condo offers a wonderful opportunity for an owner user or investor. Currently home to an active counseling and therapeutic practice, the floor plan adapts readily to a broad range of professional services. The layout functions well as-is for a multi-practitioner practice and is ready for immediate occupancy. Spread across two floors, the unit includes nine enclosed, windowed rooms, with one classroom and a dedicated reception area, two kitchen areas with one on each floor, and a bathroom on each level. An ample surface parking serves both staff and clients with ease.

Location Summary

Accessibility is a primary driver for this location, with the site positioned just west of N Frederick Ave (MD-355) and offering rapid connectivity to I-270 and the ICC (MD-200). The property is surrounded by a dense concentration of both national and regional traffic generators. Gaithersburg transit station is located less than one mile to the east, providing critical commuter rail and bus link functionality.



TOTAL: 2436 sq. ft
 1st floor: 1160 sq. ft, 2nd floor: 1276 sq. ft
 EXCLUDED AREAS: STEPS: 21 sq. ft, WALLS: 131 sq. ft

FLOOR PLAN CREATED BY CUBICASA APP. MEASUREMENTS DEEMED HIGHLY RELIABLE BUT NOT GUARANTEED.





Imagery ©2026 Airbus, Maxar Technologies, Map data ©2026 Google 1000 ft

