

FOR SALE

Pineview/Dr

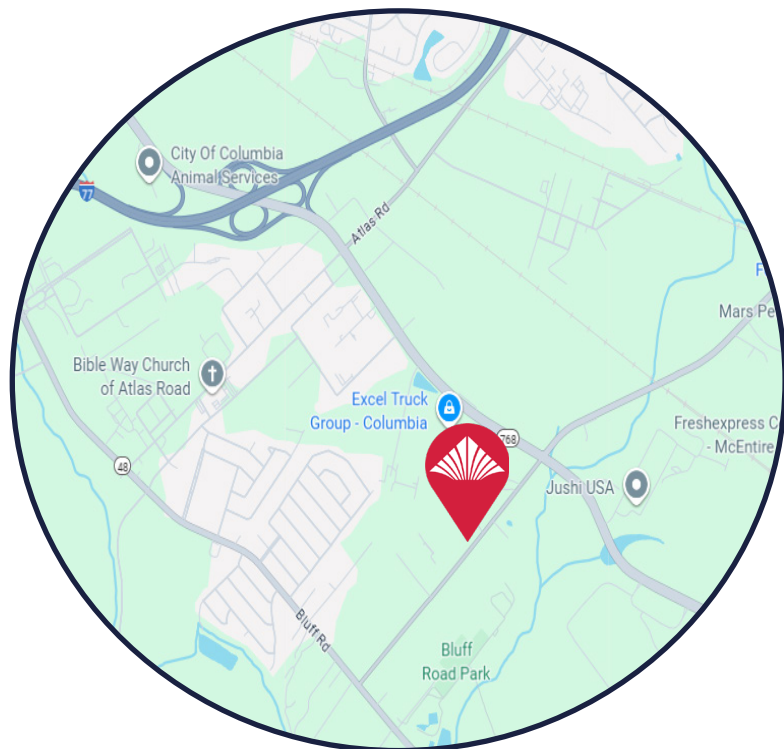


100 Metal Park Drive

Columbia, SC 29209

±3.42 Acres for Sale

- Traffic Count on Shop Rd: ~25,700 VPD
- At the Corner of Pineview Dr.
- Zoning: M-1 Industrial & Commercial
- 12" Water Line & 8" Sewer Line
- TMS #: R16200-04-10



Sales Price: \$513,000

CONTACT:

George McCutchen, CCIM, SIOR | gmcutchen@wilsonkibler.com | 803.255.8603

James Rogers SIOR | james.rogers@wilsonkibler.com | 803.255.8621

Wilson Kibler
COMMERCIAL REAL ESTATE

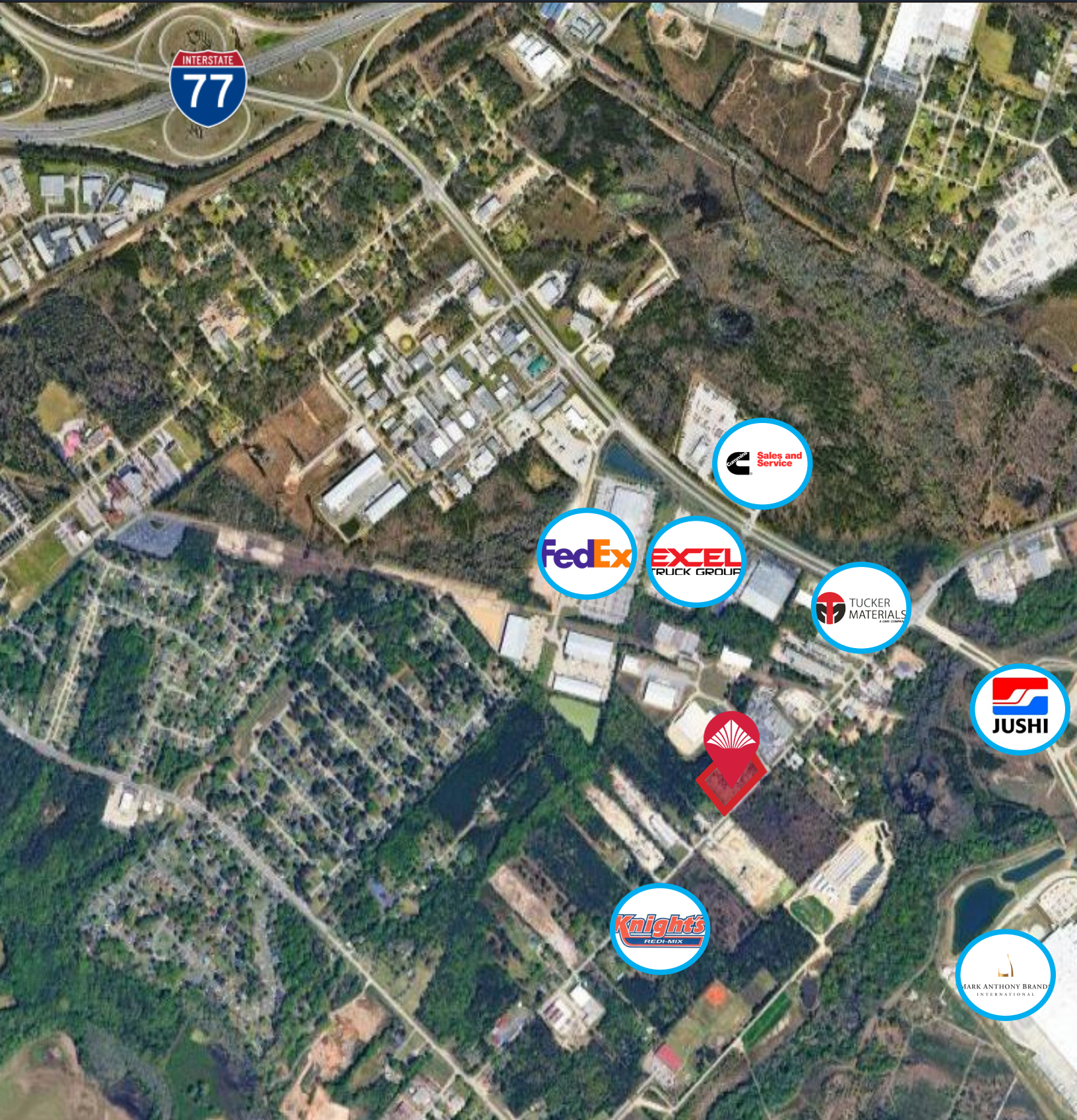


The information contained herein has been obtained from sources we believe to be reliable; however, Wilson Kibler has not conducted any investigation regarding these matters and makes no warranty or representation whatsoever regarding the accuracy or completeness of the information provided.



100 Metal Park Drive

Columbia, SC 29209



CONTACT:

George McCutchen, CCIM, SIOR | gmcutchen@wilsonkibler.com | 803.255.8603

James Rogers SIOR | james.rogers@wilsonkibler.com | 803.255.8621

The information contained herein has been obtained from sources we believe to be reliable; however, Wilson Kibler has not conducted any investigation regarding these matters and makes no warranty or representation whatsoever regarding the accuracy or completeness of the information provided.

Wilson Kibler
COMMERCIAL REAL ESTATE





100 Metal Park Drive

Columbia, SC 29209



- 1. Atlas Ct Industrial Park
- 2. Jushi USA
- 3. Thermal Engineering Corp.
- 4. American Spiralweld
- 5. Columbia Industrial Park
- 6. Insurance Auto Auctions
- 7. Fed-Ex
- 8. McEntire Produce
- 9. Mars Petcare
- 10. Sysco Columbia
- 11. Rinker Materials
- 12. Southern Wine and Spirits

CONTACT:

George McCutchen, CCIM, SIOR | gmcutchen@wilsonkibler.com | 803.255.8603

James Rogers SIOR | james.rogers@wilsonkibler.com | 803.255.8621

The information contained herein has been obtained from sources we believe to be reliable; however, Wilson Kibler has not conducted any investigation regarding these matters and makes no warranty or representation whatsoever regarding the accuracy or completeness of the information provided.

Wilson Kibler
COMMERCIAL REAL ESTATE

