

# FOR LEASE – OFFICE/RETAIL SPACE

1616 E. Wooster St, Ste. 20, Bowling Green, OH 43402

2,418 Square Feet, \$1,799 /MO.



Conveniently located just off I-75, the Greenwood Centre offers excellent accessibility and visibility along one of Bowling Green's primary commercial corridors. Positioned near Bowling Green State University, Historic Downtown Bowling Green, hotels, local businesses, and major athletic venues, this property provides a highly accessible location for a variety of retail, office, or service-oriented users.

## Property Highlights

- Prime Location Along E. Wooster Street
- High Traffic Counts
- Surrounded by Hotels and Local Businesses
- Excellent Visibility and Accessibility
- Ideal for Retail, Office, or Service Uses

## For More Information



Steve Green, Broker  
419.360.7990  
sgreen@meccabg.com



Mark Remeis, Broker  
419.353.5800  
mremeis@aagreen.com

# FOR LEASE – OFFICE/RETAIL SPACE

1616 E. Wooster St, Ste. 20, Bowling Green, OH 43402

2,418  
Square Feet  
Available

## Offer Summary

**Lease Rate:** \$8.93/SF = \$1,799/MO

**Service Type:** NNN

**Available Space:** 2,418 SF

## General & Building Information

**Number of Stories:** One (In-Line), Two (Courtyard)

**Year Constructed:** 1970 (Remodeled in 1989 & 2010)

**Condition:** Very Good

**Acreage:** 2.84

**County:** Wood

**Zoning:** B-2 General Commercial

**Parking Spaces:** 377 + Common Spaces

**Exterior Walls:** Brick

**Structural System:** Block with Steel Frame

**Roof:** Flat and Standing Seam

**Floors:** Concrete

**Basement:** N/A

**Restrooms:** One

**Ceiling Height:** 12 Ft.

**Heat:** Forced Air

**Air Conditioning:** Yes

**Elevator:** Yes (The Courtyard)

**Exterior Signage:** Yes

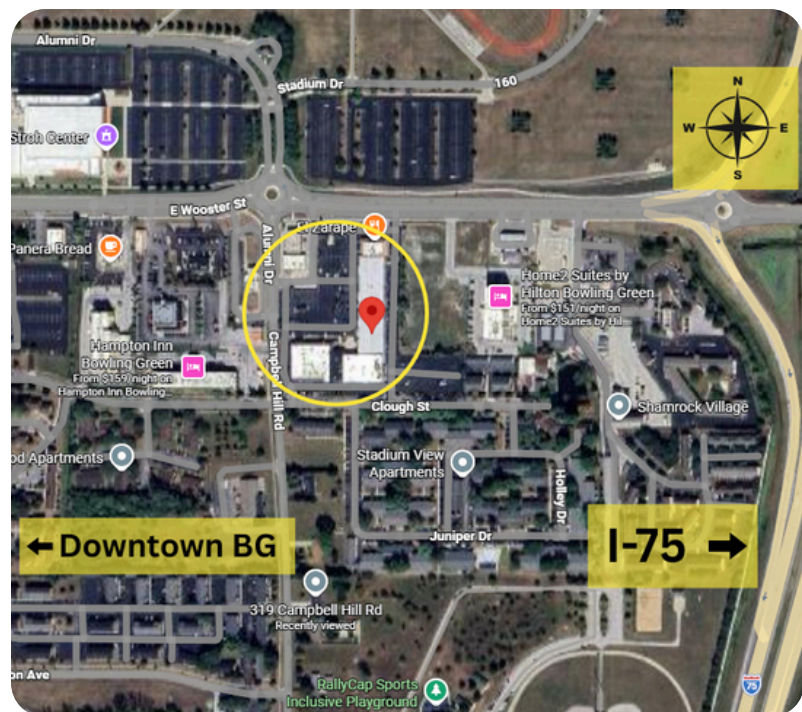


## Unit Information

**Current Occupant:** Vacant

**Occupancy Date:** Available Now

**Sign on Property:** Yes



# FOR LEASE - OFFICE/RETAIL SPACE

1616 E. Wooster St, Ste. 20, Bowling Green, OH 43402

2,418  
Square Feet  
Available

