

For Lease

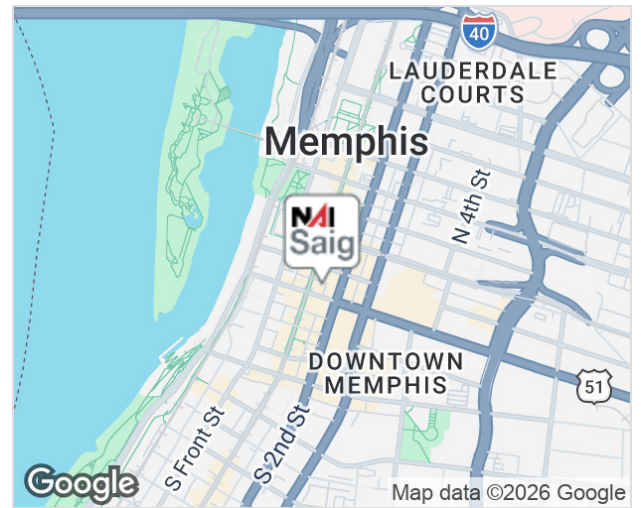
Retail

3,000 SF +/-



24 S Main St

Memphis, Tennessee 38103



Property Features

- Prime Downtown Memphis location at 24 South Main Street
- Historic former home of the iconic The Peanut Shoppe
- Redeveloped mixed-use property with residential apartments on the 2nd and 3rd floors
- Approximately 3,000 SF of street-level retail space available
- Additional 3,000 SF basement space also available
- Basement previously operated as a thrift store and offers flexible storage, lounge, prep, retail, or entertainment potential
- Ideal opportunity for a restaurant, bar, café, cocktail lounge, or experiential retail concept.
- Walkable location with strong pedestrian activity and nearby parking options
- Rare opportunity to lease a landmark Downtown Memphis retail location with built-in residential synergy

For more information:

James McCraw, CCIM

901 590 9997 • jmccraw@saigcompany.com

Jeff Higdon, SIOR

901 526 3100 • jhigdon@saigcompany.com

NO WARRANTY OR REPRESENTATION, EXPRESS OR IMPLIED, IS MADE AS TO THE ACCURACY OF THE INFORMATION CONTAINED HEREIN, AND THE SAME IS SUBMITTED SUBJECT TO ERRORS, OMISSIONS, CHANGE OF PRICE, RENTAL OR OTHER CONDITIONS, PRIOR SALE, LEASE OR FINANCING, OR WITHDRAWAL WITHOUT NOTICE, AND OF ANY SPECIAL LISTING CONDITIONS IMPOSED BY OUR PRINCIPALS NO WARRANTIES OR REPRESENTATIONS ARE MADE AS TO THE CONDITION OF THE PROPERTY OR ANY HAZARDS CONTAINED THEREIN ARE ANY TO BE IMPLIED.

NAI Saig Company

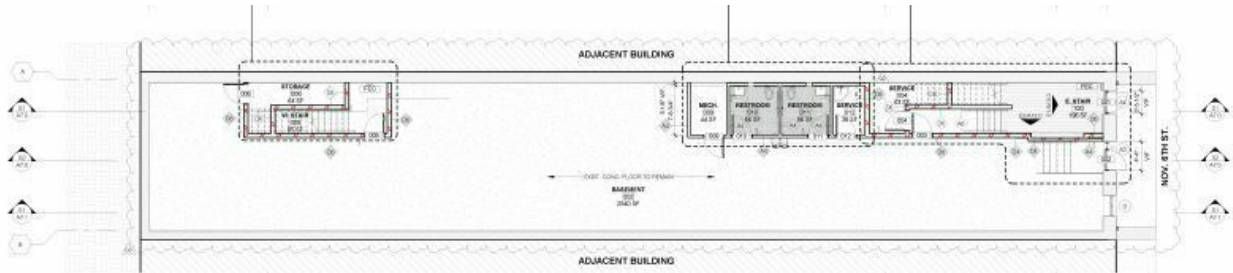
6263 Poplar Avenue Suite 150, Memphis, TN 38119

901 526 3100

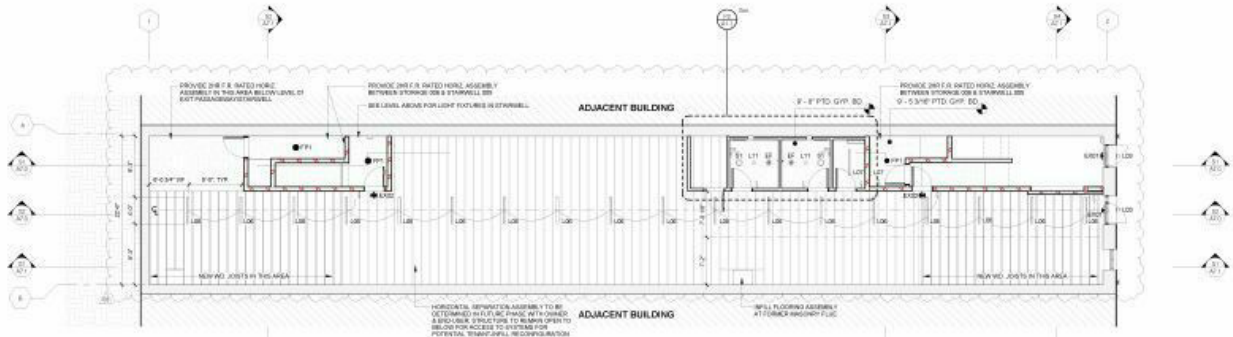
saigcompany.com

For Lease

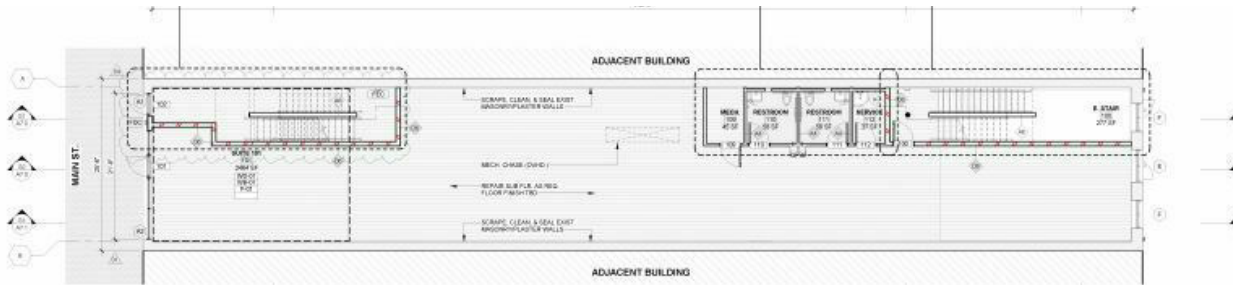
Retail



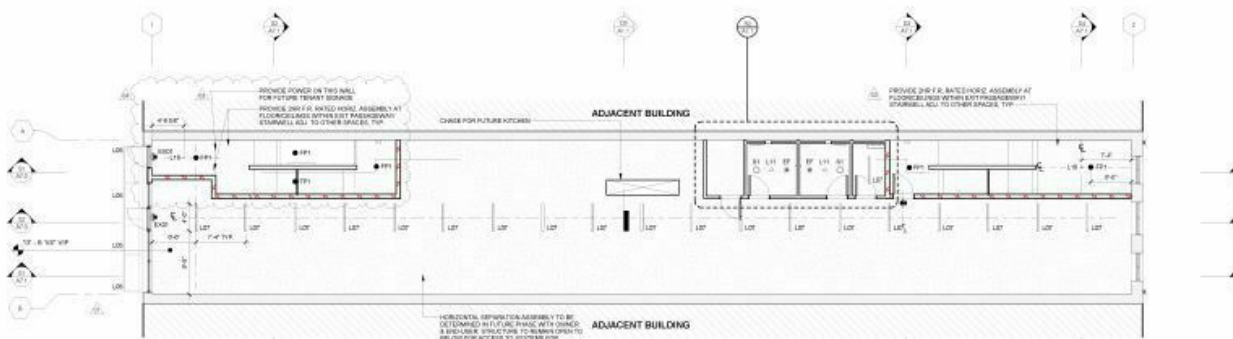
P0 Basement Plan
1/8" = 1'-0"



R0 Basement RCP
1/8" = 1'-0"



P1 Level 01 Plan
1/8" = 1'-0"



R1 Level 01 RCP
1/8" = 1'-0"

For Lease

Retail

