

FOR LEASE

±1,972 SF INDUSTRIAL WAREHOUSE

20820-20830 N. 25TH PLACE | SUITE 112 | PHOENIX, AZ



FOR MORE INFORMATION, CONTACT:

TREVOR MCKENDRY
Executive Vice President
P: 602.575.2332
tmckendry@daumcre.com

CHRIS ROGERS
Executive Vice President
P: 602.575.2309
crogers@daumcre.com

BEAU CITRON, JD
Associate
P: 602.575.2319
bcitron@daumcre.com

**DAUM**
COMMERCIAL REAL ESTATE SERVICES

FOR LEASE

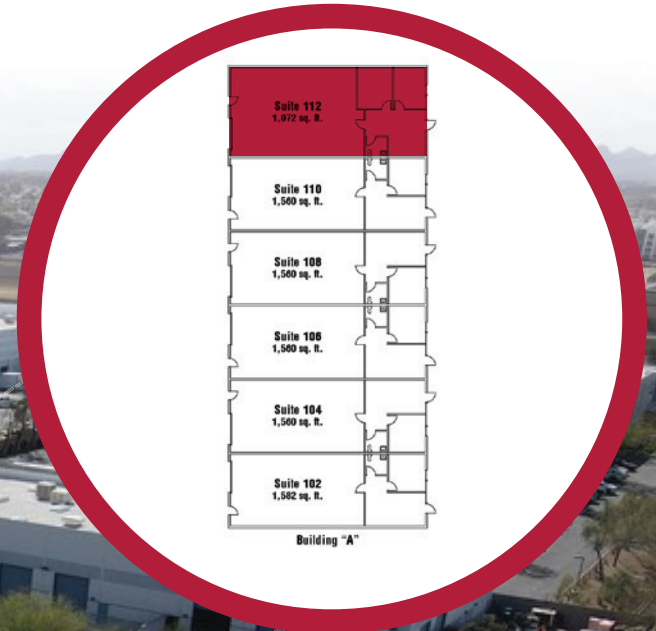
±1,972 SF INDUSTRIAL WAREHOUSE

20820-20830 N. 25TH PL. | SUITE 112 | PHOENIX | AZ

PROPERTY HIGHLIGHTS

PROPERTY OVERVIEW

Addresses	20820-20830 N. 25th Place, Suite 112, Phoenix
Product Type	Office/Warehouse
Lot Size	±1.54 AC
Zoning	Ind Prk
Clear Height	Approx. 17'
Doors	Four 12' x 14' Grade Level Roll Up Door
Office	Reception, Two private offices, and AC warehouse
Warehouse	A/C



FOR LEASE
±1,972 SF INDUSTRIAL WAREHOUSE
20820-20830 N. 25TH PL. | SUITE 112 | PHOENIX | AZ

PHOTOS



3

Although all information is furnished regarding for sale, rental or financing from sources deemed reliable, such information has not been verified and no express representation is made nor is any to be implied as to the accuracy thereof, and it is submitted subject to errors, omissions, changes of price, rental or other conditions, prior sale, lease or financing, or withdrawal without notice. D/AQ Corp. # 01129558

DAUM
COMMERCIAL REAL ESTATE SERVICES

FOR LEASE
±1,972 SF INDUSTRIAL WAREHOUSE
20820-20830 N. 25TH PL. | SUITE 112 | PHOENIX | AZ

AERIALS



4

Although all information is furnished regarding for sale, rental or financing from sources deemed reliable, such information has not been verified and no express representation is made nor is any to be implied as to the accuracy thereof, and it is submitted subject to errors, omissions, changes of price, rental or other conditions, prior sale, lease or financing, or withdrawal without notice. D/AQ Corp. # 01129558

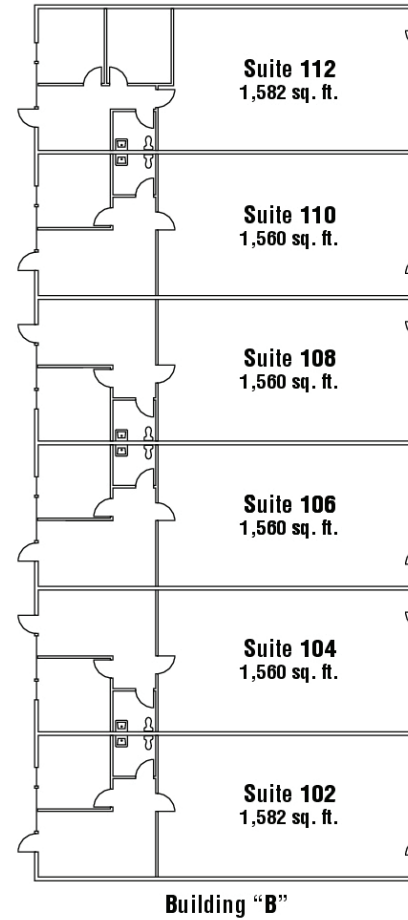
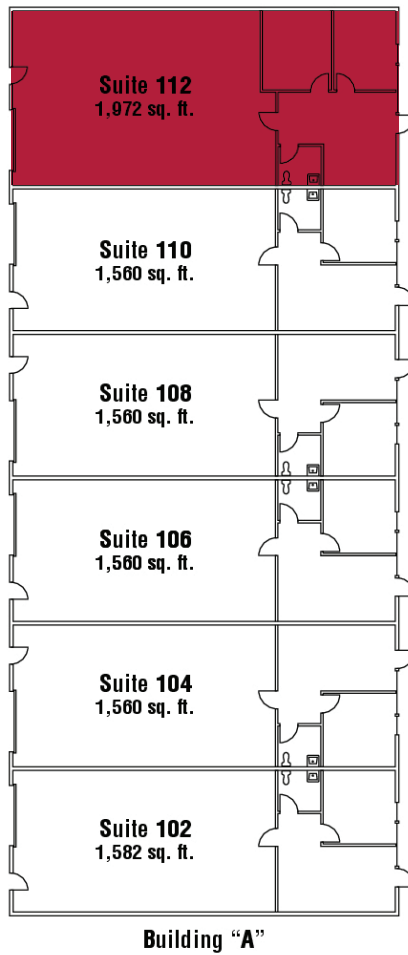
DAUM
COMMERCIAL REAL ESTATE SERVICES

FOR LEASE
±1,972 SF INDUSTRIAL WAREHOUSE
20820-20830 N. 25TH PL. | SUITE 112 | PHOENIX | AZ

FLOOR PLAN

20830 N 25th Pl, Phoenix AZ

20820 N 25th Pl, Phoenix AZ



***NOT TO SCALE**

FOR LEASE
±1,972 SF INDUSTRIAL WAREHOUSE
20820-20830 N. 25TH PL. | SUITE 112 | PHOENIX | AZ

AMENITIES MAP



FOR LEASE
±1,972 SF INDUSTRIAL WAREHOUSE
20820-20830 N. 25TH PL. | SUITE 112 | PHOENIX | AZ

AMENITIES MAP



7

Although all information is furnished regarding for sale, rental or financing from sources deemed reliable, such information has not been verified and no express representation is made nor is any to be implied as to the accuracy thereof, and it is submitted subject to errors, omissions, changes of price, rental or other conditions, prior sale, lease or financing, or withdrawal without notice. D/AQ Corp. # 01129558

DAUM
COMMERCIAL REAL ESTATE SERVICES

FOR LEASE

±1,972 SF INDUSTRIAL WAREHOUSE

20820-20830 N. 25TH PLACE | SUITE 112 | PHOENIX, AZ

FOR MORE INFORMATION, CONTACT:

TREVOR MCKENDRY
Executive Vice President
P: 602.575.2332
tmckendry@daumcre.com

CHRIS ROGERS
Executive Vice President
P: 602.575.2309
crogers@daumcre.com

BEAU CITRON, JD
Associate
P: 602.575.2319
bcitron@daumcre.com

Although all information is furnished regarding for sale, rental or financing from sources deemed reliable, such information has not been verified and no express representation is made nor is any to be implied as to the accuracy thereof, and it is submitted subject to errors, omissions, changes of price, rental or other conditions, prior sale, lease or financing, or withdrawal without notice. D/AQ Corp. # 01129558