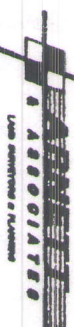
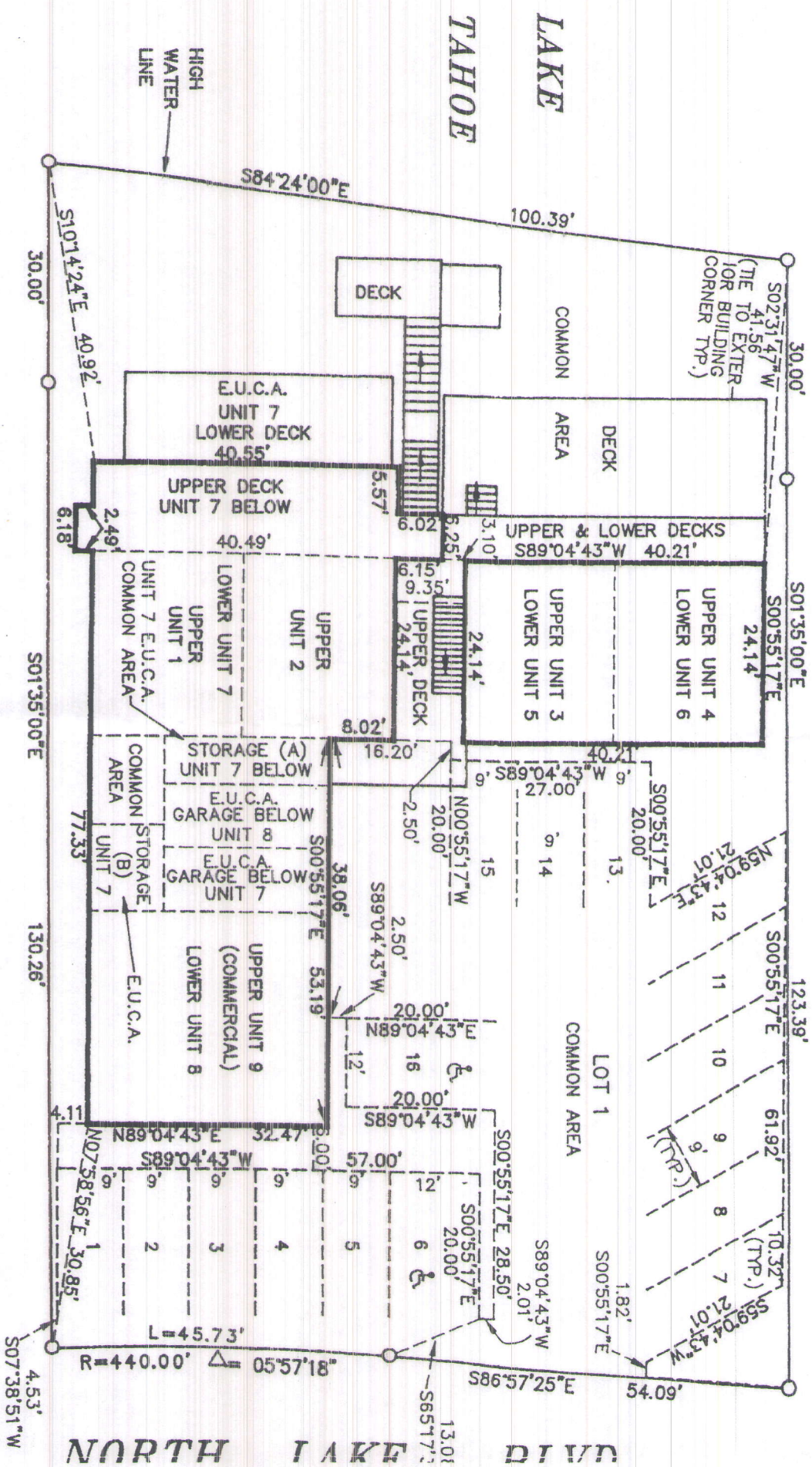


NOTE: "E.U.C.A." DENOTES EXCLUSIVE USE COMMON AREA.

EXHIBIT "A"
 CONDOMINIUM PLAN FOR
HOLIDAY SHORES COMMERCIAL CONDOMINIUM
 UNIT NO. 1
 A NINE UNIT COMMERCIAL CONDOMINIUM PROJECT
 BEING LOT 1, TRACT MAP NO. 563, BOOK "0" OF MAPS, PAGE 1,
 SITUATE WITHIN A PORTION OF SEC. 13, T.16N., R.17E., M.D.B. & M.
 PLACER COUNTY,
 CALIFORNIA



SHEET 3 OF 8 SHEETS



NORTH LAKE DIVD

POR. NW 1/4, SEC. 13, T.16N., R.17E., M.D.B. 8 M.

(TAGATO AVE)

AGATAHOE BLVD

X705 PINO GRANDE AVE

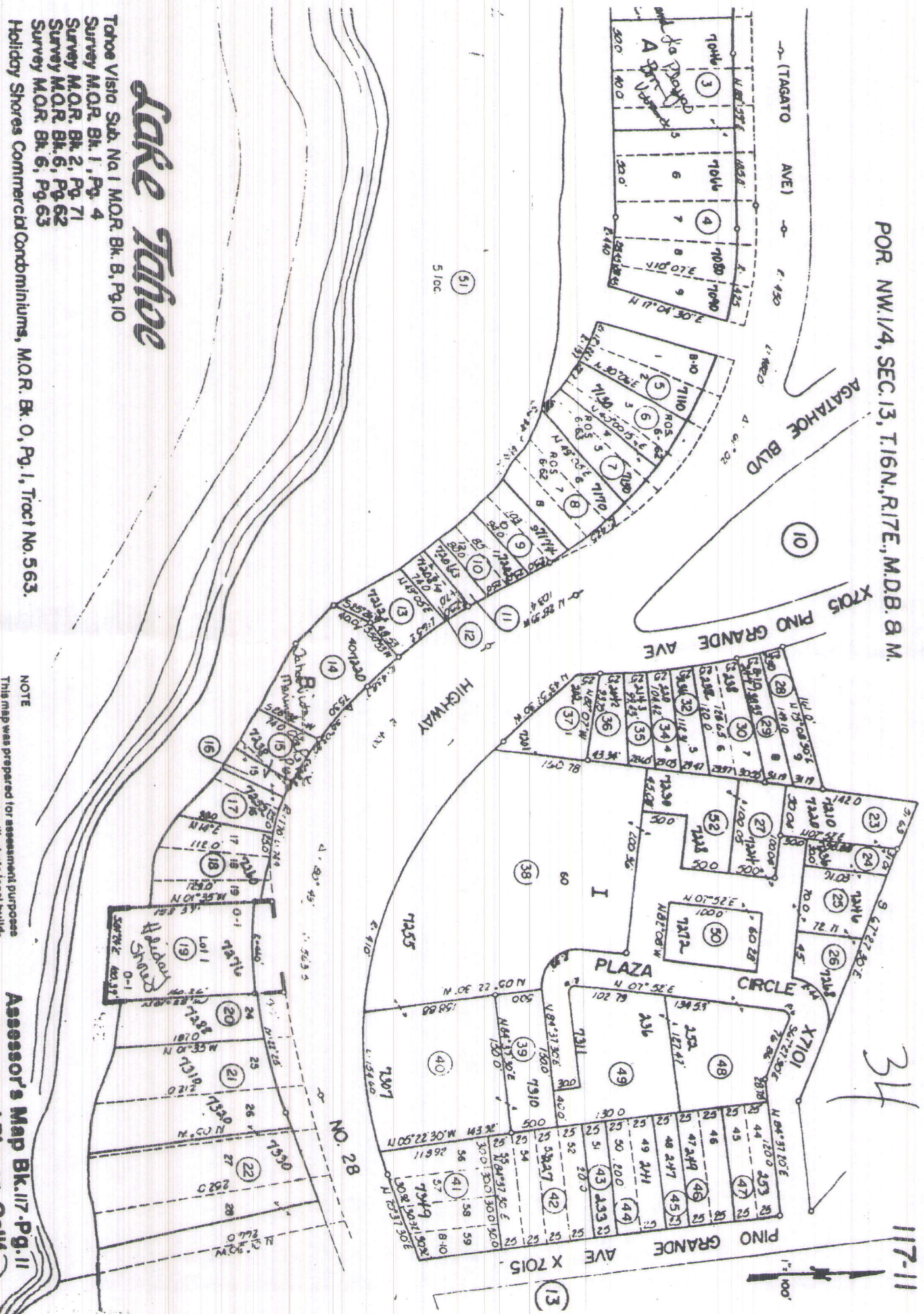
HIGHWAY

PLAZA CIRCLE

X7101

PINO GRANDE AVE X7015

NO. 28



Lake Tahoe

Tahoe Vista Sub. No. 1 M.O.R. Bk. B, Pg. 10
 Survey M.O.R. Bk. 1, Pg. 4
 Survey M.O.R. Bk. 2, Pg. 71
 Survey M.O.R. Bk. 6, Pg. 62
 Survey M.O.R. Bk. 6, Pg. 63
 Holiday Shores Commercial Condominiums, M.O.R. Bk. O, Pg. 1, Tract No. 563.

NOTE

This map was prepared for assessment purposes only, and is not intended to illustrate legal building sites or supercede local ordinances. Official information concerning size or use of any parcel should be obtained from recorded documents and local governing agencies.

Assessor's Map Bk. 117-Pg. 11

County of Placer, Calif.

NOTE

Assessor's Block Numbers Shown in Ellipse
 Assessor's Parcel Numbers Shown in Circles